

3 way Power Divider SMA Connectors from 1 MHz to 300 MHz Rated at 10 Watts

Fairview Microwave carries a wide selection of power dividers to fit your needs. These components are essential in many systems, allowing the combination of multiple signals or splitting of a single signal into multiple signals with equal magnitude and phase. Fairview Microwave's resistive and Wilkinson power dividers come with excellent performance featuring minimal loss, high isolation and low VSWR. They are available in both narrow and broad bandwidths with a variety of connector types such as 2.92mm, BNC, N and SMA.

The FMDV1208 is a 3-way power divider that operates from 1 to 300 MHz and can handle up to 10 Watts (CW) with 1.2 dB max insertion loss and 20 dB min isolation. The package interface uses SMA female connectors.

Electrical Specifications

Number of Output Ports			3	
Description	Min	Typ	Max	Units
Frequency Range	1		300	MHz
Impedance		50		Ohms
Input VSWR		1.25:1	1.35:1	
Output VSWR		1.35:1	1.4:1	
Insertion Loss		1	1.2	dB
Isolation	20			dB
Amplitude Balance			0.3	dB
Phase Balance			5	Degrees
Nominal Power Splitting		4.8		dB
Input Power (CW)			10	Watts
Reverse Power (CW)			0.5	Watts
Input Power (Peak)			100	Watts

Mechanical Specifications

Size	
Length	3.159 in [80.24 mm]
Width	1.56 in [39.62 mm]
Height	0.585 in [14.86 mm]
Weight	0.64 lbs [290.3 g]
Housing Material and Plating	Aluminum
Configuration	
Input Connector	SMA Female
Output Connectors	SMA Female

Environmental Specifications

Temperature	
Operating Range	-40 to +85 deg C
Storage Range	-50 to +105 deg C
Humidity	100% RH at 35°C, 95%RH at 40°C



Features:

- 3-Way Power Divider
- SMA Female Connectorized Design
- 1 to 300 MHz Frequency Range
- Max Power 10 Watts (CW)
- Insertion Loss < 1.2 dB
- Isolation > 20 dB

Applications:

- Test and Measurement
- Military Communications
- Commercial Communications
- Wireless Communications
- SATCOM

Fairview Microwave
 301 Leora Ln., Suite 100
 Lewisville, TX 75056
 Tel: 1-800-715-4396 / (972) 649-6678
 Fax: (972) 649-6689
www.fairviewmicrowave.com
sales@fairviewmicrowave.com

Shock
Vibration
Altitude

20G for 11msec half sine wave, 3 axis both directions
25g RMS (15 degrees 2KHz) endurance, 1 hour per axis
30,000 ft.

Compliance Certifications (see [product page](#) for current document)

Plotted and Other Data

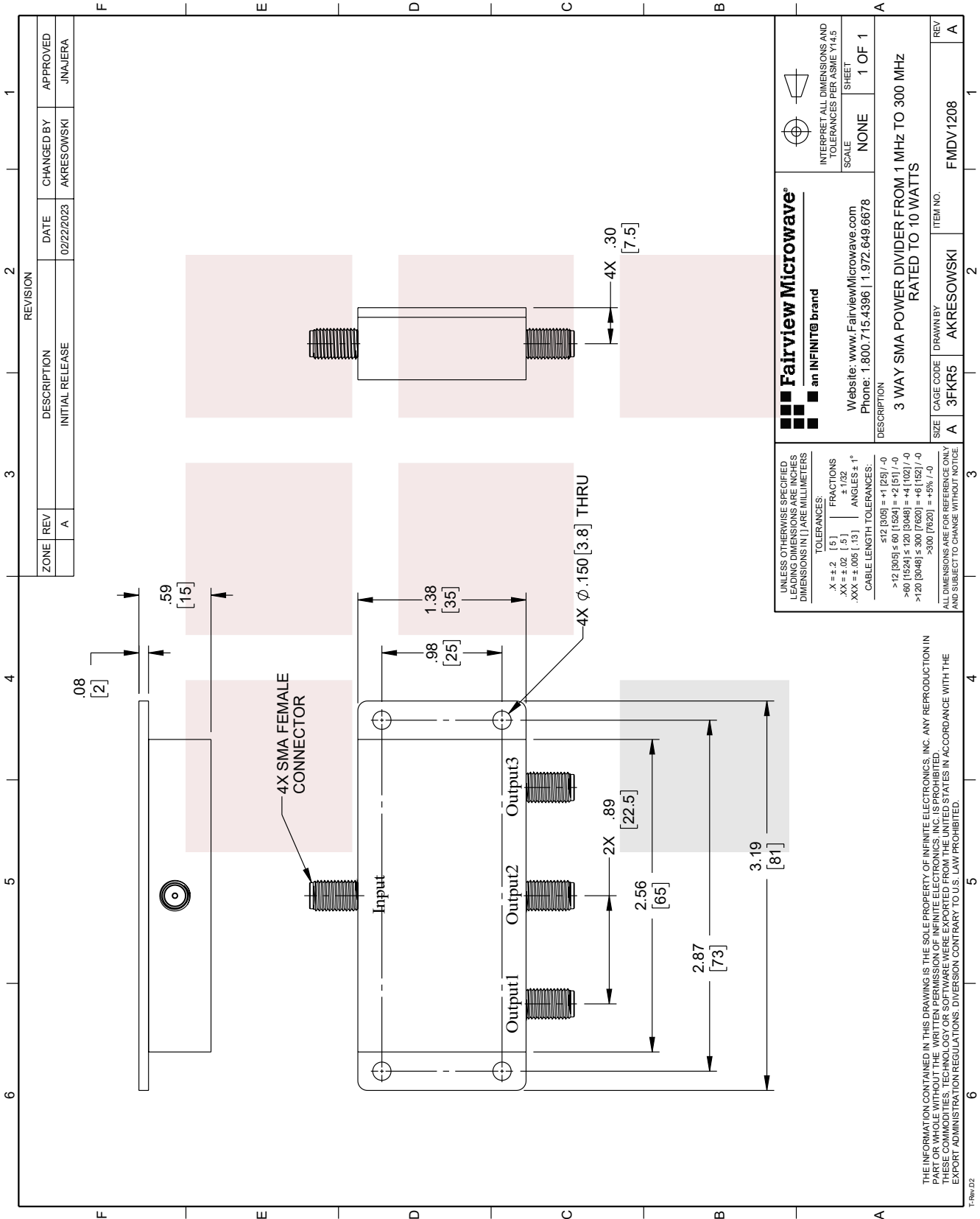
Notes:

3 way Power Divider SMA Connectors from 1 MHz to 300 MHz Rated at 10 Watts from Fairview Microwave is in-stock and available to ship same-day. All of our RF/microwave products are available off-the-shelf from our ISO 9001:2008 certified facilities in Lewisville, Texas. Fairview Microwave is RF on-demand.

For additional information on this product, please click the following link: [3 way Power Divider SMA Connectors from 1 MHz to 300 MHz Rated at 10 Watts FMDV1208](#)

URL: <https://www.fairviewmicrowave.com/3-way-power-divider-300-mhz-fmdv1208-p.aspx>

The information contained in this document is accurate to the best of our knowledge and representative of the part described herein. It may be necessary to make modifications to the part and/or the documentation of the part, in order to implement improvements. Fairview Microwave reserves the right to make such changes as required. Unless otherwise stated, all specifications are nominal. Fairview Microwave does not make any representation or warranty regarding the suitability of the part described herein for any particular purpose, and Fairview Microwave does not assume any liability arising out of the use of any part or documentation.



REVISION		DATE	CHANGED BY	APPROVED
ZONE	REV	DESCRIPTION		
	A	INITIAL RELEASE	AKRESOWSKI	JNAJERA

<p>Fairview Microwave an INFINIT[®] brand</p>		<p>INTERPRET ALL DIMENSIONS AND TOLERANCES PER ASME Y14.5</p>
<p>Website: www.FairviewMicrowave.com Phone: 1.800.715.4396 1.972.649.6678</p>		<p>SCALE: NONE SHEET: 1 OF 1</p>
<p>DESCRIPTION: 3 WAY SMA POWER DIVIDER FROM 1 MHz TO 300 MHz RATED TO 10 WATTS</p>		
SIZE: A	CAGE CODE: 3FKR5	ITEM NO.: FMDV1208
REV: A	DRAWN BY: AKRESOWSKI	REV: A

UNLESS OTHERWISE SPECIFIED, DIMENSIONS ARE IN INCHES AND DIMENSIONS IN PARETHESISES ARE IN MILLIMETERS.

TOLERANCES:
 .X = ±.2 [5] FRACTIONS ±.132
 .XX = ±.02 [.5] ANGLES ± 1°
 .XXX = ±.005 [.13]

CABLE LENGTH TOLERANCES:
 ≤12 [305] = ±1 [25] / -0
 >12 [305] ≤ 60 [1524] = +2 [51] / -0
 >60 [1524] ≤ 120 [3048] = +4 [102] / -0
 >120 [3048] ≤ 300 [7620] = +6 [152] / -0
 >300 [7620] = +5% / -0

ALL DIMENSIONS ARE FOR REFERENCE ONLY AND SUBJECT TO CHANGE WITHOUT NOTICE.

THE INFORMATION CONTAINED IN THIS DRAWING IS THE SOLE PROPERTY OF INFINITE ELECTRONICS, INC. ANY REPRODUCTION IN THESE COMMODITIES TECHNOLOGY OF SOFTWARE WHEN EXPORTED FROM THE UNITED STATES IN ACCORDANCE WITH THE EXPORT ADMINISTRATION REGULATIONS. DIVERSION CONTRARY TO U.S. LAW PROHIBITED.