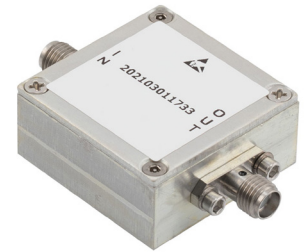


## SMA Female 2x Frequency Multiplier with 8 GHz to 16 GHz Output and 17 dB Conversion Loss

The FMFX2014 is a passive Frequency Doubler (x2) module that covers a broad output frequency bandwidth from 8 GHz to 16 GHz. Typical performance includes 17 dB conversion loss, 25 dB fundamental Isolation, with an RF input drive level of 12 to 18 dBm. The design does not require any DC voltage to operate. Maximum RF input power is +27 dBm with an operational temperature range of -40° C to +85° C. The rugged and compact package assembly supports SMA female connectors. And for highly reliable operation, the model is designed to meet a variety of MIL-STD-202 test conditions including shock, vibration, altitude, and humidity.



### Features:

- Passive Frequency Doubler (x2)
- 4 to 8 GHz input Frequency
- 8 to 16 GHz output frequency
- Conversion loss 17 dB typ
- Fundamental Isolation 25 dB typ
- RF Input Drive Level: 12 to 18 dBm
- Max RF Input Power: +27 dBm
- SMA Female Connectors
- -40° C to +85° C Operating Temperature
- 50 Ohm Design
- Rugged Design meets MIL-STD-202 Test Conditions

### Electrical Specifications (TA= 25°C, Pin = +15 dBm)

Description	Min	Typ	Max	Units
Input Frequency Range	4,000		8,000	MHz
Output Frequency Range	8,000		16,000	MHz
Impedance		50		Ohms
Input Power (CW)	+12		+18	dBm
Conversion Loss		17	23	dB
Fundamental Isolation*	13	25		dB
3F0 Isolation*	23	35		dB
Input VSWR(S11 @ 6 GHz)		2.3:1	3.5:1	
Output VSWR(S22 @ 12 GHz)		2:1	3:1	

\*Isolation with respect to output power level of 2F0

### Mechanical Specifications

Size	
Length	1.25 in [31.75 mm]
Width	0.563 in [14.3 mm]
Height	1.25 in [31.75 mm]
Weight	0.003 lbs [1.36 g]
Output Connector	SMA Female

### Environmental Specifications

Temperature	
Operating Range	-40 to +85 deg C
Storage Range	-65 to +150 deg C
Humidity	MIL-STD-202, Method 103B, Condition B
Shock	MIL-STD-202F, Method 213B, Condition B
Vibration	MIL-STD-202F, Method 204D, Condition B
Altitude	MIL-STD-202F, Method 105C, Condition B

### Compliance Certifications (see [product page](#) for current document)

### Plotted and Other Data

Notes:

### Applications:

- Aerospace & Defense
- Test & Measurement
- Microwave Radio Systems
- Military & Commercial Communication Systems
- Research & Development
- SATCOM
- Wireless Communications

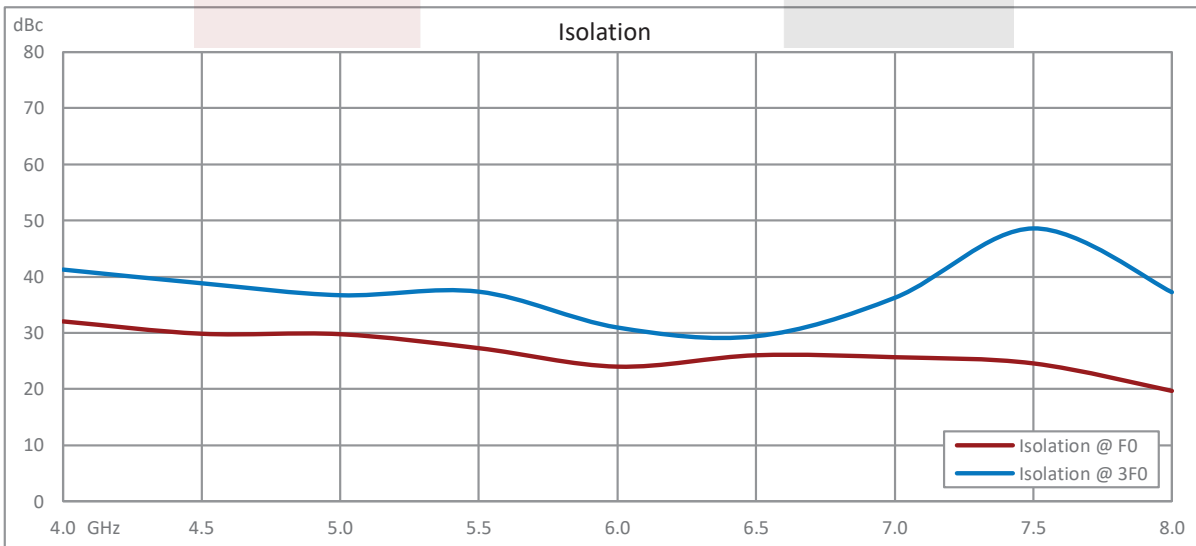
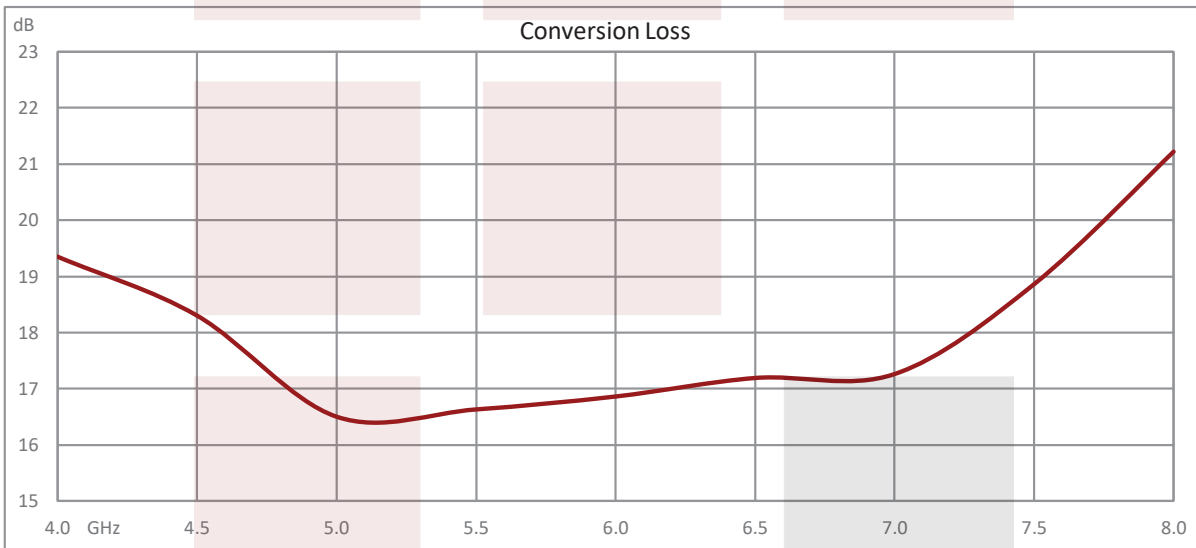
Fairview Microwave  
 301 Leora Ln., Suite 100  
 Lewisville, TX 75056  
 Tel: 1-800-715-4396 / (972) 649-6678  
 Fax: (972) 649-6689  
[www.fairviewmicrowave.com](http://www.fairviewmicrowave.com)  
[sales@fairviewmicrowave.com](mailto:sales@fairviewmicrowave.com)

**Absolute Maximum Rating**

**Absolute Maximum Ratings**

Parameter	Maximum
RF Input Power	+27dB
Operating Temperature	-40 °C to +85 °
Storage Temperature	-65 °C to +150 °

**Typical Performance Data**



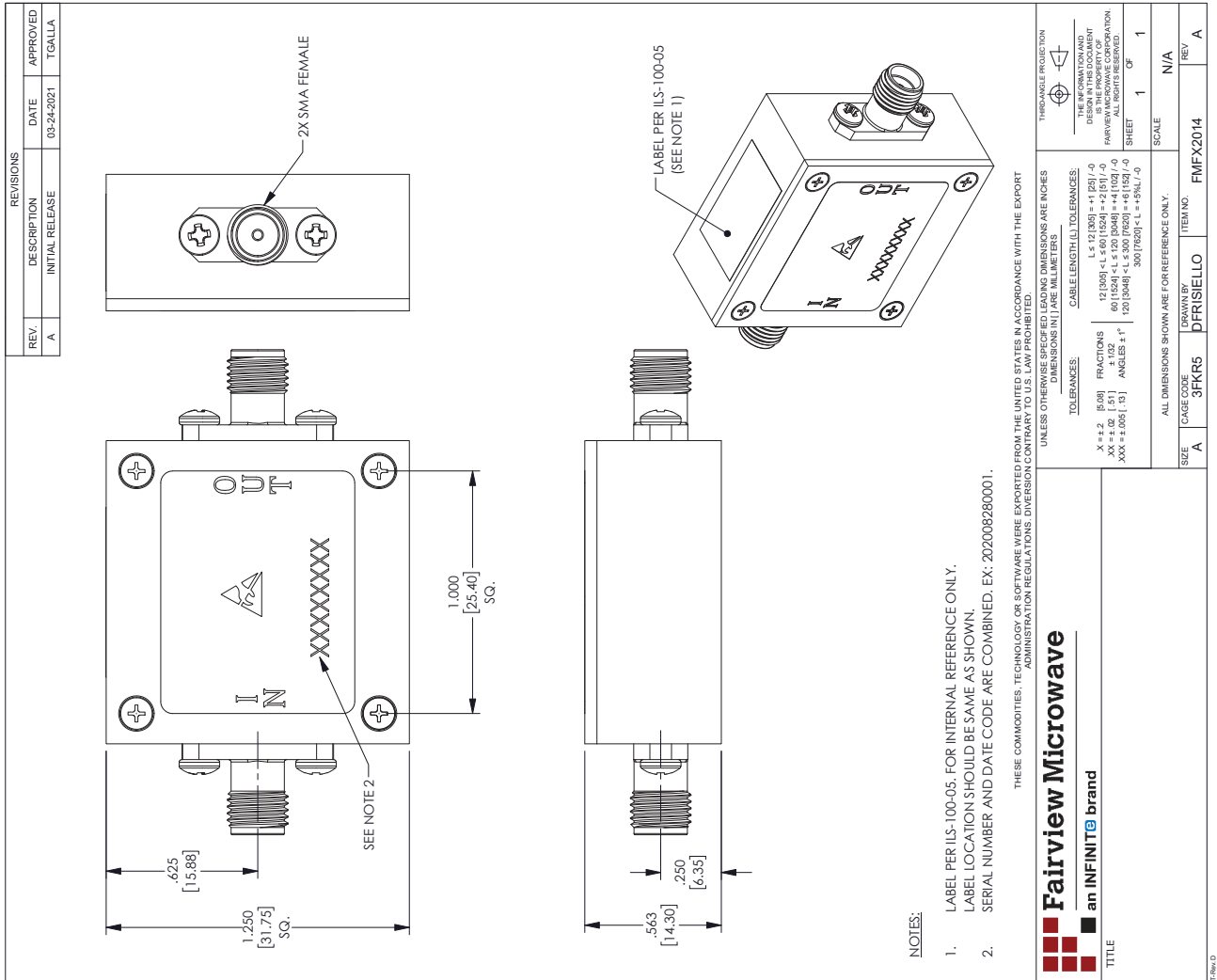
SMA Female 2x Frequency Multiplier with 8 GHz to 16 GHz Output and 17 dB Conversion Loss from Fairview Microwave is in-stock and available to ship same-day. All of our RF/microwave products are available off-the-shelf from our ISO 9001:2008 certified facilities in Lewisville, Texas. Fairview Microwave is RF on-demand.

For additional information on this product, please click the following link: [SMA Female 2x Frequency Multiplier with 8 GHz to 16 GHz Output and 17 dB Conversion Loss FMFX2014](#)

URL: <https://www.fairviewmicrowave.com/sma-2x-frequency-multiplier-16-ghz-17-db-fmfx2014-p.aspx>

The information contained in this document is accurate to the best of our knowledge and representative of the part described herein. It may be necessary to make modifications to the part and/or the documentation of the part, in order to implement improvements. Fairview Microwave reserves the right to make such changes as required. Unless otherwise stated, all specifications are nominal. Fairview Microwave does not make any representation or warranty regarding the suitability of the part described herein for any particular purpose, and Fairview Microwave does not assume any liability arising out of the use of any part or documentation.





SMA Female 2x Frequency Multiplier with 8 GHz to 16 GHz Output and 17 dB Conversion Loss