

Matching Pad 50 Ohm TNC Female to 75 Ohm F Female Operating from DC to 3 GHz

Fairview Microwave's FMMP1110 is a 50 ohm TNC female to 75 ohm F female matching pad that operates from DC to 3 GHz. This TNC to F impedance matching pad offers a low VSWR of 1.25:1 max and attenuation of 7.5 dB max. FMMP1110 50 ohm to 75 ohm minimum loss pad has a maximum CW power rating of 0.5 Watt. Matching pads are used to match the different impedance between two devices, maximizing power transfer between the two impedances. Fairview Microwave's minimum loss impedance matching pads are available in various connector combinations to fit your needs, all of which ship the same day.

Electrical Specifications

Description	Min	Typ	Max	Units
Frequency Range	DC		3	GHz
VSWR		1.15:1	1.25:1	
Attenuation		4	7.5	dB
Input Power, CW			0.5	Watts

Mechanical Specifications

Size

Length	2.02 in [51.31 mm]
Width	0.57 in [14.48 mm]
Height	0.57 in [14.48 mm]
Weight	0.04 lbs [18.14 g]
Housing Material and Plating	Brass, Tri-Metal

Connector 1

Description	Connector
Type	TNC Female
Impedance	50 Ohms
Inner Conductor Material and Plating	Phosphor Bronze, Gold
Body Material and Plating	Brass, Tri-Metal

Connector 2

Description	Connector
Type	F Female
Impedance	75 Ohms
Inner Conductor Material and Plating	beryllium copper, Gold
Body Material and Plating	Brass, Tri-Metal



Configuration:

- Connector 1: 50 Ohms TNC Female
- Connector 2: 75 Ohms F Female

Features:

- DC to 3 GHz Frequency Range
- Low VSWR < 1.25:1
- 0.5 W Max Power (CW)

Applications:

- CATV / Cable Networks
- Test and Measurement
- Communication Systems
- Wireless Systems

Fairview Microwave
 301 Leora Ln., Suite 100
 Lewisville, TX 75056
 Tel: 1-800-715-4396 / (972) 649-6678
 Fax: (972) 649-6689
www.fairviewmicrowave.com
sales@fairviewmicrowave.com

Compliance Certifications (see [product page](#) for current document)

Plotted and Other Data

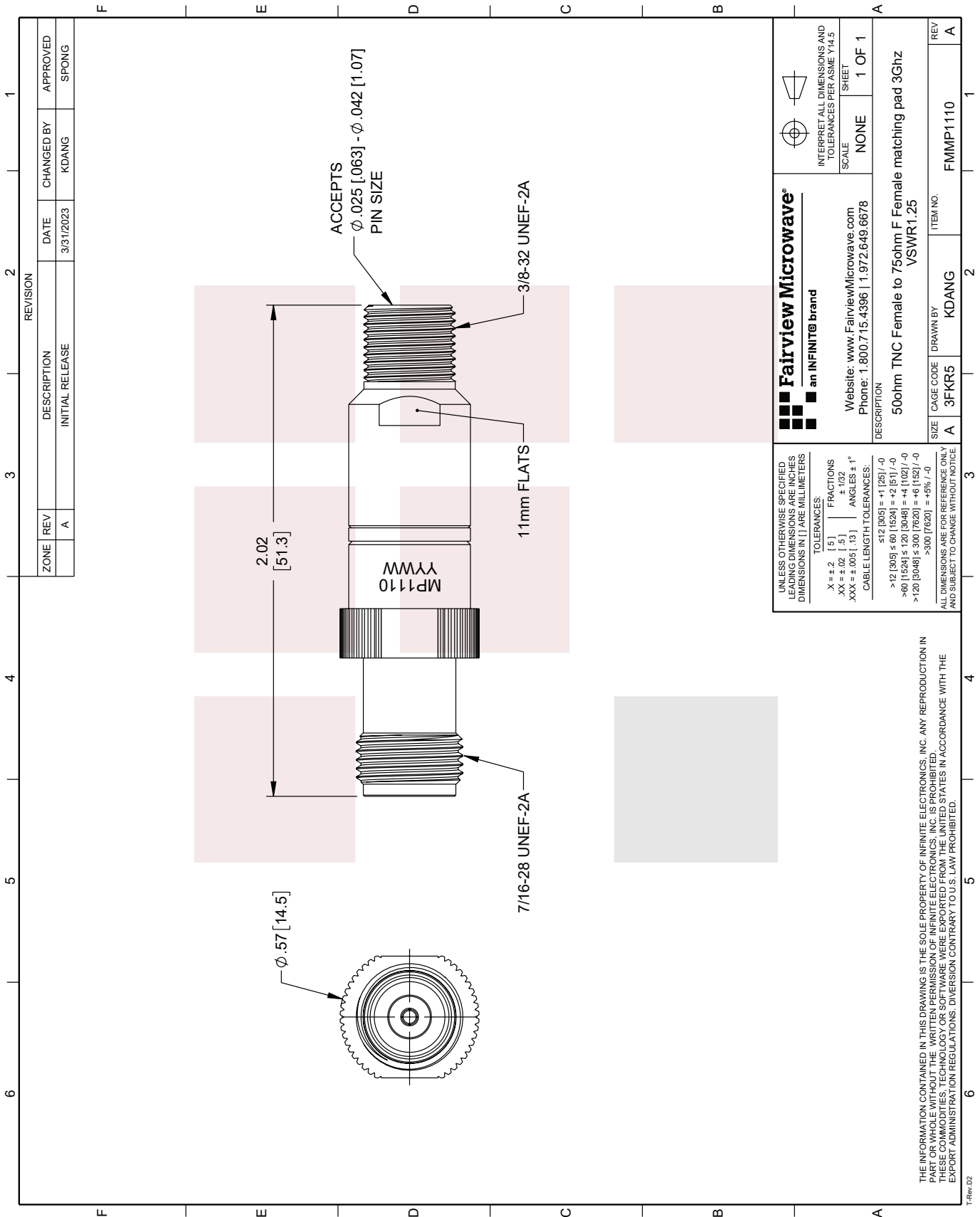
Notes:

Matching Pad 50 Ohm TNC Female to 75 Ohm F Female Operating from DC to 3 GHz from Fairview Microwave is in-stock and available to ship same-day. All of our RF/microwave products are available off-the-shelf from our ISO 9001:2008 certified facilities in Lewisville, Texas. Fairview Microwave is RF on-demand.

For additional information on this product, please click the following link: [Matching Pad 50 Ohm TNC Female to 75 Ohm F Female Operating from DC to 3 GHz FMMP1110](#)

URL: <https://www.fairviewmicrowave.com/matching-pad-tnc-f-3-mhz-fmmp1110-p.aspx>

The information contained in this document is accurate to the best of our knowledge and representative of the part described herein. It may be necessary to make modifications to the part and/or the documentation of the part, in order to implement improvements. Fairview Microwave reserves the right to make such changes as required. Unless otherwise stated, all specifications are nominal. Fairview Microwave does not make any representation or warranty regarding the suitability of the part described herein for any particular purpose, and Fairview Microwave does not assume any liability arising out of the use of any part or documentation.



ZONE		REVISION		DESCRIPTION		DATE		CHANGED BY		APPROVED	
A				INITIAL RELEASE		3/31/2023		KDANG		SPONG	

<p>Fairview Microwave an INFINIT[®] brand</p> <p>Website: www.FairviewMicrowave.com Phone: 1.800.715.4396 1.972.649.6678</p>		<p>INTERPRET ALL DIMENSIONS AND TOLERANCES PER ASME Y14.5 SHEET</p> <p>SCALE: NONE</p> <p>SHEET: 1 OF 1</p>	
<p>DESCRIPTION: 50ohm TNC Female to 75ohm F Female matching pad 3Ghz VSWR1.25</p>			
SIZE: A	CAGE CODE: 3FKR5	DRAWN BY: KDANG	ITEM NO.: FMMP1110
REV: A			REV: A

UNLESS OTHERWISE SPECIFIED, LEADING DIMENSIONS ARE INCHES DIMENSIONS IN [] ARE MILLIMETERS

TOLERANCES:

.X = ±.2	[.5]	FRACTIONS	± 1/32
.XX = ±.02	[.5]	ANGLES ± 1°	
.XXX = ±.005	[.13]		

CABLE LENGTH TOLERANCES:

≤ 12 [305]	± .01 [253]	/ -0
> 12 [305]	± .02 [508]	/ -0
> 60 [1524]	± .04 [1016]	/ -0
> 120 [3048]	± .08 [2032]	/ -0
> 300 [7620]	± .16 [4064]	/ -0

ALL DIMENSIONS ARE FOR REFERENCE ONLY AND SUBJECT TO CHANGE WITHOUT NOTICE

THE INFORMATION CONTAINED IN THIS DRAWING IS THE SOLE PROPERTY OF INFINITE ELECTRONICS, INC. ANY REPRODUCTION IN PART OR WHOLE WITHOUT THE WRITTEN PERMISSION OF INFINITE ELECTRONICS, INC. IS PROHIBITED. THESE DIMENSIONS ARE FOR INFORMATION ONLY AND ARE NOT TO BE USED FOR THE DESIGN OF ANY PRODUCT. EXPORT ADMINISTRATION REGULATIONS: DIVERSION CONTRARY TO U.S. LAW PROHIBITED.