

**Coaxial RF GS Probe with 1,500 Micron Pitch Up to 20 GHz with 3.5mm Interface and Cable Mount**

Coaxial RF GS probe, part number FMPB1003, from Fairview Microwave is in-stock and ships same day. This probe is part of a full family of GS (SG) and GSG probe versions that are well suited for PCB probing, device characterization and RF probing on test fixtures. The probes easily connect to a RF coaxial cable to connect RF test equipment, including network analyzers, spectrum analyzers, signal sources or BERTs. While they are designed to be used manually with a coaxial cable assembly, they can also be used with Fairview Microwave's optional probe positioner for added stability and probe repeatability. Differential measurements are also possible by using pairs of RF GS probes in tandem with skew matched cable assemblies.

Fairview's coaxial RF GS probe datasheet specifications and outline drawing are shown in this PDF fellow. Our extensive offering of RF, microwave and millimeter wave interconnects allows designers to configure and customize their signal connections however they like. From making consistent RF probe measurements or probing and characterizing PCBs, Fairview Microwave has the right probing and connection solutions to meet your needs.



**Configuration:**

- Single Channel
- Cable Mount
- GS Tip
- 3.5mm Female Connector
- 1,500 μm Pitch

**Features:**

- 20 GHz Performance
- Good Return Loss of 10 dB
- Convenient Cable Mount
- Gold Plated GS Contacts

**Applications:**

- S-parameter Probing
- RF Coaxial Probing
- Signal Integrity Measurements
- Device Characterization
- Coplanar Waveguide Probing

**Electrical Specifications**

Description	Min	Typ	Max	Units
Frequency Range	DC		20	GHz
Impedance		50		Ohms
Return Loss			10	dB
Insertion Loss			0.5	dB

**Mechanical Specifications**

**Probe**

Configuration	GS
Pin Type	Pogo Pin
Pitch	1,500 μm [0.06 in]
Secondary Pitch	2,500 μm [0.1 in]

**Connector**

Connector Type	3.5mm Female
----------------	--------------

**Size**

Length	1.18 in [29.97 mm]
Weight	0.008 lbs [3.63 g]

Mechanical Specification Notes:

3.5mm Female is compatible with 3.5mm(M), 2.92mm(M) and SMA(M) cable connections

**Environmental Specifications**

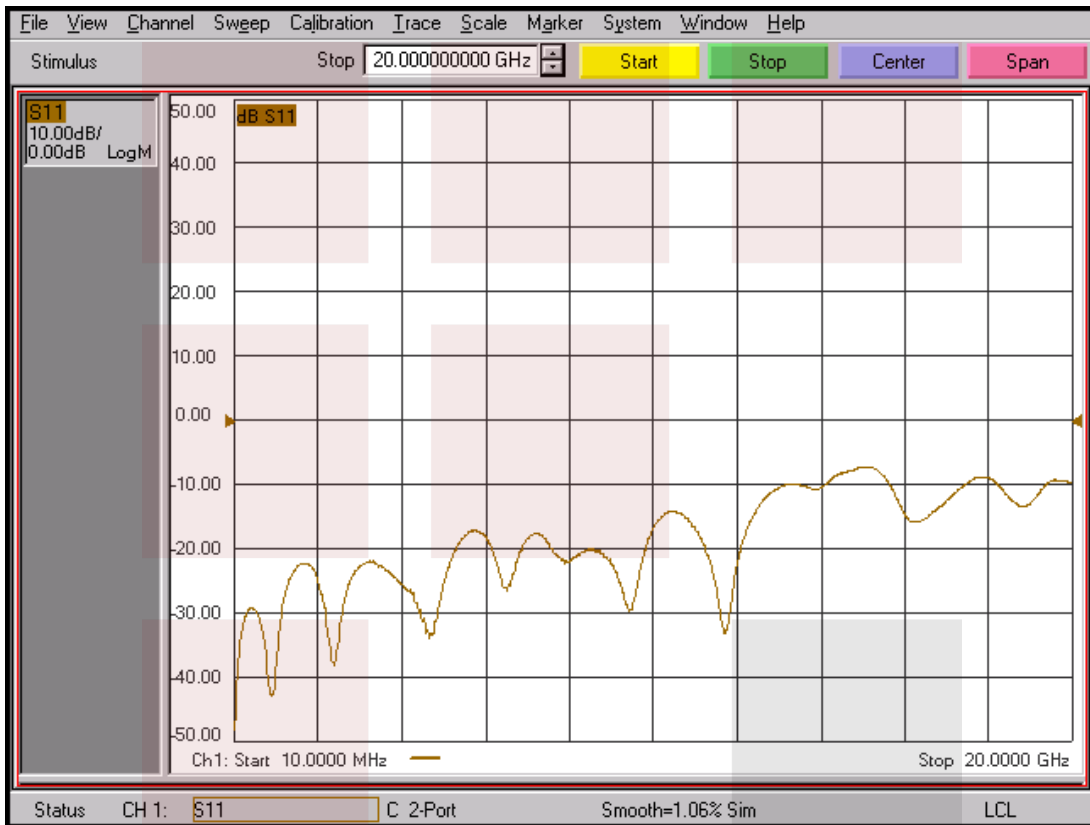
**Compliance Certifications** (see [product page](#) for current document)

**Plotted and Other Data**

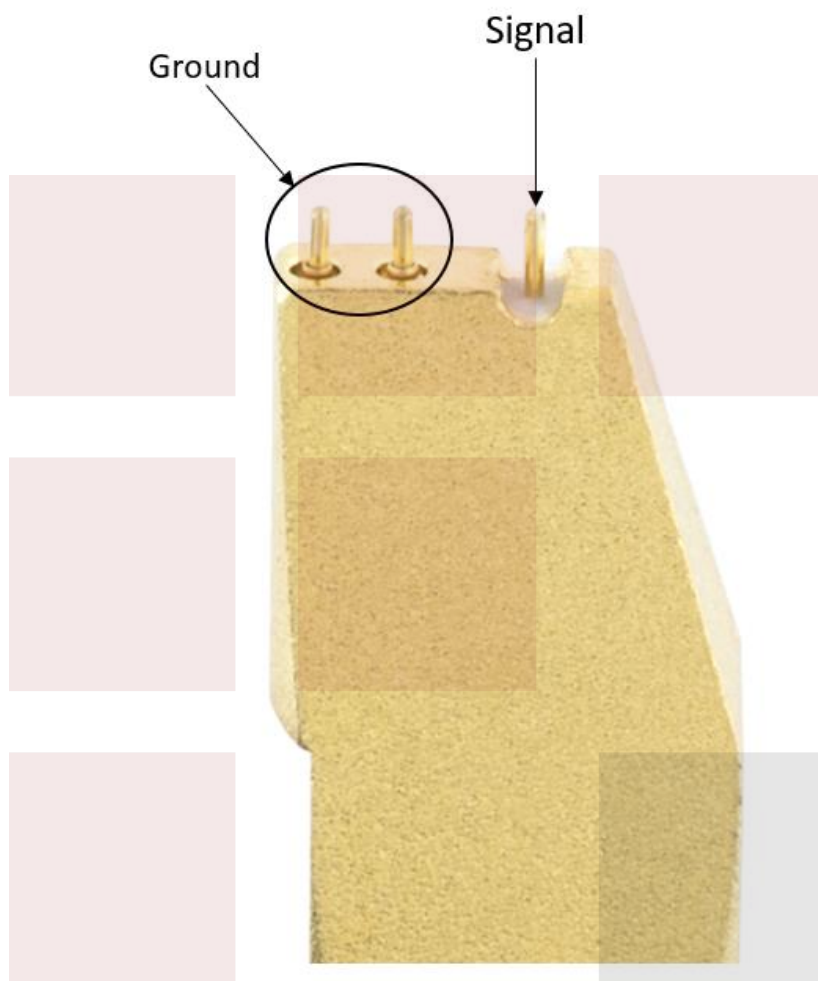
Notes:

Fairview Microwave  
 301 Leora Ln., Suite 100  
 Lewisville, TX 75056  
 Tel: 1-800-715-4396 / (972) 649-6678  
 Fax: (972) 649-6689  
[www.fairviewmicrowave.com](http://www.fairviewmicrowave.com)  
[sales@fairviewmicrowave.com](mailto:sales@fairviewmicrowave.com)

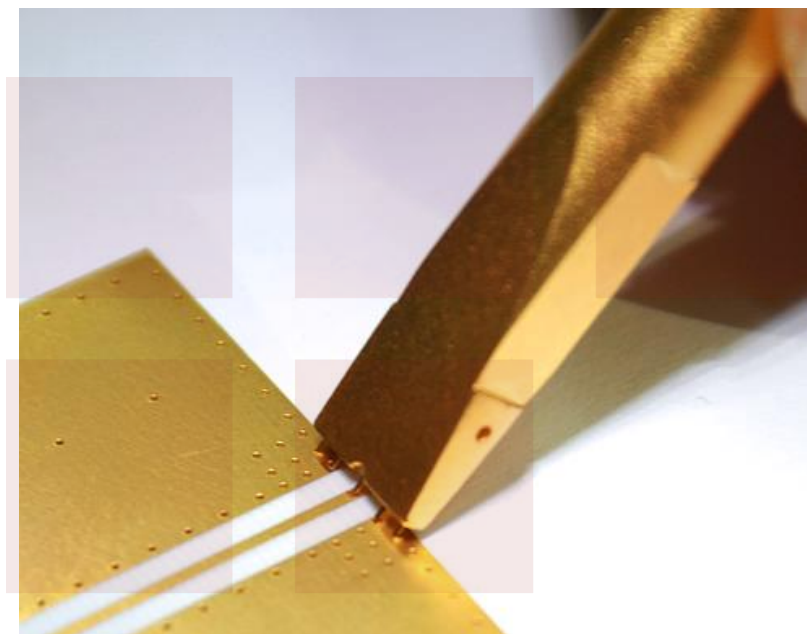
**Typical Performance Data**



TEST DATA TAKEN WITH 2 FMPB1003 PROBES (IN/OUT)  
 ON EITHER END OF A 40mm COPLANAR WAVEGUIDE



T-PROBE CONTACT WITH BOARD

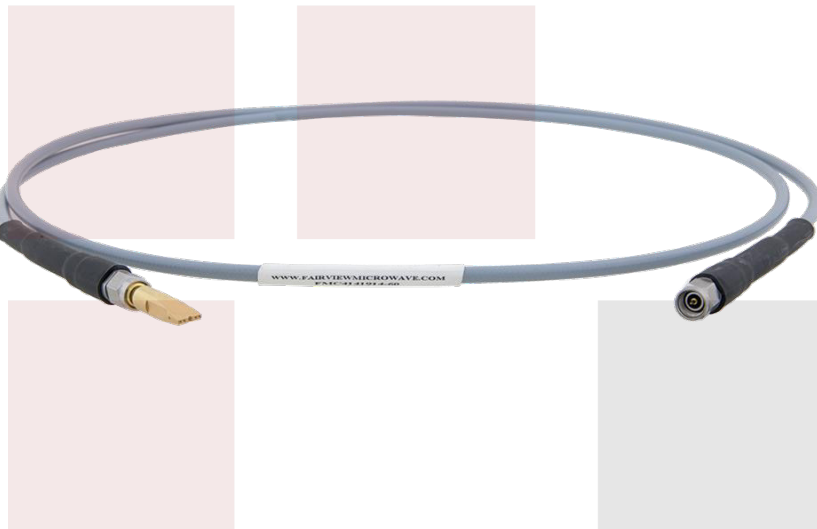


(EXAMPLE INTERFACE SHOWN)

PROBE IN POSITIONER, FMTL1000



SHOWN WITH FMC4141914 CABLE ASSEMBLY



(POSITIONER AND CABLE ASSEMBLY SOLD SEPARATELY)

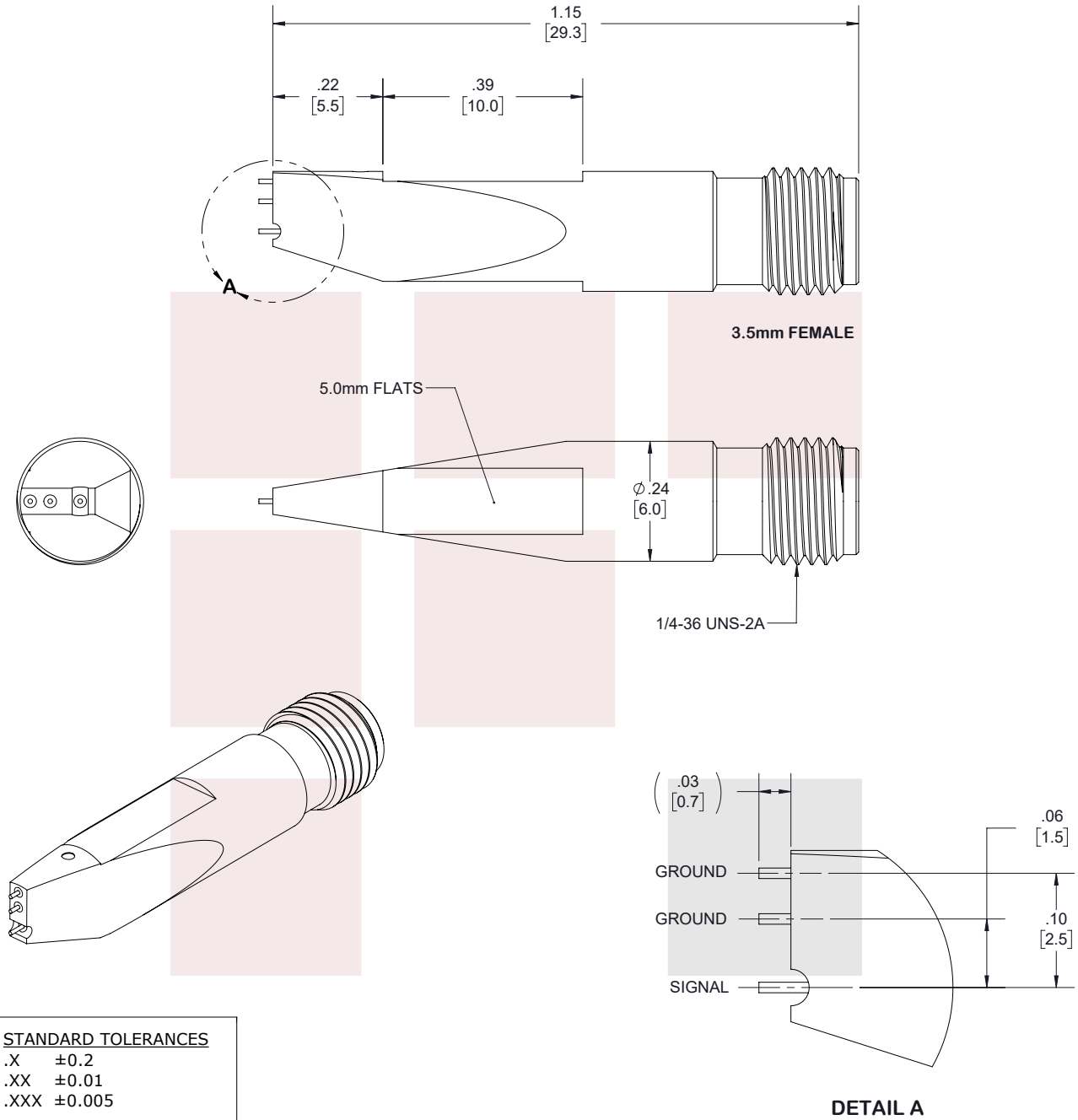
Coaxial RF GS Probe with 1,500 Micron Pitch Up to 20 GHz with 3.5mm Interface and Cable Mount from Fairview Microwave is in-stock and available to ship same-day. All of our RF/microwave products are available off-the-shelf from our ISO 9001:2008 certified facilities in Allen, Texas. Fairview Microwave is RF on-demand.

For additional information on this product, please click the following link: [Coaxial RF GS Probe with 1,500 Micron Pitch Up to 20 GHz with 3.5mm Interface and Cable Mount FMPB1003](#)

URL: <https://www.fairviewmicrowave.com/coaxial-rf-gs-probe-1500-micron-pitch-20ghz-3.5mm-cable-mount-fmpb1003-p.aspx>

The information contained in this document is accurate to the best of our knowledge and representative of the part described herein. It may be necessary to make modifications to the part and/or the documentation of the part, in order to implement improvements. Fairview Microwave reserves the right to make such changes as required. Unless otherwise stated, all specifications are nominal. Fairview Microwave does not make any representation or warranty regarding the suitability of the part described herein for any particular purpose, and Fairview Microwave does not assume any liability arising out of the use of any part or documentation.





STANDARD TOLERANCES	
.X	±0.2
.XX	±0.01
.XXX	±0.005

\*STANDARD TOLERANCES APPLY ONLY TO DIMENSIONS IN INCHES

<b>FAIRVIEW MICROWAVE INC.</b>		NOTES: 1. UNLESS OTHERWISE SPECIFIED ALL DIMENSIONS ARE NOMINAL. 2. ALL SPECIFICATIONS ARE SUBJECT TO CHANGE WITHOUT NOTICE AT ANY TIME. 3. DIMENSIONS ARE IN INCHES [mm].			
ALLEN, TX 75013 WWW.FAIRVIEWMICROWAVE.COM		DWG NO <b>FMPB1003</b>		CAGE CODE <b>3FKR5</b>	
TITLE Coaxial RF GS Probe with 1,500 Micron Pitch Up to 20 GHz with 3.5mm Interface and Cable Mount		CAD FILE 011118	SHEET 1 OF 1	SCALE N/A	SIZE A
					7361