

Non-Penetrating Antenna Peak Roof Mount 34-inch Pole Only

The Fairview Microwave's FMPRMARM non-penetrating antenna peak roof mount pole is available for antenna installations and it is easy to transport. This 34-inch non-penetrating antenna mount pole has a strong and rugged design made up of galvanized steel. Our peak roof mount is designed for telecom installers, DIY installers, and satellite dish installers.

This peak roof mount pole has a powder coating to withstand harsh climates and corrosion. The non-penetrating antenna peak roof mount has operating windspeeds up to 50 Km/h or 31 MPH and survives at windspeeds up to 100 Km/h or 62 MPH. Our non-penetrating roof mount is used for peak roofs and is available with easy assembly instructions.

The non-penetrating peak roof mount is suitable for wireless internet providers, crypto enterprises, and commercial building owners that can be mounted on roofs. Ballast material (i.e., cinder blocks, concrete blocks, etc.) are used in these non-drill roof mounts to anchor them to the roof. This non-penetrating antenna peak roof mount pole doesn't need screws or anchors, which minimizes damage to the roofs.

Fairview Microwave's has the largest in-stock selection of non-penetrating antenna peak roof mount pole for international and domestic orders. Make your online purchase right now to take advantage of our same-day shipping. For further information on similar products, our expert technical support and knowledgeable sales team can help you get the perfect 34-inch non-penetrating antenna roof mount pole for your requirements.

Note: Ballast data should be determined by a local professional engineer. Adequate ballast material must be determined and provided by others.



Features:

- Easy assembly instructions
- 5 ft tall center mast
- Secondary arm of 2.75 ft
- Powder coated galvanized steel
- Operating windspeeds up to 50 KM/h (31 mph)
- Survival windspeeds up to 100 KM/h (62 mph)
- All assembly hardware included
- Optional mat for max surface tension/protection
- Standard 16" x 8" cinder blocks (Not included)
- 150-degree max angle for roof pitch

Applications:

- De-centralized wireless networks (FreedomFi, Helium, POLLEN, XNET, MetaBlox, etc.)
- Wireless or satellite antenna
- Scientific and weather instrumentations
- Security camera and instruments
- Solar panel

Fairview Microwave
301 Leora Ln., Suite 100
Lewisville, TX 75056
Tel: 1-800-715-4396 / (972) 649-6678
Fax: (972) 649-6689
www.fairviewmicrowave.com
sales@fairviewmicrowave.com

Note:

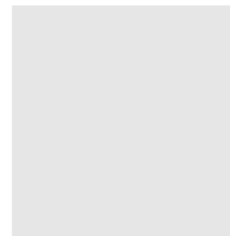
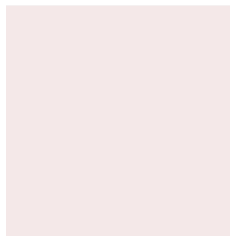
- **Ballast data should be determined by a local professional engineer. Adequate ballast material must be determined and provided by others**
- Prior to installation, verify that the installation, roof material and supporting structures have been investigated and found capable to withstand load
- Place ballast material (i.e., cinder blocks, concrete blocks, etc.) evenly on both side with at least 4 on each side, total 8 blocks per mount approx. 300lbs over all base angles (Estimated Operational Ballast)
- All antenna installations MUST be grounded
- **Fairview Microwave RECOMMENDS THAT BALLAST MATERIAL ALWAYS BE PLACED PRIOR TO MOUNTING ANTENNAS AND THAT THE MOUNT BE SECURED TO PREVENT HAZARDS FROM OCCURRING UNDER EXTREME WIND LOADING CONDITION**
- Inspect all bolts and screws for optimal tightness (recommended torque 13-14 lbs-ft.) to ensure there is no loose gaps after installation
- Recommended to use self-tapping screws provided with mount to reduce the loading of the roof if working environment is allowed to drill
- Inspect the mount, antennas, and tightness of nuts at six-month maximum intervals

Operational	50 Km/h (31 mph)	Under recommended Load
Survival	100 Km/h (62 mph)	Under recommended Load

CONTACT A LOCAL PROFESSIONAL ENGINEER TO DETERMINE PROPER LOADING vs BALLAST WEIGHTS

Operational: It is workable under 50km/h wind speeds.

Survival: The products may be deformed but will not fly away.



Mechanical Specifications

Size

Length	34.25 in [869.95 mm]
Width	2.95 in [74.93 mm]
Height	2.95 in [74.93 mm]
Weight	7.7 lbs [3.49 kg]

Environmental Specifications

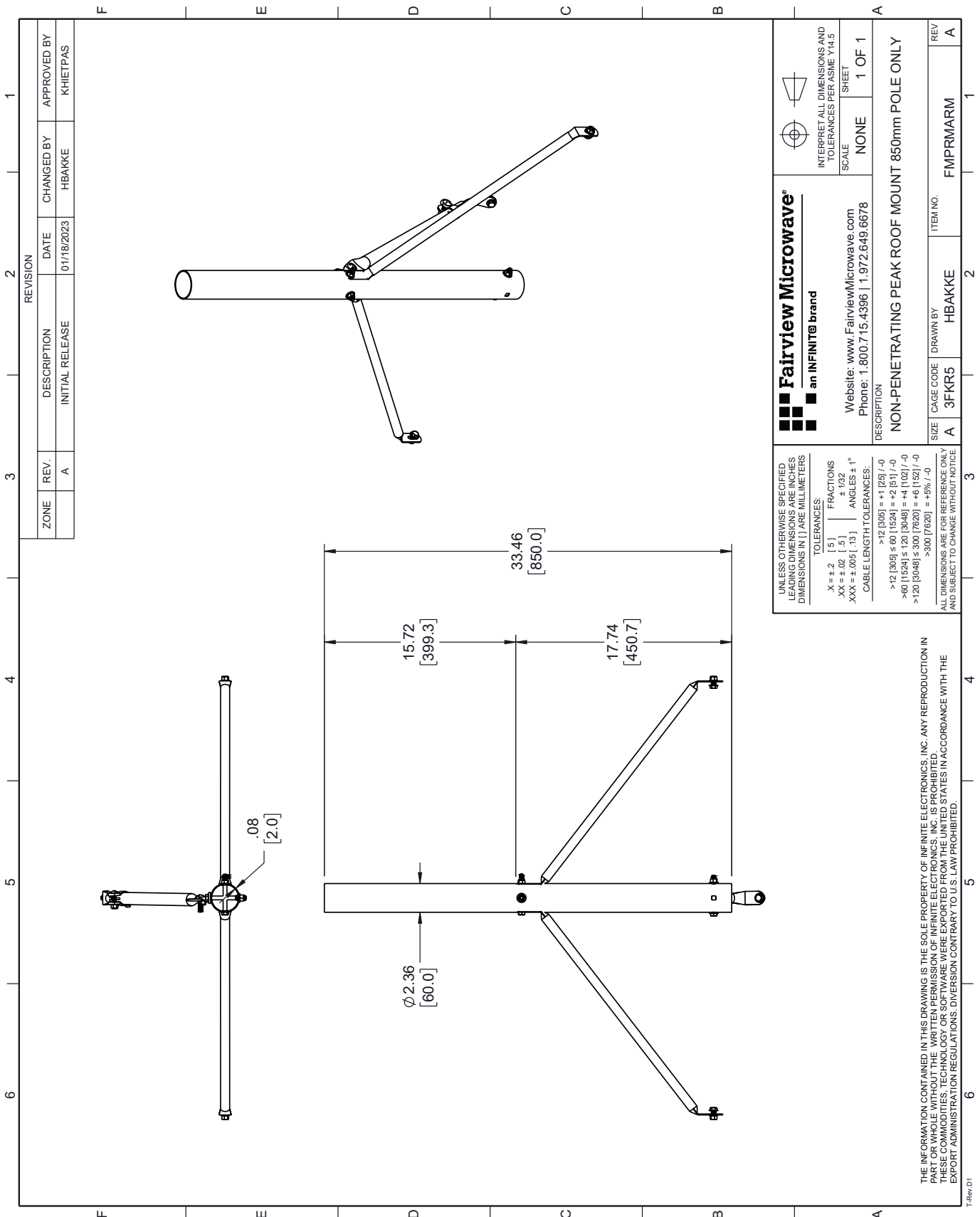
Operating Temperature, Min	-40 deg C
Operating Temperature, Max	80 deg C
Wind Velocity	31 MPH [49.89KPH]
Plating	Powder Coat
Material	Galvanized Steel
Package Quantity	1

Non-Penetrating Antenna Peak Roof Mount 34-inch Pole Only from Fairview Microwave is in-stock and available to ship same-day. All of our RF/microwave products are available off-the-shelf from our ISO 9001:2008 certified facilities in Lewisville, Texas. Fairview Microwave is RF on-demand.

For additional information on this product, please click the following link: [Non-Penetrating Antenna Peak Roof Mount 34-inch Pole Only](#)

URL: <https://www.fairviewmicrowave.com/non-penetrating-antenna-peak-roof-mount-34-inch-pole-only-fmprmarm-p.aspx>

The information contained in this document is accurate to the best of our knowledge and representative of the part described herein. It may be necessary to make modifications to the part and/or the documentation of the part, in order to implement improvements. Fairview Microwave reserves the right to make such changes as required. Unless otherwise stated, all specifications are nominal. Fairview Microwave does not make any representation or warranty regarding the suitability of the part described herein for any particular purpose, and Fairview Microwave does not assume any liability arising out of the use of any part or documentation.



REVISION		DATE	CHANGED BY	APPROVED BY
ZONE	REV.	DESCRIPTION	INITIAL RELEASE	
	A		01/18/2023	HBAKKE
				KHIETPAS

Fairview Microwave[®]
an INFINIT[®] brand

Website: www.FairviewMicrowave.com
Phone: 1.800.715.4396 | 1.972.649.6678

INTERPRET ALL DIMENSIONS AND TOLERANCES PER ASME Y14.5
SCALE: NONE
SHEET: 1 OF 1

DESCRIPTION:
NON-PENETRATING PEAK ROOF MOUNT 850mm POLE ONLY

SIZE	CAGE CODE	DRAWN BY	ITEM NO.	REV
A	3FKR5	HBAKKE	FMPRMARM	A

UNLESS OTHERWISE SPECIFIED, LEADING DIMENSIONS ARE INCHES DIMENSIONS IN [] ARE MILLIMETERS

TOLERANCES:
 .X = ±.2 [5] FRACTIONS
 .XX = ±.02 [.5] ±.132
 .XXX = ±.005 [.13] ANGLES ± 1°
 CABLE LENGTH TOLERANCES:
 >12 [305] = +1 [25] / -0
 >12 [305] ≤ 60 [1524] = +2 [51] / -0
 >60 [1524] ≤ 120 [3048] = +4 [102] / -0
 >120 [3048] ≤ 300 [7620] = +6 [152] / -0
 >300 [7620] = +5% / -0

ALL DIMENSIONS ARE FOR REFERENCE ONLY AND SUBJECT TO CHANGE WITHOUT NOTICE

THE INFORMATION CONTAINED IN THIS DRAWING IS THE SOLE PROPERTY OF INFINITE ELECTRONICS, INC. ANY REPRODUCTION IN PART OR WHOLE WITHOUT THE WRITTEN PERMISSION OF INFINITE ELECTRONICS, INC. IS PROHIBITED. THESE COMMODITIES, TECHNOLOGY OR SOFTWARE WERE EXPORTED FROM THE UNITED STATES IN ACCORDANCE WITH THE EXPORT ADMINISTRATION REGULATIONS. DIVERSION CONTRARY TO U.S. LAW PROHIBITED.