

2 Way Broadband Combiner SMA Female Input and Output from 700 MHz to 6 GHz rated 125 Watts



FMS0032

Features

- 0.7 to 6 GHz Frequency
- 125 watt max power
- Insertion Loss: < 0.9 dB
- Phase Balance: ± 5 degrees
- Amplitude Balance: ± 0.3 dB
- Isolation: >8 dB
- High Power Handling Capability

Applications

- Communications Systems
- Power Combining
- PCS, GSM, LTE, Cellular
- Amplifier Systems
- Amplifier Power Combining
- Wireless Infrastructures
- Defense Applications

Description

FMS0032 is a passive 2 way High Power Broadband RF Combiner with 50 ohm SMA connectors operating from 0.7 to 6 GHz, with max power at 125 watts. The FMS0032 has greater than 8 dB typical isolation, less than 0.9 dB typical low insertion loss and a Max VSWR of 1.35:1; along with a phase balance of ± 5 degrees and an amplitude balance of ± 0.3 dB. The RF Combiner operates in a temperature range from -55°C to 85°C.

Electrical Specifications

Design Reactive
Number of Input Ports 2

Description	Minimum	Typical	Maximum	Units
Frequency Range	0.7		6	GHz
Impedance		50		Ohms
Input VSWR			1.35:1	
Output VSWR			1.35:1	
Insertion Loss			0.9	dB
Isolation	8			dB
Amplitude Balance		± 0.3		dB
Phase Balance		± 5		Degrees
Power Handling (CW)			125	Watts

Mechanical Specifications

Size
 Length 5.2 in [132.08 mm]
 Width 3 in [76.2 mm]
 Height 1.1 in [27.94 mm]
 Weight 1.25 lbs [566.99 g]

Configuration
 Package Type Connectorized
 Input Connector SMA Female
 Output Connectors SMA Female

2 Way Broadband Combiner SMA Female Input and Output from 700 MHz to 6 GHz rated 125 Watts



FMS0032

Environmental Specifications

Temperature

Operating Range

-55 to +85 deg C

Compliance Certifications (see [product page](#) for current document)

Plotted and Other Data

Notes:

Typical Performance Data

2 Way Broadband Combiner SMA Female Input and Output from 700 MHz to 6 GHz rated 125 Watts from Fairview Microwave is in-stock and available to ship same-day. All of our RF/microwave products are available off-the-shelf from our ISO 9001:2008 certified facilities in Lewisville, Texas. Fairview Microwave is RF on-demand.

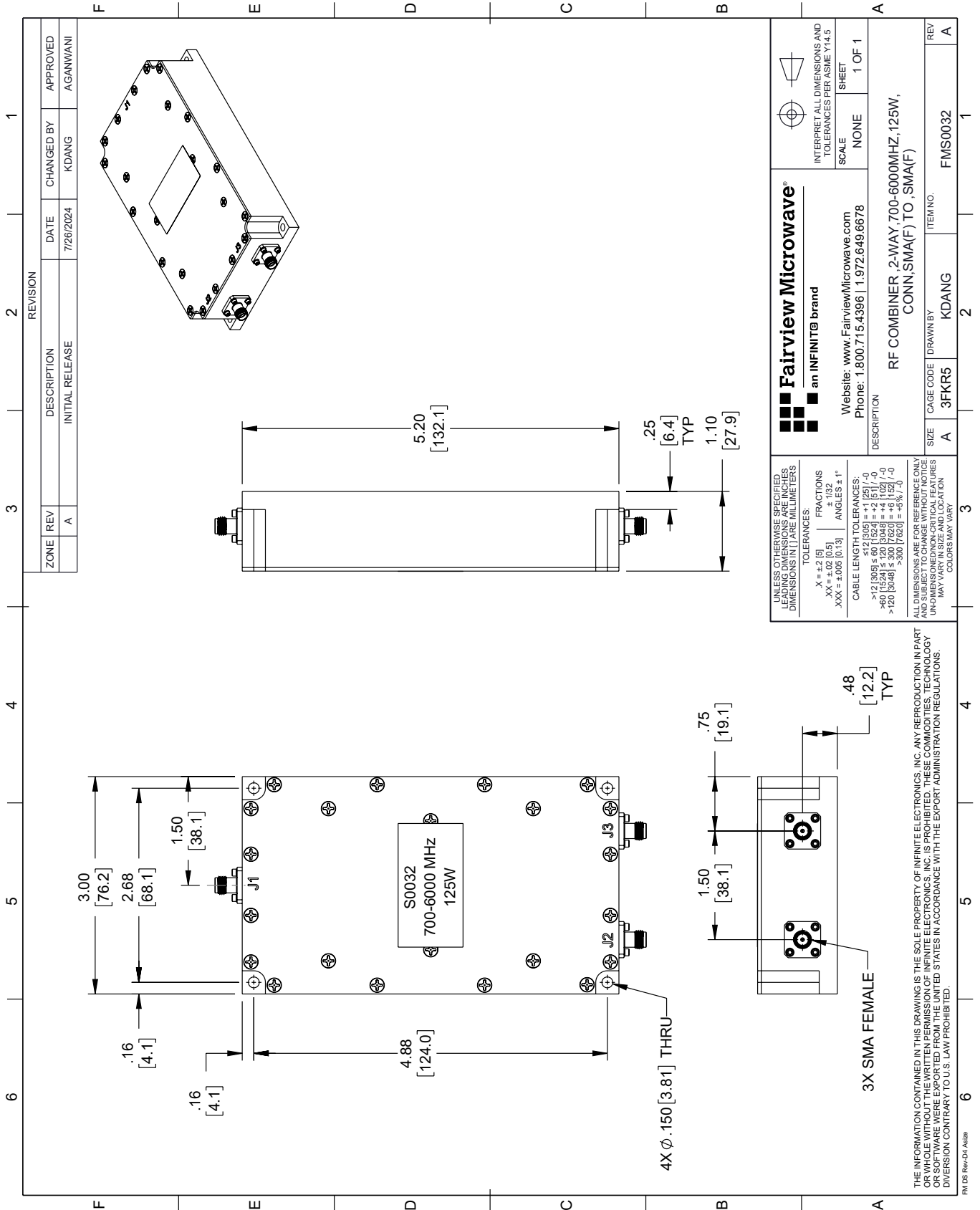
For additional information on this product, please click the following link: [2 Way Broadband Combiner SMA Female Input and Output from 700 MHz to 6 GHz rated 125 Watts FMS0032](#)

URL: <https://www.fairviewmicrowave.com/2-way-power-combiner-sma-broadband-700-mhz-6-ghz-125-watts-fms0032-p.aspx>

The information contained within this document is accurate to the best of our knowledge and representative of the part described herein. It may be necessary to make modifications to the part and/or the documentation of the part in order to implement improvements. Fairview Microwave reserves the right to make such changes as required. Unless otherwise stated, all specifications are nominal. Fairview Microwave does not make any representation or warranty regarding the suitability of the part described herein for any particular purpose, and Fairview Microwave does not assume liability arising out of the use of any part or document.

FMS0032 CAD Drawing

2 Way Broadband Combiner SMA Female Input and Output from 700 MHz to 6 GHz rated 125 Watts



REVISION		DATE	CHANGED BY	APPROVED
ZONE	REV			
	A	7/26/2024	KDANG	AGANWANI
DESCRIPTION				
INITIAL RELEASE				

 Fairview Microwave® an INFINIT® brand Website: www.FairviewMicrowave.com Phone: 1.800.715.4396 1.972.649.6678		 INTERPRET ALL DIMENSIONS AND TOLERANCES PER ASME Y14.5 SCALE NONE SHEET 1 OF 1
DESCRIPTION RF COMBINER, 2-WAY, 700-6000MHZ, 125W, CONN,SMA(F) TO ,SMA(F)		
SIZE	CAGE CODE	ITEM NO.
A	3FKR5	KDANG
DRAWN BY		REV
KDANG		A

UNLESS OTHERWISE SPECIFIED, LEADING DIMENSIONS ARE IN INCHES. DIMENSIONS IN [] ARE MILLIMETERS.

TOLERANCES:

.X = ±.2 [5]	FRACTIONS ± 1/32
.XX = ±.02 [0.5]	ANGLES ± 1°
.XXX = ±.005 [0.13]	

CABLE LENGTH TOLERANCES:

>12 [305] ≤ 60 [1524] = ±.1 [25] / -0
>60 [1524] ≤ 120 [3048] = ±.4 [102] / -0
>120 [3048] ≤ 300 [7620] = ±.6 [152] / -0
>300 [7620] = ±.8% / 0

ALL DIMENSIONS ARE FOR REFERENCE ONLY. UNDIMENSIONED/NON-CRITICAL FEATURES MAY VARY IN SIZE AND LOCATION. COLORS MAY VARY.

THE INFORMATION CONTAINED IN THIS DRAWING IS THE SOLE PROPERTY OF INFINITE ELECTRONICS, INC. ANY REPRODUCTION IN PART OR WHOLE WITHOUT THE WRITTEN PERMISSION OF INFINITE ELECTRONICS, INC. IS PROHIBITED. THESE COMMODITIES, TECHNOLOGY OR SOFTWARE WERE EXPORTED FROM THE UNITED STATES IN ACCORDANCE WITH THE EXPORT ADMINISTRATION REGULATIONS. DIVISION CONTRARY TO U.S. LAW PROHIBITED.

FM DS Rev-D4 Alt26