

4 Way Broadband Combiner SMA Female Input and N-Type Female Output from 2 GHz to 8 GHz rated 300 Watts



FMS0035

Features

- 2 to 8 GHz Frequency
- 300 watt max power
- Insertion Loss: < 0.8 dB
- Phase Balance: ± 6 degrees
- Amplitude Balance: ± 0.3 dB
- Isolation: >7.5 dB
- High Power Handling Capability

Applications

- Communications Systems
- Power Combining
- LTE, Cellular
- Amplifier Systems
- Amplifier Power Combining
- Wireless Infrastructures
- Defense Applications

Description

FMS0035 is a passive 4 way High Power Broadband RF Combiner with 50 ohm SMA and N-Type connectors operating from 2 to 8 GHz, with max power at 300 watts. The FMS0035 has greater than 7.5 dB typical isolation, has less than 0.8 dB typical low insertion loss and a Max VSWR of 1.35:1; along with a phase balance of ± 6 degrees and an amplitude balance of ± 0.32 dB. The RF Combiner operates in a temperature range from -55°C to 85°C.

Electrical Specifications

Design	Reactive
Number of Input Ports	4

Description	Minimum	Typical	Maximum	Units
Frequency Range	2		8	GHz
Impedance		50		Ohms
Input VSWR			1.35:1	
Output VSWR			1.35:1	
Insertion Loss			0.8	dB
Isolation	7.5			dB
Amplitude Balance		± 0.3		dB
Phase Balance		± 6		Degrees
Power Handling (CW)			300	Watts

Mechanical Specifications

Size	
Length	3.08 in [78.23 mm]
Width	2.6 in [66.04 mm]
Height	1.03 in [26.16 mm]
Weight	0.69 lbs [312.98 g]

Configuration

Package Type	Connectorized
Input Connector	SMA Female
Output Connectors	N Female

4 Way Broadband Combiner SMA Female Input and N-Type Female Output from 2 GHz to 8 GHz rated 300 Watts



FMS0035

Environmental Specifications

Temperature

Operating Range

-55 to +85 deg C

Compliance Certifications (see [product page](#) for current document)

Plotted and Other Data

Notes:

Typical Performance Data

4 Way Broadband Combiner SMA Female Input and N-Type Female Output from 2 GHz to 8 GHz rated 300 Watts from Fairview Microwave is in-stock and available to ship same-day. All of our RF/microwave products are available off-the-shelf from our ISO 9001:2008 certified facilities in Lewisville, Texas. Fairview Microwave is RF on-demand.

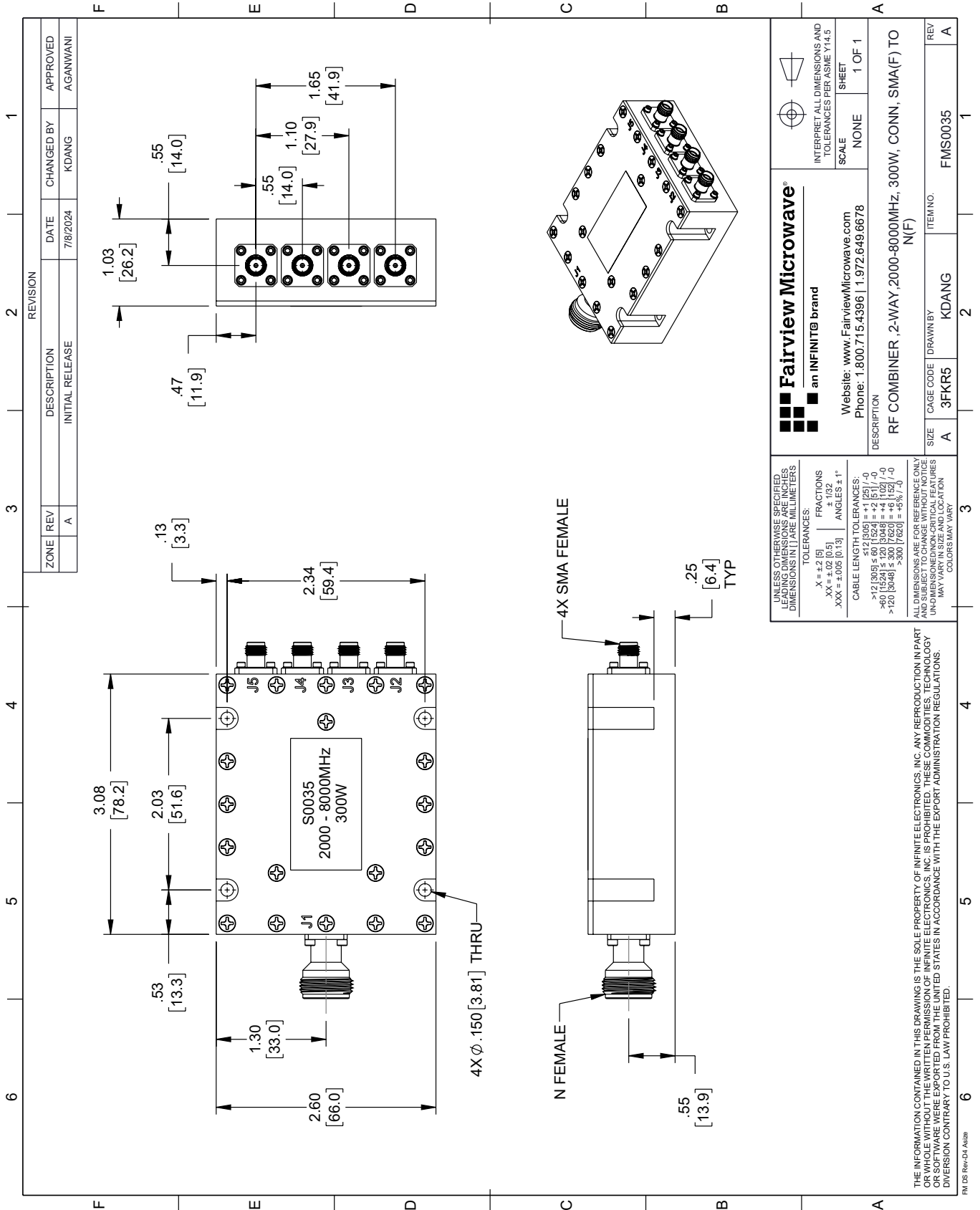
For additional information on this product, please click the following link: [4 Way Broadband Combiner SMA Female Input and N-Type Female Output from 2 GHz to 8 GHz rated 300 Watts FMS0035](#)

URL: <https://www.fairviewmicrowave.com/4-way-power-combiner-sma-broadband-2-ghz-8-ghz-300-watts-fms0035-p.aspx>

The information contained within this document is accurate to the best of our knowledge and representative of the part described herein. It may be necessary to make modifications to the part and/or the documentation of the part in order to implement improvements. Fairview Microwave reserves the right to make such changes as required. Unless otherwise stated, all specifications are nominal. Fairview Microwave does not make any representation or warranty regarding the suitability of the part described herein for any particular purpose, and Fairview Microwave does not assume liability arising out of the use of any part or document.

FMS0035 CAD Drawing

4 Way Broadband Combiner SMA Female Input and N-Type Female Output from 2 GHz to 8 GHz rated 300 Watts



REVISION		DATE	CHANGED BY	APPROVED
ZONE	REV	DESCRIPTION	INITIAL RELEASE	
	A			AGANWANI

Fairview Microwave
an INFINITB brand

Website: www.FairviewMicrowave.com
Phone: 1.800.715.4396 | 1.972.649.6678

INTERPRET ALL DIMENSIONS AND TOLERANCES PER ASME Y14.5

SCALE: NONE SHEET: 1 OF 1

DESCRIPTION: RF COMBINER, 2-WAY, 2000-8000MHz, 300W, CONN, SMA(F) TO N(F)

SIZE: A CAGE CODE: 3FKR5 DRAWN BY: KDANG ITEM NO: FMS0035 REV: A

UNLESS OTHERWISE SPECIFIED, LEADING DIMENSIONS ARE IN INCHES. DIMENSIONS IN [] ARE MILLIMETERS.

TOLERANCES:
 .X = ±.2 (5)
 .XX = ±.02 (0.5)
 .XXX = ±.005 (0.13)

FRACTIONS: ± 1/32
 ANGLES: ± 1°

CABLE LENGTH TOLERANCES:
 <12 (305) ±.60 (15.24) = ±.2 (5) / -0
 >12 (305) ≤ 60 (1524) = ±.2 (5) / -0
 >60 (1524) ≤ 120 (3048) = ±.4 (10.2) / -0
 >120 (3048) ≤ 300 (7620) = ±.8 (20.3) / -0

ALL DIMENSIONS ARE FOR REFERENCE ONLY. UNDIMENSIONED NON-CRITICAL FEATURES MAY VARY IN SIZE AND LOCATION. COLORS MAY VARY.

THE INFORMATION CONTAINED IN THIS DRAWING IS THE SOLE PROPERTY OF INFINITE ELECTRONICS, INC. ANY REPRODUCTION IN PART OR WHOLE WITHOUT THE WRITTEN PERMISSION OF INFINITE ELECTRONICS, INC. IS PROHIBITED. THESE COMMODITIES, TECHNOLOGY OR SOFTWARE WERE EXPORTED FROM THE UNITED STATES IN ACCORDANCE WITH THE EXPORT ADMINISTRATION REGULATIONS. DIVERSION CONTRARY TO U.S. LAW PROHIBITED.

PM DS Rev-D4 Alt2b