

SPDT, Electromechanical Relay Latching Switch, DC to 43 GHz, 28VDC, 5W, Diodes, Self Cut-Off, Solder Terminals, 2.92mm

The FMSW7283 is a Single Pole Double Throw (SPDT) electromechanical relay switch that operates across an ultra wide frequency range from DC to 43 GHz and can handle up to 5W of Average Power in a break before make condition. The 50 Ohm design has a Latching Actuator with Self Cut-Off that magnetically latches in place after the control voltage is removed. For power sensitive applications, this is the best actuator option. The design also incorporates Suppression Diodes which limit voltage spikes or reverse current. Impressive typical performance includes 0.4 dB insertion loss and isolation greater than 85 dB. This switch requires +28Vdc bias voltage, operates over a temperature range of -25°C to +65°C, and is rated for 2 million lifecycles. The rugged and compact package assembly supports 2.92mm female connectors and solder terminal pins for DC control. And for highly reliable operation, the model is guaranteed to meet MIL-STD-202 environmental test conditions for shock and random vibration.

Electrical Specifications (TA = +25°C, DC Voltage = 28 Vdc)

Switch Type	SPDT
Actuator Type	Latching
Actuator Options	Diodes, Self Cut Off

Description	Min	Typ	Max	Units
Frequency Range	DC		43	GHz
Operating Voltage	26	28	30	Volts
Actuating Current @ 28 Volts			65	mA
VSWR		1.4:1	1.9:1	
Insertion Loss		0.4	1.2	dB
Isolation	40	85		dB
Input Power			5	Watts
Switching Time			20	ms

Performance by Frequency

Description	F1	F2	F3	F4	F5	Units
Frequency Range	DC - 6	6 - 12.4	12.4 - 18	18 - 26.5	26.5 - 40	GHz
VSWR, Max	1.15:1	1.35:1	1.4:1	1.45:1	1.5:1	
Insertion Loss, Max	0.2	0.3	0.4	0.5	0.7	dB
Isolation, Min	85	80	80	75	60	dB

Performance by Frequency

Description	F6	F7	F8	F9	F10	Units
Frequency Range	40 - 43					GHz
VSWR, Max	1.9:1					
Insertion Loss, Max	1.2					dB
Isolation, Min	40					dB



Features:

- SPDT Electromechanical Relay Switch
- DC to 43 GHz Frequency Range
- Latching Actuator with Self Cut-Off
- Suppression Diodes
- 2M Lifecycle Rating
- Insertion Loss 0.4 dB typ
- Isolation > 85 dB typ
- VSWR as low as 1.15:1 max
- 2.92mm Female Connectors
- +28 Volt DC Bias
- Solder Terminal Pins for DC Control
- -25°C to +65°C Operating Temperature
- Up to 5 Watt Average Power Handling
- 50 Ohm Design
- Hot Switching Capability - Consult Factory
- S-Parameter Data available upon request
- Rugged Design meets Mil-STD-202 Test Conditions

Applications:

- Aerospace & Defense
- Test & Measurement
- Microwave Radio Systems
- Military & Commercial Communication Systems
- Research & Development
- SATCOM
- Wireless Communications
- Enterprise
- IoT

Fairview Microwave
 301 Leora Ln., Suite 100
 Lewisville, TX 75056
 Tel: 1-800-715-4396 / (972) 649-6678
 Fax: (972) 649-6689
www.fairviewmicrowave.com
sales@fairviewmicrowave.com

Mechanical Specifications

Size

Length	2.2 in [55.88 mm]
Width/Diameter	1.5 in [38.1 mm]
Height	0.52 in [13.21 mm]
Weight	0.1 lbs [45.36 g]
Body Material and Plating	Electroless Nickel

Connectors

RF Connector Type	2.92mm Female
Control Connector	Solder Terminals

Environmental Specifications

Temperature

Operating Range	-25 to +65 deg C
Storage Range	-55 to +100 deg C

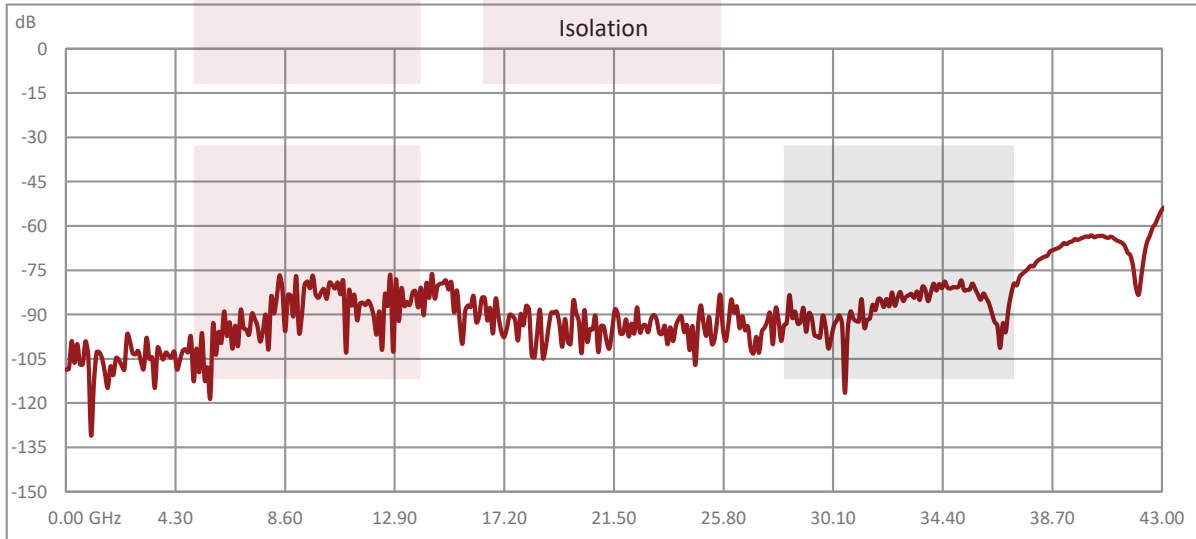
Shock	MIL-STD-202 Method 213, Condition D, 500G (non operational)
Vibration	MIL-STD-202 Method 204, Condition D, 10G RMS (non operational)

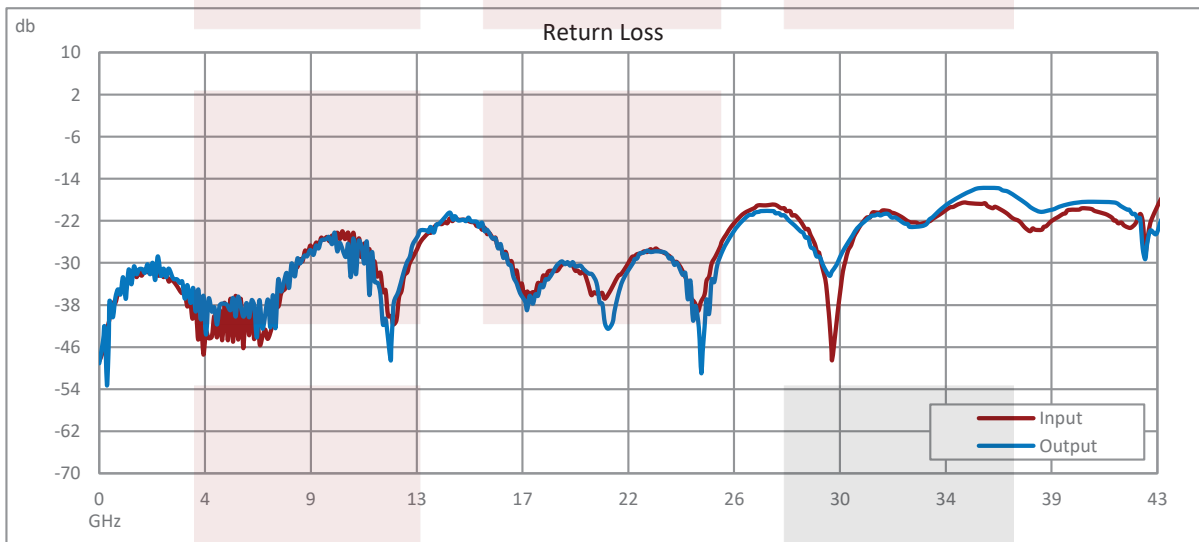
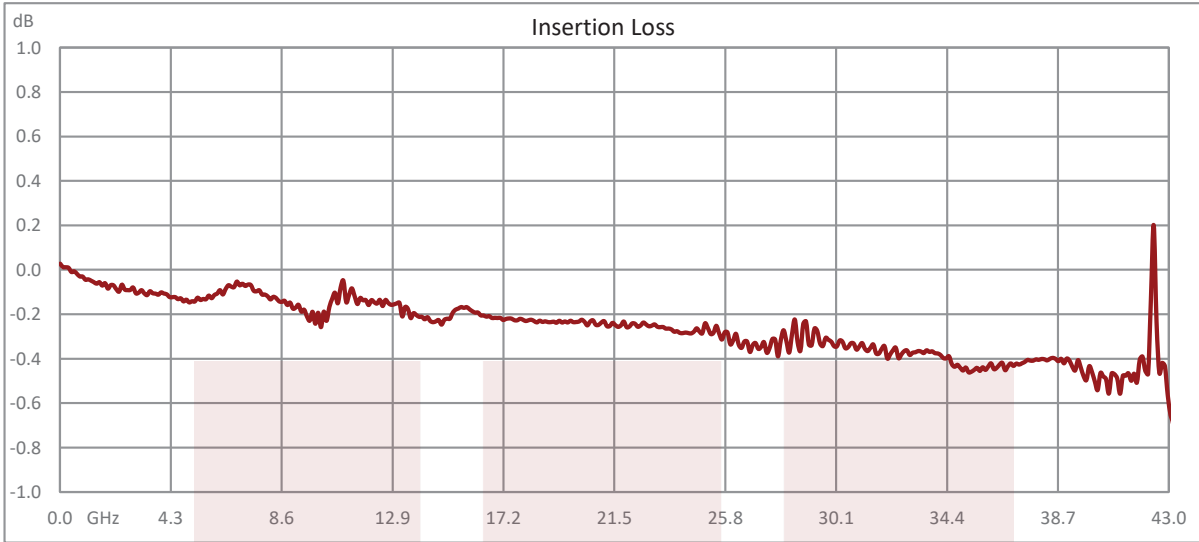
Compliance Certifications (see [product page](#) for current document)

Plotted and Other Data

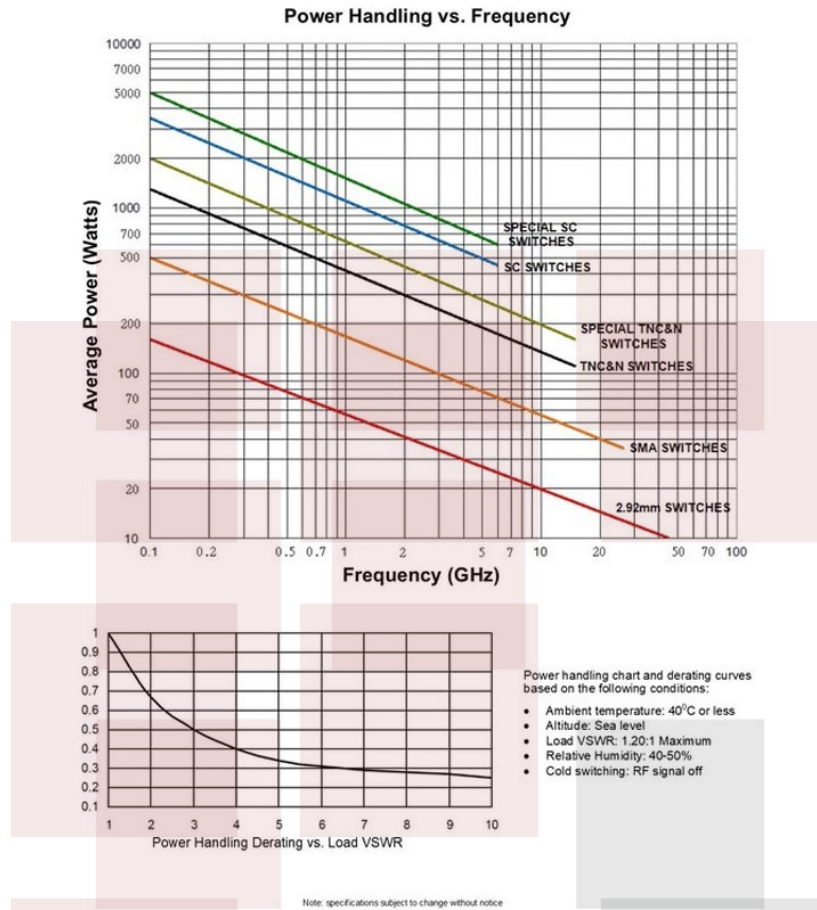
Notes:

Typical Performance Data





Power Handling vs. Frequency

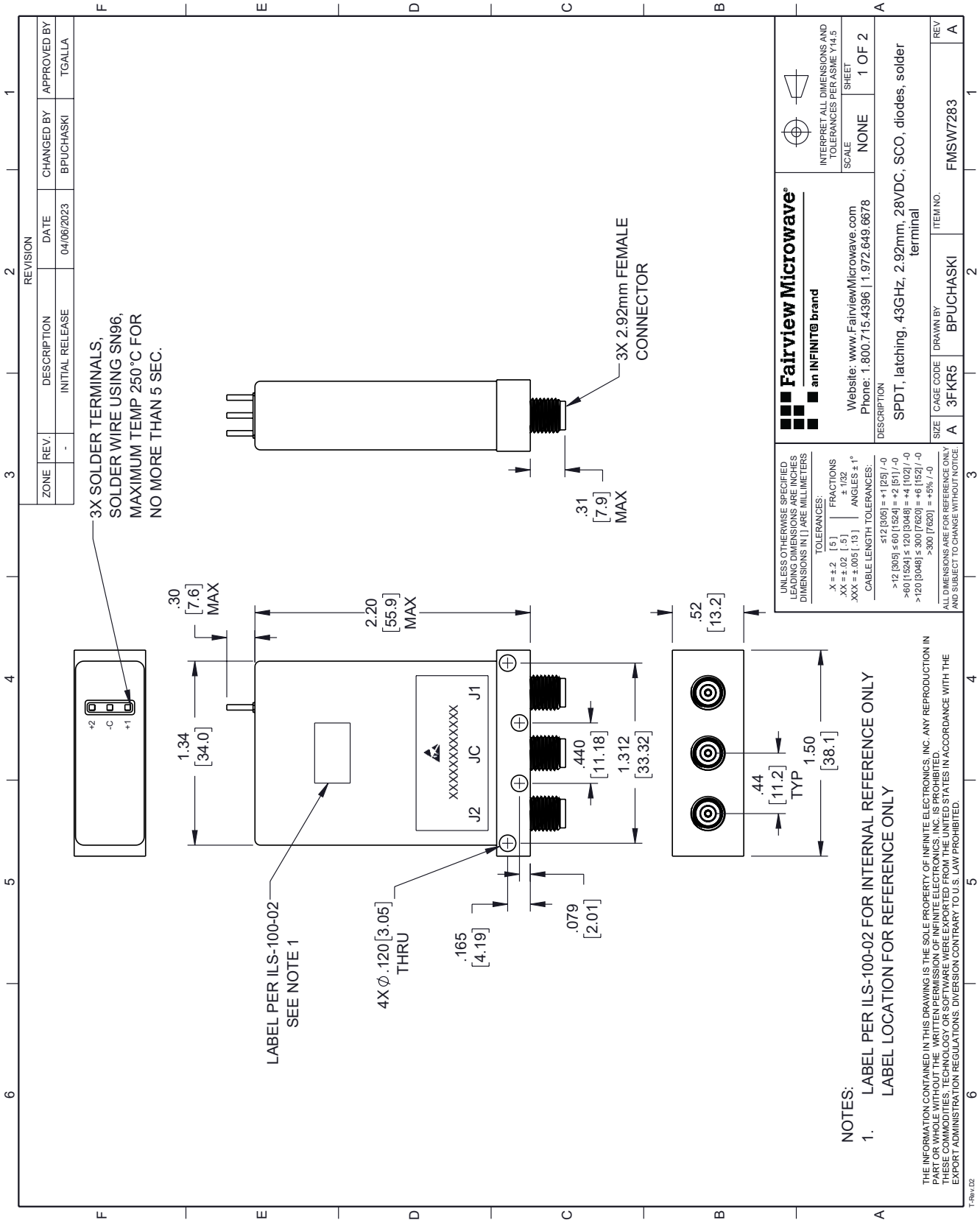


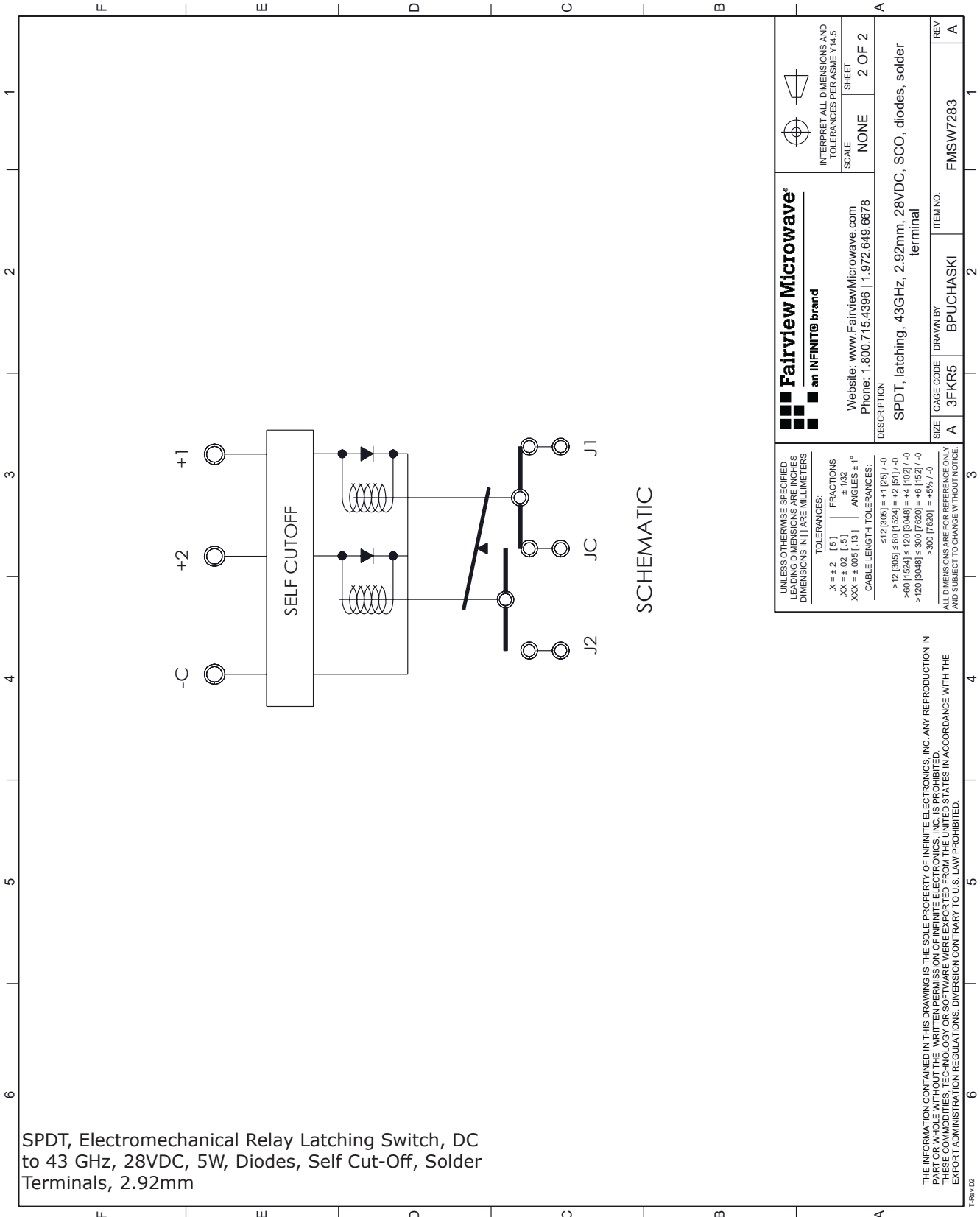
SPDT, Electromechanical Relay Latching Switch, DC to 43 GHz, 28VDC, 5W, Diodes, Self Cut-Off, Solder Terminals, 2.92mm from Fairview Microwave is in-stock and available to ship same-day. All of our RF/microwave products are available off-the-shelf from our ISO 9001:2008 certified facilities in Lewisville, Texas. Fairview Microwave is RF on-demand.

For additional information on this product, please click the following link: [SPDT, Electromechanical Relay Latching Switch, DC to 43 GHz, 28VDC, 5W, Diodes, Self Cut-Off, Solder Terminals, 2.92mm FMSW7283](https://www.fairviewmicrowave.com/spdt-latching-43-ghz-electro-mechanical-relay-switch-diodes-self-cut-off-28v-2.92mm-fmsw7283)

URL: <https://www.fairviewmicrowave.com/spdt-latching-43-ghz-electro-mechanical-relay-switch-diodes-self-cut-off-28v-2.92mm-fmsw7283-p.aspx>

The information contained in this document is accurate to the best of our knowledge and representative of the part described herein. It may be necessary to make modifications to the part and/or the documentation of the part, in order to implement improvements. Fairview Microwave reserves the right to make such changes as required. Unless otherwise stated, all specifications are nominal. Fairview Microwave does not make any representation or warranty regarding the suitability of the part described herein for any particular purpose, and Fairview Microwave does not assume any liability arising out of the use of any part or documentation.





SPDT, Electromechanical Relay Latching Switch, DC to 43 GHz, 28VDC, 5W, Diodes, Self Cut-Off, Solder Terminals, 2.92mm

<p>Fairview Microwave an INFINIT[®] brand</p> <p>Website: www.FairviewMicrowave.com Phone: 1.800.715.4396 1.972.649.6678</p>	<p>INTERPRET ALL DIMENSIONS AND TOLERANCES PER ASME Y14.5</p>	<p>SCALE: NONE</p>	<p>SHEET: 2 OF 2</p>
	<p>DESCRIPTION: SPDT, latching, 43GHz, 2.92mm, 28VDC, SCO, diodes, solder terminal</p>		
<p>UNLESS OTHERWISE SPECIFIED, DIMENSIONS ARE IN MILLIMETERS UNLESS OTHERWISE NOTED.</p>	<p>TOLERANCES:</p> <p>.X = ±.2 (.5) FRACTIONS .XX = ±.02 (.5) ±.152 .XXX = ±.005 (.13) ANGLES ± 1°</p>	<p>CABLE LENGTH TOLERANCES:</p> <p>≤ 12 (305) = ±1 (25) / -0 > 12 (305) ≤ 60 (1524) = +2 (51) / -0 > 60 (1524) ≤ 120 (3048) = +4 (102) / -0 > 120 (3048) ≤ 300 (7620) = +6 (152) / -0 > 300 (7620) = +5% / -0</p>	<p>REV: A</p>
<p>THE INFORMATION CONTAINED IN THIS DRAWING IS THE SOLE PROPERTY OF INFINITE ELECTRONICS, INC. ANY REPRODUCTION IN WHOLE OR IN PART WITHOUT THE WRITTEN PERMISSION OF INFINITE ELECTRONICS, INC. IS PROHIBITED.</p> <p>THESE COMMODITIES, TECHNOLOGY OR SOFTWARE WERE EXPORTED FROM THE UNITED STATES IN ACCORDANCE WITH THE EXPORT ADMINISTRATION REGULATIONS. DIVERSION CONTRARY TO U.S. LAW PROHIBITED.</p>	<p>ITEM NO.: FMSW7283</p>	<p>SIZE: A</p>	<p>REV: A</p>
<p>3D KIR5</p>	<p>BPUCHASKI</p>	<p>3FKR5</p>	<p>2</p>