

Transfer, Electromechanical Relay Failsafe Switch, DC to 43 GHz, 28VDC, 10W, Indicators, TTL, Diodes, Solder Terminals, 2.92mm

The FMSW7296 is a Transfer electromechanical relay switch that operates across an ultra wide frequency range from DC to 43 GHz and can handle up to 10 Watts of Average Power in a break before make condition. The 50 Ohm design is rated for 2 million lifecycles and features a Failsafe Actuator. Additional features include TTL logic control, Indicators to monitor the switch position, and Suppression Diodes which limit voltage spikes or reverse current. Impressive typical performance includes 0.6 dB insertion loss and isolation greater than 80 dB. This switch requires +28 Vdc bias voltage and operates over a temperature range of -25°C to +65°C. The rugged and compact package assembly supports 2.92mm female connectors and solder terminal pins for DC control. And for highly reliable operation, the model is guaranteed to meet MIL-STD-202 environmental test conditions for shock and random vibration.

Electrical Specifications (TA = +25°C, DC Voltage = 28 Vdc)

Switch Type	Transfer
Actuator Type	Failsafe
Actuator Options	Indicators, TTL Logic, Diodes
TTL Control	on: 2.4 to 5 Volts off: 0 to 0.8 Volts

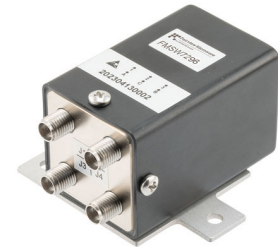
Description	Min	Typ	Max	Units
Frequency Range	DC		43	GHz
Operating Voltage	26	28	30	Volts
Actuating Current @ 28 Volts			160	mA
VSWR		1.4:1	2:1	
Insertion Loss		0.6	1.3	dB
Isolation	50	85		dB
Input Power			10	Watts
Switching Time			20	ms

Performance by Frequency

Description	F1	F2	F3	F4	F5	Units
Frequency Range	DC - 6	6 - 12.4	12.4 - 26.5	26.5 - 40	40 - 43	GHz
VSWR, Max	1.2:1	1.3:1	1.4:1	1.8:1	2:1	
Insertion Loss, Max	0.2	0.4	0.7	1	1.3	dB
Isolation, Min	80	75	65	50	50	dB

Mechanical Specifications

Size	
Length	2 in [50.8 mm]
Width/Diameter	2.16 in [54.86 mm]
Height	1.26 in [32 mm]
Weight	0.26 lbs [117.93 g]
Body Material and Plating	Electroless Nickel



Features:

- Transfer Electromechanical Relay Switch
- DC to 43 GHz Frequency Range
- Failsafe Actuator
- 2M Lifecycle Rating
- TTL Control Logic
- Indicators
- Suppression Diodes
- Insertion Loss 0.6 dB typ
- Isolation > 80 dB typ
- VSWR as low as 1.2:1 max
- Solder Terminal Pins for DC Control
- +28 Volt DC Bias
- 2.92mm Female Connectors
- -25°C to +65°C Operating Temperature
- Up to 10 Watt Average Power Handling
- 50 Ohm Design
- Hot Switching Capability - Consult Factory
- S-Parameter Data available upon request
- Rugged Design meets Mil-STD-202 Test Conditions

Applications:

- Aerospace & Defense
- Test & Measurement
- Microwave Radio Systems
- Military & Commercial Communication Systems
- Research & Development
- SATCOM
- Wireless Communications
- Enterprise
- IoT

Fairview Microwave
 301 Leora Ln., Suite 100
 Lewisville, TX 75056
 Tel: 1-800-715-4396 / (972) 649-6678
 Fax: (972) 649-6689
www.fairviewmicrowave.com
sales@fairviewmicrowave.com

Connectors

RF Connector Type 2.92mm Female
Control Connector Solder Terminals

Environmental Specifications

Temperature

Operating Range -25 to +65 deg C
Storage Range -55 to +100 deg C

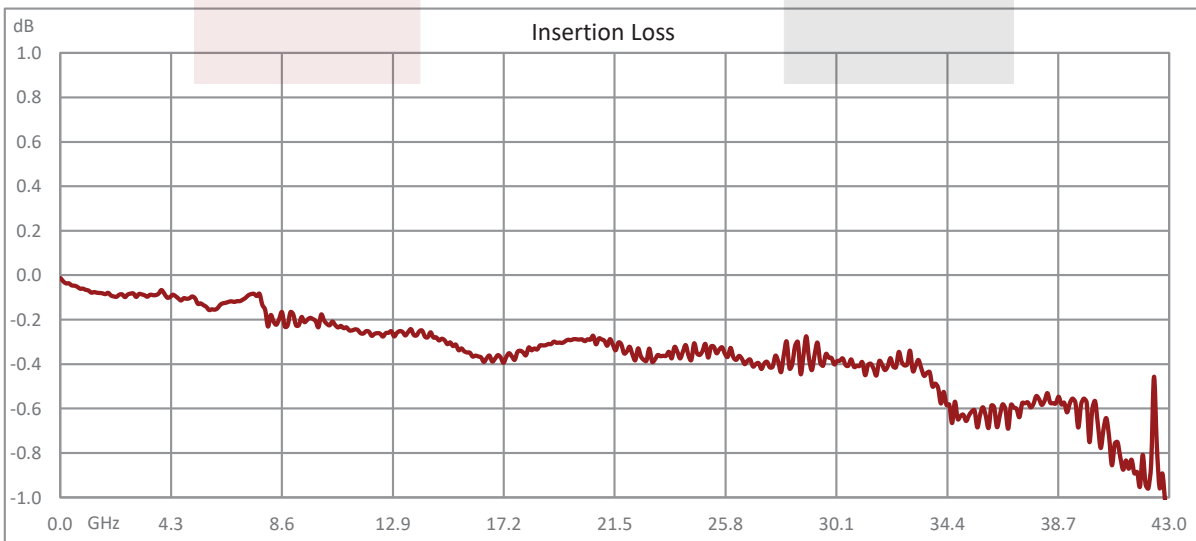
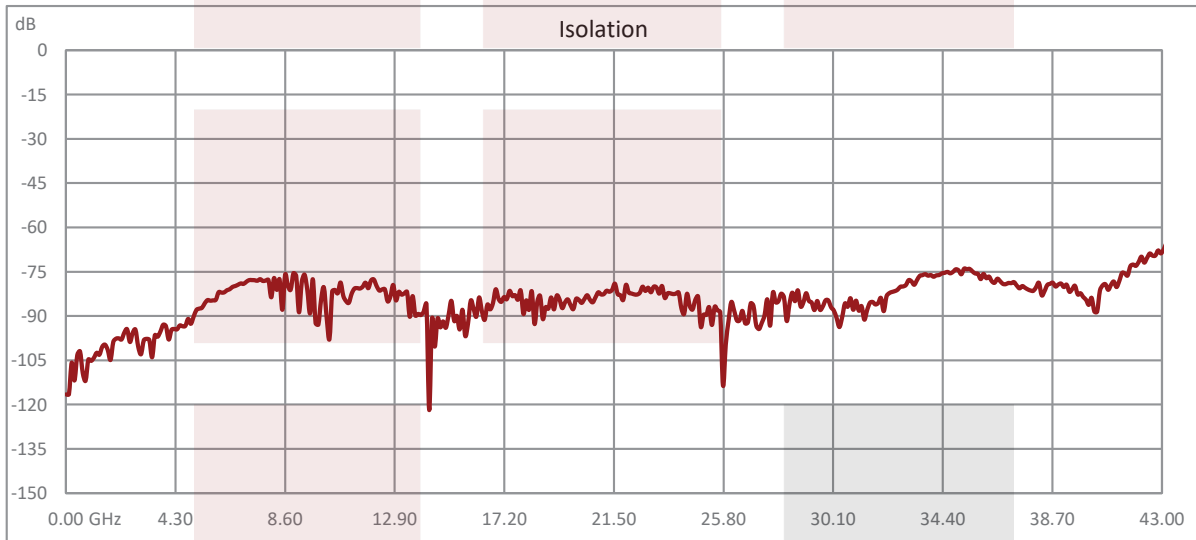
Shock MIL-STD-202 Method 213, Condition D, 500G (non operational)
Vibration MIL-STD-202 Method 204, Condition D, 10G RMS (non operational)

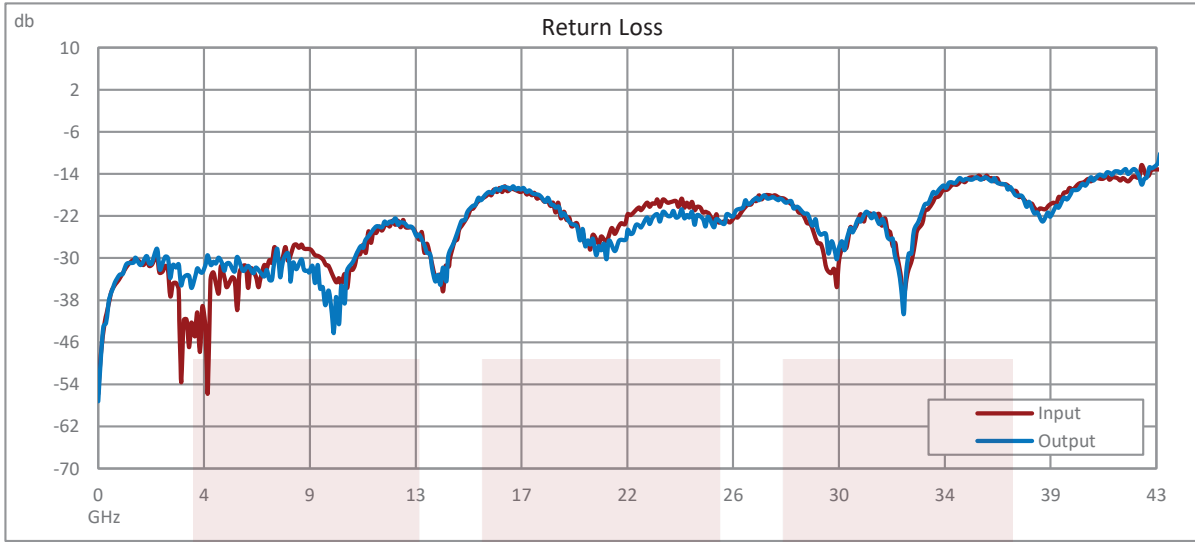
Compliance Certifications (see [product page](#) for current document)

Plotted and Other Data

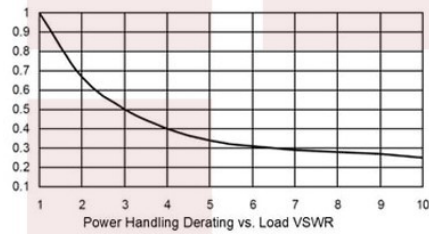
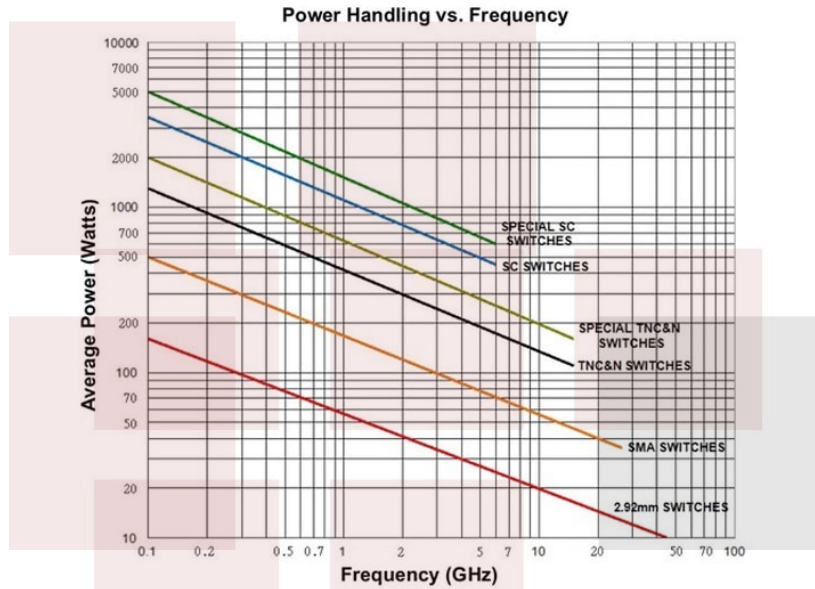
Notes:

Typical Performance Data





Power Handling vs. Frequency



Power handling chart and derating curves based on the following conditions:

- Ambient temperature: 40°C or less
- Altitude: Sea level
- Load VSWR: 1.20:1 Maximum
- Relative Humidity: 40-50%
- Cold switching: RF signal off

Note: specifications subject to change without notice

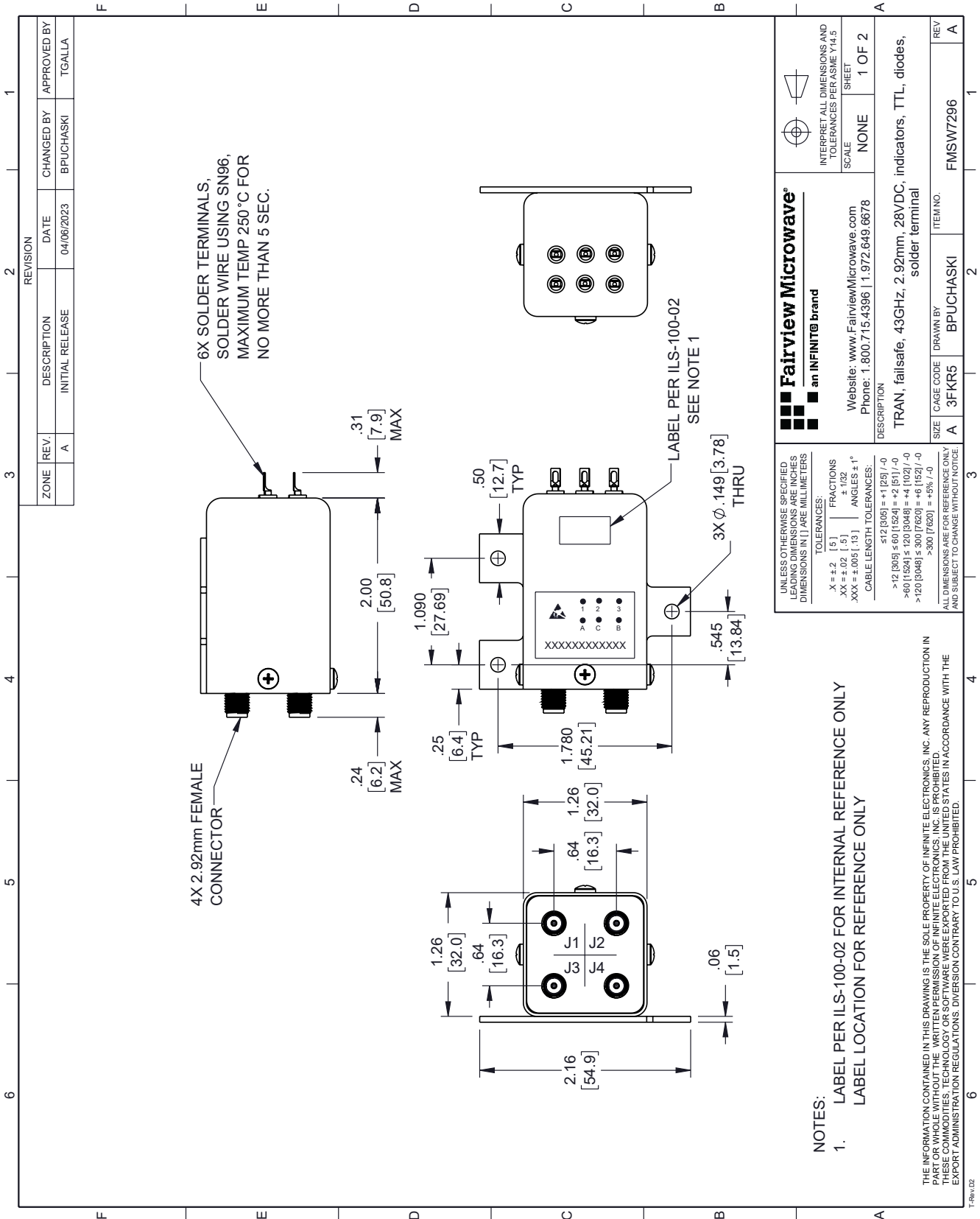
Transfer, Electromechanical Relay Failsafe Switch, DC to 43 GHz, 28VDC, 10W, Indicators, TTL, Diodes, Solder Terminals, 2.92mm from Fairview Microwave is in-stock and available to ship same-day. All of our RF/microwave products are available off-the-shelf from our ISO 9001:2008 certified facilities in Lewisville, Texas. Fairview Microwave is RF on-demand.

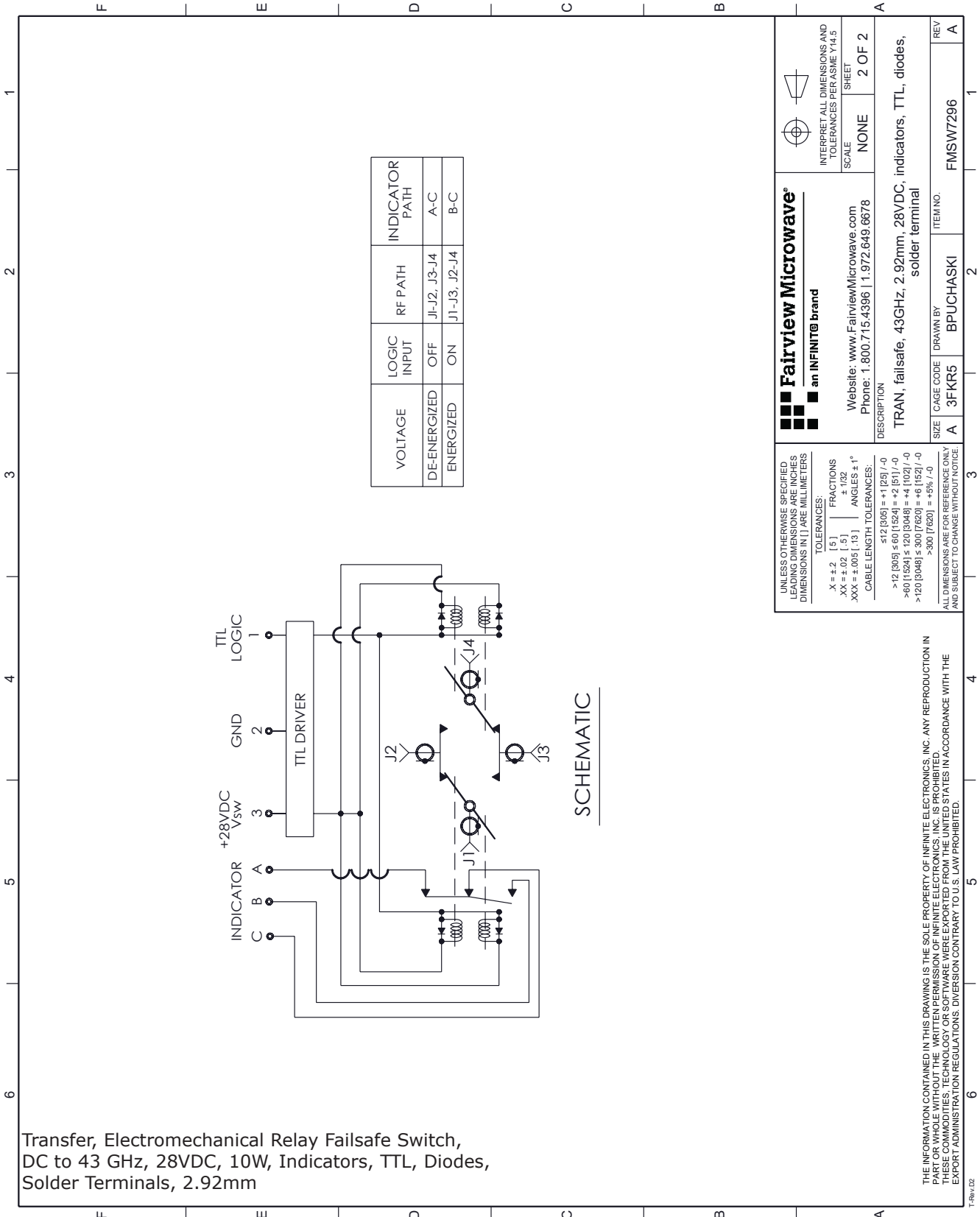
For additional information on this product, please click the following link: [Transfer, Electromechanical Relay Failsafe Switch, DC to 43 GHz, 28VDC, 10W, Indicators, TTL, Diodes, Solder Terminals, 2.92mm FMSW7296](#)

URL: <https://www.fairviewmicrowave.com/transfer-failsafe-43-ghz-electro-mechanical-relay-switch-indicators-ttl-diodes-28v-2.92mm-fmsw7296-p.aspx>

The information contained in this document is accurate to the best of our knowledge and representative of the part described herein. It may be necessary to make modifications to the part and/or the documentation of the part, in order to implement improvements. Fairview Microwave reserves the right to make such changes as required. Unless otherwise stated, all specifications are nominal. Fairview Microwave does not make any representation or warranty regarding the suitability of the part described herein for any particular purpose, and Fairview Microwave does not assume any liability arising out of the use of any part or documentation.







Transfer, Electromechanical Relay Failsafe Switch,
DC to 43 GHz, 28VDC, 10W, Indicators, TTL, Diodes,
Solder Terminals, 2.92mm

VOLTAGE	LOGIC INPUT	RF PATH	INDICATOR PATH
DE-ENERGIZED	OFF	J1-J2, J3-J4	A-C
ENERGIZED	ON	J1-J3, J2-J4	B-C

<p>Fairview Microwave[®] an INFINIT[®] brand</p> <p>Website: www.FairviewMicrowave.com Phone: 1.800.715.4396 1.972.649.6678</p>	<p>INTERPRET ALL DIMENSIONS AND TOLERANCES PER ASME Y14.5</p>
	<p>SCALE: NONE</p> <p>SHEET: 2 OF 2</p>
<p>DESCRIPTION</p> <p>TRAN, failsafe, 43GHz, 2.92mm, 28VDC, indicators, TTL, diodes, solder terminal</p>	
<p>UNLESS OTHERWISE SPECIFIED, DIMENSIONS ARE IN MILLIMETERS</p> <p>TOLERANCES:</p> <p>.X = ±.2 [.5] FRACTIONS .XX = ±.02 [.5] ANGLES ± 1° .XXX = ±.005 [.13]</p> <p>CABLE LENGTH TOLERANCES:</p> <p>≤12 [305] = ±1 [25] / -0 >12 [305] ≤ 60 [1524] = +2 [51] / -0 >60 [1524] ≤ 120 [3048] = +4 [102] / -0 >120 [3048] ≤ 300 [7620] = +6 [152] / -0 >300 [7620] = +5% / -0</p> <p>ALL DIMENSIONS ARE FOR REFERENCE ONLY AND SUBJECT TO CHANGE WITHOUT NOTICE.</p>	<p>SIZE CAGE CODE DRAWN BY ITEM NO. REV</p> <p>A 3FKR5 BPUCHASKI FMSW7296 A</p>

THE INFORMATION CONTAINED IN THIS DRAWING IS THE SOLE PROPERTY OF INFINITE ELECTRONICS, INC. ANY REPRODUCTION IN WHOLE OR IN PART WITHOUT THE WRITTEN PERMISSION OF INFINITE ELECTRONICS, INC. IS PROHIBITED. THESE COMMODITY TECHNOLOGY OR SOFTWARE WERE EXPORTED FROM THE UNITED STATES IN ACCORDANCE WITH THE EXPORT ADMINISTRATION REGULATIONS. DIVERSION CONTRARY TO U.S. LAW PROHIBITED.