

SMA Male (Plug) Termination (Load) 5 Watts to 26.5 GHz,
Black Anodized Aluminum Body, 1.30:1 VSWR



FMTR1164

Features

- DC to 26.5 GHz Frequency Range
- VSWR <1.30:1
- Max Power 5 Watt (CW)
- SMA Male Coaxial Interface

Applications

- Wireless
- SatCom
- Radar Systems
- Test and Measurement
- Commercial and Military Communications

Description

Fairview Microwave's FMTR1164 is an RF termination (also called RF load or dummy load) that operates from DC to 26.5 GHz and handles up to 5 Watt (CW). Our SMA termination / load has a male gender. FMTR1164 SMA load termination offers 1.30:1 max VSWR.

RF load / terminations are indispensable components in many RF, microwave and millimeter wave systems where signal reflection from unused ports can potentially damage the device or reduce the signal integrity. By using a terminator on an unused port with a matched load (dummy load), the incident energy will be absorbed with minimal reflection. These termination components are commonly used to terminate devices such as couplers, circulators, and switches. They are also widely used in measurement systems to ensure accurate results. Fairview Microwave offers a huge selection of RF, microwave and millimeter wave terminations up to 65 GHz with excellent performance over the entire operating range and power handling capabilities up to 800 Watt (CW).

Electrical Specifications

Description	Minimum	Typical	Maximum	Units
Frequency Range	DC		26.5	GHz
Impedance		50		Ohms
VSWR, Input			1.3:1	
Input Power (CW)			5	Watts
Derated linearly to 0.5W @ 125°C				
Input Power (Peak)			500	Watts
5µs pulse, 1% duty cycle				

Mechanical Specifications

Size

Length	1.031 in [26.19 mm]
Width	0.618 in [15.7 mm]
Height	0.618 in [15.7 mm]
Weight	0.0221 lbs [10.02 g]
Package Type	Connectorized

Configuration

Connector	SMA Male
Connector Specification	

SMA Male (Plug) Termination (Load) 5 Watts to 26.5 GHz,
Black Anodized Aluminum Body, 1.30:1 VSWR



FMTR1164

Material Specifications

Description	Material	Plating
Connector 1 Contact	Brass	Gold
Body	Brass	Nickel
Housing	Black Anodized Aluminum	

Environmental Specifications

Temperature

Operating Range -55 to +125 deg C

Compliance Certifications (see [product page](#) for current document)

Plotted and Other Data

Notes:

SMA Male (Plug) Termination (Load) 5 Watts to 26.5 GHz, Black Anodized Aluminum Body, 1.30:1 VSWR from Fairview Microwave is in-stock and available to ship same-day. All of our RF/microwave products are available off-the-shelf from our ISO 9001:2008 certified facilities in Lewisville, Texas. Fairview Microwave is RF on-demand.

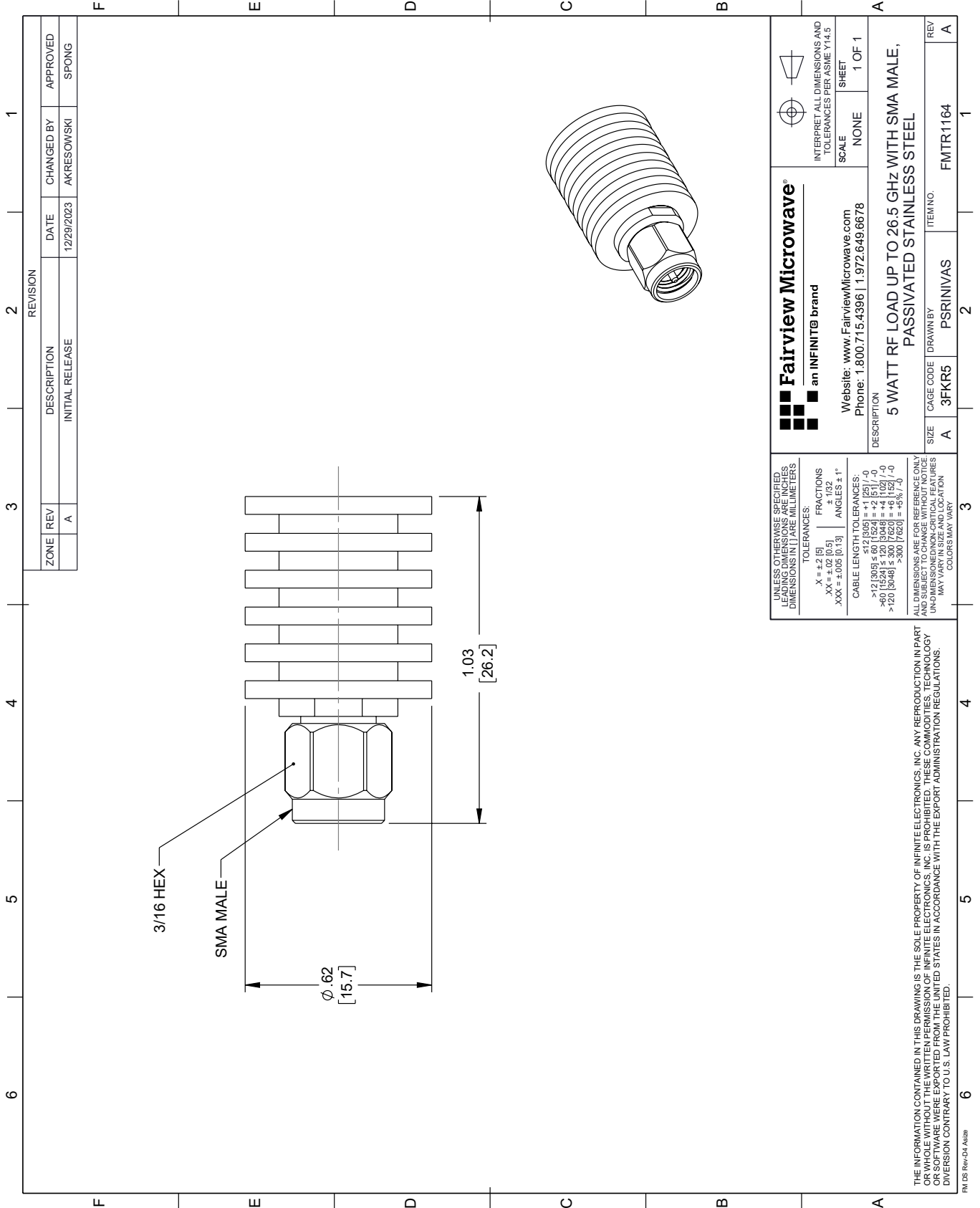
For additional information on this product, please click the following link: [SMA Male \(Plug\) Termination \(Load\) 5 Watts to 26.5 GHz, Black Anodized Aluminum Body, 1.30:1 VSWR FMTR1164](#)

URL: <https://www.fairviewmicrowave.com/rf-load-5-watts-26.5-ghz-sma-male-fmtr1164-p.aspx>

The information contained within this document is accurate to the best of our knowledge and representative of the part described herein. It may be necessary to make modifications to the part and/or the documentation of the part in order to implement improvements. Fairview Microwave reserves the right to make such changes as required. Unless otherwise stated, all specifications are nominal. Fairview Microwave does not make any representation or warranty regarding the suitability of the part described herein for any particular purpose, and Fairview Microwave does not assume liability arising out of the use of any part or document.

FMTR1164 CAD Drawing

SMA Male (Plug) Termination (Load) 5 Watts to 26.5 GHz, Black Anodized Aluminum Body, 1.30:1 VSWR



REVISION		DATE	CHANGED BY	APPROVED
ZONE	REV			
	A	12/29/2023	AKRESOWSKI	SPONG
DESCRIPTION		INITIAL RELEASE		

Fairview Microwave®
an INFINIT® brand

Website: www.FairviewMicrowave.com
Phone: 1.800.715.4396 | 1.972.649.6678

UNLESS OTHERWISE SPECIFIED, LEADING DIMENSIONS ARE IN INCHES. DIMENSIONS IN [] ARE MILLIMETERS.

TOLERANCES:
 .X = ±.2 [5] FRACTIONS ± 1/32
 .XX = ±.02 [0.5] ANGLES ± 1°
 .XXX = ±.005 [0.13]

CABLE LENGTH TOLERANCES:
 >12 [305] ≤ 60 [1524] = ±.1 [25] / -0
 >60 [1524] ≤ 120 [3048] = ±.4 [102] / -0
 >120 [3048] ≤ 300 [7620] = ±.6 [15] / -0

ALL DIMENSIONS ARE FOR REFERENCE ONLY. UNLESS OTHERWISE SPECIFIED, ALL DIMENSIONS ARE NON-CRITICAL FEATURES. MAY VARY IN SIZE AND LOCATION. COLORS MAY VARY.

INTERPRET ALL DIMENSIONS AND TOLERANCES PER ASME Y14.5

SCALE: NONE SHEET: 1 OF 1

DESCRIPTION: 5 WATT RF LOAD UP TO 26.5 GHz WITH SMA MALE, PASSIVATED STAINLESS STEEL

SIZE: A CAGE CODE: 3FKR5 DRAWN BY: PSRINIVAS ITEM NO.: FMTR1164

THE INFORMATION CONTAINED IN THIS DRAWING IS THE SOLE PROPERTY OF INFINITE ELECTRONICS, INC. ANY REPRODUCTION IN PART OR WHOLE WITHOUT THE WRITTEN PERMISSION OF INFINITE ELECTRONICS, INC. IS PROHIBITED. THESE COMMODITIES, TECHNOLOGY OR SOFTWARE WERE EXPORTED FROM THE UNITED STATES IN ACCORDANCE WITH THE EXPORT ADMINISTRATION REGULATIONS. DIVERSION CONTRARY TO U.S. LAW PROHIBITED.

FM DS Rev-D4 Alt2b