

## WR-137 Waveguide Termination 500 Watts with a 5.38 GHz to 8.17 GHz Frequency Range, Aluminum with CPR-137F Flange

The FMW137TR1001 is a WR-137 waveguide termination/load that operates in the frequency range of 5.38 GHz to 8.17 GHz. This WR-137 waveguide termination has a Max VSWR of 1.25:1. This waveguide termination design is made of painted aluminum and incorporates a CPR-137F flange. In addition to waveguide termination product line, Fairview Microwave also offers a wide range of waveguide products which are available in stock and ready for same-day shipment.

### Electrical Specifications

Description	Min	Typ	Max	Units
Frequency Range	5.38		8.17	GHz
VSWR			1.25:1	
Input Power (CW)			500	Watts

### Mechanical Specifications

Size	
Length	13.78 in [350.01 mm]
Width/Dia.	4.13 in [104.9 mm]
Height	4.21 in [106.93 mm]
Weight	3.4 lbs [1.54 kg]

Description	Flange	Waveguide
Designation		WR-137
Type	CPR-137F	
Material	Aluminum	Aluminum
Plating	Chromate	Chromate
Finish		Grey paint

### Environmental Specifications

Temperature	
Operating Range	-40 to +70 deg C

**Compliance Certifications** (see [product page](#) for current document)

### Plotted and Other Data

Notes:



### Features:

- WR-137 Waveguide
- Operating Frequency Range from 5.38 GHz to 8.17 GHz
- CPR-137F Flange
- 1.25:1 Max VSWR
- 500 Watts Average Power Handling

### Applications:

- Radar Systems
- Military and Space
- Wireless Radio Systems
- Telecom Infrastructure
- Communication Systems
- R&D Labs
- Microwave Radio Systems

Fairview Microwave  
 301 Leora Ln., Suite 100  
 Lewisville, TX 75056  
 Tel: 1-800-715-4396 / (972) 649-6678  
 Fax: (972) 649-6689  
[www.fairviewmicrowave.com](http://www.fairviewmicrowave.com)  
[sales@fairviewmicrowave.com](mailto:sales@fairviewmicrowave.com)

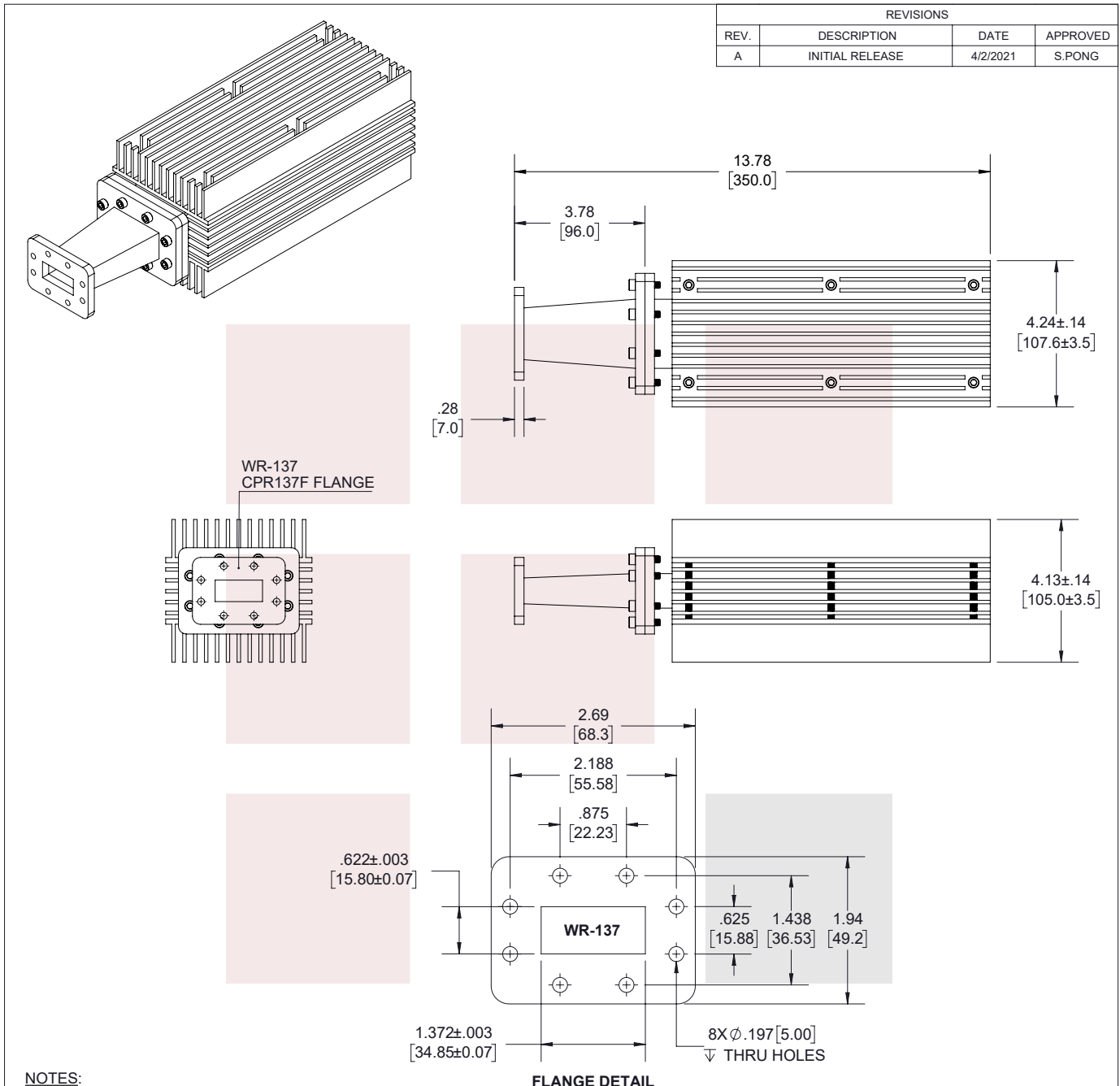
WR-137 Waveguide Termination 500 Watts with a 5.38 GHz to 8.17 GHz Frequency Range, Aluminum with CPR-137F Flange from Fairview Microwave is in-stock and available to ship same-day. All of our RF/microwave products are available off-the-shelf from our ISO 9001:2008 certified facilities in Lewisville, Texas. Fairview Microwave is RF on-demand.

For additional information on this product, please click the following link: [WR-137 Waveguide Termination 500 Watts with a 5.38 GHz to 8.17 GHz Frequency Range, Aluminum with CPR-137F Flange FMW137TR1001](#)

URL: <https://www.fairviewmicrowave.com/wr-137-waveguide-termination-500-watts-instrumentation-grade-5.38-8.17-ghz-fmw137tr1001-p.aspx>

The information contained in this document is accurate to the best of our knowledge and representative of the part described herein. It may be necessary to make modifications to the part and/or the documentation of the part, in order to implement improvements. Fairview Microwave reserves the right to make such changes as required. Unless otherwise stated, all specifications are nominal. Fairview Microwave does not make any representation or warranty regarding the suitability of the part described herein for any particular purpose, and Fairview Microwave does not assume any liability arising out of the use of any part or documentation.





**TITLE**

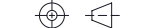
WR-137 Waveguide Termination 500 Watts with a 5.38 GHz to 8.17 GHz Frequency Range, Aluminum with CPR-137F Flange

UNLESS OTHERWISE SPECIFIED LEADING DIMENSIONS ARE INCHES DIMENSIONS IN [ ] ARE MILLIMETERS

**TOLERANCES:**      **CABLE LENGTH (L) TOLERANCES:**

X = ±.2 [5.08]	FRACTIONS	L ≤ 12 [305] = +1 [25] / -0
.XX = ±.02 [.51]	± 1/32	12 [305] < L ≤ 60 [1524] = +2 [51] / -0
.XXX = ±.005 [.13]	ANGLES ± 1°	60 [1524] < L ≤ 120 [3048] = +4 [102] / -0
		120 [3048] < L ≤ 300 [7620] = +6 [152] / -0
		300 [7620] < L = +5%L / -0

**THIRD-ANGLE PROJECTION**



THE INFORMATION AND DESIGN IN THIS DOCUMENT IS THE PROPERTY OF FAIRVIEW MICROWAVE CORPORATION. ALL RIGHTS RESERVED.

SHEET 1 OF 1

ALL DIMENSIONS SHOWN ARE FOR REFERENCE ONLY.

SCALE N/A

SIZE	CAGE CODE	DRAWN BY	ITEM NO.	REV
A	3FKR5	K.DANG	FMW137TR1001	A

T-Rev D