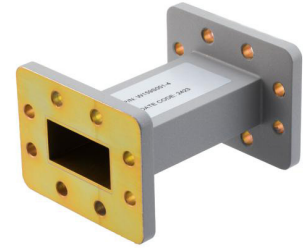


WR-159 Waveguide Section 4 Inch Straight Length, UG Cover and Grooved Flanges from 4.64 GHz to 7.05 GHz



FMW159S001-4

Features

- WR-159 Waveguide Section
- UG Cover and Grooved Flanges
- Frequency Range 4.64 GHz to 7.05 GHz
- 4 Inch Length
- Maximum VSWR 1.05:1

Applications

- Satellite Communications
- Radar Systems
- Test and Laboratory Setups

Description

Fairview Microwave's FMW159S001-4 is a 4 inch WR-159 straight waveguide section that operates from 4.64 GHz to 7.05 GHz. This straight waveguide section offers a maximum 1.05:1 VSWR. The input and output of this straight waveguide section is a UG Cover and UG Grooved Flanges. FMW159S001-4 is part of over 40,000 RF, microwave and millimeter wave components. WR-159 straight waveguide section will ship worldwide the same day it is purchased along with our other RF components.

Electrical Specifications

Description	Minimum	Typical	Maximum	Units
Frequency Range	4.64		7.05	GHz
VSWR			1.05:1	
Insertion Loss		0.2		dB

Mechanical Specifications

Waveguide Size	WR-159
Waveguide Design	Standard
Section Length	4 in [101.6 mm]

Description	Flange 1	Waveguide	Flange 2
Flange Type	UG Cover		UG Grooved
Flange Designation		WR-159	
Material	Aluminum	Aluminum	Aluminum
Plating	Chromate Conversion	Chromate Conversion	Chromate Conversion
Color	Gray	Gray	Gray

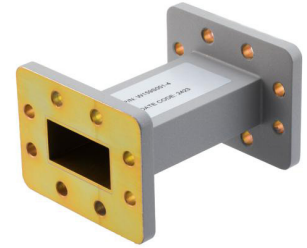
Temperature

Temperature Operating Range -40 to +70 deg C

Size

Weight 0.5 lbs [226.8 g]

WR-159 Waveguide Section 4 Inch Straight Length, UG Cover and Grooved Flanges from 4.64 GHz to 7.05 GHz



FMW159S001-4

Compliance Certifications (see [product page](#) for current document)

Plotted and Other Data

Notes:

- Values at +25 °C, sea level

WR-159 Waveguide Section 4 Inch Straight Length, UG Cover and Grooved Flanges from 4.64 GHz to 7.05 GHz from Fairview Microwave is in-stock and available to ship same-day. All of our RF/microwave products are available off-the-shelf from our ISO 9001:2008 certified facilities in Lewisville, Texas. Fairview Microwave is RF on-demand.

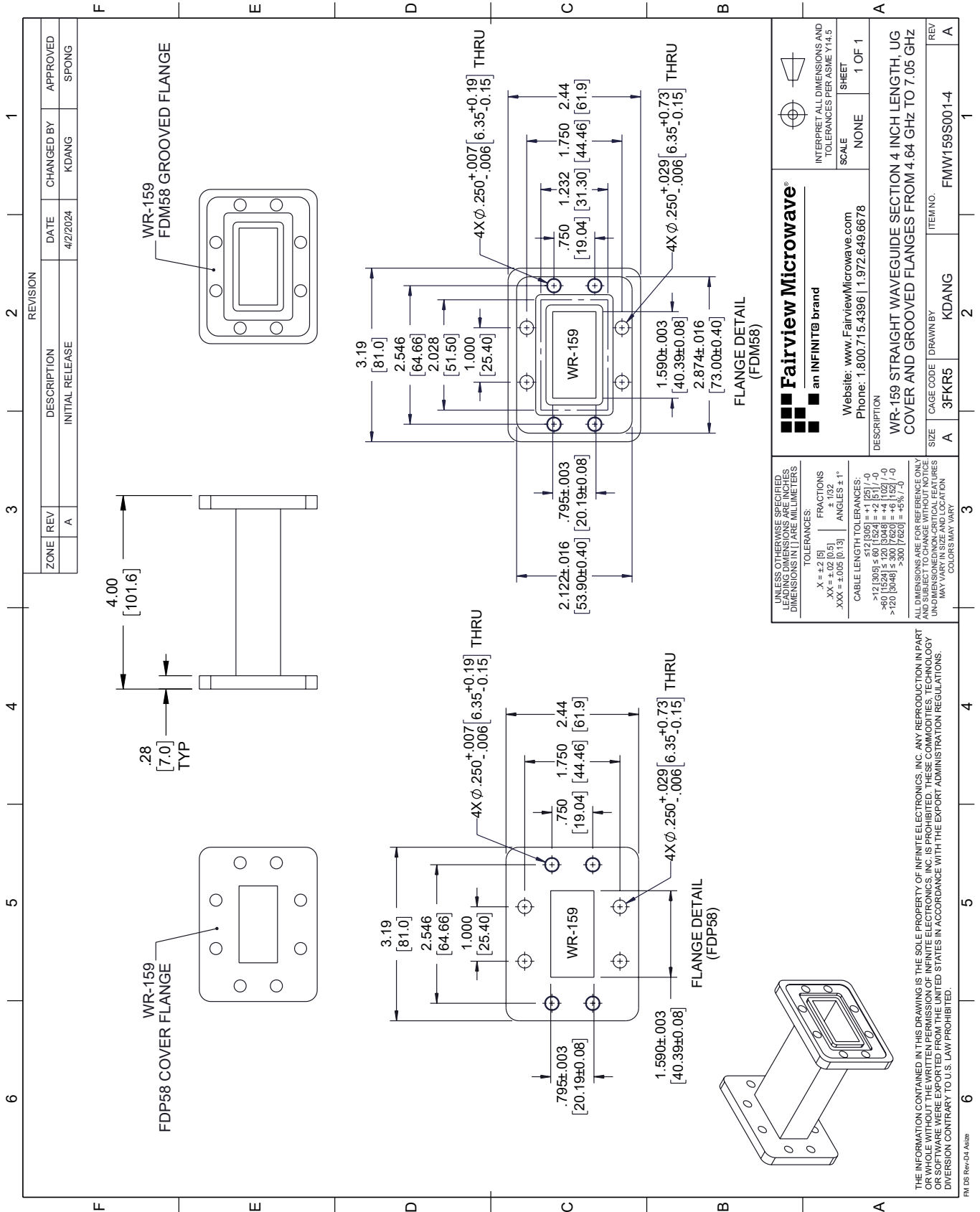
For additional information on this product, please click the following link: [WR-159 Waveguide Section 4 Inch Straight Length, UG Cover and Grooved Flanges from 4.64 GHz to 7.05 GHz FMW159S001-4](#)

URL: <https://www.fairviewmicrowave.com/wr-159-waveguide-section-straight-ug-standard-fmw159s001-4-p.aspx>

The information contained within this document is accurate to the best of our knowledge and representative of the part described herein. It may be necessary to make modifications to the part and/or the documentation of the part in order to implement improvements. Fairview Microwave reserves the right to make such changes as required. Unless otherwise stated, all specifications are nominal. Fairview Microwave does not make any representation or warranty regarding the suitability of the part described herein for any particular purpose, and Fairview Microwave does not assume liability arising out of the use of any part or document.

FMW159S001-4 CAD Drawing

WR-159 Waveguide Section 4 Inch Straight Length, UG Cover and Grooved Flanges from 4.64 GHz to 7.05 GHz



REVISION		DATE	CHANGED BY	APPROVED
ZONE	REV			
	A	4/2/2024	KDANG	SPONG
DESCRIPTION				
INITIAL RELEASE				

Fairview Microwave®
an INFINIT® brand

Website: www.FairviewMicrowave.com
Phone: 1.800.715.4396 | 1.972.649.6678

INTERPRET ALL DIMENSIONS AND TOLERANCES PER ASME Y14.5

SCALE: NONE
SHEET: 1 OF 1

DESCRIPTION: WR-159 STRAIGHT WAVEGUIDE SECTION 4 INCH LENGTH, UG COVER AND GROOVED FLANGES FROM 4.64 GHz TO 7.05 GHz

SIZE: A
CAGE CODE: 3FKR5
DRAWN BY: KDANG
ITEM NO.: FMW159S001-4

UNLESS OTHERWISE SPECIFIED, LEADING DIMENSIONS ARE IN INCHES AND DIMENSIONS IN [] ARE MILLIMETERS.

TOLERANCES:
X = ±.2 [5] FRACTIONS ± 1/32
XX = ±.02 [0.5] ANGLES ± 1°
.XXX = ±.005 [0.13]

CABLE LENGTH TOLERANCES:
≤ 12 [305] ±.005 [-0.125] / -0
> 60 [1524] ±.020 [3048] = ±.010 [254] / -0
> 120 [3048] ±.030 [7620] = ±.015 [381] / -0

ALL DIMENSIONS ARE FOR REFERENCE ONLY. UNDIMENSIONS/NON-CRITICAL FEATURES MAY VARY IN SIZE AND LOCATION. COLORS MAY VARY.

THE INFORMATION CONTAINED IN THIS DRAWING IS THE SOLE PROPERTY OF INFINITE ELECTRONICS, INC. ANY REPRODUCTION IN PART OR WHOLE WITHOUT THE WRITTEN PERMISSION OF INFINITE ELECTRONICS, INC. IS PROHIBITED. THESE COMMODITIES, TECHNOLOGY OR SOFTWARE WERE EXPORTED FROM THE UNITED STATES IN ACCORDANCE WITH THE EXPORT ADMINISTRATION REGULATIONS. DIVISION CONTRARY TO U.S. LAW PROHIBITED.

FM DS Rev-D4 Alt2b