

WR-229 90 Degree Waveguide Right Hand Twist  
Using a UG Cover And Grooved Flanges And  
a 3.22 GHz to 4.9 GHz Frequency Range



**FMW229TW001**

**Features**

- WR-229 Waveguide
- UG Cover and UG Grooved Flange
- 3.22 GHz to 4.9 GHz Frequency Ranges
- 90° Right Hand (Clockwise) Twist

**Applications**

- Instrumentation
- Precision Measurements
- Prototyping and Characterization
- Production Systems

**Description**

The FMW229TW001 is a 90 degree WR-229 waveguide twist that is part of a family of precision manufactured waveguide twists with UG Cover and UG Grooved flanges. The family includes right and left hand 45 degree twists as well as 90 degree twists. These twists are offered in the Ka through W waveguide bands (18 to 110 GHz).

**Electrical Specifications**

Description	Minimum	Typical	Maximum	Units
Frequency Range	3.22		4.9	GHz
VSWR		1.15:1		
Insertion Loss		0.2		dB

**Mechanical Specifications**

Waveguide Size	WR-229		
Section Length	7.87 in [199.9 mm]		
Description	Flange 1	Waveguide	Flange 2
Flange Type	UG Cover		UG Grooved
Interface	UG	WR-229	UG
Material	Aluminum	Aluminum	Aluminum
Plating	Chromate Conversion	Chromate Conversion	Chromate Conversion
Color	Gray	Gray	Gray

**Environmental Specifications**

Temperature Operating Range	-40 to 70 deg C
-----------------------------	-----------------

**Compliance Certifications** (see [product page](#) for current document)

**Plotted and Other Data**

Notes:

## WR-229 90 Degree Waveguide Right Hand Twist Using a UG Cover And Grooved Flanges And a 3.22 GHz to 4.9 GHz Frequency Range



### FMW229TW001

---

#### Typical Performance Data

WR-229 90 Degree Waveguide Right Hand Twist Using a UG Cover And Grooved Flanges And a 3.22 GHz to 4.9 GHz Frequency Range from Fairview Microwave is in-stock and available to ship same-day. All of our RF/microwave products are available off-the-shelf from our ISO 9001:2008 certified facilities in Lewisville, Texas. Fairview Microwave is RF on-demand.

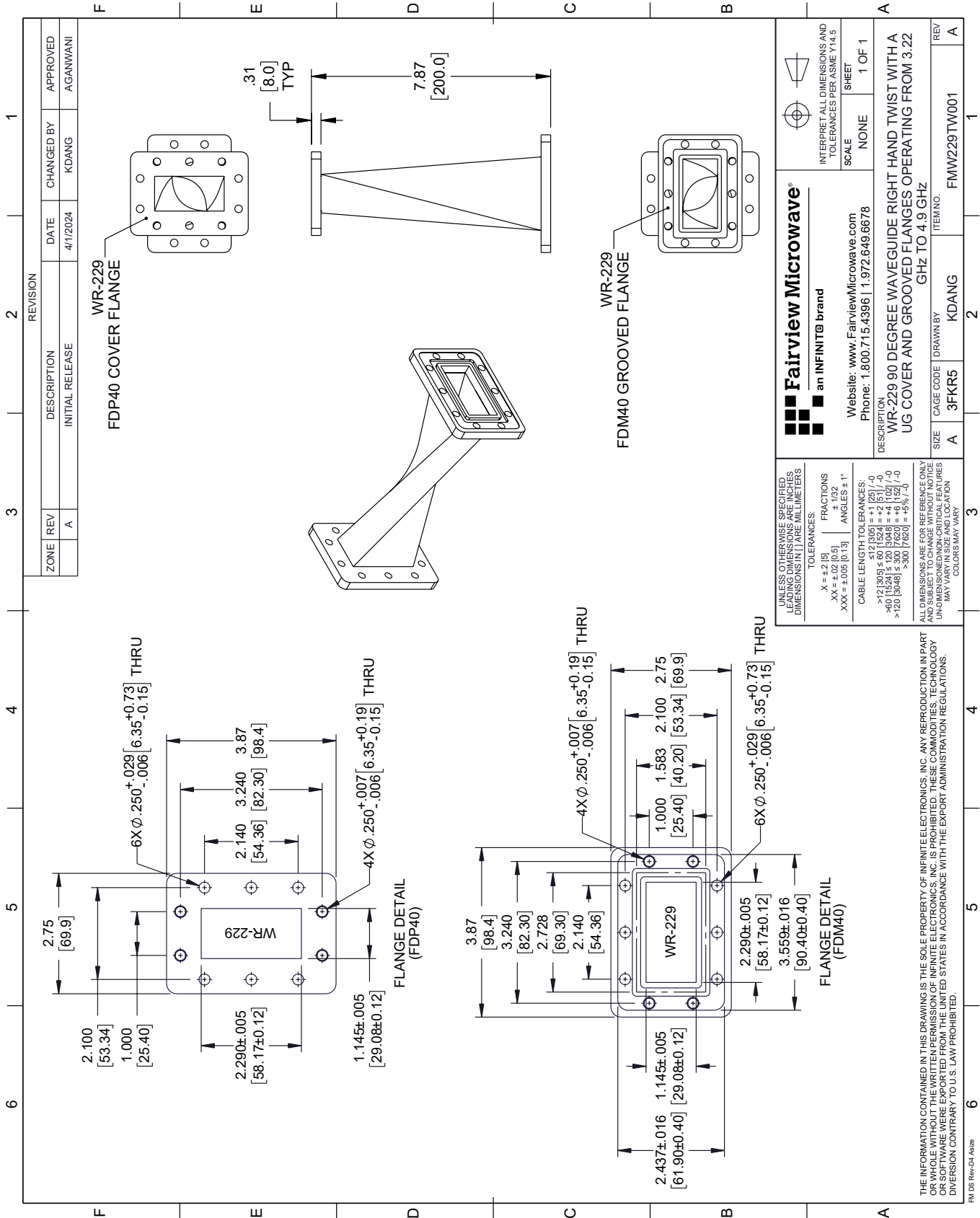
For additional information on this product, please click the following link: [WR-229 90 Degree Waveguide Right Hand Twist Using a UG Cover And Grooved Flanges And a 3.22 GHz to 4.9 GHz Frequency Range FMW229TW001](https://www.fairviewmicrowave.com/wr-229-90-waveguide-twist-ug-3.22-4.9-ghz-fmw229tw001-p.aspx)

URL: <https://www.fairviewmicrowave.com/wr-229-90-waveguide-twist-ug-3.22-4.9-ghz-fmw229tw001-p.aspx>

The information contained within this document is accurate to the best of our knowledge and representative of the part described herein. It may be necessary to make modifications to the part and/or the documentation of the part in order to implement improvements. Fairview Microwave reserves the right to make such changes as required. Unless otherwise stated, all specifications are nominal. Fairview Microwave does not make any representation or warranty regarding the suitability of the part described herein for any particular purpose, and Fairview Microwave does not assume liability arising out of the use of any part or document.

# FMW229TW001 CAD Drawing

WR-229 90 Degree Waveguide Right Hand Twist Using a UG Cover And Grooved Flanges And a 3.22 GHz to 4.9 GHz Frequency Range



REVISION		DATE	CHANGED BY	APPROVED
ZONE	REV	DESCRIPTION	INITIAL RELEASE	
	A			AGANWANI

 <b>Fairview Microwave</b> an INFINITI® brand		Website: <a href="http://www.FairviewMicrowave.com">www.FairviewMicrowave.com</a> Phone: 1.800.715.4396   1.972.649.6678	INTERPRET ALL DIMENSIONS AND TOLERANCES PER ASME Y14.5 SCALE: NONE SHEET: 1 OF 1
UNLESS OTHERWISE SPECIFIED, LEADING DIMENSIONS ARE IN INCHES AND UNLEADING DIMENSIONS ARE IN MILLIMETERS.		TOLERANCES: .X = ±.2 [5] .XX = ±.02 [0.5] .XXX = ±.005 [0.13]	
ALL DIMENSIONS ARE FOR REFERENCE ONLY. UNLESS OTHERWISE SPECIFIED, DIMENSIONS ARE IN INCHES AND UNLEADING DIMENSIONS ARE IN MILLIMETERS.		FRACTIONS: ± 1/32 ANGLES: ± 1°	
CABLE LENGTH TOLERANCES: >12 [305] ≤ 60 [1524] = ±.1 [2.5] / -0 >60 [1524] ≤ 120 [3048] = ±.4 [10.2] / -0 >120 [3048] ≤ 300 [7620] = ±.8 [20.3] / -0		UNLEADING DIMENSIONS ARE FOR REFERENCE ONLY. UNLESS OTHERWISE SPECIFIED, DIMENSIONS ARE IN INCHES AND UNLEADING DIMENSIONS ARE IN MILLIMETERS.	
THE INFORMATION CONTAINED IN THIS DRAWING IS THE SOLE PROPERTY OF INFINITE ELECTRONICS, INC. ANY REPRODUCTION IN PART OR WHOLE WITHOUT THE WRITTEN PERMISSION OF INFINITE ELECTRONICS, INC. IS PROHIBITED. THESE COMMODITIES, TECHNOLOGY OR SOFTWARE ARE EXPORTED FROM THE UNITED STATES IN ACCORDANCE WITH THE EXPORT ADMINISTRATION REGULATIONS. DIVERSION CONTRARY TO U.S. LAW PROHIBITED.		SIZE: A CAGE CODE: 3FKR5 DRAWN BY: KDWANG ITEM NO.: FMW229TW001	REV: A