

## Broadband Gain Horn Antenna, 6 GHz to 18 GHz 15 dBi Gain, SMA Female Connector

The FMWAN1158 broadband gain horn antenna (double ridge waveguide horn) from Fairview is part of our comprehensive selection of waveguide antennas. This broadband horn features an SMA Female coaxial connector and operates from 6 to 18 GHz.

Our FMWAN1158 broadband gain horn antenna has a nominal gain of 15 dBi with a typical input VSWR of 1.5:1. Fairview's double-ridge broadband horns are available in 10, 11, 13, 15, and 20 dBi models with varying cross band frequency ranges to suit all application needs.

Waveguide antennas, such as the FMWAN1158 are used in a wide variety of applications due to the high-power handling capability, low loss, high directivity, and near constant electrical performance. Our double ridge waveguide antennas with SMA Female interface are part of over 40,000 RF, microwave, and millimeter wave components from Fairview available worldwide and Ship same day.

### Configuration

Pattern	Directional
Polarization	Linear
Antenna Design Type	Broadband Gain Horn
RF Connector	SMA Female

### Electrical Specifications

Description	Min	Typ	Max	Units
Frequency Range	6		18	GHz
Gain		15		dBi
VSWR		1.5:1		

### Mechanical Specifications

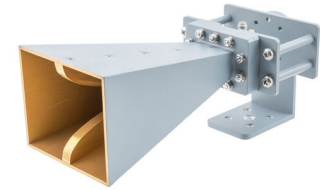
<b>Size</b>	
Length	4.5 in 114.3 mm
Width	2.84 in 72.14 mm
Height	2.7 in 68.58 mm
Weight	0.42 lbs 190.51 g
Body Material and Plating	Aluminum, Powder Coat
RF Connector	SMA Female

### Environmental Specifications

**Compliance Certifications** (see [product page](#) for current document)

### Plotted and Other Data

Notes:



### Features:

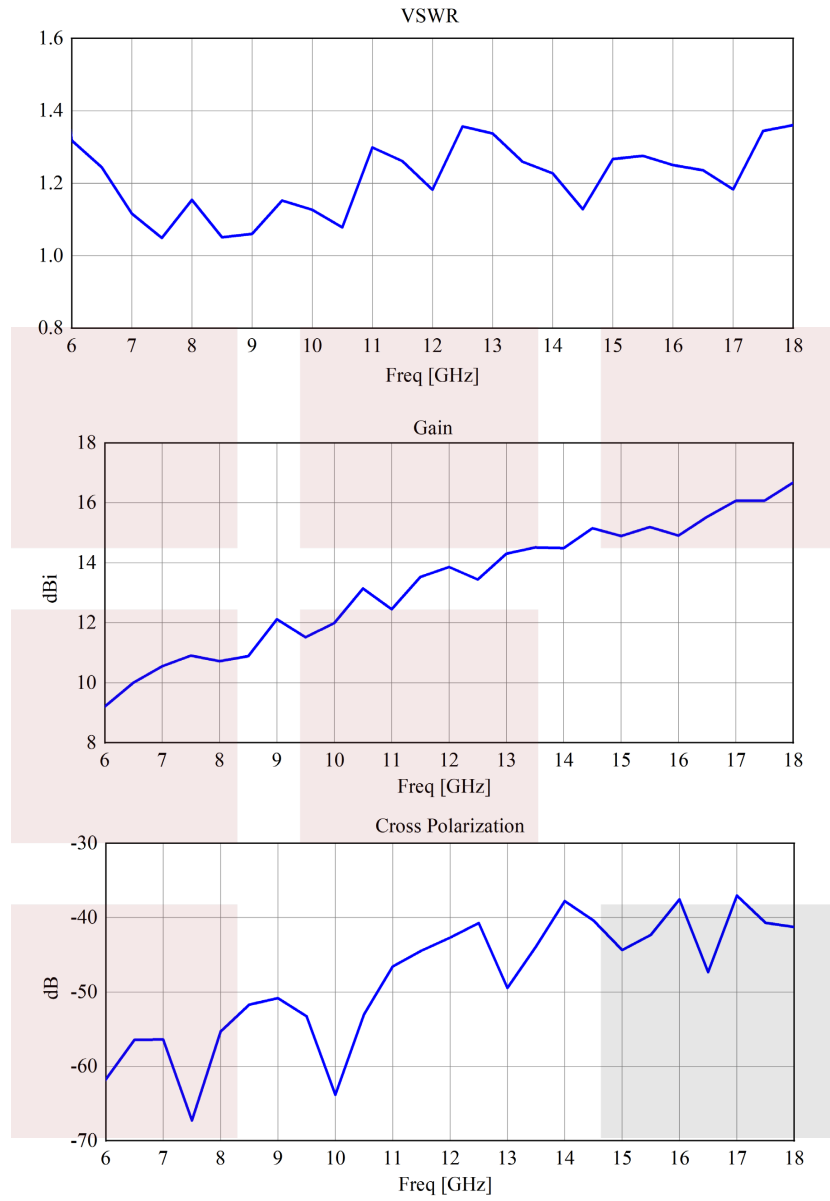
- Antenna Measurements
- Laboratory Use
- Microwave Testing
- Radome Testing
- EMC measurement
- Satellite Antenna Testing

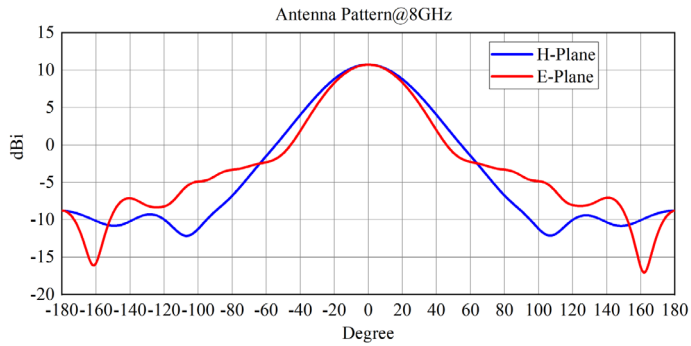
### Applications:

- Ultra Broadband 6 GHz to 18 GHz
- Double-Ridge Waveguide
- Linearly Polarized
- 15 dBi Nominal Gain
- SMA Female Connector
- Mounting Bracket Included
- Powder Coated Aluminum

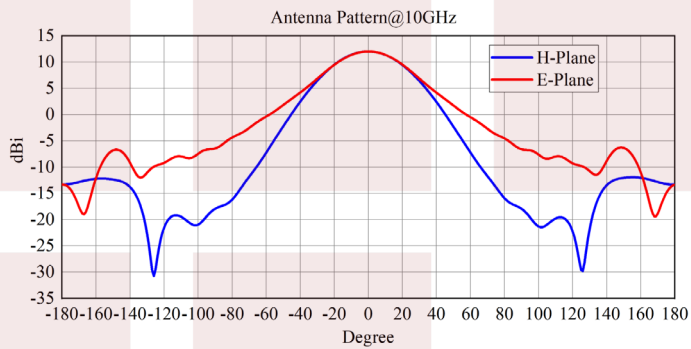
Fairview Microwave  
 301 Leora Ln., Suite 100  
 Lewisville, TX 75056  
 Tel: 1-800-715-4396 / (972) 649-6678  
 Fax: (972) 649-6689  
[www.fairviewmicrowave.com](http://www.fairviewmicrowave.com)  
[sales@fairviewmicrowave.com](mailto:sales@fairviewmicrowave.com)

**Typical Performance Data**

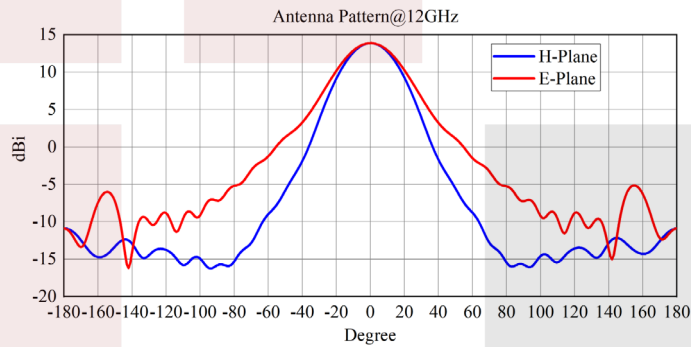




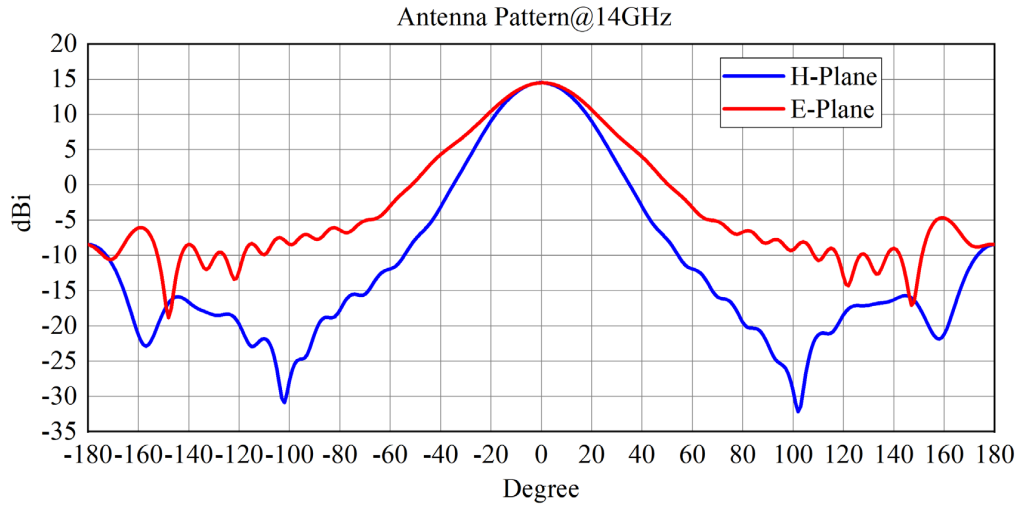
3dB beamwidth (°): E plane: 44.36 H plane: 50.58



3dB beamwidth (°): E plane: 43.98 H plane: 43.52

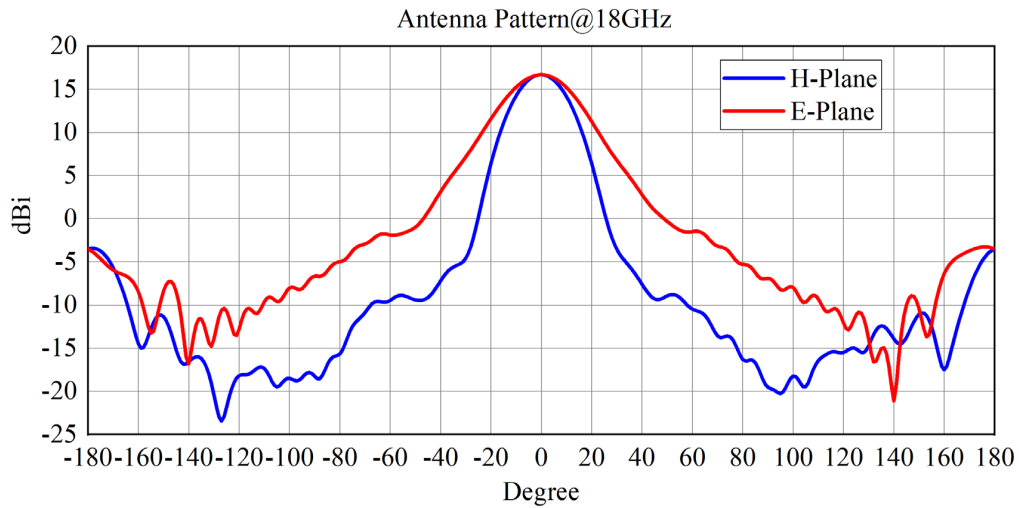


3dB beamwidth (°): E plane: 35.87 H plane: 31.83



3dB beamwidth (°): E plane: 34.29

H plane: 29.57



3dB beamwidth (°): E plane: 29.19

H plane: 21.94

Broadband Gain Horn Antenna, 6 GHz to 18 GHz 15 dBi Gain, SMA Female Connector from Fairview Microwave is in-stock and available to ship same-day. All of our RF/microwave products are available off-the-shelf from our ISO 9001:2008 certified facilities in Lewisville, Texas. Fairview Microwave is RF on-demand.

For additional information on this product, please click the following link: [Broadband Gain Horn Antenna, 6 GHz to 18 GHz 15 dBi Gain, SMA Female Connector FMWAN1158](#)

URL: <https://www.fairviewmicrowave.com/waveguide-horn-antenna-flange-15dbi-18-ghz-fmwan1158-p.aspx>

The information contained in this document is accurate to the best of our knowledge and representative of the part described herein. It may be necessary to make modifications to the part and/or the documentation of the part, in order to implement improvements. Fairview Microwave reserves the right to make such changes as required. Unless otherwise stated, all specifications are nominal. Fairview Microwave does not make any representation or warranty regarding the suitability of the part described herein for any particular purpose, and Fairview Microwave does not assume any liability arising out of the use of any part or documentation.

