

Broadband Horn Antenna, Dual Polarized 6 GHz to 18 GHz 12 dBi Gain, SMA Female Connector

The FMWAN1172 dual polarized broadband horn antenna (also known as a quad ridge horn antenna) from Fairview Microwave is part of our comprehensive selection of broadband antennas. This quad-ridge waveguide horn features dual SMA Female coaxial connector and operates from 6 GHz to 18 GHz.

Our FMWAN1172 dual polarized broadband horn antenna has a nominal gain of 12 dBi with a typical input VSWR of 1.5:1. Fairview Microwave's broadband horns are available with gain values from 6 to 21 dBi with varying frequency ranges to suit the application needs.

Quad ridge horn antennas, such as the FMWAN1172 are used in a wide variety of applications due to the high-power handling capability, low loss, high directivity, and near constant electrical performance. Our broadband antennas are part of over 40,000 RF, microwave, and millimeter wave components from Fairview Microwave available worldwide and ship same day.

Configuration

Pattern	Directional
Polarization	Dual Linear
Antenna Design Type	Broadband Gain Horn
RF Connector	SMA Female

Electrical Specifications

Description	Min	Typ	Max	Units
Frequency Range	6		18	GHz
Gain		12		dBi
VSWR		1.5:1		

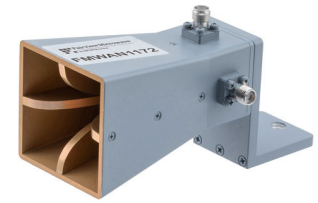
Performance by Frequency

Description	F1	F2	F3	F4	F5	Units
Frequency Range	6 to 8	8 to 10	10 to 13	13 to 15	15 to 18	GHz
Gain, Typ	9	9	11	13	14	dB

Mechanical Specifications

Size	
Length	1.69685 in 43.1 mm
Width	1.69685 in 43.1 mm
Height	3.129921 in 79.5 mm
Weight	0.305 lbs 138.35 g
Body Material and Plating	Aluminum
RF Connector	SMA Female

Environmental Specifications



Features:

- Ultra Broadband 6 GHz to 18 GHz
- Quad-Ridge Waveguide
- Dual Polarized
- 12 dBi Nominal Gain
- Dual SMA Female Coaxial Connector
- Mounting Bracket Included
- Powder Coated Aluminum

Applications:

- Antenna Measurements
- Laboratory Use
- Microwave Testing
- Radome Testing
- EMC measurement
- Satellite Antenna Testing
- Radar Cross Section

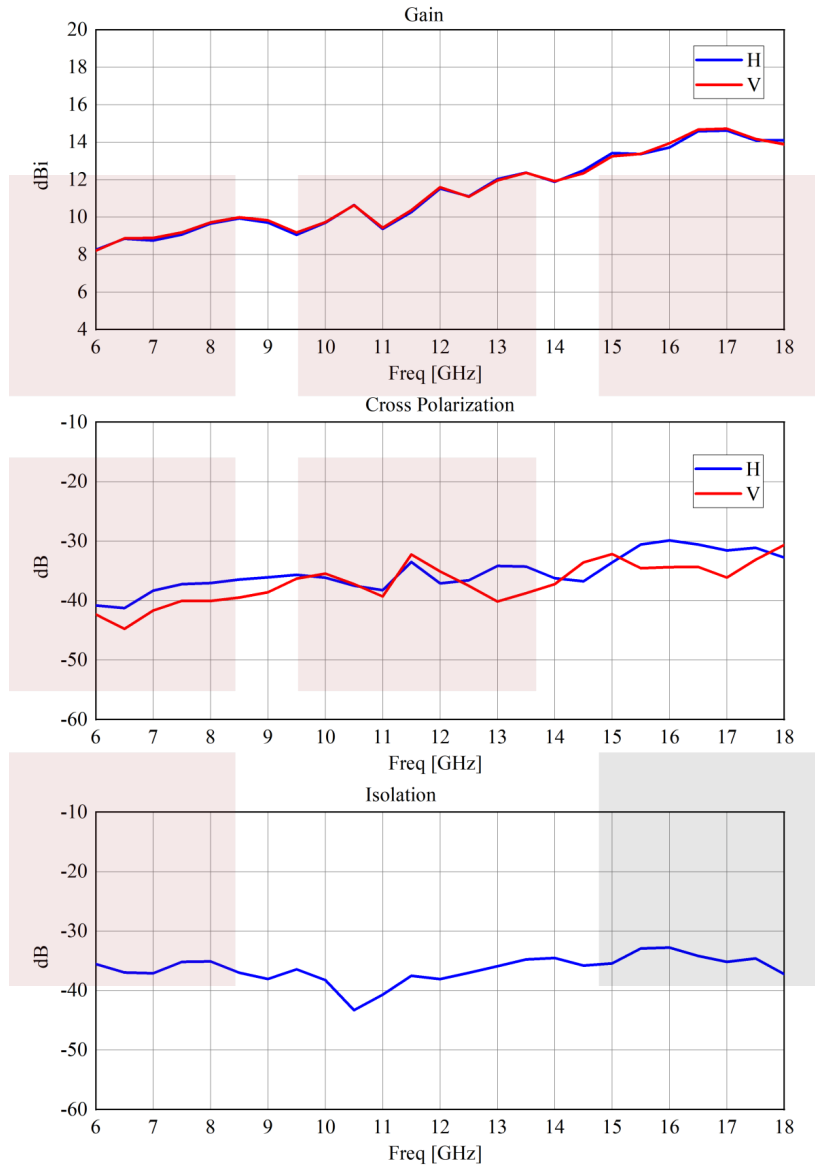
Fairview Microwave
 301 Leora Ln., Suite 100
 Lewisville, TX 75056
 Tel: 1-800-715-4396 / (972) 649-6678
 Fax: (972) 649-6689
www.fairviewmicrowave.com
sales@fairviewmicrowave.com

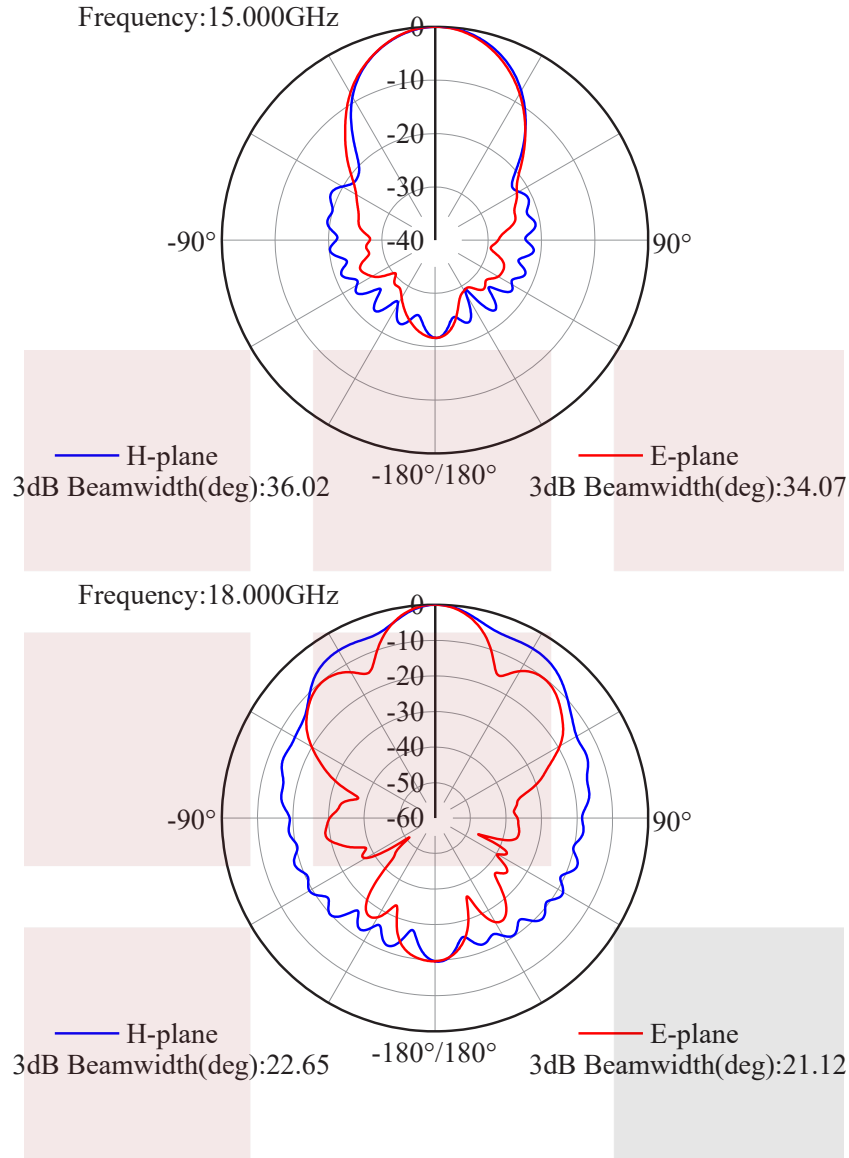
Compliance Certifications (see [product page](#) for current document)

Plotted and Other Data

Notes:

Typical Performance Data



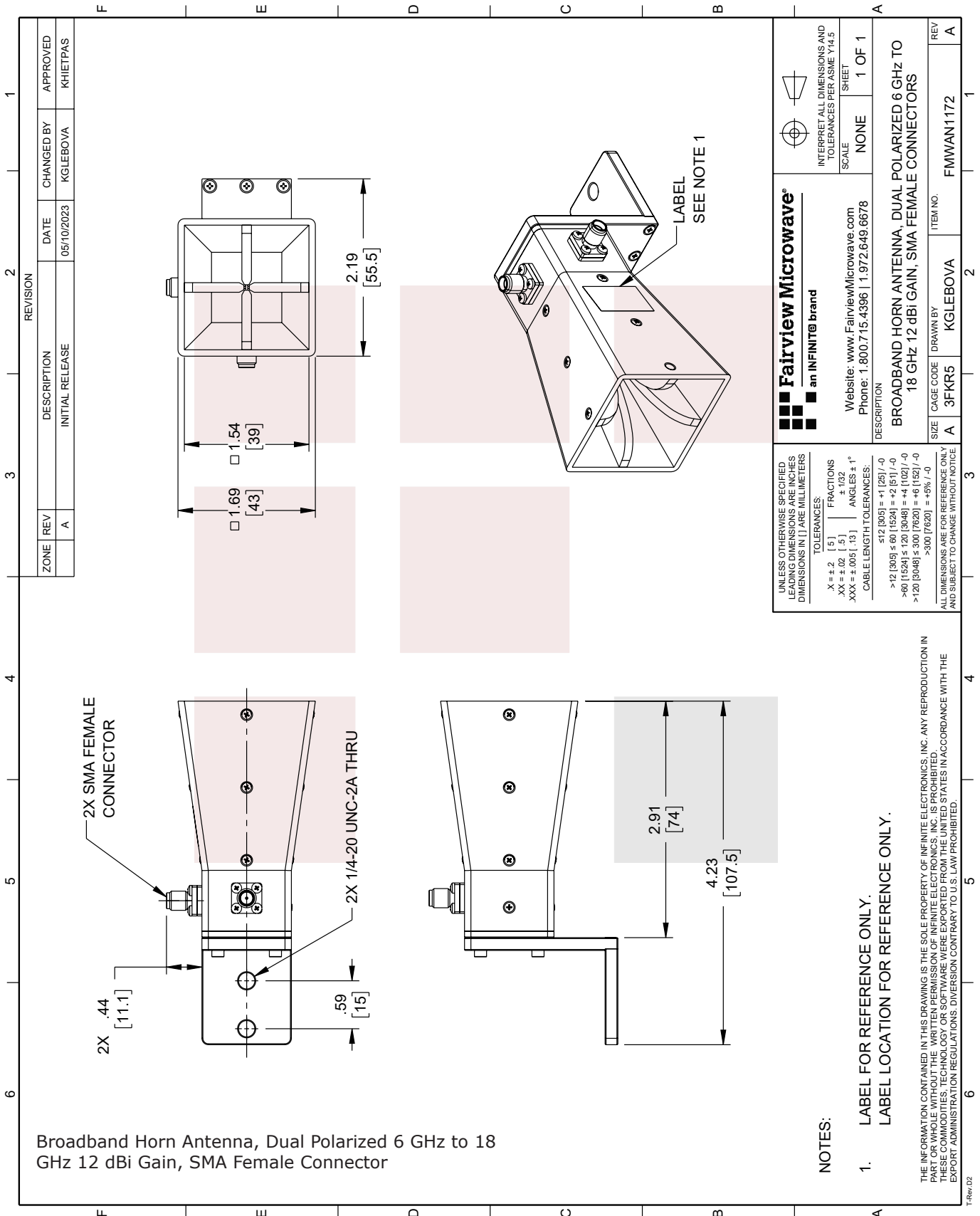


Broadband Horn Antenna, Dual Polarized 6 GHz to 18 GHz 12 dBi Gain, SMA Female Connector from Fairview Microwave is in-stock and available to ship same-day. All of our RF/microwave products are available off-the-shelf from our ISO 9001:2008 certified facilities in Lewisville, Texas. Fairview Microwave is RF on-demand.

For additional information on this product, please click the following link: [Broadband Horn Antenna, Dual Polarized 6 GHz to 18 GHz 12 dBi Gain, SMA Female Connector FMWAN1172](https://www.fairviewmicrowave.com/waveguide-horn-antenna-flange-12dbi-18-ghz-fmwan1172-p.aspx)

URL: <https://www.fairviewmicrowave.com/waveguide-horn-antenna-flange-12dbi-18-ghz-fmwan1172-p.aspx>

The information contained in this document is accurate to the best of our knowledge and representative of the part described herein. It may be necessary to make modifications to the part and/or the documentation of the part, in order to implement improvements. Fairview Microwave reserves the right to make such changes as required. Unless otherwise stated, all specifications are nominal. Fairview Microwave does not make any representation or warranty regarding the suitability of the part described herein for any particular purpose, and Fairview Microwave does not assume any liability arising out of the use of any part or documentation.



ZONE		REVISION		DESCRIPTION		DATE		CHANGED BY		APPROVED	
A				INITIAL RELEASE		05/10/2023		KGLEBOVA		KHIETPAS	

Broadband Horn Antenna, Dual Polarized 6 GHz to 18 GHz 12 dBi Gain, SMA Female Connector

301 Leora Ln., Suite 100, Lewisville, TX 75056 | Tel: 1-800-715-4396 / (972) 649-6678 / Fax: (972) 649-6689

<p>Fairview Microwave an INFINIT[®] brand</p> <p>Website: www.FairviewMicrowave.com Phone: 1.800.715.4396 1.972.649.6678</p>		<p>INTERPRET ALL DIMENSIONS AND TOLERANCES PER ASME Y14.5</p>	
<p>UNLESS OTHERWISE SPECIFIED, LEADING DIMENSIONS ARE IN INCHES. DIMENSIONS IN [] ARE MILLIMETERS.</p> <p>TOLERANCES:</p> <p>.X ± .2 [.5] FRACTIONS ± .132 [.5] ANGLES ± 1°</p> <p>.XXX ± .005 [.13] CABLE LENGTH TOLERANCES:</p> <p>512 [305] = +1 [25] / -0</p> <p>>12 [305] ≤ 60 [1524] = +2 [51] / -0</p> <p>>60 [1524] ≤ 120 [3048] = +4 [102] / -0</p> <p>>120 [3048] ≤ 300 [7620] = +6 [152] / -0</p> <p>>300 [7620] = +5% / -0</p>		<p>SCALE: NONE</p> <p>SHEET: 1 OF 1</p>	
<p>DESCRIPTION:</p> <p>BROADBAND HORN ANTENNA, DUAL POLARIZED 6 GHZ TO 18 GHZ 12 dBI GAIN, SMA FEMALE CONNECTORS</p>		<p>REV: A</p>	
<p>ALL DIMENSIONS ARE FOR REFERENCE ONLY AND SUBJECT TO CHANGE WITHOUT NOTICE.</p>		<p>ITEM NO. FMWAN1172</p>	

- NOTES:**
- LABEL FOR REFERENCE ONLY. LABEL LOCATION FOR REFERENCE ONLY.
- THE INFORMATION CONTAINED IN THIS DRAWING IS THE SOLE PROPERTY OF INFINITE ELECTRONICS, INC. ANY REPRODUCTION IN PART OR WHOLE WITHOUT THE WRITTEN PERMISSION OF INFINITE ELECTRONICS, INC. IS PROHIBITED. THESE COMMODITIES, TECHNOLOGY OR SOFTWARE WERE EXPORTED FROM THE UNITED STATES IN ACCORDANCE WITH THE EXPORT ADMINISTRATION REGULATIONS. DIVERSION CONTRARY TO U.S. LAW PROHIBITED.