

## WR-510 Waveguide Standard Gain Horn Antenna Operating From 1.45 GHz to 2.2 GHz, 10 dBi Gain with CPR-510F Flange

The FMWAN510-10 standard horn antenna (also known as waveguide horn) from Fairview is part of our comprehensive selection of waveguide antennas. This WR-510 waveguide horn features an CPR-510F waveguide flange and operates from 1450 to 2200 MHz.

Our FMWAN510-10 standard gain horn antenna has a nominal gain of 10 dBi with a typical input VSWR of 1.5:1. Fairview's waveguide horns are available in 10, 15, and 20 dBi models with varying frequency ranges to suit the application needs.

Waveguide antennas, such as the FMWAN510-10 are used in a wide variety of applications due to the high-power handling capability, low loss, high directivity, and near constant electrical performance. Our WR-510 waveguide antennas with are part of over 40,000 RF, microwave, and millimeter wave components from Fairview available worldwide and Ship same day.

### Configuration

Design	WR-510 Standard Gain Horn
Pattern	Directional
Polarization	Linear

### Electrical Specifications

Description	Min	Typ	Max	Units
Frequency Range	1.45		2.2	GHz
Nominal Gain		10		dBi
Horizontal 3dB Beam Width		55		Deg
Vertical 3dB Beam Width		55		Deg
VSWR			1.5:1	

### Mechanical Specifications

<b>Size</b>	
Length	9.6 in [243.84 mm]
Width/Diameter	7.2 in [182.88 mm]
Height	9.8 in [248.92 mm]
Weight	3.087 lbs [1.4 kg]

### Waveguide Interface

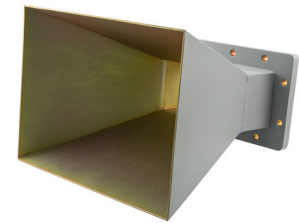
Waveguide Size	WR-510
Flange Type	CPR-510F
Body Material and Plating	Aluminum

z

**Compliance Certifications** (see [product page](#) for current document)

### Plotted and Other Data

Notes:



### Features:

- 1450 MHz to 2200 MHz
- Linearly Polarized
- 10 dBi Nominal Gain
- WR-510 with CPR-510F Flange
- Powder Coated Aluminum

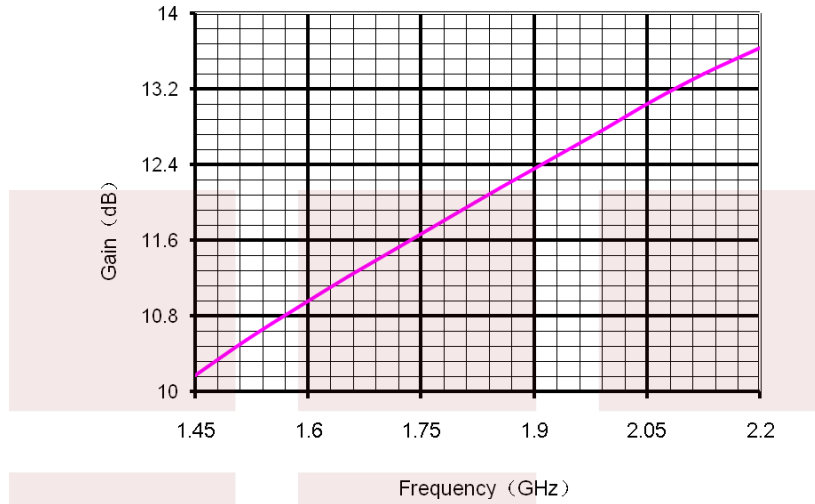
### Applications:

- Antenna Measurements
- Wireless Communication
- Laboratory Use
- Microwave Testing
- Radome Testing
- EMC measurement
- Satellite Antenna Testing

Fairview Microwave  
301 Leora Ln., Suite 100  
Lewisville, TX 75056  
Tel: 1-800-715-4396 / (972) 649-6678  
Fax: (972) 649-6689  
[www.fairviewmicrowave.com](http://www.fairviewmicrowave.com)  
[sales@fairviewmicrowave.com](mailto:sales@fairviewmicrowave.com)

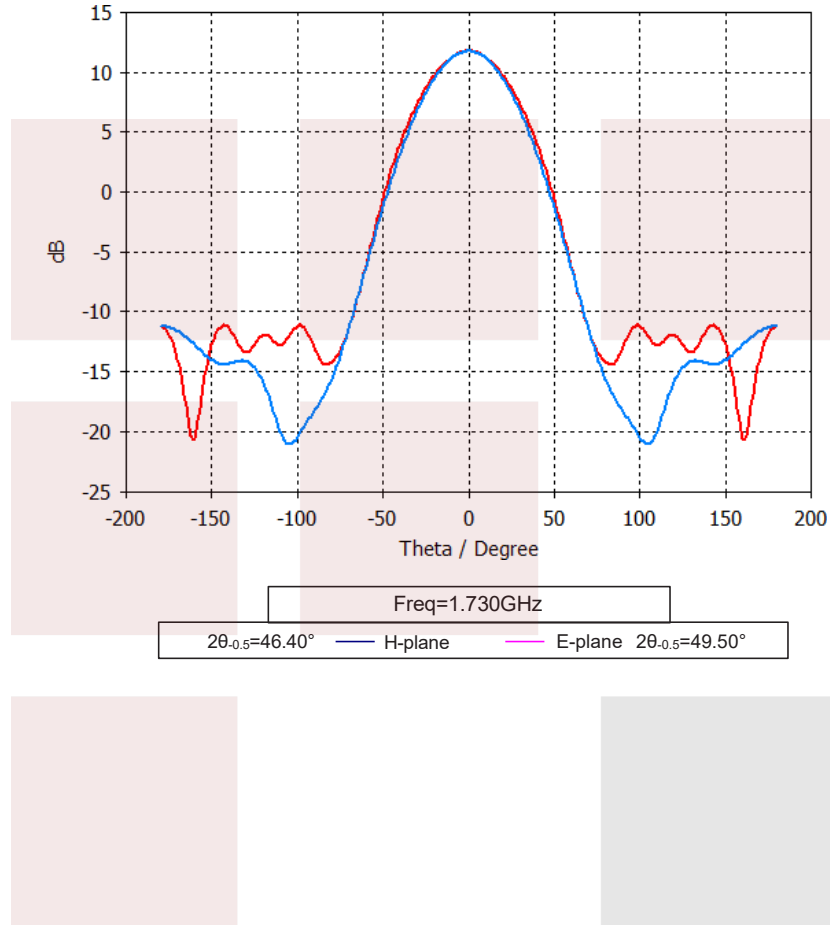
**Typical Performance Data**

Gain VS Frequency Curve:



Freq	Gain	Freq	Gain
1.45 GHz	10.17 dB	1.86 GHz	12.15 dB
1.52 GHz	10.55 dB	1.92 GHz	12.46 dB
1.59 GHz	10.89 dB	1.99 GHz	12.76 dB
1.65 GHz	11.21 dB	2.06 GHz	13.08 dB
1.72 GHz	11.53 dB	2.13 GHz	13.36 dB
1.79 GHz	11.85 dB	2.20 GHz	13.64 dB

Typical Pattern:



WR-510 Waveguide Standard Gain Horn Antenna Operating From 1.45 GHz to 2.2 GHz, 10 dBi Gain with CPR-510F Flange from Fairview Microwave is in-stock and available to ship same-day. All of our RF/microwave products are available off-the-shelf from our ISO 9001:2008 certified facilities in Lewisville, Texas. Fairview Microwave is RF on-demand.

For additional information on this product, please click the following link: [WR-510 Waveguide Standard Gain Horn Antenna Operating From 1.45 GHz to 2.2 GHz, 10 dBi Gain with CPR-510F Flange FMWAN510-10](#)

URL: <https://www.fairviewmicrowave.com/wr-510-waveguide-standard-gain-horn-antenna-operating-from-1.45-ghz-to-2.2-ghz-10-dbi-gain-with-cpr-510f-flange-fmwan510-10-p.aspx>

The information contained in this document is accurate to the best of our knowledge and representative of the part described herein. It may be necessary to make modifications to the part and/or the documentation of the part, in order to implement improvements. Fairview Microwave reserves the right to make such changes as required. Unless otherwise stated, all specifications are nominal. Fairview Microwave does not make any representation or warranty regarding the suitability of the part described herein for any particular purpose, and Fairview Microwave does not assume any liability arising out of the use of any part or documentation.



