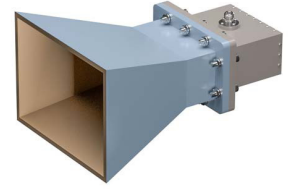


## WR-510 Waveguide Standard Gain Horn Antenna Operating From 1.45 GHz to 2.2 GHz, 10 dBi Gain with N Type Female



### FMWAN510-10NF

#### Features

- 1450 MHz to 2200 MHz
- Linearly Polarized
- 10 dBi Nominal Gain
- WR-510 with Type N Female connector
- Powder Coated Aluminum

#### Applications

- Antenna Measurements
- Wireless Communication
- Laboratory Use
- Microwave Testing
- Radome Testing
- EMC measurement
- Satellite Antenna Testing

#### Description

The FMWAN510-10NF standard horn antenna (also known as waveguide horn) from Fairview Microwave is part of our comprehensive selection of waveguide antennas. This WR-510 waveguide horn features an N Female Coax Connector and operates from 1450 to 2200 MHz.

Our FMWAN510-10NF standard gain horn antenna has a nominal gain of 10 dBi with a typical input VSWR of 1.5:1. Fairview Microwave's waveguide horns are available in 10, 15, and 20 dBi models with varying frequency ranges to suit the application needs.

Waveguide antennas, such as the FMWAN510-10NF are used in a wide variety of applications due to the high-power handling capability, low loss, high directivity, and near constant electrical performance. Our WR-510 waveguide antennas with are part of over 40,000 RF, microwave, and millimeter wave components from Fairview Microwave available worldwide and ship same day.

#### Configuration

Design	WR-510
Pattern	Directional
Polarization	Linear
Coaxial Interface	N Female

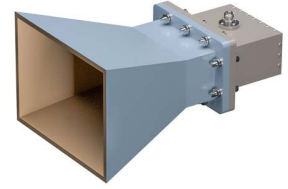
#### Electrical Specifications

Description	Minimum	Typical	Maximum	Units
Frequency Range	1.45		2.2	GHz
Gain		10		
Horizontal Half Power Beam Width		55		Degrees
Vertical Half Power Beam Width		55		Degrees
<b>Waveguide to Coaxial Adapter</b>				
VSWR			1.25:1	

#### Mechanical Specifications

<b>Size</b>	
Length	14.5 in [368.3 mm]
Width	7.3 in [185.42 mm]
Height	9.8 in [248.92 mm]
Weight	5.387 lbs [2.44 kg]

## WR-510 Waveguide Standard Gain Horn Antenna Operating From 1.45 GHz to 2.2 GHz, 10 dBi Gain with N Type Female



### FMWAN510-10NF

---

<b>RF Connector</b>	
Type	N Female
<b>Waveguide Interface</b>	
Waveguide Size	WR-510

**Compliance Certifications** (see [product page](#) for current document)

#### Plotted and Other Data

Notes:

#### Typical Performance Data

WR-510 Waveguide Standard Gain Horn Antenna Operating From 1.45 GHz to 2.2 GHz, 10 dBi Gain with N Type Female from Fairview Microwave is in-stock and available to ship same-day. All of our RF/microwave products are available off-the-shelf from our ISO 9001:2008 certified facilities in Lewisville, Texas. Fairview Microwave is RF on-demand.

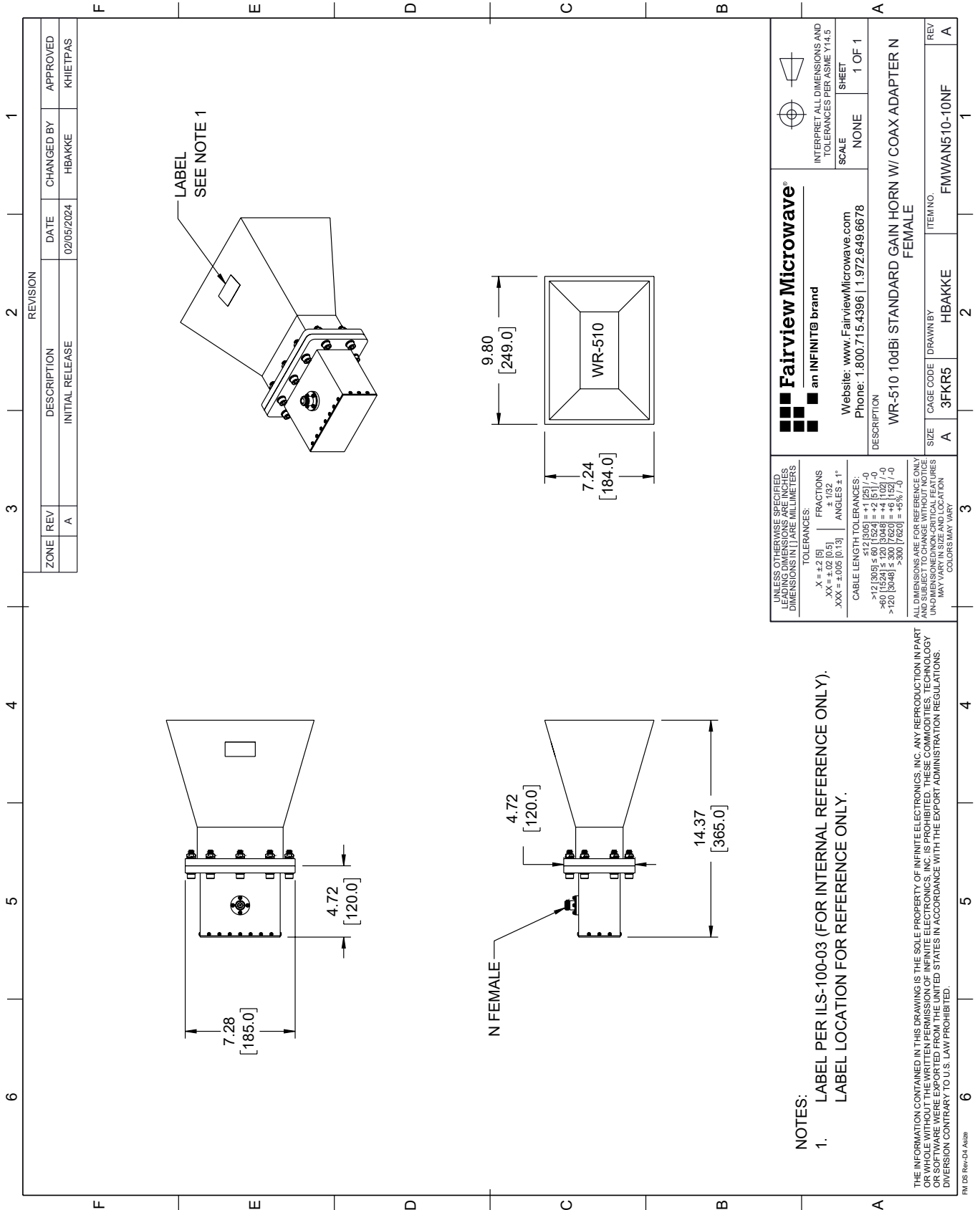
For additional information on this product, please click the following link: [WR-510 Waveguide Standard Gain Horn Antenna Operating From 1.45 GHz to 2.2 GHz, 10 dBi Gain with N Type Female FMWAN510-10NF](#)

URL: <https://www.fairviewmicrowave.com/wr-510-waveguide-standard-gain-horn-antenna-operating-from-1.45-ghz-to-2.2-ghz-10-dbi-gain-with-n-type-female-fmwan510-10nf-p.aspx>

The information contained within this document is accurate to the best of our knowledge and representative of the part described herein. It may be necessary to make modifications to the part and/or the documentation of the part in order to implement improvements. Fairview Microwave reserves the right to make such changes as required. Unless otherwise stated, all specifications are nominal. Fairview Microwave does not make any representation or warranty regarding the suitability of the part described herein for any particular purpose, and Fairview Microwave does not assume liability arising out of the use of any part or document.

# FMWAN510-10NF CAD Drawing

WR-510 Waveguide Standard Gain Horn Antenna Operating From 1.45 GHz to 2.2 GHz, 10 dBi Gain with N Type Female



REVISION		DATE	CHANGED BY	APPROVED
ZONE	REV	DESCRIPTION	INITIAL RELEASE	
	A			KHETTPAS

 <b>Fairview Microwave</b> an INFINITI® brand		Website: <a href="http://www.FairviewMicrowave.com">www.FairviewMicrowave.com</a> Phone: 1.800.715.4396   1.972.649.6678	INTERPRET ALL DIMENSIONS AND TOLERANCES PER ASME Y14.5 SCALE: NONE SHEET: 1 OF 1
UNLESS OTHERWISE SPECIFIED, LEADING DIMENSIONS ARE IN INCHES. DIMENSIONS IN [ ] ARE MILLIMETERS.		TOLERANCES: .X = ±.2 [5] .XX = ±.02 [0.5] .XXX = ±.005 [0.13]	
ALL DIMENSIONS ARE FOR REFERENCE ONLY. UNDIMENSIONED NON-CRITICAL FEATURES MAY VARY IN SIZE AND LOCATION. COLORS MAY VARY.		FRACTIONS: ± 1/32 ANGLES ± 1°	
CABLE LENGTH TOLERANCES: <12 [305] ≤ 60 [1524] = ±.1 [2.5] / -0 >60 [1524] ≤ 120 [3048] = ±.4 [102] / -0 >120 [3048] ≤ 300 [7620] = ±.8 [20] / -0		DESCRIPTION: WR-510 10dBi STANDARD GAIN HORN W/ COAX ADAPTER N FEMALE	
SIZE	CAGE CODE	DRAWN BY	ITEM NO.
A	3FKR5	HBAKKE	FMWAN510-10NF
REV			A

NOTES:

- LABEL PER ILS-100-03 (FOR INTERNAL REFERENCE ONLY). LABEL LOCATION FOR REFERENCE ONLY.

THE INFORMATION CONTAINED IN THIS DRAWING IS THE SOLE PROPERTY OF INFINITE ELECTRONICS, INC. ANY REPRODUCTION IN PART OR WHOLE WITHOUT THE WRITTEN PERMISSION OF INFINITE ELECTRONICS, INC. IS PROHIBITED. THESE COMMODITIES, TECHNOLOGY OR SOFTWARE WERE EXPORTED FROM THE UNITED STATES IN ACCORDANCE WITH THE EXPORT ADMINISTRATION REGULATIONS. DIVISION CONTRARY TO U.S. LAW PROHIBITED.

PM DS Rev-D4 Alt2