

WR-42 Waveguide Fixed Attenuator,  
20 dB, Operating from 17.6 GHz to 26.7 GHz, UG-595/U Square Cover Flange, Rated to 1 Watt



## FMWAT1022-20

### Features

- WR-42 Waveguide
- Typical Attenuation 20 dB
- Frequency Range 17.6 GHz to 26.7 GHz
- UG-595/U Cover Flanges
- VSWR 1.25:1 Max
- 1 Watts (CW) Max Power Handling

### Applications

- Instrumentation
- Research and Development
- System Calibration
- Test Benches

### Description

FMWAT1022-20 is a WR-42 waveguide attenuator with 20 dB attenuation, operating in the 17.6 to 26.7 GHz frequency range. With typical VSWR performance of 1.25:1, the attenuator uses an UG-595/U cover flange that is made of gold plated brass. Fairview Microwave offers standard mid-band tuned Waveguide fixed attenuators with attenuation values from 3 to 30 dB. Waveguide fixed attenuators are part of Fairview Microwave's comprehensive waveguide product offerings which are available in stock and ready for same-day shipment.

### Electrical Specifications

Description	Minimum	Typical	Maximum	Units
Frequency Range	17.6		26.7	GHz
Nominal Attenuation		20		dB
Attenuation		0.7		dB
VSWR			1.25:1	
Input Power (CW)			1	Watt

### Mechanical Specifications

#### Size

Length	3.15 in [80.01 mm]
Width	0.88 in [22.35 mm]
Height	0.88 in [22.35 mm]
Weight	0.13 lbs [58.97 g]
Finish	Grey Paint

Description	Flange 1	Waveguide	Flange 2
Interface	UG-595/U	WR-42	UG-595/U
Material	Brass Copper	Brass Copper	Brass Copper
Plating	Gold	Gold	Gold

### Environmental Specifications

#### Temperature

Operating Range	-40 to +70 deg C
Storage Range	-55 to +85 deg C

WR-42 Waveguide Fixed Attenuator,  
20 dB, Operating from 17.6 GHz to 26.7 GHz, UG-  
595/U Square Cover Flange, Rated to 1 Watt



## FMWAT1022-20

**Compliance Certifications** (see [product page](#) for current document)

### Plotted and Other Data

Notes:

WR-42 Waveguide Fixed Attenuator, 20 dB, Operating from 17.6 GHz to 26.7 GHz, UG-595/U Square Cover Flange, Rated to 1 Watt from Fairview Microwave is in-stock and available to ship same-day. All of our RF/microwave products are available off-the-shelf from our ISO 9001:2008 certified facilities in Lewisville, Texas. Fairview Microwave is RF on-demand.

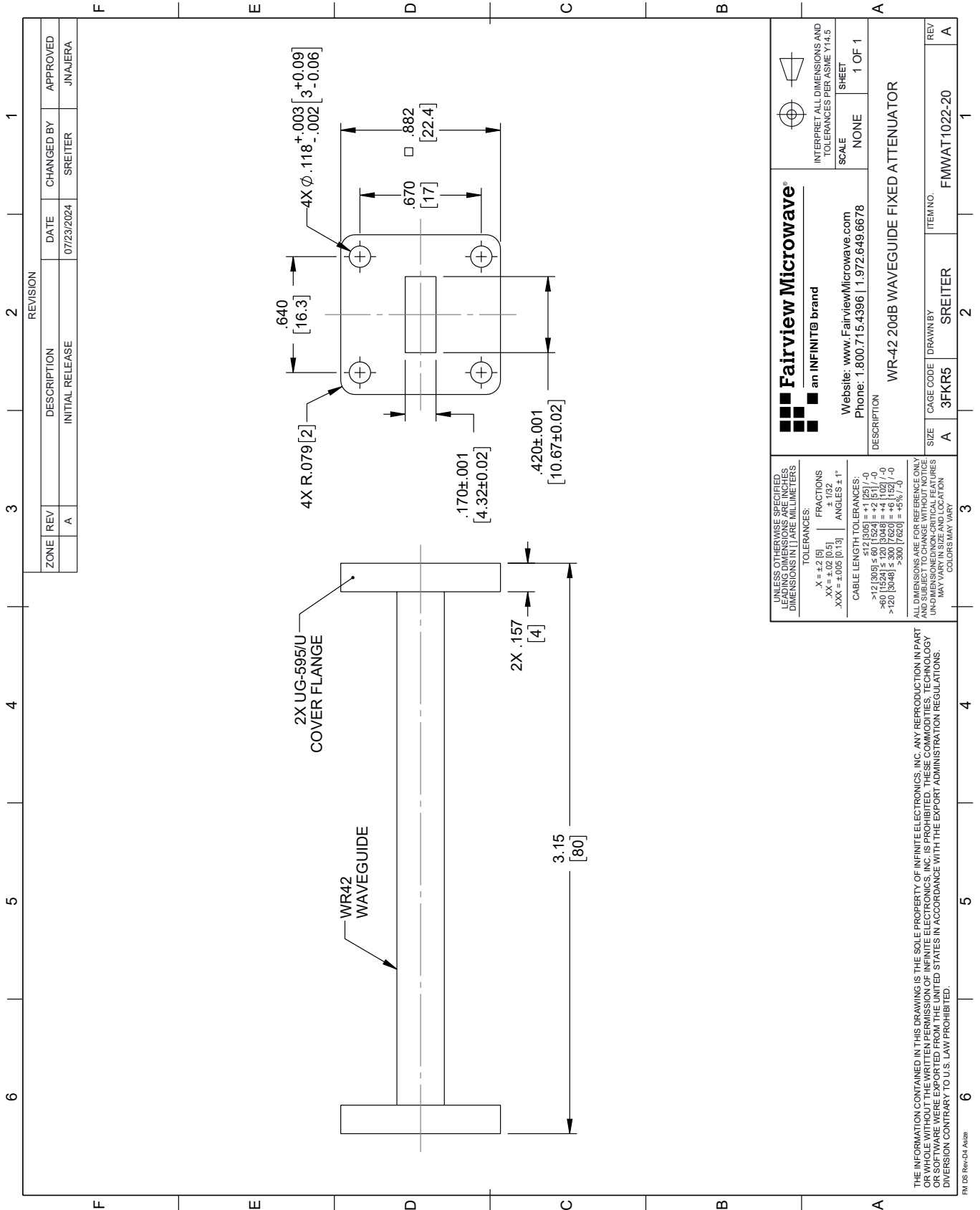
For additional information on this product, please click the following link: [WR-42 Waveguide Fixed Attenuator, 20 dB, Operating from 17.6 GHz to 26.7 GHz, UG-595/U Square Cover Flange, Rated to 1 Watt FMWAT1022-20](#)

URL: <https://www.fairviewmicrowave.com/wr-42-waveguide-attenuator-fixed-20-db-operating-from-17.6-to-26.7-ghz-ug-595-u-square-cover-flange-fmwat1022-20-p.aspx>

The information contained within this document is accurate to the best of our knowledge and representative of the part described herein. It may be necessary to make modifications to the part and/or the documentation of the part in order to implement improvements. Fairview Microwave reserves the right to make such changes as required. Unless otherwise stated, all specifications are nominal. Fairview Microwave does not make any representation or warranty regarding the suitability of the part described herein for any particular purpose, and Fairview Microwave does not assume liability arising out of the use of any part or document.

# FMWAT1022-20 CAD Drawing

WR-42 Waveguide Fixed Attenuator, 20 dB, Operating from 17.6 GHz to 26.7 GHz, UG-595/U Square Cover Flange, Rated to 1 Watt



ZONE	REV	DESCRIPTION	DATE	CHANGED BY	APPROVED
	A	INITIAL RELEASE	07/23/2024	SREITER	JNAJERA

 <b>Fairview Microwave</b> an INFINITE brand		 INTERPRET ALL DIMENSIONS AND TOLERANCES PER ASME Y14.5
Website: <a href="http://www.FairviewMicrowave.com">www.FairviewMicrowave.com</a> Phone: 1.800.715.4396   1.972.649.6678		SCALE: NONE SHEET: 1 OF 1
DESCRIPTION: WR-42 20dB WAVEGUIDE FIXED ATTENUATOR		
SIZE: A	CAGE CODE: 3FKR5	ITEM NO.: FMWAT1022-20
DRAWN BY: SREITER	REV: A	REV: A

UNLESS OTHERWISE SPECIFIED, LEADING DIMENSIONS ARE IN INCHES AND DIMENSIONS IN [ ] ARE IN MILLIMETERS.

TOLERANCES:  
.X = ±.2 [5]  
.XX = ±.02 [0.5]  
.XXX = ±.005 [0.13]

FRACTIONS: ± 1/32  
ANGLES: ± 1°

CABLE LENGTH TOLERANCES:  
< 12 [305] ≤ 60 [1524] = ± 1 [25] / -0  
> 60 [1524] ≤ 120 [3048] = ± 4 [102] / -0  
> 120 [3048] ≤ 300 [7620] = ± 8 [203] / -0

ALL DIMENSIONS ARE FOR REFERENCE ONLY. UNDIMENSIONED/UNCLEAR FEATURES MAY VARY IN SIZE AND LOCATION. COLORS MAY VARY.

THE INFORMATION CONTAINED IN THIS DRAWING IS THE SOLE PROPERTY OF INFINITE ELECTRONICS, INC. ANY REPRODUCTION IN PART OR WHOLE WITHOUT THE WRITTEN PERMISSION OF INFINITE ELECTRONICS, INC. IS PROHIBITED. THESE COMMODITIES, TECHNOLOGY OR SOFTWARE ARE EXPORTED FROM THE UNITED STATES IN ACCORDANCE WITH THE EXPORT ADMINISTRATION REGULATIONS. DIVERSION CONTRARY TO U.S. LAW PROHIBITED.

FM DS Rev-D4 Alt2