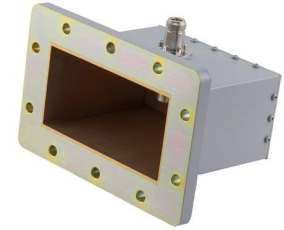


WR-510 to N-Type Female Waveguide to Coax Adapter CPR510F Flange With 1.45 GHz to 2.2 GHz



FMWCA1132

Features

- 1.45 to 2.2 GHz Frequency Range
- WR-510 Waveguide Interface
- CPR510F Flange
- N-Type Female RF Interface
- Comprehensive waveguide offering also include E-Bends, H-Bends, Sections, Filters, Terminations, Couplers, and more.

Applications

- Test Benches
- Radar
- Satellite
- Microwave Radio Systems
- Military and Space
- Communication Systems

Description

The FMWCA1132 is a waveguide to coaxial adapter operating at a frequency range of 1.45 GHz to 2.2 GHz. This adapter offers a WR-510 waveguide interface size coupled with a precision tolerance CPR510F flange. The FMWCA1132 is constructed of Aluminum to ensure durability. The coaxial connector offered by this adapter uses an N-Type Female connector.

Configuration

Waveguide Size	WR-510
Flange	CPR-510F
RF Connector	N Female
Body Geometry	Right Angle

Electrical Specifications

Description	Minimum	Typical	Maximum	Units
Frequency Range	1.45		2.2	GHz
VSWR			1.25:1	
Insertion Loss			0.2	dB
Input Power (CW)			100	Watts
Input Power (Peak)			5	kWatts

Mechanical Specifications

Size

Length	4.8 in [121.92 mm]
Width	7.3 in [185.42 mm]
Height	4.7 in [119.38 mm]
Weight	2.3 lbs [1.04 kg]

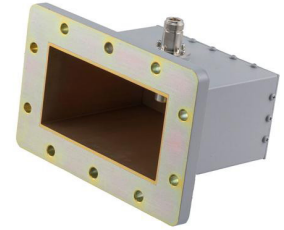
RF Connector

Connector Type	N Female
----------------	----------

Waveguide Interface

Waveguide Type	WR-510
Flange Type	CPR-510F
Body Material and Plating	Aluminum, Chromate Conversion
Plating Specification	Anticorrosion grey paint

WR-510 to N-Type Female Waveguide to Coax Adapter CPR510F Flange With 1.45 GHz to 2.2 GHz



FMWCA1132

Environmental Specifications

Temperature

Operating Range

-40 to +70 deg C

Storage Range

-55 to +85 deg C

Compliance Certifications (see [product page](#) for current document)

Plotted and Other Data

Notes:

- Values at +25 °C, sea level unless stated otherwise

Typical Performance Data

WR-510 to N-Type Female Waveguide to Coax Adapter CPR510F Flange With 1.45 GHz to 2.2 GHz from Fairview Microwave is in-stock and available to ship same-day. All of our RF/microwave products are available off-the-shelf from our ISO 9001:2008 certified facilities in Lewisville, Texas. Fairview Microwave is RF on-demand.

For additional information on this product, please click the following link: [WR-510 to N-Type Female Waveguide to Coax Adapter CPR510F Flange With 1.45 GHz to 2.2 GHz FMWCA1132](#)

URL: <https://www.fairviewmicrowave.com/wr-510-cpr-510f-flange-to-tyfm-n-female-waveguide-coax-adapter-fm-wca1132-p.aspx>

The information contained within this document is accurate to the best of our knowledge and representative of the part described herein. It may be necessary to make modifications to the part and/or the documentation of the part in order to implement improvements. Fairview Microwave reserves the right to make such changes as required. Unless otherwise stated, all specifications are nominal. Fairview Microwave does not make any representation or warranty regarding the suitability of the part described herein for any particular purpose, and Fairview Microwave does not assume liability arising out of the use of any part or document.

FMWCA1132 CAD Drawing

WR-510 to N-Type Female Waveguide to Coax Adapter CPR510F Flange With 1.45 GHz to 2.2 GHz

