

**WR-62 Waveguide Electromechanical Relay Latching
Switch SPDT 18 GHz Max Frequency, 2,000 Watts
Ku Band UG-419/U Square Cover Flange**

FMWGS6009



Features

- 12.4 to 18 GHz SPDT Waveguide Switch
- Optional DPDT Configuration
- WR-62 Waveguide with O-Rings
- Insertion Loss: 0.08 dB typ
- Isolation: 105 dB typ
- +28 Vdc Nominal Voltage
- Input Power Rating up to 2 kW CW max
- Latching TTL Logic Self Cut Off Actuator
- Position Indicator and Manual Override Access
- Fully Weatherized Package
- Quick Connect Circular DC Connector with Mate
- -40°C to +85°C Operating Temperature

Applications

- Electronic Warfare
- Electronic Countermeasures
- Microwave Radio
- VSAT
- Radar
- Space Systems
- Test Instrumentation
- Research and Development

Description

The FMWGS6009 electromechanical WR-62 waveguide switch operates across a wide frequency range from 12.4 GHz to 18 GHz and is configured for single pole double throw (SPDT) operation. A shorting plate on port 3 can be removed for optional double pole double throw (DPDT) operation. This innovative design features a latching TTL Logic controlled Self Cut Off actuator and patented motor drive with arc suppression. The motor drive housing supports a viewable position indicator window and a cover that can be removed for manual override access.

Impressive performance includes 0.08 dB typ insertion loss, 105 dB typ Isolation, 1.08:1 typ VSWR, and an operating life of 250K cycles minimum. The design operates across a temperature range of -40°C to +85°C, requires +28Vdc nominal bias voltage, and has an input power rating of up to 2 KW CW maximum. The waveguide ports have Grooved UG-416/U Square Cover Flanges (O-Rings included) for pressurized operation. The rugged package design is fully weatherized for up to 100% humidity exposure and supports a quick connect circular 10 pin MIL-SPEC DC bias connector with mate included.

Switch Type	SPDT
Actuator Type	Latching
Switching Sequence	Break Before Make
Actuator Options	TTL Logic, Self Cut Off, Window Indicator, Manual Override
TTL Control	on: 2.4 to 5.5 Volts
	off: 0 to 0.8 Volts
TTL Control Current	5 mA at 5 Volts
	5 mA at 0.8 Volts

Description	Min	Typ	Max	Units
Frequency Range	12.4		18	GHz
Impedance		50		
Operating Voltage	21	28	32	Volts
Actuating Current @ 28 Volts			1000	mA
VSWR		1.08:1	1.1:1	
Insertion Loss		0.08	0.1	dB
Isolation	60	105		dB
Switching Time		<67	80	ms
Input Power (CW)			2	KWatts

WR-62 Waveguide Electromechanical Relay Latching
Switch SPDT 18 GHz Max Frequency, 2,000 Watts
Ku Band UG-419/U Square Cover Flange

FMWGS6009



Description	Min	Typ	Max	Units
Input Power (Peak/Unpressurized) 10% Duty Cycle			70	kWatts

Mechanical Specifications

Size

Length	4.3 in [109.22 mm]
Width/Diameter	2.11 in [53.59 mm]
Height	2.11 in [53.59 mm]
Weight	1.0725 lbs [486.48 g]
Housing Material and Plating	Aluminum, Chem Film
Operating Life (Cold Switching)	250,000 Cycles
Operating Pressure	30 psig

Connectors

Waveguide Size	WR-62
Flange Type	Square Cover
Flange Designation	UG-419/U
Body Material and Plating	Aluminum, Chem Film
Body Plating Specification	MIL-DTL-5541 Type II Class 3

Mechanical Specification Notes:

Production Burn-In IAW MIL-DTL-55041 1500 cycles

Environmental Specifications

Temperature

Operating Range	-40 to +85 deg C
Storage Range	-55 to +100 deg C
Ingress Protection (IP) Rating	IP67
Humidity	0-100%, Fully Weatherized
ESD Sensitivity	ESD Sensitive Material, Transport material in Approved ESD bags. Handle in approved ESD Workstation.



Compliance Certifications (see [product page](#) for current document)

Plotted and Other Data

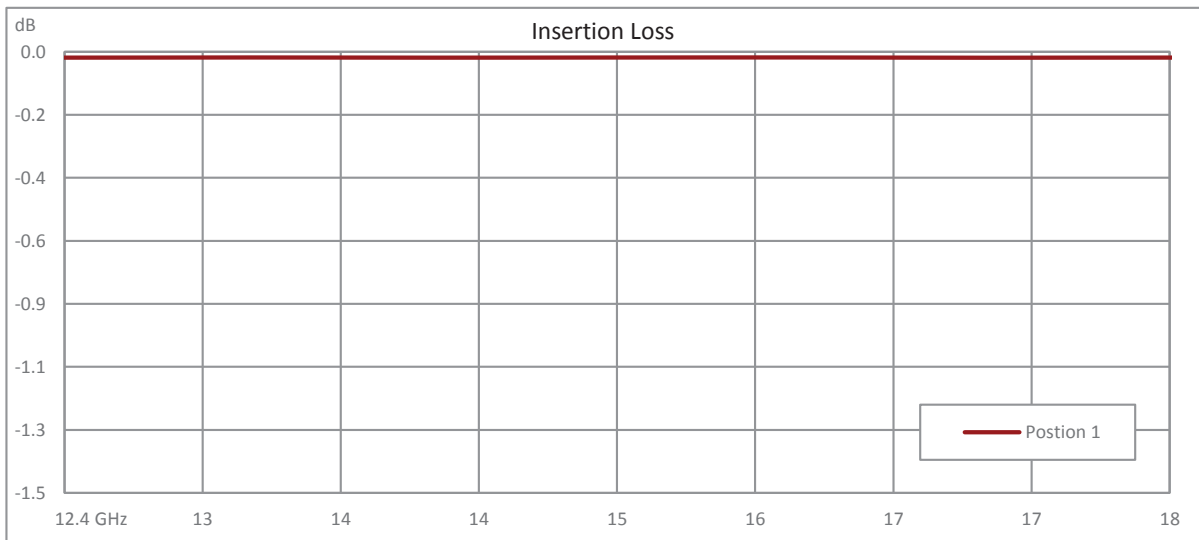
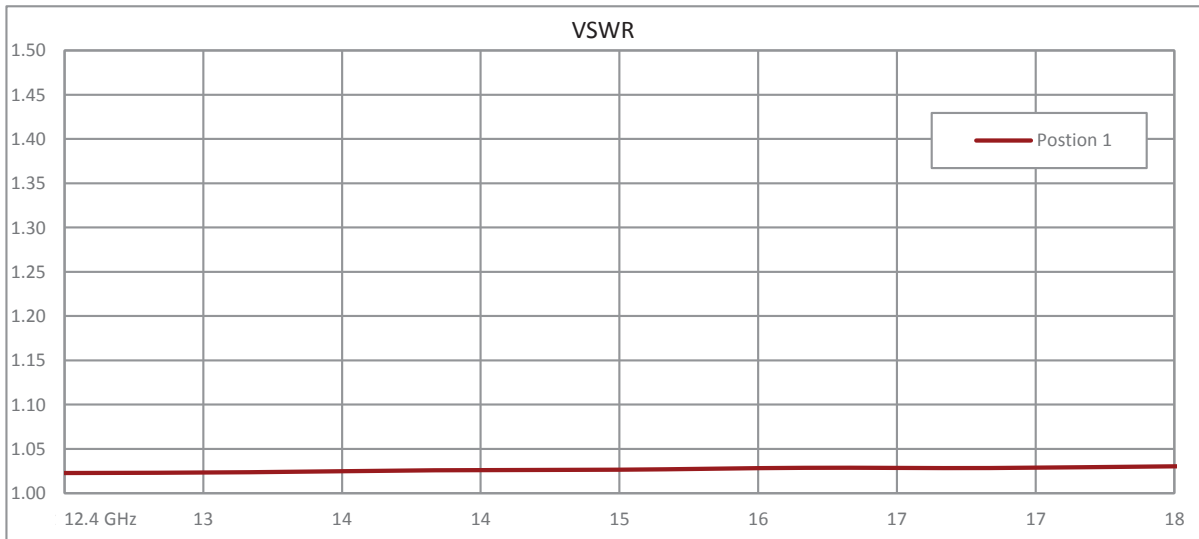
Notes:

WR-62 Waveguide Electromechanical Relay Latching
Switch SPDT 18 GHz Max Frequency, 2,000 Watts
Ku Band UG-419/U Square Cover Flange

FMWGS6009

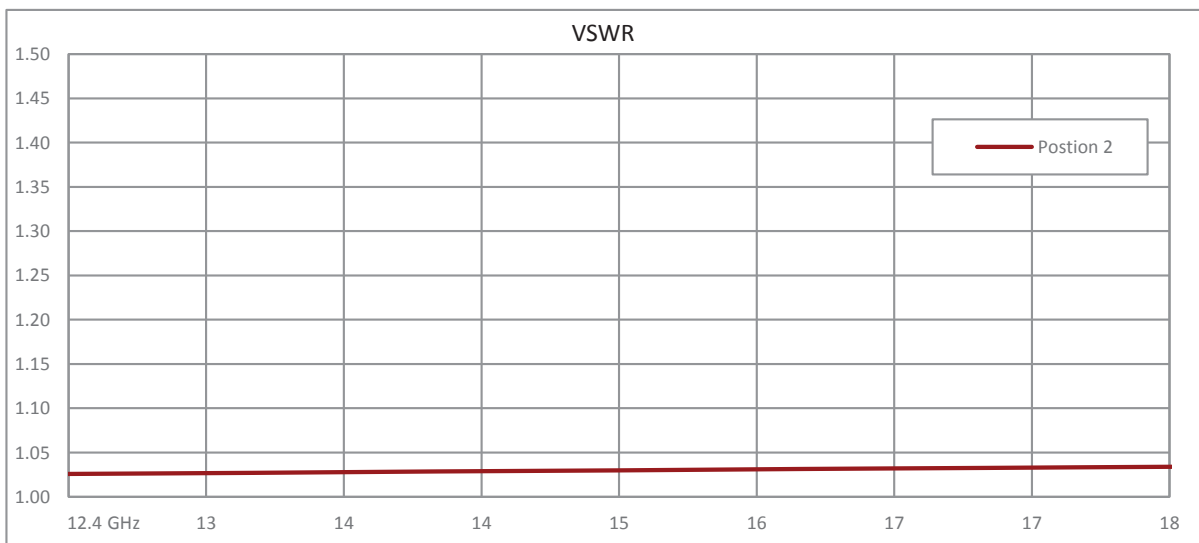
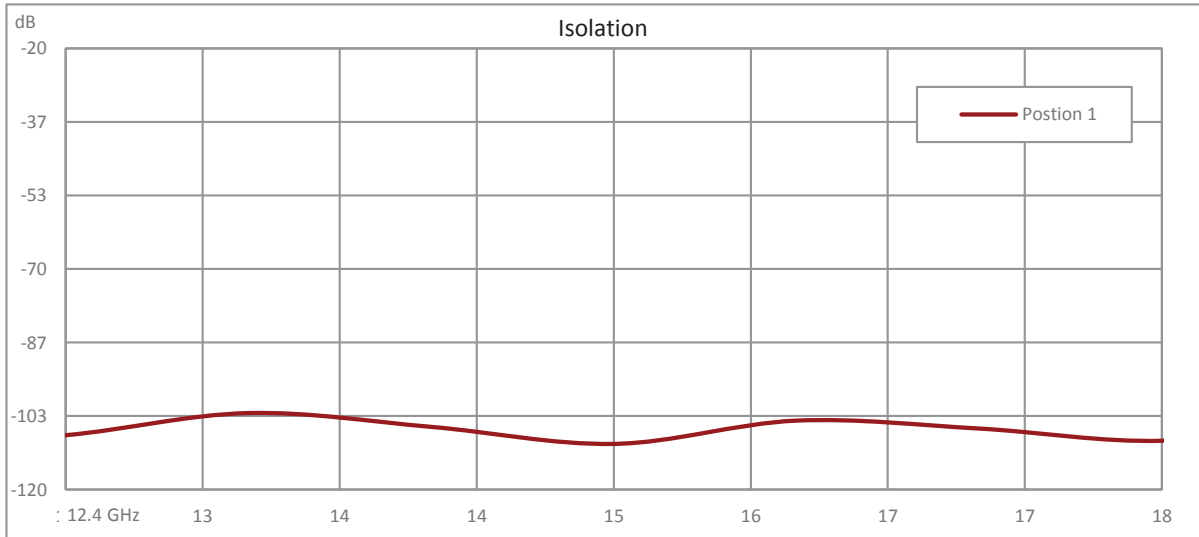


Typical Performance Data



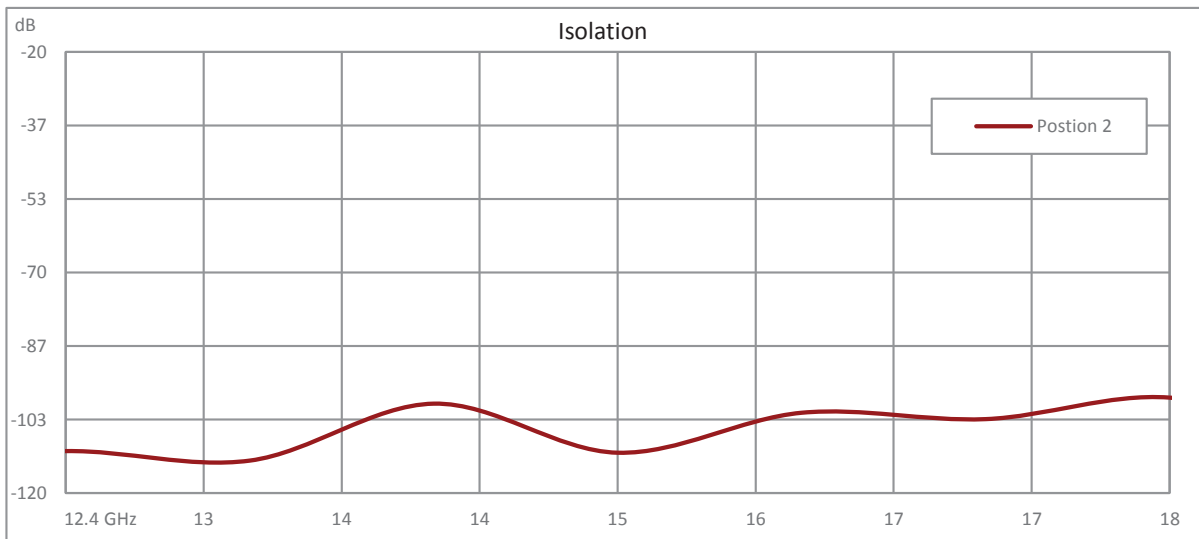
WR-62 Waveguide Electromechanical Relay Latching
Switch SPDT 18 GHz Max Frequency, 2,000 Watts
Ku Band UG-419/U Square Cover Flange

FMWGS6009



WR-62 Waveguide Electromechanical Relay Latching
Switch SPDT 18 GHz Max Frequency, 2,000 Watts
Ku Band UG-419/U Square Cover Flange

FMWGS6009



WR-62 Waveguide Electromechanical Relay Latching
Switch SPDT 18 GHz Max Frequency, 2,000 Watts
Ku Band UG-419/U Square Cover Flange

FMWGS6009



WR-62 Waveguide Electromechanical Relay Latching Switch SPDT 18 GHz Max Frequency, 2,000 Watts Ku Band UG-419/U Square Cover Flange from Fairview Microwave is in-stock and available to ship same-day. All of our RF/microwave products are available off-the-shelf from our ISO 9001:2008 certified facilities in Lewisville, Texas. Fairview Microwave is RF on-demand.

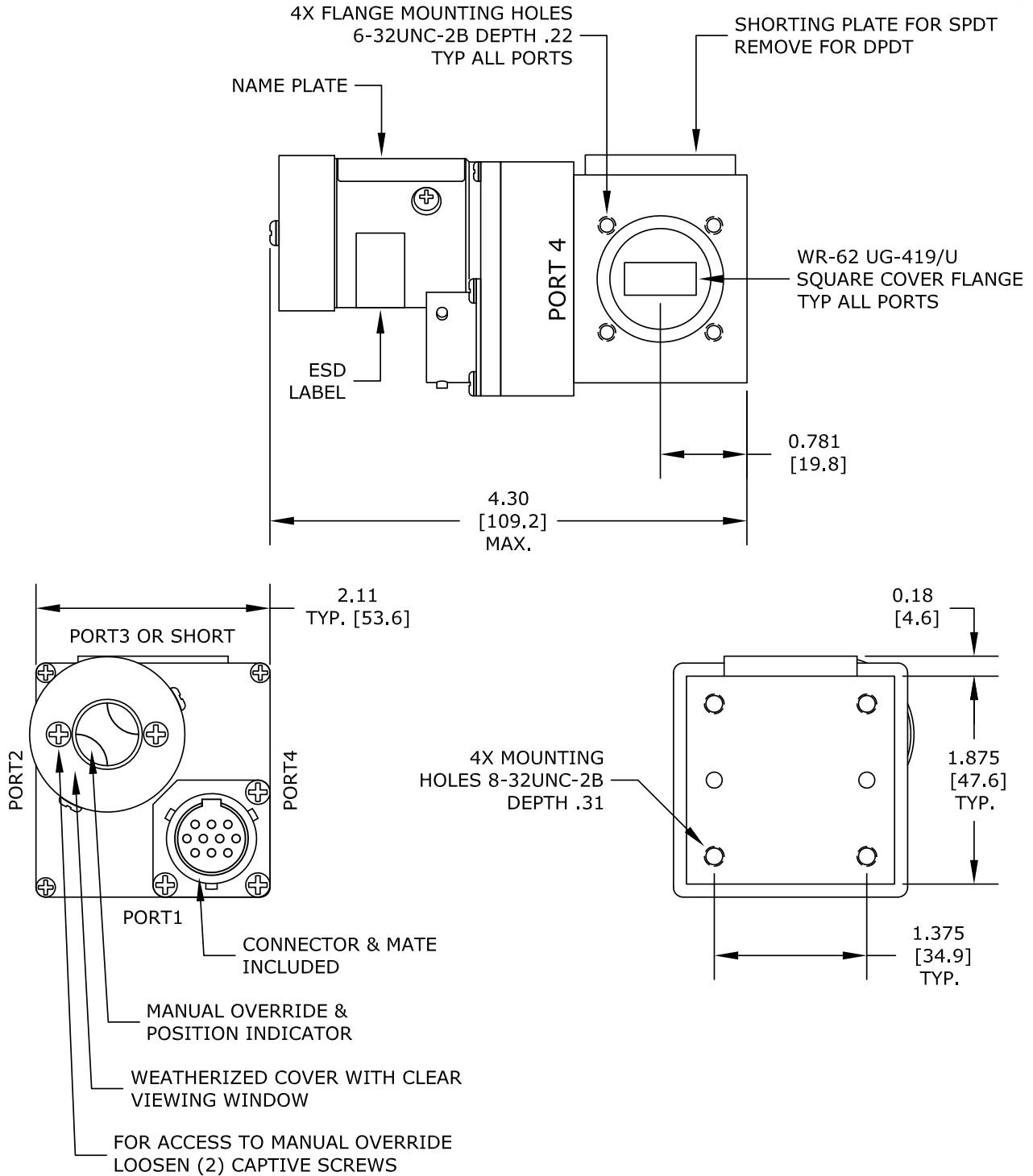
For additional information on this product, please click the following link: [WR-62 Waveguide Electromechanical Relay Latching Switch SPDT 18 GHz Max Frequency, 2,000 Watts Ku Band UG-419/U Square Cover Flange FMWGS6009](https://www.fairviewmicrowave.com/wr-62-waveguide-electromechanical-relay-latching-switch-spdt-18-ghz-fm-wgs6009)

URL: <https://www.fairviewmicrowave.com/wr-62-waveguide-electromechanical-relay-latching-switch-spdt-18-ghz-fm-wgs6009-p.aspx>

The information contained within this document is accurate to the best of our knowledge and representative of the part described herein. It may be necessary to make modifications to the part and/or the documentation of the part in order to implement improvements. Fairview Microwave reserves the right to make such changes as required. Unless otherwise stated, all specifications are nominal. Fairview Microwave does not make any representation or warranty regarding the suitability of the part described herein for any particular purpose, and Fairview Microwave does not assume liability arising out of the use of any part or document.

FMWGS6009 CAD Drawing

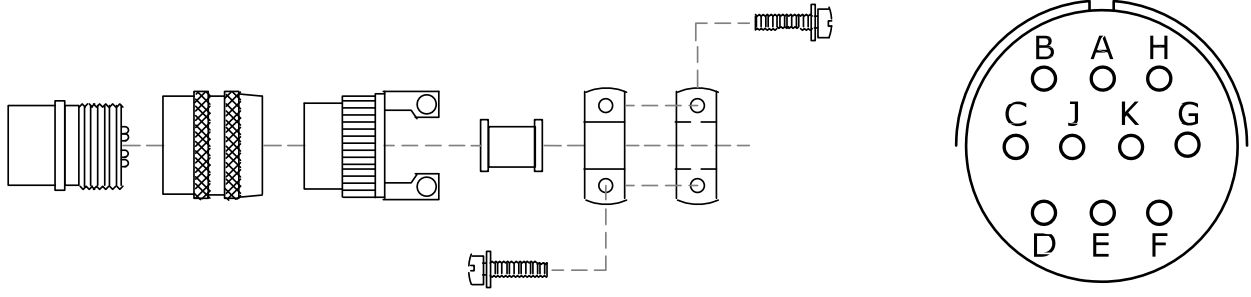
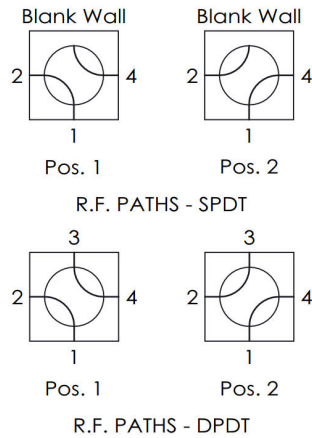
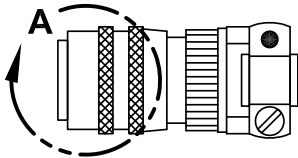
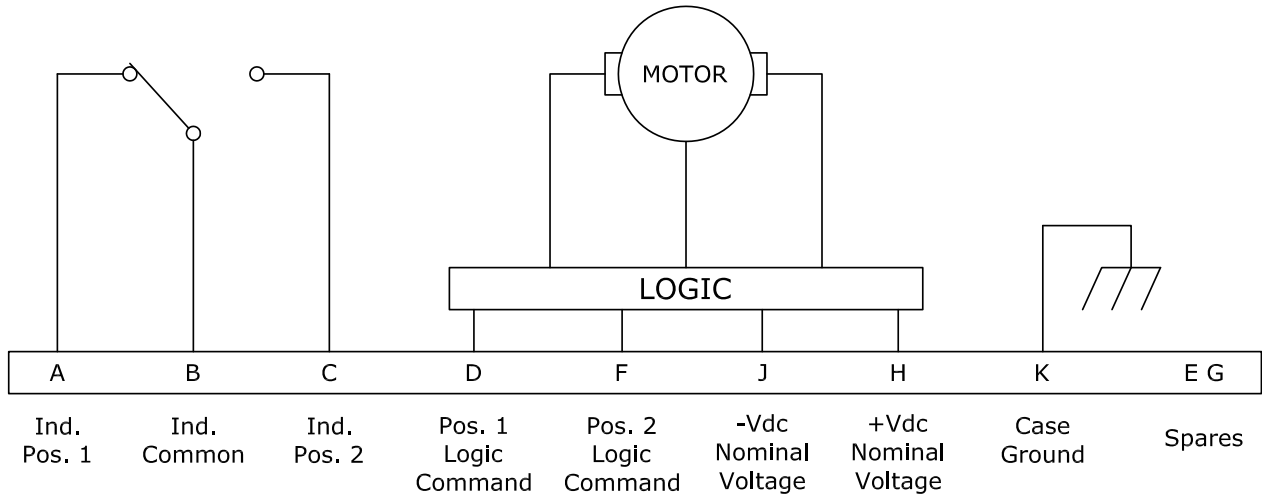
WR-62 Waveguide Electromechanical Relay Latching Switch SPDT 18 GHz Max Frequency, 2,000 Watts Ku Band UG-419/U Square Cover Flange



FAIRVIEW MICROWAVE INC. ALLEN, TX 75013 WWW.FAIRVIEWMICROWAVE.COM		NOTES: 1. UNLESS OTHERWISE SPECIFIED ALL DIMENSIONS ARE NOMINAL. 2. ALL SPECIFICATIONS ARE SUBJECT TO CHANGE WITHOUT NOTICE AT ANY TIME. 3. DIMENSIONS ARE IN INCHES [mm].		
TITLE	DWG NO	FMWGS6009		CAGE CODE
				3FKR5
	CAD FILE	012417	SHEET	SCALE N/A
				SIZE A
				2233

FMWGS6009 CAD Drawing

WR-62 Waveguide Electromechanical Relay Latching Switch SPDT 18 GHz Max Frequency, 2,000 Watts Ku Band UG-419/U Square Cover Flange



View A

FAIRVIEW MICROWAVE INC. ALLEN, TX 75013 WWW.FAIRVIEWMICROWAVE.COM		NOTES: 1. UNLESS OTHERWISE SPECIFIED ALL DIMENSIONS ARE NOMINAL. 2. ALL SPECIFICATIONS ARE SUBJECT TO CHANGE WITHOUT NOTICE AT ANY TIME. 3. DIMENSIONS ARE IN INCHES [mm].			
TITLE	DWG NO	FMWGS6009		CAGE CODE 3FKR5	
	CAD FILE	012417	SHEET	SCALE	N/A SIZE A 2233