

## WR-112 Waveguide Electromechanical Relay Failsafe, X Band Switch SPDT/DPDT 10 GHz Max Freq., 7,000 Watts CPR Flat, 28V, TTL, Indicators

The FMWGS6071 WR112 waveguide electromechanical switch operates across a wide frequency range from 7.05 to 10 GHz and is configured for single pole double throw (SPDT) operation. A shorting plate on port 3 can be removed for optional double pole double throw (DPDT) operation. This innovative design features a failsafe actuator with TTL logic control, and a patented motor drive with arc suppression. The motor drive housing supports a viewable position indicator window and a cover that can be removed for manual override access. Impressive performance includes 0.04 dB insertion loss, 88 dB Isolation and 1.07:1 VSWR. The design operates across a temperature range of -40°C to +85°C, requires +28Vdc nominal bias voltage, and has an input power rating of up to 7 kW CW maximum, and an unpressurized peak power rating up to 202 kW. Operating life of 250K cycles minimum. The waveguide ports have CPR Flat flanges. The rugged package design is fully weatherized for up to 100% humidity exposure and supports a quick connect circular 6 pin MIL-SPEC DC bias connector with mate included.

### Electrical Specifications

Switch Type	SPDT/DPDT
Actuator Type	Failsafe
Actuator Options	TTL Logic, Window Indicator, Manual Override
TTL Control	on: 2.4 to 5.5 Volts off: 0 to 0.8 Volts
TTL Control Current	5 mA at 5.5 Volts 5 mA at 0.8 Volts

Description	Min	Typ	Max	Units
Frequency Range	7.05		10	GHz
Impedance		50		Ohms
Operating Voltage	25.2	28	30.8	Volts
Actuating Current @ 28 Volts		140	150	mA
VSWR		1.07:1	1.1:1	
Insertion Loss		0.04	0.05	dB
Isolation	80	88		dB
Switching Time		<100		ms
Input Power (CW)			7	kWatts
Input Power (Peak/Unpressurized)			202	kWatts

#### Electrical Specification Notes:

Active logic switch command duration must be maintained to keep switch in energized position.

Maximum switching rate not to exceed 30 per minute



### Features:

- 7.05 to 10 GHz SPDT Waveguide Switch
- Optional DPDT Configuration
- WR112 Waveguide with CPR Flat Flanges
- Failsafe Actuator and Position Indicator
- Insertion Loss: 0.04 dB typ
- Isolation: 88 dB typ
- Switching Time: <100 msec typ
- +28 Vdc Nominal Voltage
- Input Power Rating up to 7 kW CW max
- Unpressurized Peak Power Rating up to 202 kW
- Manual Override Access
- Fully Weatherized Package
- Quick Connect Circular DC Connector with Mate
- -40°C to +85°C Operating Temperature

### Applications:

- Electronic Warfare
- Electronic Countermeasures
- Microwave Radio
- VSAT
- Radar
- Space Systems
- Test Instrumentation
- Research and Development

Fairview Microwave  
301 Leora Ln., Suite 100  
Lewisville, TX 75056  
Tel: 1-800-715-4396 / (972) 649-6678  
Fax: (972) 649-6689  
[www.fairviewmicrowave.com](http://www.fairviewmicrowave.com)  
[sales@fairviewmicrowave.com](mailto:sales@fairviewmicrowave.com)

**Mechanical Specifications**

**Size**

Length	2.25 in [57.15 mm]
Width/Diameter	2.43 in [61.72 mm]
Height	4.85 in [123.19 mm]
Weight	1.44 lbs [653.17 g]
Operating Life	250,000 Cycles
Operating Pressure	30 psig

**Configuration**

Waveguide Size	WR-112
Flange Type	CPR Flat
Body Material and Plating	Aluminum, Black
Body Plating Specification	MIL-DTL-5541

**Environmental Specifications**

**Temperature**

Operating Range	-40 to +85 deg C
Storage Range	-55 to +100 deg C

Humidity 0 to 100% Fully Weatherized IAW IP67

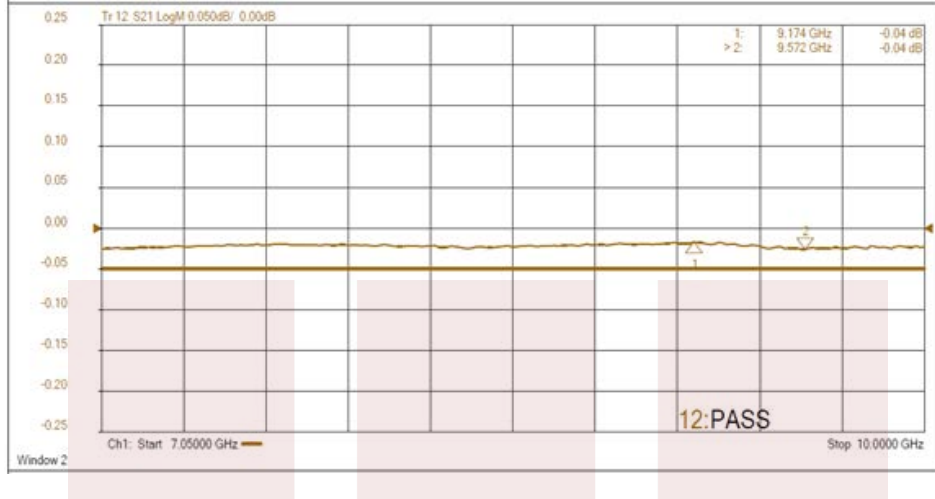
**Compliance Certifications** (see [product page](#) for current document)

**Plotted and Other Data**

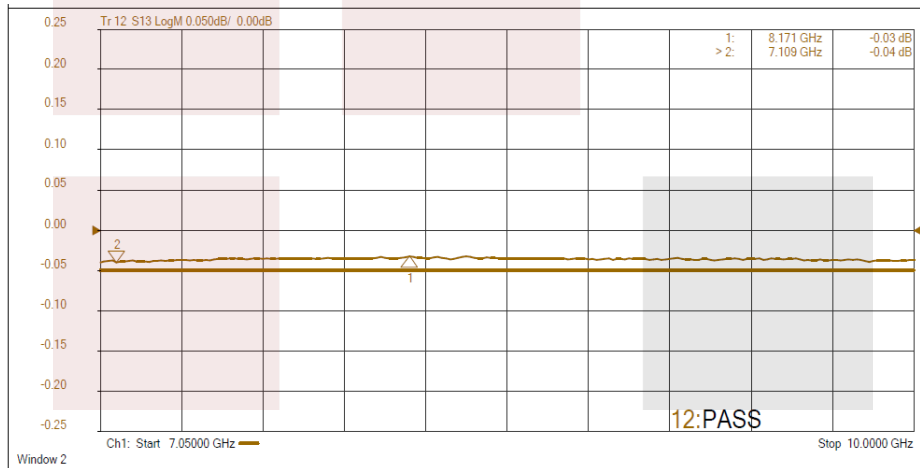
Notes:

**Typical Performance Data**

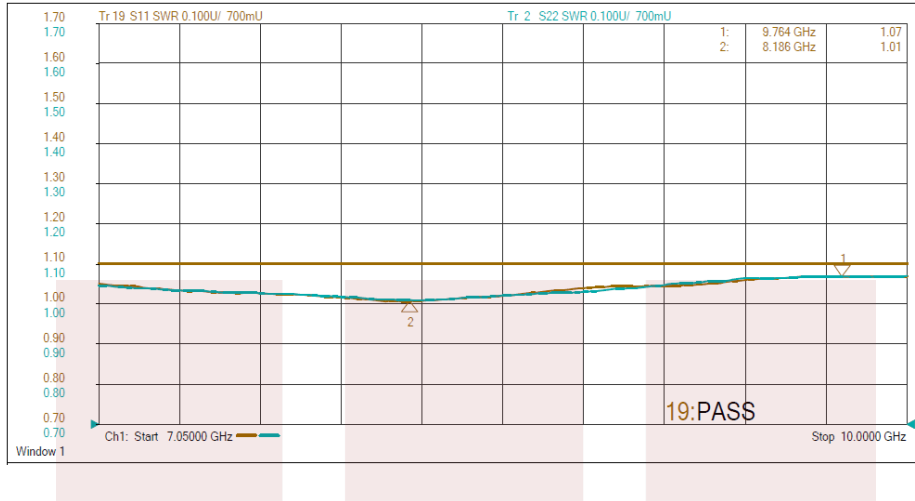
**Typical (Position 1) Insertion Loss**



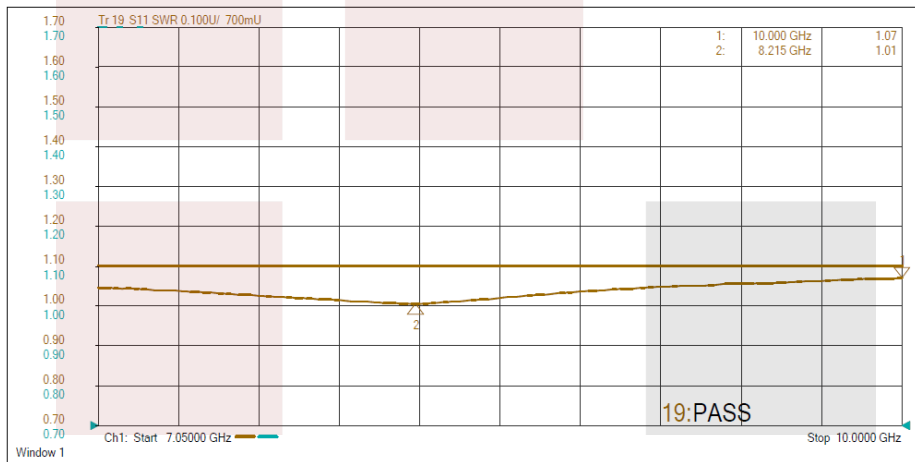
**Typical (Position 2) Insertion Loss**



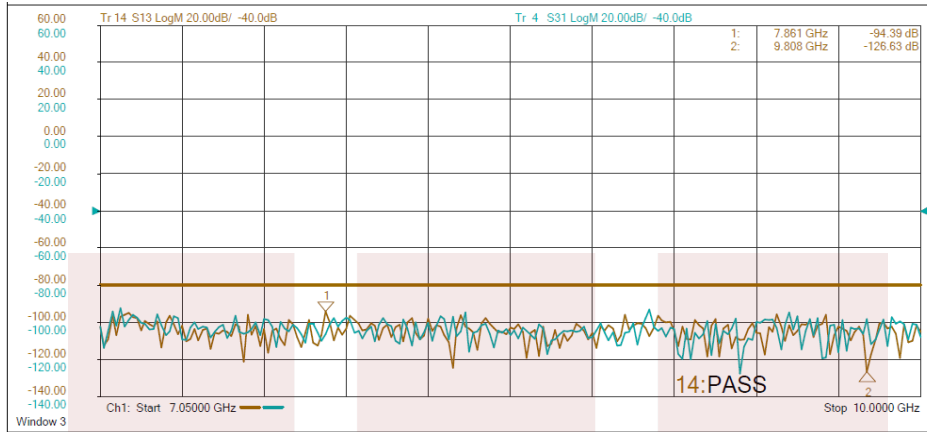
**Typical (Position 1)**  
**VSWR**



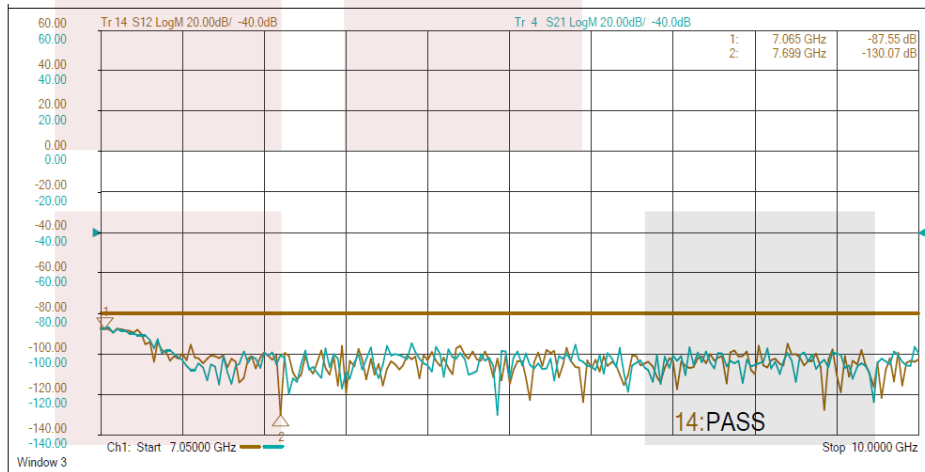
**Typical (Position 2)**  
**VSWR**



**Typical (Position 1)**  
**Isolation**



**Typical (Position 2)**  
**Isolation**

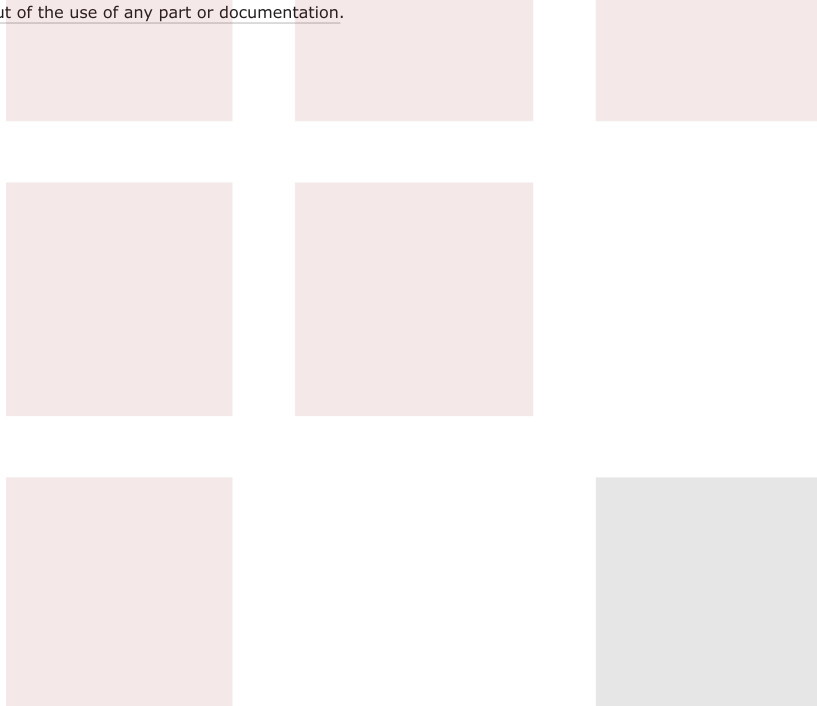


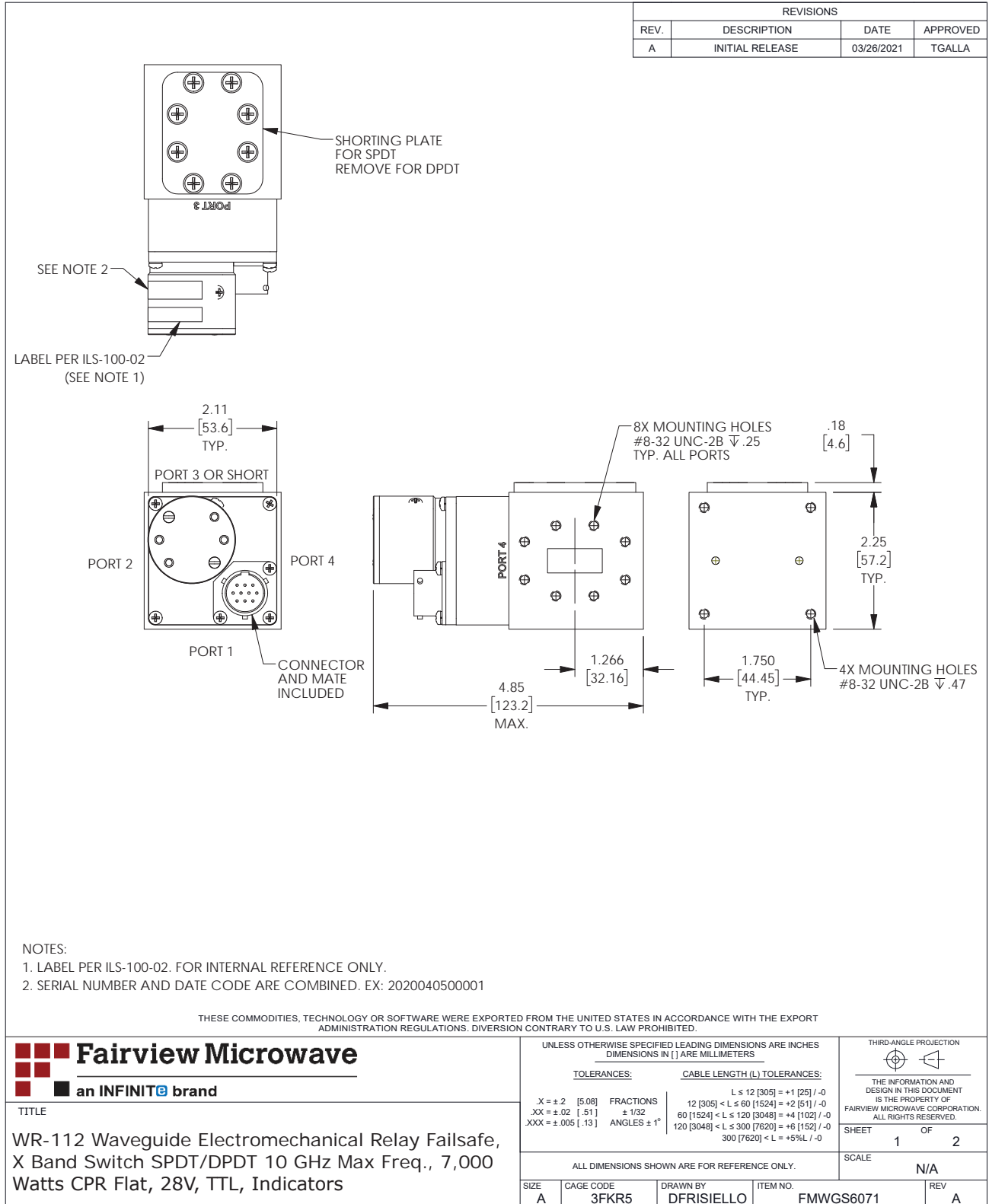
WR-112 Waveguide Electromechanical Relay Failsafe, X Band Switch SPDT/DPDT 10 GHz Max Freq., 7,000 Watts CPR Flat, 28V, TTL, Indicators from Fairview Microwave is in-stock and available to ship same-day. All of our RF/microwave products are available off-the-shelf from our ISO 9001:2008 certified facilities in Lewisville, Texas. Fairview Microwave is RF on-demand.

For additional information on this product, please click the following link: [WR-112 Waveguide Electromechanical Relay Failsafe, X Band Switch SPDT/DPDT 10 GHz Max Freq., 7,000 Watts CPR Flat, 28V, TTL, Indicators FMWGS6071](#)

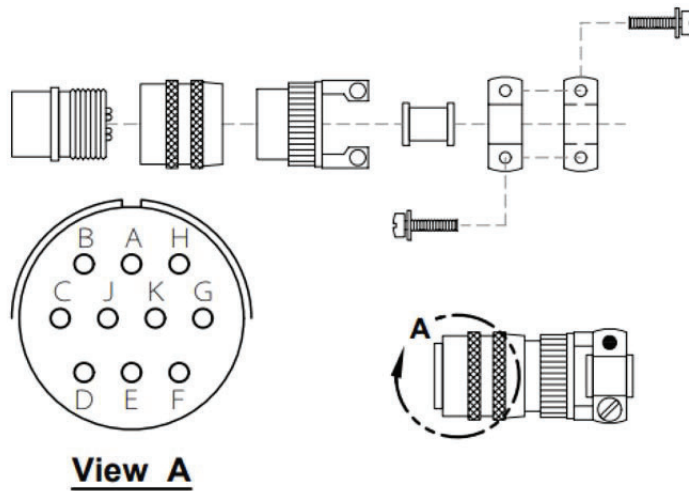
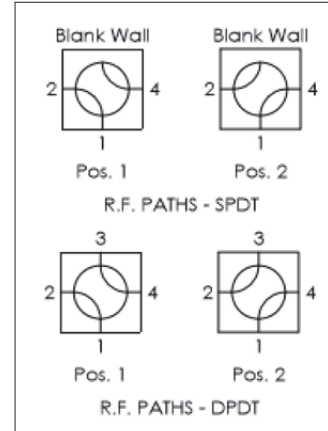
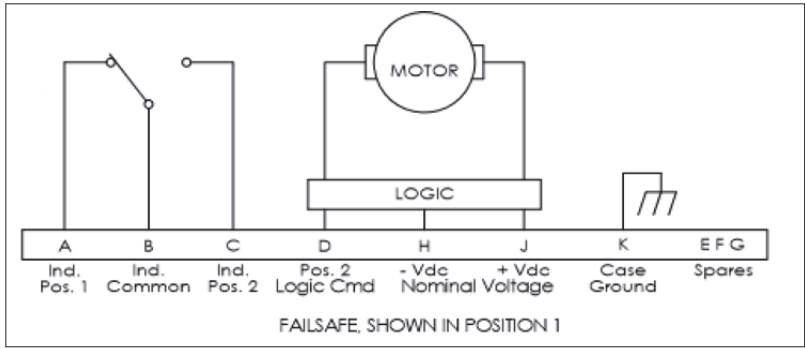
URL: <https://www.fairviewmicrowave.com/wr-112-waveguide-electromechanical-relay-failsafe-switch-spdt-dpdt-10-ghz-fmwgs6071-p.aspx>

The information contained in this document is accurate to the best of our knowledge and representative of the part described herein. It may be necessary to make modifications to the part and/or the documentation of the part, in order to implement improvements. Fairview Microwave reserves the right to make such changes as required. Unless otherwise stated, all specifications are nominal. Fairview Microwave does not make any representation or warranty regarding the suitability of the part described herein for any particular purpose, and Fairview Microwave does not assume any liability arising out of the use of any part or documentation.





T-Rev.D



THESE COMMODITIES, TECHNOLOGY OR SOFTWARE WERE EXPORTED FROM THE UNITED STATES IN ACCORDANCE WITH THE EXPORT ADMINISTRATION REGULATIONS. DIVERSION CONTRARY TO U.S. LAW PROHIBITED.

TITLE  
WR-112 Waveguide Electromechanical Relay Failsafe,  
X Band Switch SPDT/DPDT 10 GHz Max Freq., 7,000  
Watts CPR Flat, 28V, TTL, Indicators

UNLESS OTHERWISE SPECIFIED LEADING DIMENSIONS ARE INCHES  
DIMENSIONS IN [ ] ARE MILLIMETERS

TOLERANCES:		CABLE LENGTH (L) TOLERANCES:	
X = ± 2 [5.08]	FRACTIONS ± 1/32	L ≤ 12 [305]	= +1 [25] / -0
.XX = ± 0.02 [ .51]	ANGLES ± 1°	12 [305] < L ≤ 60 [1524]	= +2 [51] / -0
XXX = ± 0.005 [ .13]		60 [1524] < L ≤ 120 [3048]	= +4 [102] / -0
		120 [3048] < L ≤ 300 [7620]	= +6 [152] / -0
		300 [7620] < L	= +5%L / -0

THIRD-ANGLE PROJECTION  
THE INFORMATION AND DESIGN IN THIS DOCUMENT IS THE PROPERTY OF FAIRVIEW MICROWAVE CORPORATION. ALL RIGHTS RESERVED.

ALL DIMENSIONS SHOWN ARE FOR REFERENCE ONLY.				SHEET 2 OF 2
SCALE N/A	SIZE A	CAGE CODE 3FKR5	DRAWN BY DFRISIELLO	ITEM NO. FMWGS6071
				REV A

T-Rev.D