

40 dB WRD-750 Double Ridge Waveguide Broad-wall Coupler, SMA Female Coupled Port, 7.5 GHz to 18 GHz in Brass

The FMWRD750CP01-40 is a WRD-750 Directional Broadwall double ridge waveguide coupler with SMA female coupled port that operates in the frequency range of 7.5 to 18 GHz. This Waveguide component has a maximum VSWR of 1.5:1. These designs are made of painted copper alloy and incorporate a broad wall configuration that result in a mid-band nominal coupling value of 10, 20, 30, 40 or 50 dB. Common applications for this component would be where power measurements are required within a system for measuring/sampling power or frequency monitoring with minimal signal loss to the main transmission line. Fairview Microwave offers a complete family of waveguide Crossguide and Broadwall couplers that are in-stock and ship same day.

Electrical Specifications

Description	Min	Typ	Max	Units
Frequency Range	7.5		18	GHz
Impedance		50		Ohms
Coupler				
Nominal Coupling Level		40		dB
Directivity	20			dB
Insertion Loss			0.3	dB
Main Line VSWR			1.25:1	
Secondary Line VSWR			1.5:1	
Coupling Flatness			±2	dB
Input Power (CW)			400	Watts
Input Power Peak			3	kWatts

Mechanical Specifications

Size	
Length	10.63 in [270 mm]
Width	1.38 in [35.05 mm]
Height	1.38 in [35.05 mm]
Weight	2.53 lbs [1.15 kg]

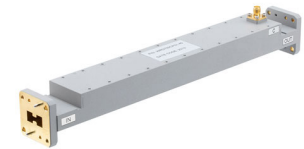
Interface	
Waveguide Size	WRD-750
Flange Type	Cover
RF Connector Type	SMA Female
Coupler Body Material and Plating	Brass, Gray

Environmental Specifications

Compliance Certifications (see [product page](#) for current document)

Plotted and Other Data

Notes:



Features:

- Three Port Broadwall Waveguide Coupler
- 40±2 dB Nominal Coupling Level
- Integrated SMA Female Connector coupled port
- 7.5 GHz to 18 GHz Frequency Range
- Main Line VSWR < 1.25:1
- Max Power 400W (CW)

Applications:

- Test Benches
- Radar
- Satellite
- Microwave Radio
- Attenuation Measurements
- Power Measurements
- Source Leveling

Fairview Microwave
 301 Leora Ln., Suite 100
 Lewisville, TX 75056
 Tel: 1-800-715-4396 / (972) 649-6678
 Fax: (972) 649-6689
www.fairviewmicrowave.com
sales@fairviewmicrowave.com

40 dB WRD-750 Double Ridge Waveguide Broadwall Coupler, SMA Female Coupled Port, 7.5 GHz to 18 GHz in Brass from Fairview Microwave is in-stock and available to ship same-day. All of our RF/microwave products are available off-the-shelf from our ISO 9001:2008 certified facilities in Lewisville, Texas. Fairview Microwave is RF on-demand.

For additional information on this product, please click the following link: [40 dB WRD-750 Double Ridge Waveguide Broadwall Coupler, SMA Female Coupled Port, 7.5 GHz to 18 GHz in Brass FMWRD750CP01-40](#)

URL: <https://www.fairviewmicrowave.com/40db-wrd750-waveguide-broadwall-coupler-18ghz-fmwr750cp01-40-p.aspx>

The information contained in this document is accurate to the best of our knowledge and representative of the part described herein. It may be necessary to make modifications to the part and/or the documentation of the part, in order to implement improvements. Fairview Microwave reserves the right to make such changes as required. Unless otherwise stated, all specifications are nominal. Fairview Microwave does not make any representation or warranty regarding the suitability of the part described herein for any particular purpose, and Fairview Microwave does not assume any liability arising out of the use of any part or documentation.



