

SMA Directional Coupler 30 dB Coupled Port From 5 MHz to 1,000 MHz Rated To 3 Watts

This RF coupler from Fairview Microwave is just part of a wide selection of coaxial coupler products supplied for laboratory test and measurement, defense / military, antenna and other signal related uses. Our radio frequency coupler is directional and built with SMA ports. The Fairview Microwave directional coupler design uses SMA ports that have a gender of female and the impedance is 50 Ohm.

Directional coupler design for part number MC51008-30 from Fairview Microwave is rated for a 5 MHz minimum frequency and a 1000 MHz maximum frequency. Our directional coupler is designed with a 30 dB coupling value and a directional dB coupler directivity. This female SMA directional coupler is rated for a 0 dB maximum insertion loss and a 3 watts maximum input power.

Fairview is where to buy a directional coupler with SMA that is rated for a 0 dB maximum insertion loss and a 1.5 maximum VSWR. More female SMA coupler specs for this radio frequency component can be found on its directional coupler PDF specifications datasheet above. MC51008-30 directional 30 dB SMA coupler is part of over a million RF, microwave and millimeter wave components supplied by Fairview and this component can be bought and then shipped worldwide the same-day as with Fairview Microwave's other in-stock RF parts.

Electrical Specifications

| Description | Min | Typ | Max | Units |
|-------------------|-----|---------|-------|-------|
| Frequency Range | 5 | | 1,000 | MHz |
| Impedance | | 50 | | Ohms |
| Coupling | | 30 ±0.5 | | dB |
| Freq. Sensitivity | | | ±0.5 | dB |
| Main Line Loss | | | 1.2 | dB |
| Directivity | 20 | | | dB |
| Main Line VSWR | | | 1.3:1 | |
| Input Power (CW) | | | 3 | Watts |

Mechanical Specifications

Size

| | |
|------------|---------------------|
| Length | 0.9 in [22.86 mm] |
| Width/Dia. | 0.9 in [22.86 mm] |
| Height | 0.5 in [12.7 mm] |
| Weight | 0.049 lbs [22.23 g] |

Configuration

| | |
|--------------------|------------|
| Input Connector | SMA Female |
| Output Connector | SMA Female |
| Coupled Connectors | SMA Female |

Environmental Specifications

Temperature

| | |
|-----------------|------------------|
| Operating Range | +80 to -25 deg C |
|-----------------|------------------|



Features:

- Directional Coupler
- 5 MHz to 1,000 MHz Frequency Range
- Coupling 30±0.5 dB
- Directivity > 20 dB
- Max Power 3W (CW)

Applications:

- Test and Measurement
- Military Communications
- Commercial Communications
- Wireless Communications
- SATCOM

Fairview Microwave
 301 Leora Ln., Suite 100
 Lewisville, TX 75056
 Tel: 1-800-715-4396 / (972) 649-6678
 Fax: (972) 649-6689
www.fairviewmicrowave.com
sales@fairviewmicrowave.com

Compliance Certifications (see [product page](#) for current document)

Plotted and Other Data

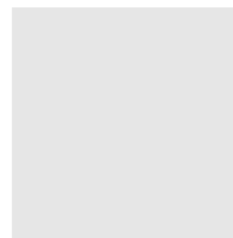
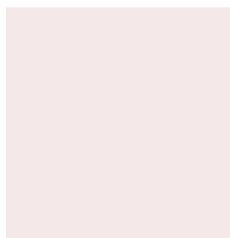
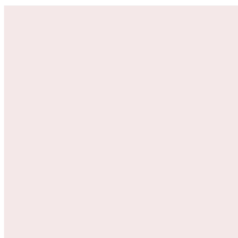
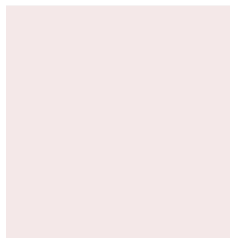
Notes:

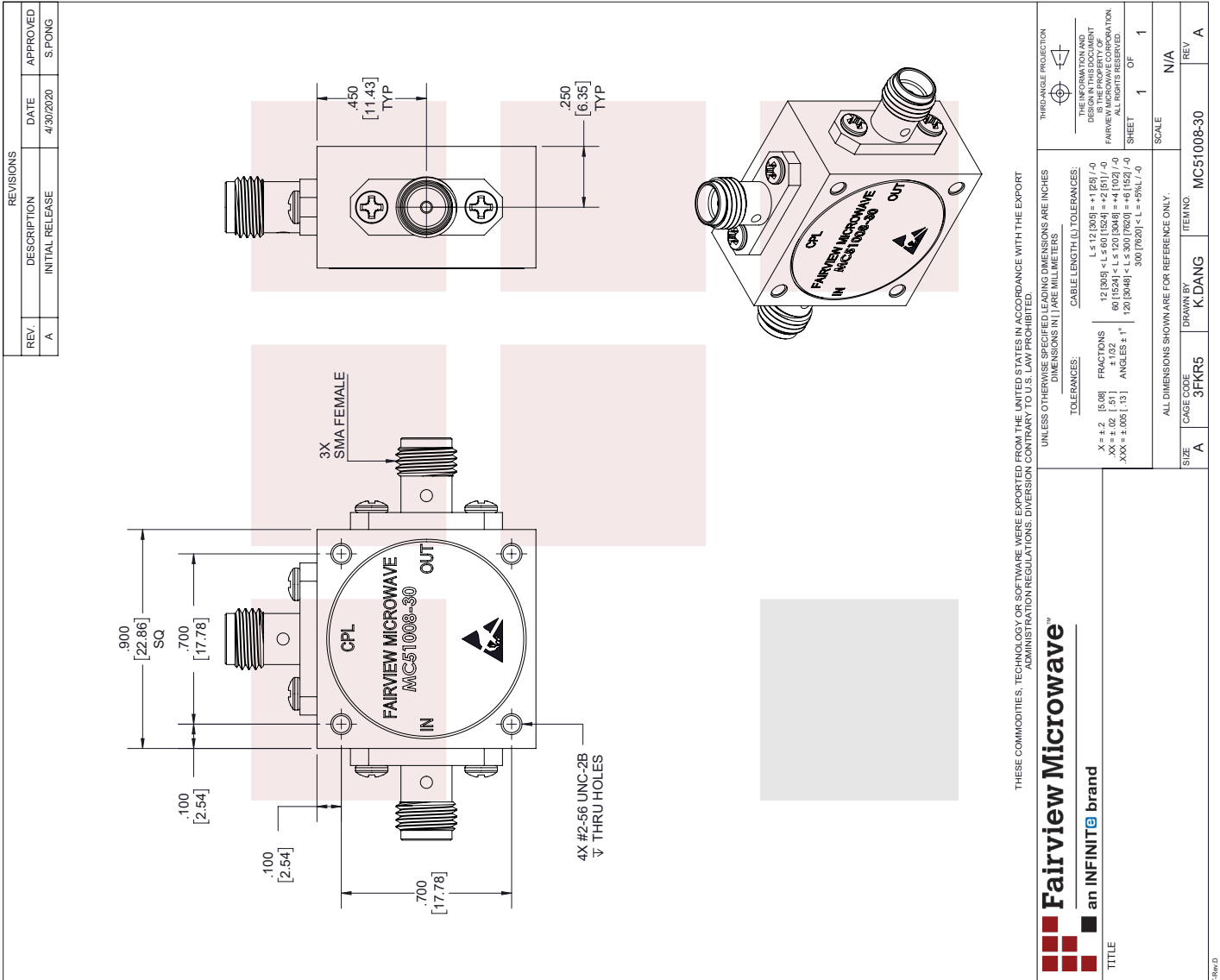
SMA Directional Coupler 30 dB Coupled Port From 5 MHz to 1,000 MHz Rated To 3 Watts from Fairview Microwave is in-stock and available to ship same-day. All of our RF/microwave products are available off-the-shelf from our ISO 9001:2008 certified facilities in Lewisville, Texas. Fairview Microwave is RF on-demand.

For additional information on this product, please click the following link: [SMA Directional Coupler 30 dB Coupled Port From 5 MHz to 1,000 MHz Rated To 3 Watts MC51008-30](#)

URL: <https://www.fairviewmicrowave.com/sma-directional-coupler-30-db-1000-mhz-2-watts-mc51008-30-p.aspx>

The information contained in this document is accurate to the best of our knowledge and representative of the part described herein. It may be necessary to make modifications to the part and/or the documentation of the part, in order to implement improvements. Fairview Microwave reserves the right to make such changes as required. Unless otherwise stated, all specifications are nominal. Fairview Microwave does not make any representation or warranty regarding the suitability of the part described herein for any particular purpose, and Fairview Microwave does not assume any liability arising out of the use of any part or documentation.





SMA Directional Coupler 30 dB Coupled Port From 5 MHz to 1,000 MHz Rated To 3 Watts