

SMA POWER DIVIDER 2-WAY 2-18 GHZ

MP0218-2

SPECIFICATIONS

ELECTRICAL:

FREQUENCY: 2-18 GHZ
 VSWR 1.50:1 MAX
 POWER CW: 20 WATTS INTO 1.2:1 VSWR;
 ISOLATION: 16 DB MIN
 INSERTION LOSS: 4.1 DB (3+1.1)
 AMPLITUDE BALANCE: 0.4DB MAX
 PHASE BALANCE: 5 DEGREES MAX
 IMPEDANCE: 50 OHMS

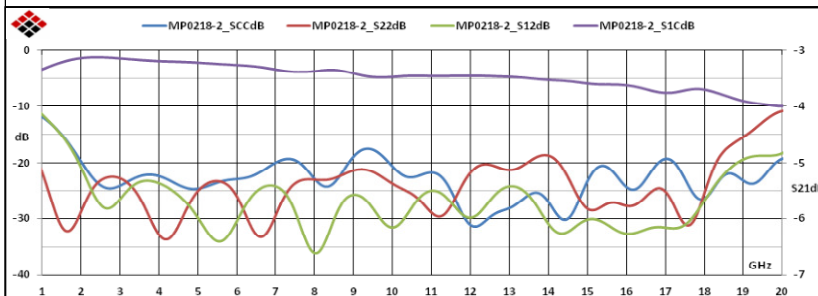
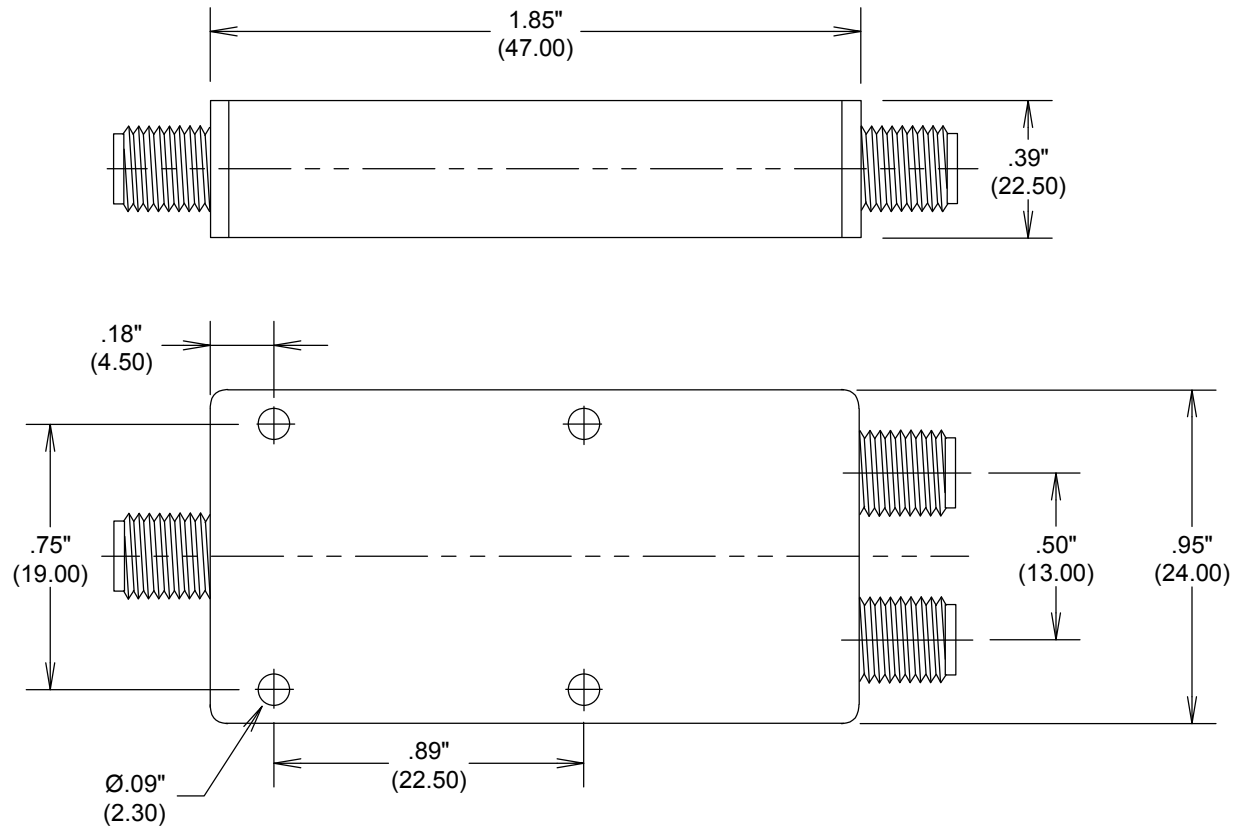
MECHANICAL

CONNECTORS: BRASS
 HOUSING: AL, PAINTED GRAY

ENVIRONMENTAL:

TEMP: -55°C TO +125°C

ROHS COMPLIANT



ALL DIMENSIONS IN inches(MM) Typical

FAIRVIEW MICROWAVE INC.

ALLEN, TX 75013 WWW.FAIRVIEWMICROWAVE.COM

TITLE

SMA POWER DIVIDER 2-WAY 2-18 GHZ

SIZE CAGE CODE DWG NO

A

3FKR5

MP0218-2

REV

B

SCALE

SHEET