

SMA POWER DIVIDER 8-WAY 700-2700 MHZ

MP8213-8

SPECIFICATIONS

ELECTRICAL:

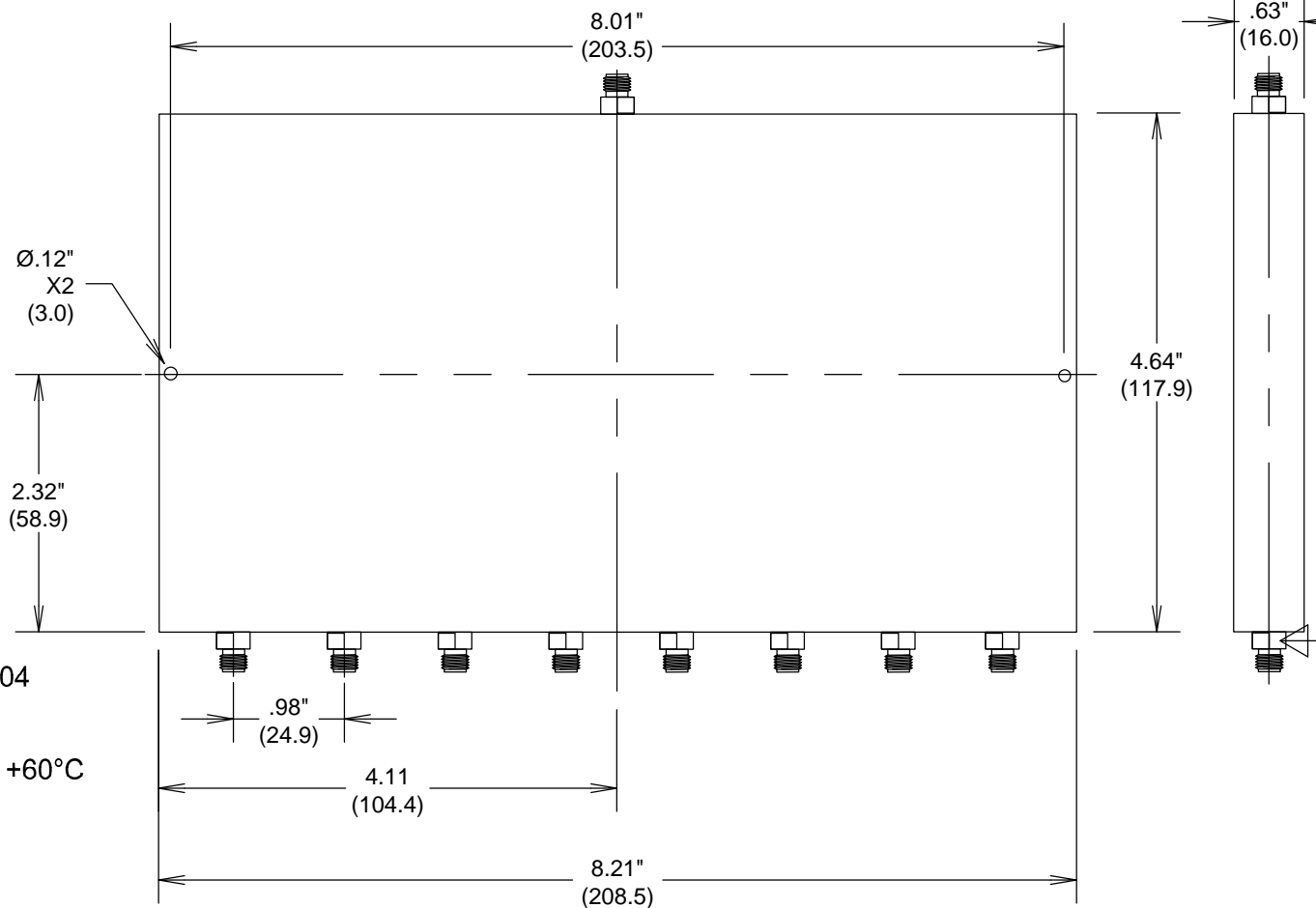
FREQUENCY: 700-2700 MHZ
 VSWR 1.40:1 MAX
 POWER CW: 5 WATTS
 ISOLATION: 20 DB MIN
 INSERTION LOSS: 10.0 DB (9+1.0)
 AMPLITUDE BALANCE: ± 0.8 DB MAX
 IMPEDANCE: 50 OHMS

MATERIALS:

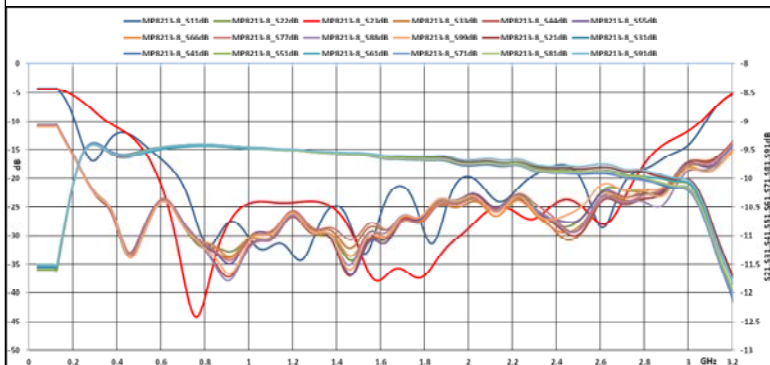
BODY: Au PLATED BRASS
 CONTACTS: BeCu
 CONTACT PLATING: Au PER MIL-G-45204
 HOUSING FINISH: PASS. ALUMINUM

OPERATING TEMPERATURE: -30°C TO +60°C

ROHS COMPLIANT



MEASUREMENTS BELOW ARE TYPICAL



ALL DIMENSIONS IN inches(MM) Typical

FAIRVIEW MICROWAVE INC.

ALLEN, TX 75013 WWW.FAIRVIEWMICROWAVE.COM

TITLE

SMA POWER DIVIDER 8-WAY 700-2700 MHZ

SIZE	CAGE CODE	DWG NO	REV
A	3FKR5	MP8213-8	--
SCALE	SHEET		