

## RF Load 100 Watts High Power To 8 GHz Conduction Cooled Body Black Anodized Aluminum Heatsink SMA Female

High power RF termination (also called RF load or dummy load) SAT8S-100F from Fairview Microwave operates from DC to 8 GHz and handles up to 100 Watts (CW). This SMA termination (or load) has a female gender. SAT8S-100F SMA load termination offers 1.5:1 max VSWR. This high power 100W SMA terminator from Fairview Microwave has a heatsink body which is designed to provide adequate heat dissipation within its full frequency of operation.

RF terminations / loads are critical passive components in many RF, microwave and millimeter wave systems where signal reflection from unused ports can reduce the signal integrity and can potentially damage the device. By terminating an unused port with a matched load (dummy load), the incident energy will be absorbed with minimal reflection. These radio frequency termination components are commonly used to terminate devices such as couplers, circulators, and switches. Loads / terminations are also widely used in measurement systems to ensure accurate results. Fairview offers a large selection of in-stock RF, microwave and millimeter wave terminations up to 65 GHz with great performance over the entire operating range and with power handling capabilities up to 800 Watts (CW).

### Electrical Specifications

Description	Min	Typ	Max	Units
Frequency Range	DC		8	GHz
Impedance		50		Ohms
VSWR			1.5:1	
Input Power (CW)			100	Watts
Input Power (Peak)			2	kWatts

### Performance by Frequency

Description	F1	F2	F3	F4	F5	Units
Freq. Range	DC-2	2-4	4-6	6-8		GHz
VSWR, Max	1.2:1	1.35:1	1.45:1	1.5:1		

### Mechanical Specifications

Finish Black

#### Configuration

Connector SMA Female  
Connector Specification MIL-STD-348



### Features:

- High Power RF Load
- DC to 8 GHz Frequency Range
- VSWR 1.5:1 Max
- Max Power 100 Watts (CW)
- SMA Female Coaxial Interface

### Applications:

- Wireless
- SatCom
- Radar Systems
- Test and Measurement
- Commercial and Military Communication

Fairview Microwave  
301 Leora Ln., Suite 100  
Lewisville, TX 75056  
Tel: 1-800-715-4396 / (972) 649-6678  
Fax: (972) 649-6689  
[www.fairviewmicrowave.com](http://www.fairviewmicrowave.com)  
[sales@fairviewmicrowave.com](mailto:sales@fairviewmicrowave.com)

**Material Specifications**

Description	Material	Plating
Connector 1 Contact	Beryllium Copper	Gold
Insulation	PTFE	
Outer Conductor	Passivated Stainless Steel	
Body	Passivated Stainless Steel	
Housing	Black Anodized Aluminum Heatsink	

**Environmental Specifications**

**Temperature**

Operating Range -55 to +125 deg C

**Compliance Certifications** (see [product page](#) for current document)

**Plotted and Other Data**

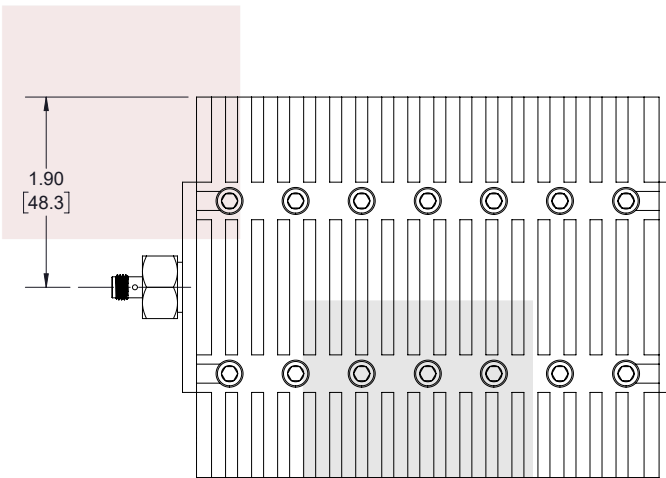
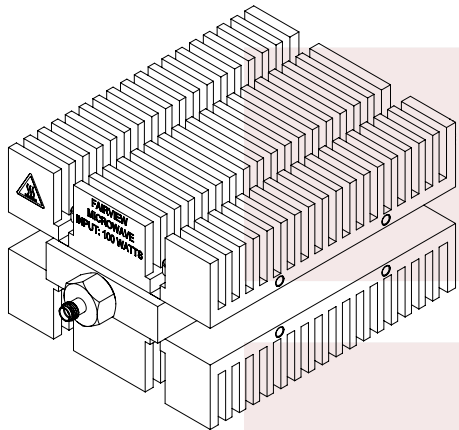
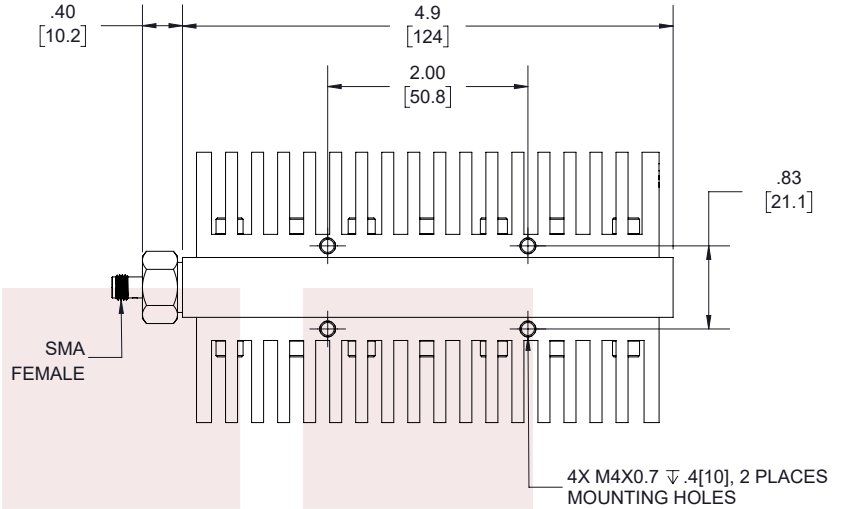
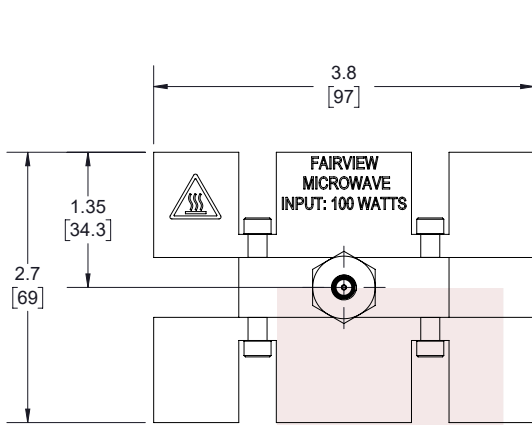
Notes:

RF Load 100 Watts High Power To 8 GHz Conduction Cooled Body Black Anodized Aluminum Heatsink SMA Female from Fairview Microwave is in-stock and available to ship same-day. All of our RF/microwave products are available off-the-shelf from our ISO 9001:2008 certified facilities in Allen, Texas. Fairview Microwave is RF on-demand.

For additional information on this product, please click the following link: [RF Load 100 Watts High Power To 8 GHz Conduction Cooled Body Black Anodized Aluminum Heatsink SMA Female SAT8S-100F](#)

URL: <https://www.fairviewmicrowave.com/rf-load-100-watts-8-ghz-sma-female-sat8s-100f-p.aspx>

The information contained in this document is accurate to the best of our knowledge and representative of the part described herein. It may be necessary to make modifications to the part and/or the documentation of the part, in order to implement improvements. Fairview Microwave reserves the right to make such changes as required. Unless otherwise stated, all specifications are nominal. Fairview Microwave does not make any representation or warranty regarding the suitability of the part described herein for any particular purpose, and Fairview Microwave does not assume any liability arising out of the use of any part or documentation.



**LABEL**

**FAIRVIEW MICROWAVE**  
**SAT8S-100F**  
DIC: XXYY

**STANDARD TOLERANCES**  
.X ±0.2  
.XX ±0.01  
.XXX ±0.005

\*STANDARD TOLERANCES APPLY ONLY TO DIMENSIONS IN INCHES

		<p>NOTES: 1. UNLESS OTHERWISE SPECIFIED ALL DIMENSIONS ARE NOMINAL. 2. ALL SPECIFICATIONS ARE SUBJECT TO CHANGE WITHOUT NOTICE AT ANY TIME. 3. DIMENSIONS ARE IN INCHES [mm].</p>					
TITLE		DWG NO			CAGE CODE		
RF Load 100 Watts High Power To 8 GHz Conduction Cooled Body Black Anodized Aluminum Heatsink SMA Female		SAT8S-100F			3FKR5		
CAD FILE	01/28/19	SHEET	1 OF 1	SCALE	N/A	SIZE	A 7361