

SMP MALE SMOOTH BORE SHROUD .282 SPACING

SC5312

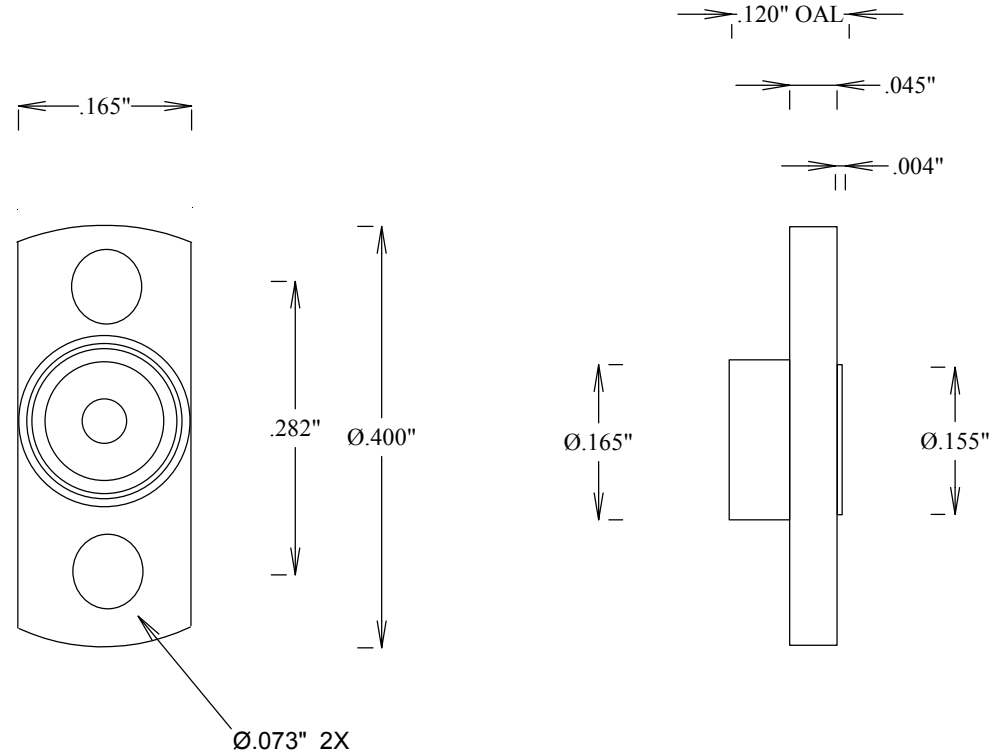
SPECIFICATIONS

ELECTRICAL:

FREQUENCY: 0-40 GHZ
 IMPEDANCE: 50 OHMS
 OP. TEMP RANGE: -55° to +125°C

MECHANICAL:

MATERIAL: PASSIVATED S STEEL
 INTERFACE: SMP DESC 94007
 SMOOTH BORE
 FORCE TO ENGAGE: 2.0 LBS MAX
 FORCE TO DISENGAGE: 0.5 LBS MIN
 ROHS COMPLIANT



FAIRVIEW MICROWAVE INC.

ALLEN, TX 75013 WWW.FAIRVIEWMICROWAVE.COM

TITLE

**SMP MALE SMOOTH BORE
SHROUD .282 SPACING**

SIZE	CAGE CODE	DWG NO	REV
A	3FKR5	SC5312	--
SCALE	SHEET		