

SMP-MALE PCB LIMITED DETENTE

SC5341

SPECIFICATIONS

ELECTRICAL:

FREQUENCY: 0-18 GHZ
 IMPEDANCE: 50 OHMS
 OP. TEMP RANGE: -55C- +155C

MECHANICAL:

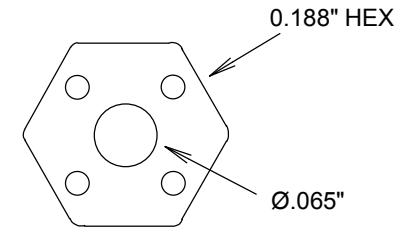
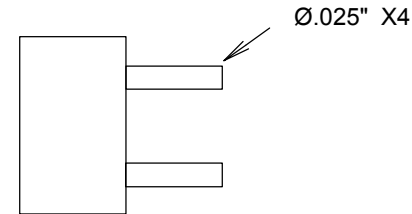
MATERIAL BODY: BeCu
 CENTER CONTACT: BeCu
 PLATING: Au MIL-G-45204
 INSULATOR: TEFLON
 INTERFACE: DESC 94007

LIMITED DETENTE
 FORCE TO ENGAGE: 10 LBS MAX
 FORCE TO DISENGAGE: 2 LBS MIN

.120"

.100" SQ

.100"

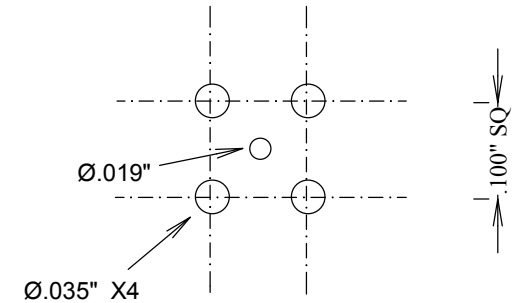
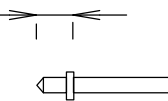


.100"

.050"

Ø.015"

.005"



FAIRVIEW MICROWAVE INC.

ALLEN, TX 75013 WWW.FAIRVIEWMICROWAVE.COM

TITLE

**SMP-MALE PCB
LIMITED DETENTE**

SIZE	CAGE CODE	DWG NO	REV
A	3FKR5	SC5341	A
SCALE		SHEET	