

SMP-MALE PCB R/A LIMITED DETENTE

SC5349

SPECIFICATIONS

ELECTRICAL:

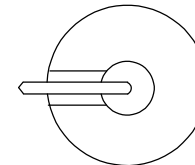
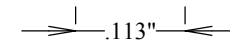
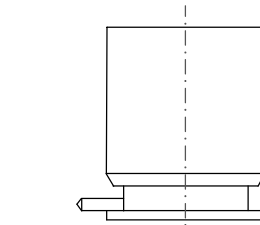
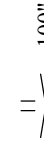
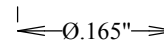
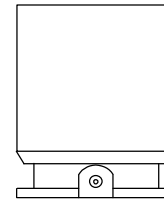
FREQUENCY: 0-18 GHZ
IMPEDANCE: 50 OHMS
OP. TEMP RANGE: -55C- +155C

MECHANICAL:

MATERIAL BODY: BeCu
CENTER CONTACT: BeCu
PLATING: Au MIL-G-45204
INSULATOR: TEFLON
INTERFACE: DESC 94007

LIMITED DETENTE
FORCE TO ENGAGE: 10 LBS MAX
FORCE TO DISENGAGE: 2 LBS MIN

ROHS COMPLIANT



				FAIRVIEW MICROWAVE INC.			
				ALLEN, TX 75013 WWW.FAIRVIEWMICROWAVE.COM			
				TITLE			
				SMP-MALE PCB R/A LIMITED DETENTE			
SIZE	CAGE CODE	DWG NO	REV				
A	3FKR5	SC5349	--				
SCALE				SHEET			

