

**2.92mm Female Bulkhead Precision Connector  
 Clamp/Solder Attachment For RG405 Cable ,  
 .235 inch D Hole**

**Configuration**

Connector 2.92mm Female

**Electrical Specifications\***

Description	Min	Typ	Max	Units
Frequency Range	DC		40	GHz
Impedance		50		Ohms
VSWR			1.35:1	

\* Values at 25°C, sea level

**Mechanical Specifications**

**Size**

Length 0.888 in [22.56 mm]  
 Width/Dia. 0.312 in [7.92 mm]

**Connector**

Type 2.92mm Female  
 Contact Material and Plating Beryllium Copper, Gold  
 Contact Plating Specification 50µ Inches.  
 Outer Conductor Material and Plating Passivated Stainless Steel  
 Outer Conductor Plating Specification SAE-AMS-2700  
 Body Material and Plating Passivated Stainless Steel  
 Body Plating Specification SAE-AMS-2700  
 Dielectric Type PCTFE

**Compliance Certifications** (visit [www.FairviewMicrowave.com](http://www.FairviewMicrowave.com) for current document)

RoHS Compliant Yes



**Features:**

- Specification: IEEE-STD-P287\*
- Interface: RG405
- Attachment: Clamp/Solder
- Design: Precision
- Body Style: Straight
- Mount Method: Bulkhead

Fairview Microwave  
 1130 Junction Dr. #100  
 Allen, TX 75013  
 Tel: 1-800-715-4396 / (972) 649-6678  
 Fax: (972) 649-6689  
[www.fairviewmicrowave.com](http://www.fairviewmicrowave.com)  
[sales@fairviewmicrowave.com](mailto:sales@fairviewmicrowave.com)

**Plotted and Other Data**

Notes:

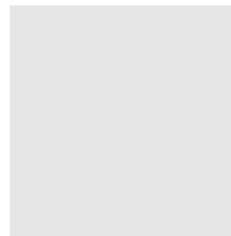
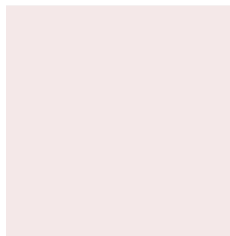
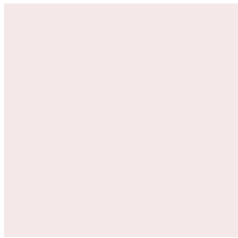
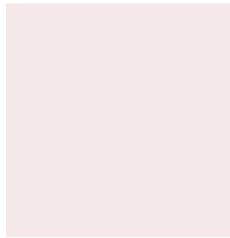
- Values at +25 °C, sea level
- \*Connector Interface in compliance with Figure G.4. Except Conductor Tolerances and Contact Recession.

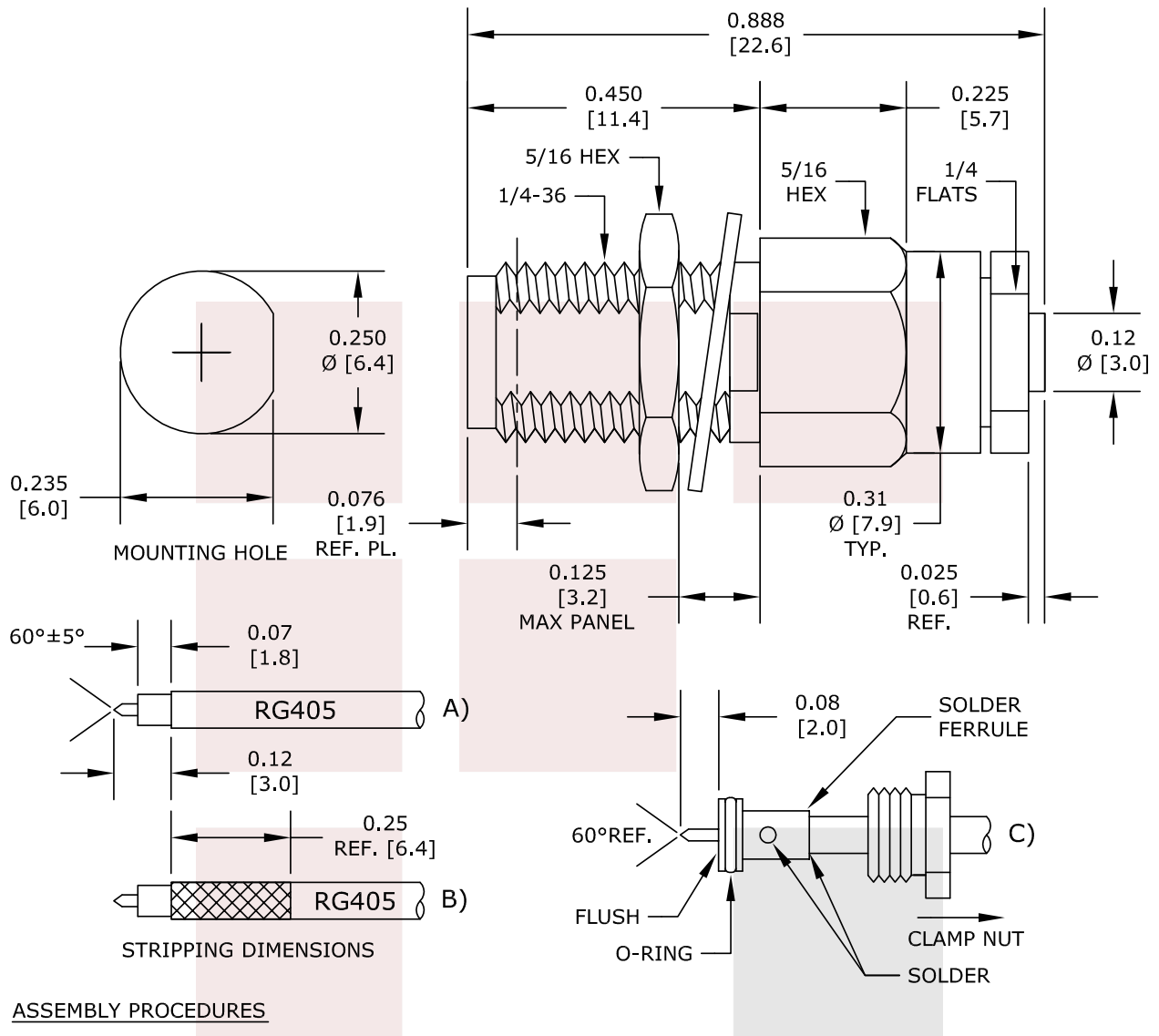
2.92mm Female Bulkhead Precision Connector Clamp/Solder Attachment For RG405 Cable , .235 inch D Hole from Fairview Microwave is in-stock and available to ship same-day. All of our RF/microwave products are available off-the-shelf from our ISO 9001:2008 certified facilities in Allen, Texas. Fairview Microwave is RF on-demand.

For additional information on this product, please click the following link: [2.92mm Female Bulkhead Precision Connector Clamp/Solder Attachment For RG405 Cable , .235 inch D Hole SC5840](#)

URL: <http://www.fairviewmicrowave.com/2.92mm-female-standard-rg405-connector-sc5840-p.aspx>

The information contained in this document is accurate to the best of our knowledge and representative of the part described herein. It may be necessary to make modifications to the part and/or the documentation of the part, in order to implement improvements. Fairview Microwave reserves the right to make such changes as required. Unless otherwise stated, all specifications are nominal. Fairview Microwave does not make any representation or warranty regarding the suitability of the part described herein for any particular purpose, and Fairview Microwave does not assume any liability arising out of the use of any part or documentation.





**ASSEMBLY PROCEDURES**

1. STRIP CABLE AS SHOWN IN (A). DO NOT NICK DIELECTRIC.
2. PRE-TIN CABLE JACKET TO APPROXIMATE DIMENSION AS SHOWN IN (B).
3. INSERT CABLE THRU ADAPTER UNTIL IT BOTTOMS OUT. SOLDER OUTER CONDUCTOR TO ADAPTER & TRIM DIELECTRIC AS SHOWN IN (C).
4. SCREW ASSEMBLY INTO BODY & TIGHTEN NUT.

<b>FAIRVIEW MICROWAVE INC.</b> ALLEN, TX 75013 WWW.FAIRVIEWMICROWAVE.COM		NOTES: 1. UNLESS OTHERWISE SPECIFIED ALL DIMENSIONS ARE NOMINAL. 2. ALL SPECIFICATIONS ARE SUBJECT TO CHANGE WITHOUT NOTICE AT ANY TIME. 3. DIMENSIONS ARE IN INCHES [mm].		
TITLE 2.92mm Female Bulkhead Precision Connector Clamp/ Solder Attachment For RG405 Cable , .235 inch D Hole	DWG NO SC5840	CAGE CODE 3FKR5		
CAD FILE 080814	SHEET	SCALE N/A	SIZE A	150