

MMCX-PLUG RG174 RG316 RA CRIMP

SC9539

SPECIFICATIONS

ELECTRICAL:

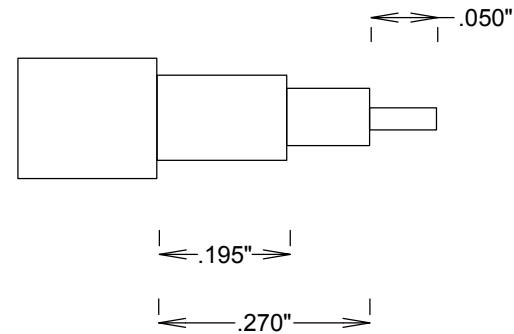
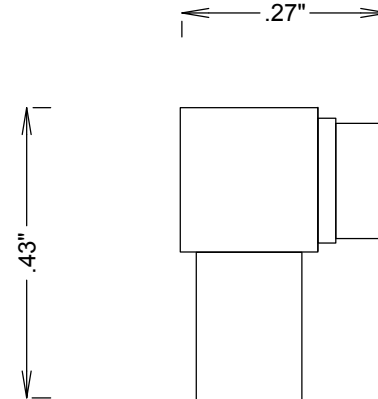
FREQUENCY: 0-6 GHZ
 VSWR 1.25:1 MAX
 IMPEDANCE: 50 OHMS
 OP. TEMP RANGE: -55C to +125C

MECHANICAL:

MATERIAL BODY: BRASS AU PLATING
 CENTER CONTACT: Brass
 CONTACT PLATING: Au MIL-G-45204
 CAPTIVATED CONTACT
 INSULATOR: TEFLON

ASSEMBLY

TRIM CABLE AS SHOWN,
 SLIDE CRIMP SLEEVE ON CABLE,
 SLIDE CABLE INTO BODY UNTIL
 IT RESTS IN CONTACT,
 SLIDE CRIMP SLEEVE FORWARD, CRIMP,
 SLIDE HEAT SHRINK INTO PLACE, SHRINK,
 SOLDER CENTER CONDUCTOR,
 PRESS CAP INTO BODY
 CRIMP



STRIPPING DIMENSIONS

				FAIRVIEW MICROWAVE INC.			
				ALLEN, TX 75013 WWW.FAIRVIEWMICROWAVE.COM			
				TITLE			
				MMCX-PLUG RG174 RG316 RA CRIMP			
SIZE		CAGE CODE		DWG NO		REV	
A		3FKR5		SC9539			
SCALE				SHEET			