

# SMA FLEXIBLE CABLES 26.5 GHZ WITH STAINLESS STEEL CONNECTORS

## SCC2610-0202-XX

### SPECIFICATIONS

FREQUENCY: 26.5 GHz

VSWR:

1.08 @ 2GHz

1.23 @ 12GHz

1.29 @ 18GHz

1.50 @ 26.5GHz

INSERTION LOSS, MAX dB/Foot

0.45dB @ 2GHz MAX

0.95dB @ 12GHz MAX

1.25dB @ 18GHz MAX

1.55dB @ 26.5GHz MAX

NOMINAL IMPEDANCE: 50 Ohms

TEMPERATURE RANGE: -40°C to +165°C

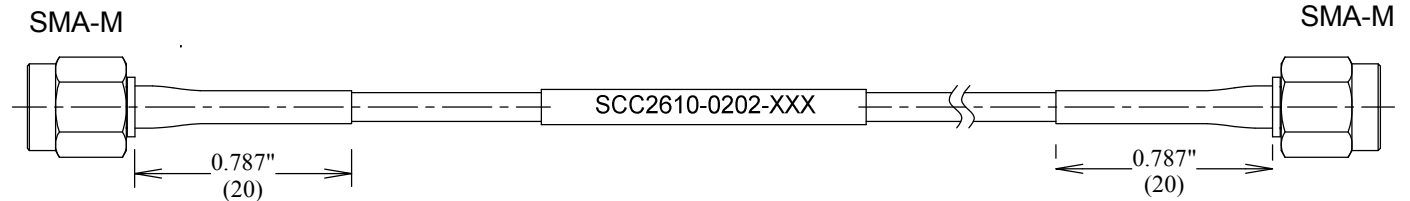
CONNECTORS:

MATERIAL BODY: PASSIVATED STAINLESS STEEL

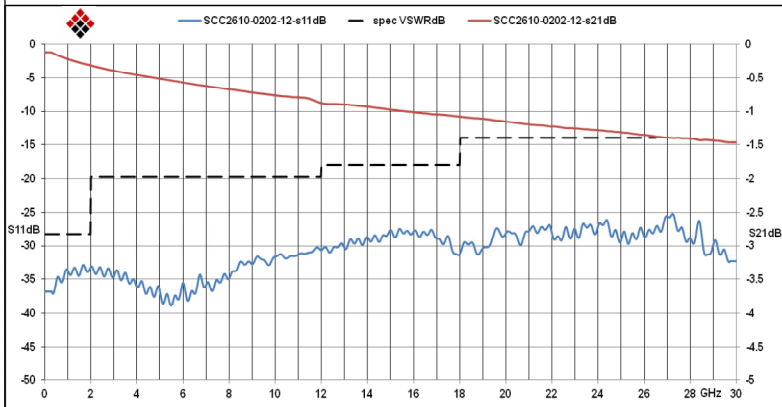
DIELECTRIC: TEFLON

INTERFACE: MIL-STD-348A

RoHS COMPLIANT



### MEASUREMENTS BELOW ARE TYPICAL



ALL DIMENSIONS IN inches(mm) Typical

## FAIRVIEW MICROWAVE INC.

ALLEN, TX 75013 WWW.FAIRVIEWMICROWAVE.COM

TITLE

### SMA FLEXIBLE CABLES 26.5 GHZ WITH STAINLESS STEEL CONNECTORS

SIZE

**A**

CAGE CODE

3FKR5

DWG NO

**SCC2610-0202-XX**

REV

--

SCALE

SHEET