

500 MHz to 18 GHz, Medium Power Broadband Amplifier with 15 dBm, 33 dB Gain and SMA

SLNA-180-30-35-SMA is a 15 dBm power amplifier designed for operation in the 0.5 GHz to 18 GHz frequency range. The amplifier utilizes high power devices that provide excellent linearity and high gain. High efficiency operation is achieved by using hybrid MIC designs and advanced GaAs PHEMT devices. The amplifier requires only +12 VDC power supply.

Electrical Specifications (TA= 25°C, VDC1 = 12 Vdc)

| Description | Min | Typ | Max | Unit |
|-----------------------------------|-----|------|-------|-------|
| Frequency Range | 0.5 | | 18 | GHz |
| Gain | 30 | 33 | | dB |
| Gain Flatness | | ±1.5 | | dB |
| P1dB | +15 | | | dBm |
| Noise Figure at 0.5 to 2 GHz | | | 5 | dB |
| Noise Figure at 2 to 18 GHz | | | 4 | dB |
| Noise Figure at | | | 3.5 | dB |
| Input VSWR | | 2:1 | 2.1:1 | |
| Output VSWR | | 2:1 | 2.1:1 | |
| Operating DC Voltage 1 | 11 | 12 | 13 | Volts |
| Operating DC Current | | 220 | | mA |
| Operating Temperature Range (OTR) | -40 | | +70 | °C |

Mechanical Specifications

| | |
|------------------|----------------------|
| Size | |
| Length | 1.093 in [27.76 mm] |
| Width | 1.33 in [33.78 mm] |
| Height | 0.382 in [9.7 mm] |
| Weight | 0.0775 lbs [35.15 g] |
| Input Connector | SMA Female |
| Output Connector | SMA Female |

Environmental Specifications

| | |
|---------------------|--------------------------|
| Temperature | |
| Operating Range | -40 to +70 deg C |
| Shock | RTCS, DO-160C |
| Vibration | RTCS, DO-160C |
| Temperature Cycling | MIL-STD-883, METHOD 1010 |

Compliance Certifications (see [product page](#) for current document)

Plotted and Other Data

Notes:



Features:

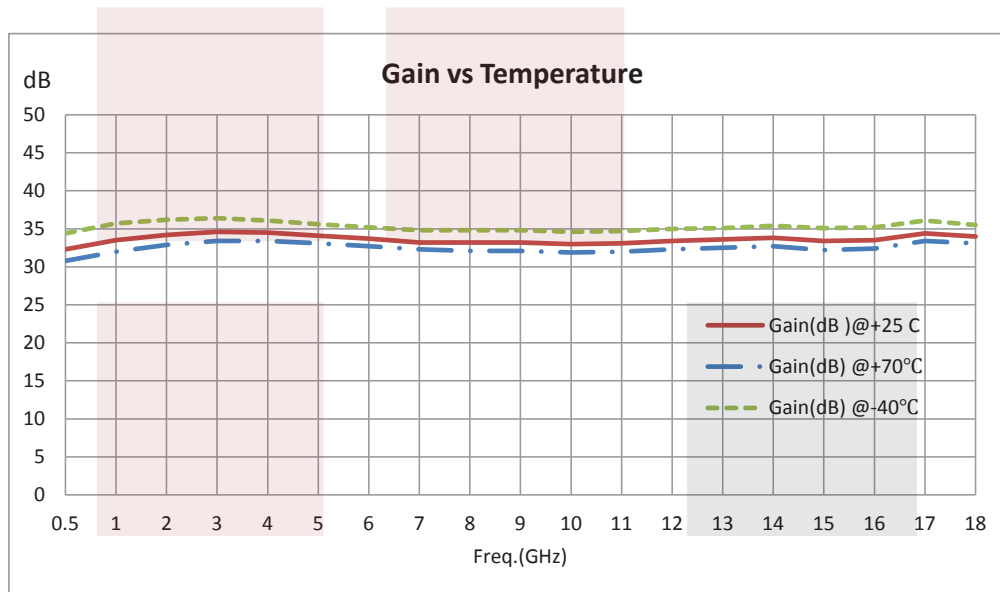
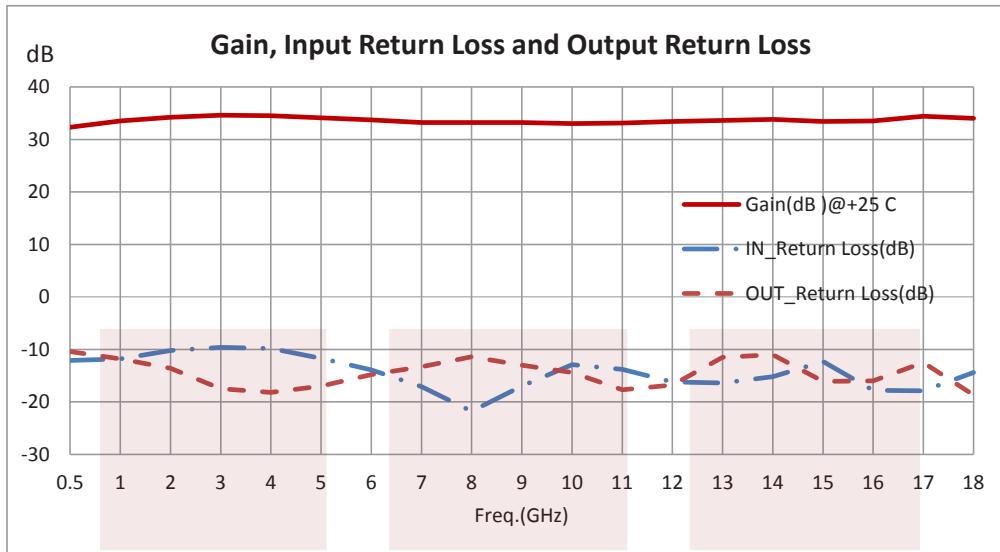
- 0.5 GHz to 18 GHz Frequency Range
- P1dB +15 dBm typ.
- Gain 30 dB min.
- Gain Flatness +/-1.5 dB typ

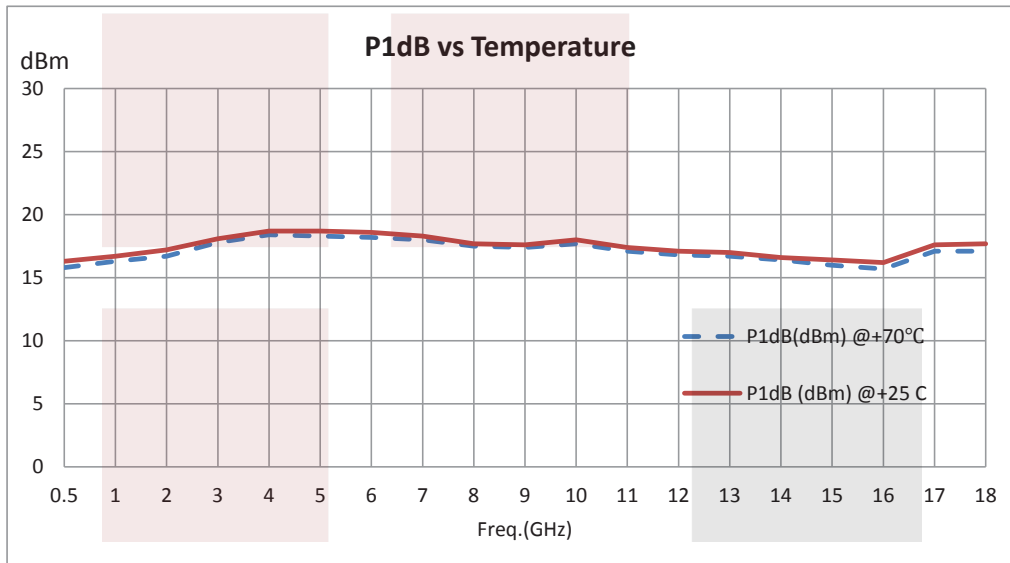
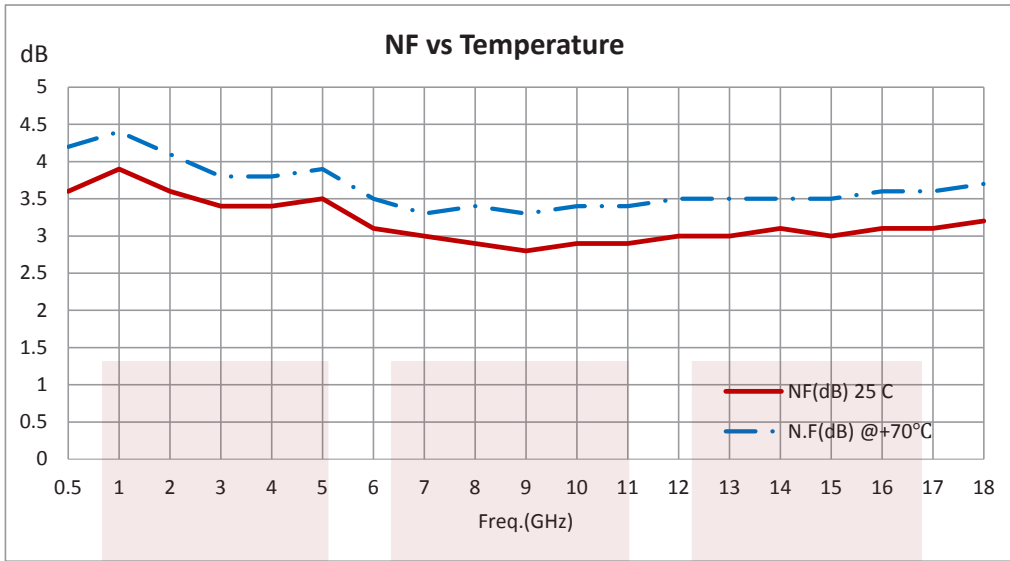
Applications:

- Medium Power Amplifier
- Driver Amp
- Military Communications
- Broadband Communication
- Test & Measurement

Fairview Microwave
 1130 Junction Dr. #100
 Allen, TX 75013
 Tel: 1-800-715-4396 / (972) 649-6678
 Fax: (972) 649-6689
www.fairviewmicrowave.com
sales@fairviewmicrowave.com

Typical Performance Data





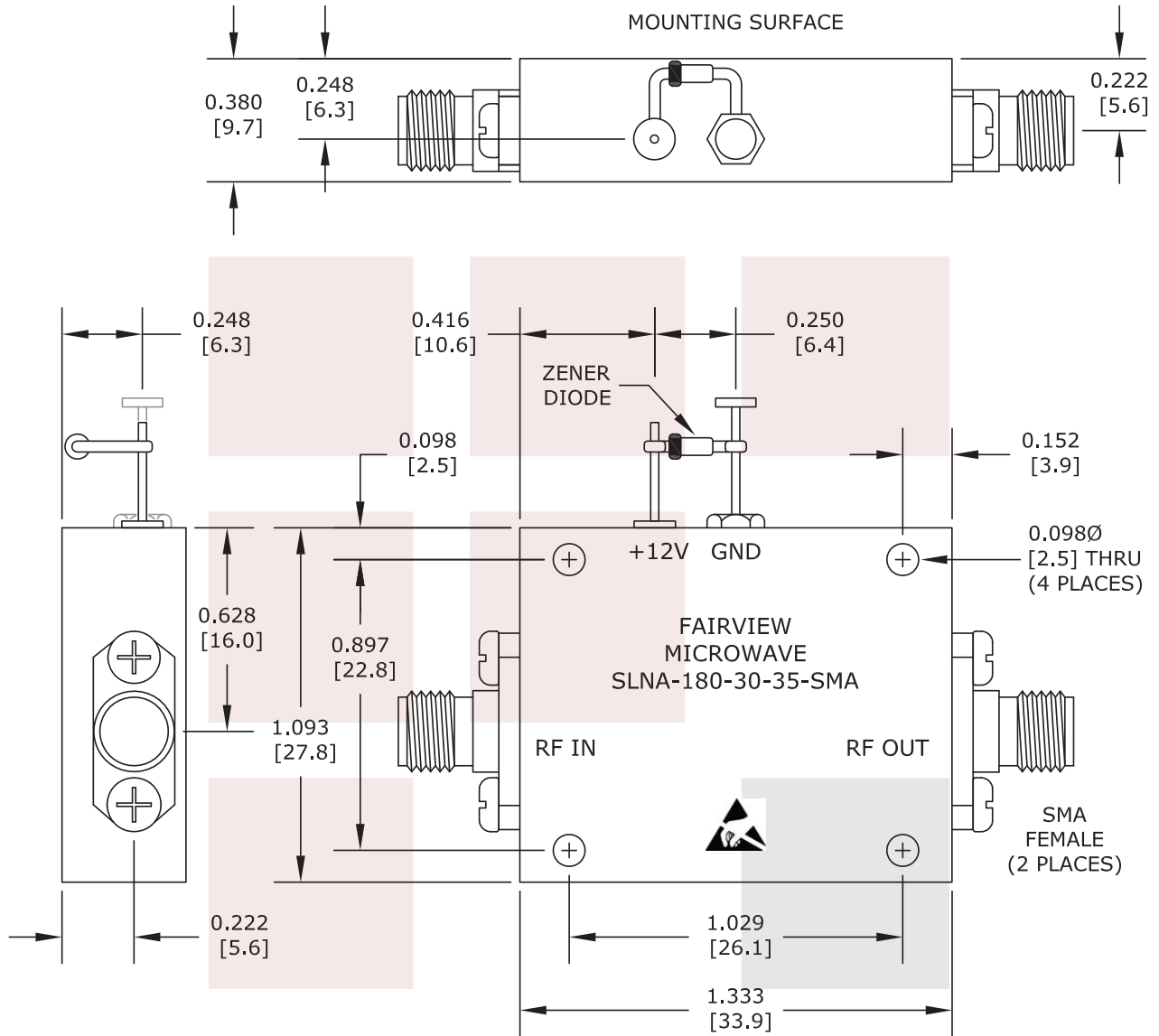
500 MHz to 18 GHz, Medium Power Broadband Amplifier with 15 dBm, 33 dB Gain and SMA from Fairview Microwave is in-stock and available to ship same-day. All of our RF/microwave products are available off-the-shelf from our ISO 9001:2008 certified facilities in Allen, Texas. Fairview Microwave is RF on-demand.

For additional information on this product, please click the following link: [500 MHz to 18 GHz, Medium Power Broadband Amplifier with 15 dBm, 33 dB Gain and SMA SLNA-180-30-35-SMA](#)

URL: <https://www.fairviewmicrowave.com/500-mhz-18-ghz-medium-power-broadband-amplifier-slna-180-30-35-sma-p.aspx>

The information contained in this document is accurate to the best of our knowledge and representative of the part described herein. It may be necessary to make modifications to the part and/or the documentation of the part, in order to implement improvements. Fairview Microwave reserves the right to make such changes as required. Unless otherwise stated, all specifications are nominal. Fairview Microwave does not make any representation or warranty regarding the suitability of the part described herein for any particular purpose, and Fairview Microwave does not assume any liability arising out of the use of any part or documentation.





| | | | | | |
|--|--|---|--|--------------------|--|
| FAIRVIEW MICROWAVE INC. ALLEN, TX 75013 WWW.FAIRVIEWMICROWAVE.COM | | NOTES: 1. UNLESS OTHERWISE SPECIFIED ALL DIMENSIONS ARE NOMINAL. 2. ALL SPECIFICATIONS ARE SUBJECT TO CHANGE WITHOUT NOTICE AT ANY TIME. 3. DIMENSIONS ARE IN INCHES [mm]. | | | |
| TITLE 500 MHz to 18 GHz, Medium Power Broadband Amplifier with 15 dBm, 33 dB Gain and SMA | | DWG NO SLNA-180-30-35-SMA | | CAGE CODE 3FKR5 | |
| CAD FILE 103014 SHEET | | SCALE N/A | | SIZE A 2233 | |