

2.4mm Female (Jack) to SMP Male (Plug) Full Detent Adapter, High Temp, 1.25 VSWR



SM8863

Configuration

- 2.4mm Female Connector 1
- Full Detent SMP Male Connector 2
- 50 Ohms Impedance
- Straight Body Geometry

Features

- VSWR of 1.25:1 max up to 40 GHz
- 2.4mm interface meets MIL-STD-348
- SMP interface meets MIL-STD-348
- Contact plating according to MIL-G-45204
- Gold Plated Beryllium Copper Contact

Applications

- Enables Between Series Connections
- General Purpose Test

Description

2.4mm female to SMP male full detent adapter part number SM8863 from Fairview Microwave is in-stock and ships same day. This Fairview 2.4mm to SMP adapter has a female to male gender configuration. SM8863 2.4mm female to SMP male adapter operates to 40 GHz. The Fairview Microwave RF adapter provides excellent VSWR of 1.25:1 maximum. The 2.4mm connector mates mechanically with commercially available 1.85mm (V) connectors.

RF adapters can be used to enable connections between two connector types that would otherwise not mate. Certain RF adapter configurations can also be used to protect connectors on expensive equipment where the number of connect and disconnect cycles is high. An RF, microwave, or millimeter wave adapter is connected to the equipment and the commonly changed connection is made with the adapter which can be easily replaced when it wears out after high usage; such adapters are referred to as connector savers. Fairview Microwave also offers bulkhead, panel mount, hermetically sealed, reverse polarity, and isolated ground adapter varieties to serve all of your RF, microwave and millimeter wave needs.

Electrical Specifications

Description	Minimum	Typical	Maximum	Units
Frequency Range	DC		40	GHz
Impedance		50		Ohms
VSWR			1.25:1	

Electrical Specification Notes:
Values at 25°C, sea level.

Mechanical Specifications

Size

Length	0.93 in [23.62 mm]
Width	0.25 in [6.35 mm]
Height	0.25 in [6.35 mm]
Weight	0.01 lbs [3.63 g]

Description	Connector 1	Connector 2
Polarity	Standard	Standard
Interface Specification	MIL-STD-348	MIL-STD-348

2.4mm Female (Jack) to SMP Male (Plug) Full Detent Adapter, High Temp, 1.25 VSWR



SM8863

Material Specifications

Description	Connector 1		Connector 2	
	Material	Plating	Material	Plating
Type	2.4mm Female		Full Detent SMP Male	
Contact	Beryllium Copper	Gold MIL-G-45204	Beryllium Copper	Gold MIL-G-45204
Insulation	PTFE		PTFE	
Outer Conductor	Beryllium Copper	Gold MIL-G-45204		
Body				Gold over Nickel

Environmental Specifications

Temperature

Operating Range -65 to +165 °C

Compliance Certifications (see [product page](#) for current document)

Plotted and Other Data

2.4mm Female (Jack) to SMP Male (Plug) Full Detent Adapter, High Temp, 1.25 VSWR from Fairview Microwave is in-stock and available to ship same-day. All of our RF/microwave products are available off-the-shelf from our ISO 9001:2008 certified facilities in Lewisville, Texas. Fairview Microwave is RF on-demand.

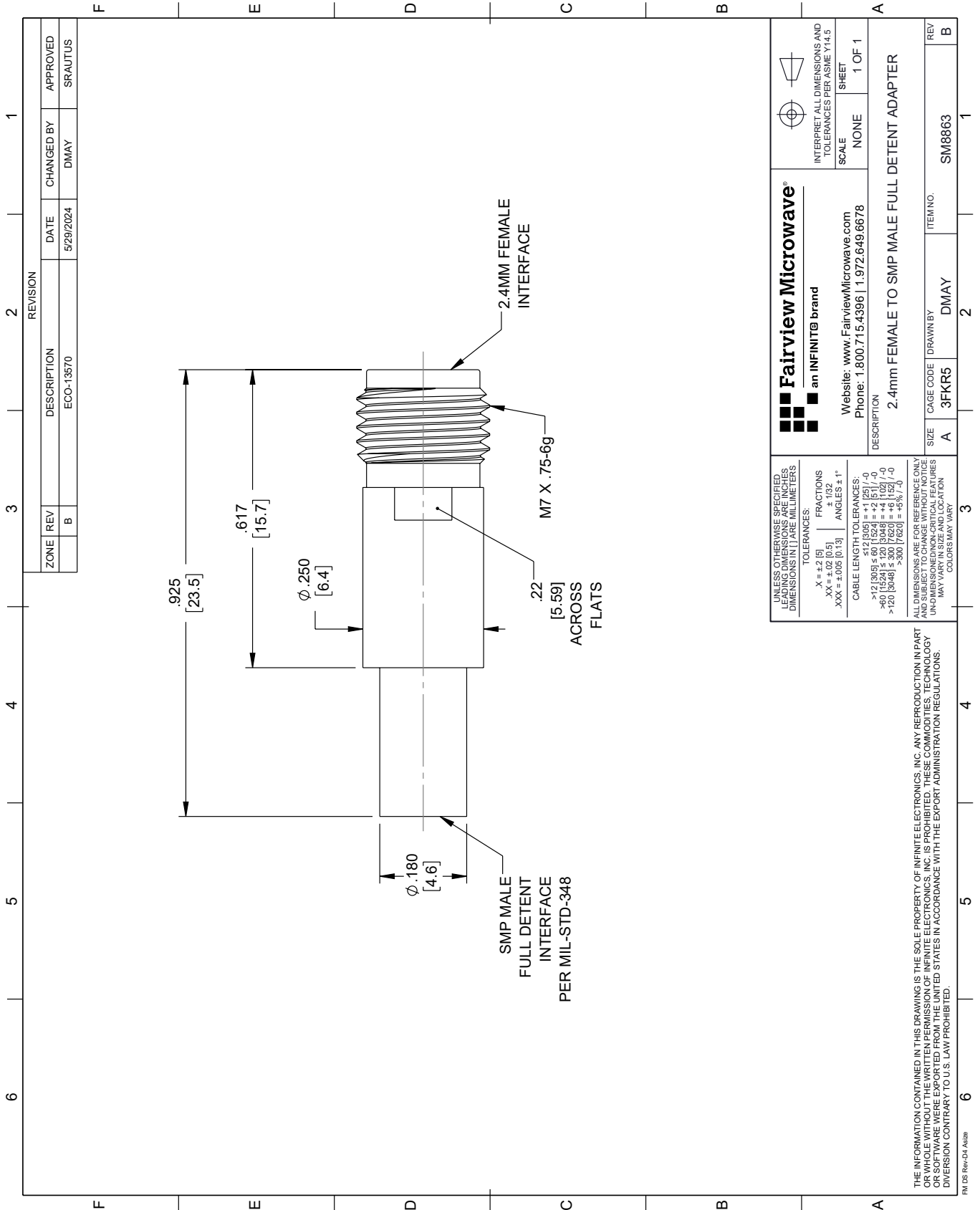
For additional information on this product, please click the following link: [2.4mm Female \(Jack\) to SMP Male \(Plug\) Full Detent Adapter, High Temp, 1.25 VSWR SM8863](#)

URL: <https://www.fairviewmicrowave.com/2.4mm-female-smp-male-full-detent-adapter-sm8863-p.aspx>

The information contained within this document is accurate to the best of our knowledge and representative of the part described herein. It may be necessary to make modifications to the part and/or the documentation of the part in order to implement improvements. Fairview Microwave reserves the right to make such changes as required. Unless otherwise stated, all specifications are nominal. Fairview Microwave does not make any representation or warranty regarding the suitability of the part described herein for any particular purpose, and Fairview Microwave does not assume liability arising out of the use of any part or document.

SM8863 CAD Drawing

2.4mm Female (Jack) to SMP Male (Plug) Full Detent Adapter, High Temp, 1.25 VSWR



Fairview Microwave
an INFINIT® brand

Website: www.FairviewMicrowave.com
Phone: 1.800.715.4396 | 1.972.649.6678

INTERPRET ALL DIMENSIONS AND TOLERANCES PER ASME Y14.5
SCALE: NONE
SHEET: 1 OF 1

DESCRIPTION: 2.4mm FEMALE TO SMP MALE FULL DETENT ADAPTER

REV	B
ITEM NO.	SM8863
SIZE	A
CAGE CODE	3FKR5
DRAWN BY	DMAY

UNLESS OTHERWISE SPECIFIED, LEADING DIMENSIONS ARE IN INCHES. DIMENSIONS IN [] ARE MILLIMETERS.

TOLERANCES:
 .X = ±.2 [5] FRACTIONS ± 1/32
 .XX = ±.02 [0.5] ANGLES ± 1°
 .XXX = ±.005 [0.13]

CABLE LENGTH TOLERANCES:
 >12 [305] ≤ 60 [1524] = ±.1 [25] / -0
 >60 [1524] ≤ 120 [3048] = ±.4 [102] / -0
 >120 [3048] ≤ 300 [7620] = ±.8 [20] / -0

ALL DIMENSIONS ARE FOR REFERENCE ONLY. UNDIMENSIONED/NON-CRITICAL FEATURES MAY VARY IN SIZE AND LOCATION. COLORS MAY VARY.

THE INFORMATION CONTAINED IN THIS DRAWING IS THE SOLE PROPERTY OF INFINITE ELECTRONICS, INC. ANY REPRODUCTION IN PART OR WHOLE WITHOUT THE WRITTEN PERMISSION OF INFINITE ELECTRONICS, INC. IS PROHIBITED. THESE COMMODITIES, TECHNOLOGY OR SOFTWARE WERE EXPORTED FROM THE UNITED STATES IN ACCORDANCE WITH THE EXPORT ADMINISTRATION REGULATIONS. DIVISION CONTRARY TO U.S. LAW PROHIBITED.

PM DS Rev-D4 Alt2