

**PCB to SMA Female Rotary Joint**

**Electrical Specifications**

Frequency Range	DC to 6 GHz
Max VSWR	1.15:1
Max Insertion Loss	0.3 dB

**Mechanical Specifications**

<b>Size</b>	
Length	0.866 in [22 mm]
Width	0.354 in [8.99 mm]
Weight	0.00441 lbs [2 g]
<b>Connector 1</b>	
Type	PCB
Inner Conductor Material and Plating	Beryllium Copper, Gold
Body Material and Plating	Brass, Gold
Dielectric Type	PTFE
<b>Connector 2</b>	
Type	SMA Female
Inner Conductor Material and Plating	Beryllium Copper, Gold
Body Material and Plating	Brass, Gold
Dielectric Type	PTFE

**Environmental Specifications**

**Compliance Certifications** (visit [www.FairviewMicrowave.com](http://www.FairviewMicrowave.com) for current document)

RoHS Compliant	Yes
----------------	-----

**Plotted and Other Data**

- Notes:
- Values at 25 °C, sea level

PCB to SMA Female Rotary Joint from Fairview Microwave is in-stock and available to ship same-day. All of our RF/microwave products are available off-the-shelf from our ISO 9001:2008 certified facilities in Allen, Texas. Fairview Microwave is RF on-demand.

For additional information on this product, please click the following link: [PCB to SMA Female Rotary Joint SR1805](#)

URL: <http://www.fairviewmicrowave.com/pcb-to-sma-female-rotary-joint-sr1805-p.aspx>

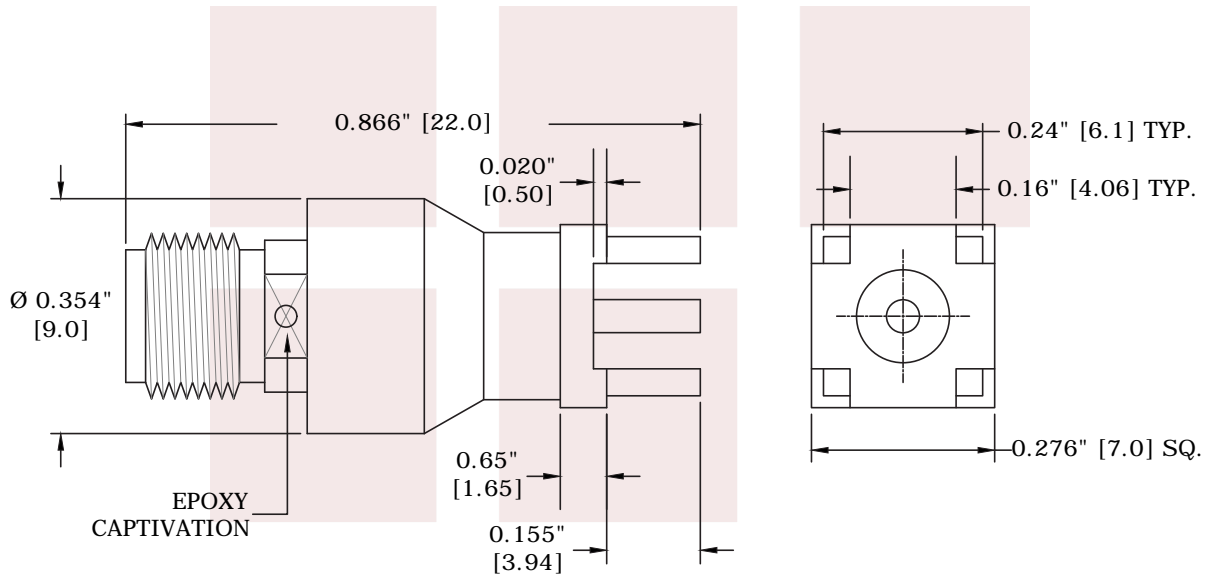
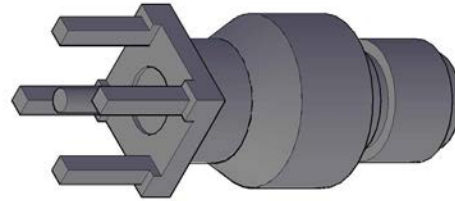
The information contained in this document is accurate to the best of our knowledge and representative of the part described herein. It may be necessary to make modifications to the part and/or the documentation of the part, in order to implement improvements. Fairview Microwave reserves the right to make such changes as required. Unless otherwise stated, all specifications are nominal. Fairview Microwave does not make any representation or warranty regarding the suitability of the part described herein for any particular purpose, and Fairview Microwave does not assume any liability arising out of the use of any part or documentation.



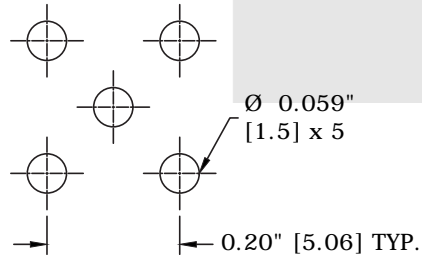
**Features:**

- Connector 1: PCB
- Impedance 1: 50 Ohms
- Connector 2: SMA Female
- Impedance 2: 50 Ohms
- Adapter Design: Standard
- Body Style: Straight

Fairview Microwave  
 1130 Junction Dr. #100  
 Allen, TX 75013  
 Tel: 1-800-715-4396 / (972) 649-6678  
 Fax: (972) 649-6689  
[www.fairviewmicrowave.com](http://www.fairviewmicrowave.com)  
[sales@fairviewmicrowave.com](mailto:sales@fairviewmicrowave.com)



**MOUNTING HOLE:**



<b>FAIRVIEW MICROWAVE INC.</b> ALLEN, TX 75013 WWW.FAIRVIEWMICROWAVE.COM		NOTES: 1. UNLESS OTHERWISE SPECIFIED ALL DIMENSIONS ARE NOMINAL. 2. ALL SPECIFICATIONS ARE SUBJECT TO CHANGE WITHOUT NOTICE AT ANY TIME. 3. DIMENSIONS ARE IN INCHES [mm].			
TITLE PCB to SMA Female Rotary Joint		DWG NO <b>SR1805</b>		CAGE CODE <b>3FKR5</b>	
CAD FILE	072715	SHEET	SCALE	N/A	SIZE A 5568