

WR-28 Waveguide Termination 2 Watts With a 26.5 GHz to 40 GHz Frequency Range

Configuration

| | |
|--------------|---------------|
| Connector | WR-28 Sexless |
| Mount Method | 4 Hole Flange |

Electrical Specifications

| | |
|---------------------|----------------|
| Frequency Range | 26.5 to 40 GHz |
| Impedance | 50 Ohms |
| Maximum VSWR | 1.05:1 |
| Maximum Input Power | 2 Watts |
| Peak Power | 500 Watts |

Mechanical Specifications

Size

| | |
|------------|----------------------|
| Length | 2.2 in [55.88 mm] |
| Width/Dia. | 0.75 in [19.05 mm] |
| Height | 0.13 in [3.3 mm] |
| Weight | 0.04806 lbs [21.8 g] |

Connector

| | |
|--------------------------------------|------------------------------|
| Type | WR-28 Sexless |
| Outer Conductor Material and Plating | Copper, Copper Clad Aluminum |
| Body Material and Plating | Copper |

Compliance Certifications (visit www.FairviewMicrowave.com for current document)

| | |
|----------------|-----|
| RoHS Compliant | Yes |
|----------------|-----|

Plotted and Other Data

Notes:

- Values at 25 °C, sea level

WR-28 Waveguide Termination 2 Watts With a 26.5 GHz to 40 GHz Frequency Range from Fairview Microwave is in-stock and available to ship same-day. All of our RF/microwave products are available off-the-shelf from our ISO 9001:2008 certified facilities in Allen, Texas. Fairview Microwave is RF on-demand.

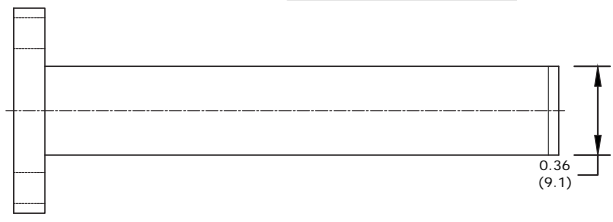
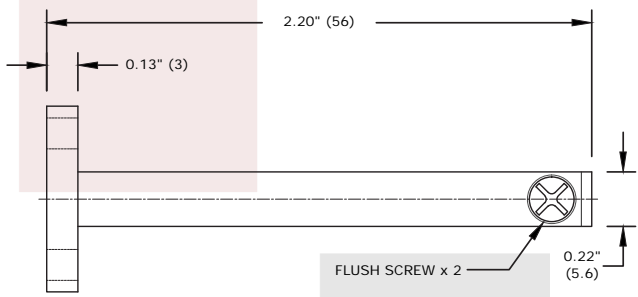
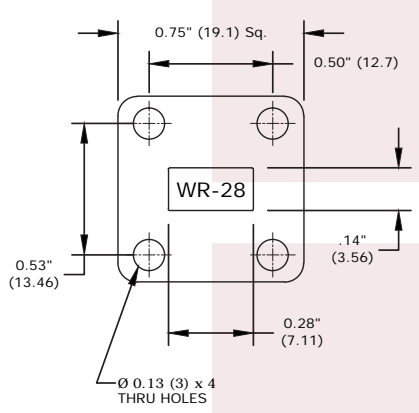
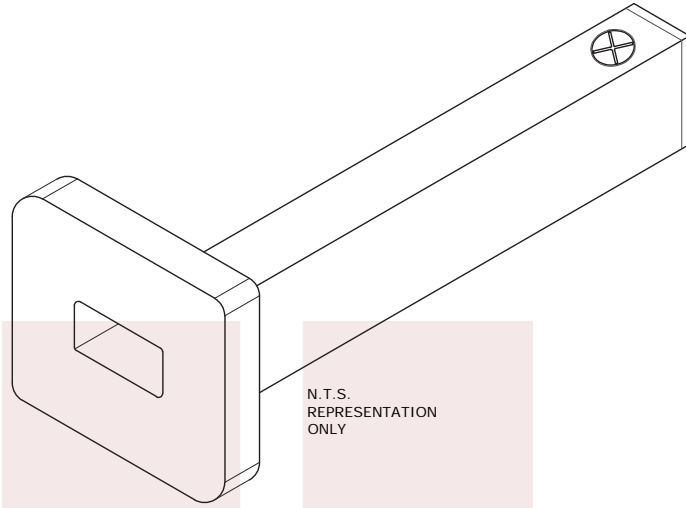
For additional information on this product, please click the following link: [WR-28 Waveguide Termination 2 Watts With a 26.5 GHz to 40 GHz Frequency Range STWR28](#)

URL: <http://www.fairviewmicrowave.com/wr-28-waveguide-termination-2-watts-26.5-40-ghz-stwr28-p.aspx>

The information contained in this document is accurate to the best of our knowledge and representative of the part described herein. It may be necessary to make modifications to the part and/or the documentation of the part, in order to implement improvements. Fairview Microwave reserves the right to make such changes as required. Unless otherwise stated, all specifications are nominal. Fairview Microwave does not make any representation or warranty regarding the suitability of the part described herein for any particular purpose, and Fairview Microwave does not assume any liability arising out of the use of any part or documentation.



Fairview Microwave
 1130 Junction Dr. #100
 Allen, TX 75013
 Tel: 1-800-715-4396 / (972) 649-6678
 Fax: (972) 649-6689
www.fairviewmicrowave.com
sales@fairviewmicrowave.com



FAIRVIEW MICROWAVE INC.
 ALLEN, TX 75013 WWW.FAIRVIEWMICROWAVE.COM

NOTES:
 1. UNLESS OTHERWISE SPECIFIED ALL DIMENSIONS ARE NOMINAL.
 2. ALL SPECIFICATIONS ARE SUBJECT TO CHANGE WITHOUT NOTICE AT ANY TIME.
 3. DIMENSIONS ARE IN INCHES [mm].

| | | |
|---|--------|-----------|
| TITLE | DWG NO | CAGE CODE |
| WR-28 Waveguide Termination 2 Watts With a 26.5 GHz to 40 GHz Frequency Range | STWR28 | 3FKR5 |

| | | | |
|----------|-------|-------|------|
| CAD FILE | SHEET | SCALE | SIZE |
| 011415 | | N/A | A |
| | | 5568 | |