

## RP SMA Male Connector Crimp/Solder Attachment for LMR-240, LMR-240-DB, LMR-240-UF, LMR-240- FR, RG8X Cable

### Times Microwave Systems Connector Specification

TC-240-SM-RP SMA male right angle coaxial connector has an interface type of SMA male which is compatible with LMR-240, LMR-240-DB, LMR-240-UF, LMR-240-FR, and RG8X cables and a 50 Ohms impedance. Fairview Microwave's SMA male connector uses crimp/non-solder contact as an attachment method. Our male SMA right angle coaxial connector operates at a maximum frequency of 2.5 GHz.

The Fairview Microwave SMA male coaxial connector has a PTFE dielectric type and a VSWR of 1.25. Fairview Microwave's SMA coaxial connector has a passivated stainless steel body. Our TC-240-SM-RP connector uses beryllium copper contact. This threaded RF connector can operate at temperatures ranging from -40 to 85 degrees C. Additional RF connector specs and dimensions for this component can be found on its PDF specification datasheet and CAD drawings above.

The radio frequency connector is made from passivated stainless steel. This SMA connector has a gold inner contact plating.

This Fairview Microwave RP male SMA connector will ship the same business day as purchased. Our SMA male connector is part of over 40,000 RF, microwave, and millimeter wave components in stock for worldwide shipment. For further information on similar products, our expert technical support and trained sales team can get you the ideal RF connector as per your requirements.

### Electrical Specifications

Description	Min	Typ	Max	Units
Frequency Range	DC		2.5	GHz
VSWR			1.25:1	

### Mechanical Specifications

<b>Size</b>	
Length	1.01 in [25.65 mm]
Width/Dia.	0.25 in [6.35 mm]
Height	0.25 in [6.35 mm]
Weight	0.1 lbs [45.36 g]

### Material Specifications

Description	Material	Plating
Contact	Beryllium copper	Gold
Insulation	PTFE	
Body	Passivated Stainless Steel	
Coupling Nut	Passivated Stainless Steel	
Gasket	Silicone	
Crimp Sleeve	Copper	Nickel



### Configuration:

- SMA Male Reverse Polarity Connector
- MIL-STD-345
- 50 Ohms
- Straight Body Geometry
- LMR-240, LMR-240-DB, LMR-240-UF, LMR-240-FR, RG8X Interface Type
- Crimp/Solder Attachment

### Features:

- Operating Frequency of 2.5 GHz Max.
- Excellent VSWR of 1.25:1
- Reverse Polarity
- Gold Plated Beryllium copper Contact

### Applications:

- General Purpose Test
- Custom Cable Assemblies

Fairview Microwave  
301 Leora Ln., Suite 100  
Lewisville, TX 75056  
Tel: 1-800-715-4396 / (972) 649-6678  
Fax: (972) 649-6689  
[www.fairviewmicrowave.com](http://www.fairviewmicrowave.com)  
[sales@fairviewmicrowave.com](mailto:sales@fairviewmicrowave.com)

## Environmental Specifications

### Temperature

Operating Range -40 to +85 deg C

**Compliance Certifications** (see [product page](#) for current document)

## Plotted and Other Data

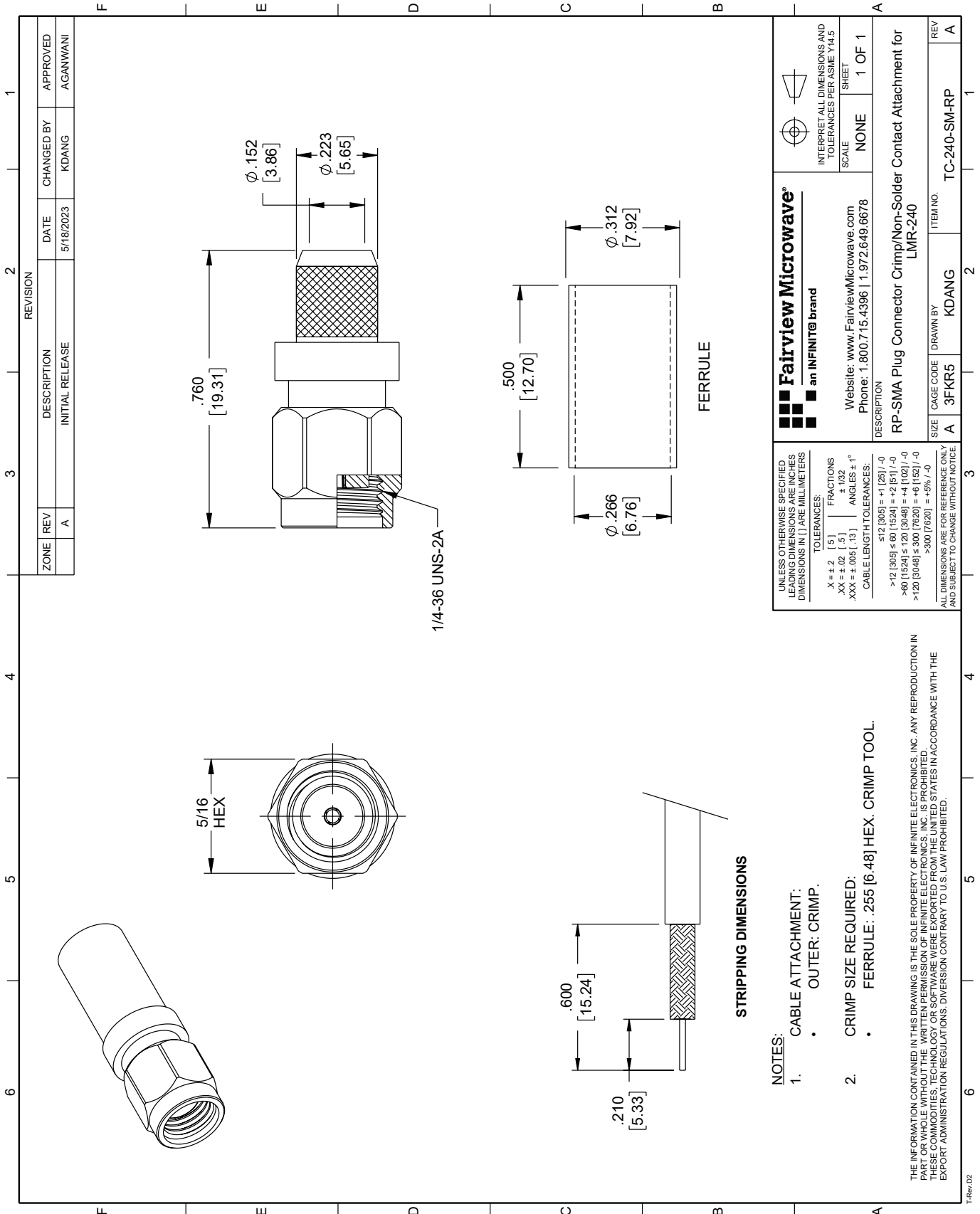
Notes:

RP SMA Male Connector Crimp/Solder Attachment for LMR-240, LMR-240-DB, LMR-240-UF, LMR-240-FR, RG8X Cable from Fairview Microwave is in-stock and available to ship same-day. All of our RF/microwave products are available off-the-shelf from our ISO 9001:2008 certified facilities in Lewisville, Texas. Fairview Microwave is RF on-demand.

For additional information on this product, please click the following link: [RP SMA Male Connector Crimp/Solder Attachment for LMR-240, LMR-240-DB, LMR-240-UF, LMR-240-FR, RG8X Cable TC-240-SM-RP](#)

URL: <https://www.fairviewmicrowave.com/sma-male-reverse-polarity-lmr-240-lmr-240-db-lmr-240-uf-lmr-240-fr-rg8x-connector-tc-240-sm-rp-p.aspx>

The information contained in this document is accurate to the best of our knowledge and representative of the part described herein. It may be necessary to make modifications to the part and/or the documentation of the part, in order to implement improvements. Fairview Microwave reserves the right to make such changes as required. Unless otherwise stated, all specifications are nominal. Fairview Microwave does not make any representation or warranty regarding the suitability of the part described herein for any particular purpose, and Fairview Microwave does not assume any liability arising out of the use of any part or documentation.



ZONE		REVISION		DESCRIPTION		DATE		CHANGED BY		APPROVED	
	REV			INITIAL RELEASE		5/18/2023		KDANG		AGANWANI	
	A										

<p><b>Fairview Microwave</b> an INFINIT<sup>®</sup> brand</p> <p>Website: <a href="http://www.FairviewMicrowave.com">www.FairviewMicrowave.com</a> Phone: 1.800.715.4396   1.972.649.6678</p>		<p>INTERPRET ALL DIMENSIONS AND TOLERANCES PER ASME Y14.5 SHEET</p> <p>SCALE: NONE</p> <p>SHEET: 1 OF 1</p>	
<p>DESCRIPTION: RP-SMA Plug Connector Crimp/Non-Solder Contact Attachment for LMR-240</p>			
SIZE	CAGE CODE	DRAWN BY	ITEM NO.
A	3FKR5	KDANG	TC-240-SM-RP

**NOTES:**

- CABLE ATTACHMENT: OUTER: CRIMP.
- CRIMP SIZE REQUIRED: FERRULE: .255 [6.48] HEX. CRIMP TOOL.

UNLESS OTHERWISE SPECIFIED, LEADING DIMENSIONS ARE INCHES DIMENSIONS IN [ ] ARE MILLIMETERS

TOLERANCES:

.X ± .2	[.5]	FRACTIONS
.XX ± .02	[.5]	± 1/32
.XXX ± .005	[.13]	ANGLES ± 1°

CABLE LENGTH TOLERANCES:

512 [305]	= +1 [25] / -0
>12 [305]	≤ 60 [1524] = +2 [51] / -0
>60 [1524]	≤ 120 [3048] = +4 [102] / -0
>120 [3048]	≤ 300 [7620] = +6 [152] / -0
>300 [7620]	> +5% / -0

ALL DIMENSIONS ARE FOR REFERENCE ONLY AND SUBJECT TO CHANGE WITHOUT NOTICE

THE INFORMATION CONTAINED IN THIS DRAWING IS THE SOLE PROPERTY OF INFINITE ELECTRONICS, INC. ANY REPRODUCTION IN PART OR WHOLE WITHOUT THE WRITTEN PERMISSION OF INFINITE ELECTRONICS, INC. IS PROHIBITED. THESE COMMODITIES, TECHNOLOGY OR SOFTWARE WERE EXPORTED FROM THE UNITED STATES IN ACCORDANCE WITH THE EXPORT ADMINISTRATION REGULATIONS. DIVERSION CONTRARY TO U.S. LAW PROHIBITED.