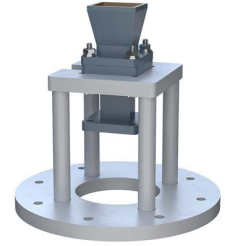


WR-62 Waveguide Antenna With 10 dBi Gain and 12.4 GHz to 18 GHz, Integrated Cage-Style Mount

FM1WAN062-10



Features

- WR-62 Rectangular Waveguide Interface
- 12.4 GHz to 18 GHz
- 10 dBi Nominal Gain
- Square Cover Cover Flange
- Ku Band
- Ruggedized Aluminum Cage-Style Mount
- Integrates with Positioning Systems

Applications

- Antenna Measurements
- Wireless Communication
- Laboratory Use
- Microwave Radio Systems

Description

The FM1WAN062-10 standard gain horn antenna (also known as waveguide horn) from Fairview Microwave has a nominal gain of 10 dBi. The Fairview Microwave 10 dBi WR-62 horn antenna operates from 12.4 GHz to 18 GHz (Ku Band). This WR-62 standard gain horn has a Square Cover type flange and integrated cage-style mount. The mount is a ruggedized aluminum mounting solution that integrates with test and measurement positioning systems, ensuring precise alignment and protection of the antenna.

Waveguide standard gain horn antennas are used in a wide variety of applications due to their high power handling capability, low loss, high directivity, and near constant electrical performance. These units are Aluminum and powder coated for increased resistance to weather and corrosion with a Horizontal and Vertical Beam Width of 52.1 and 51.6 degrees respectively.

Fairview Microwave's WR-62 standard gain horns are available in 10, 15 and 20 dBi models with pyramidal shape and rectangular input. Ku Band standard gain horn antenna can ship the same day to anywhere in the world. The WR-62 FM1WAN062-10 waveguide horn is part of over 40,000 RF, microwave and millimeter wave components available from Fairview Microwave.

Configuration

| | |
|--------------|--------|
| Design | WR-62 |
| Polarization | Linear |

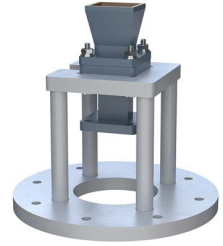
Electrical Specifications

| Description | Minimum | Typical | Maximum | Units |
|----------------------------------|---------|---------|---------|---------|
| Frequency Range | 12.4 | | 18 | GHz |
| Nominal Gain | | 10 | | dBi |
| Horizontal Half Power Beam Width | | 52.1 | | Degrees |
| Vertical Half Power Beam Width | | 51.6 | | Degrees |
| VSWR | | 1.3:1 | | |

Mechanical Specifications

| | |
|-------------|------------------------|
| Size | |
| Length | 2.44 in [61.98 mm] |
| Width | 2.44 in [61.98 mm] |
| Height | 4.61 in [117.09 mm] |
| Weight | 0.73355 lbs [332.73 g] |

WR-62 Waveguide Antenna With 10 dBi Gain and 12.4 GHz to 18 GHz, Integrated Cage-Style Mount



FM1WAN062-10

Waveguide Interface

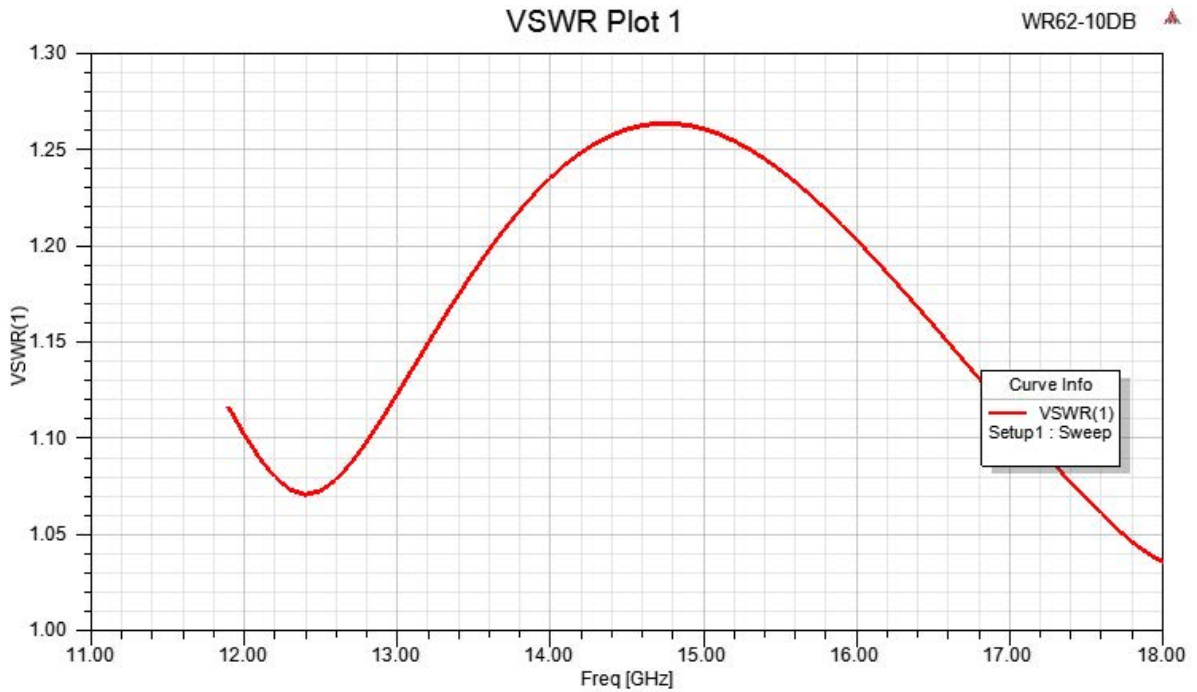
| | |
|---------------------------|----------------|
| Waveguide Size | WR-62 |
| Flange Type | Square Cover |
| Body Material and Plating | Aluminum, Gray |

Compliance Certifications (see [product page](#) for current document)

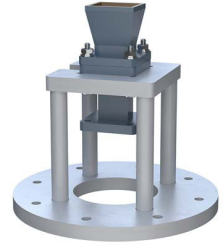
Plotted and Other Data

Notes:

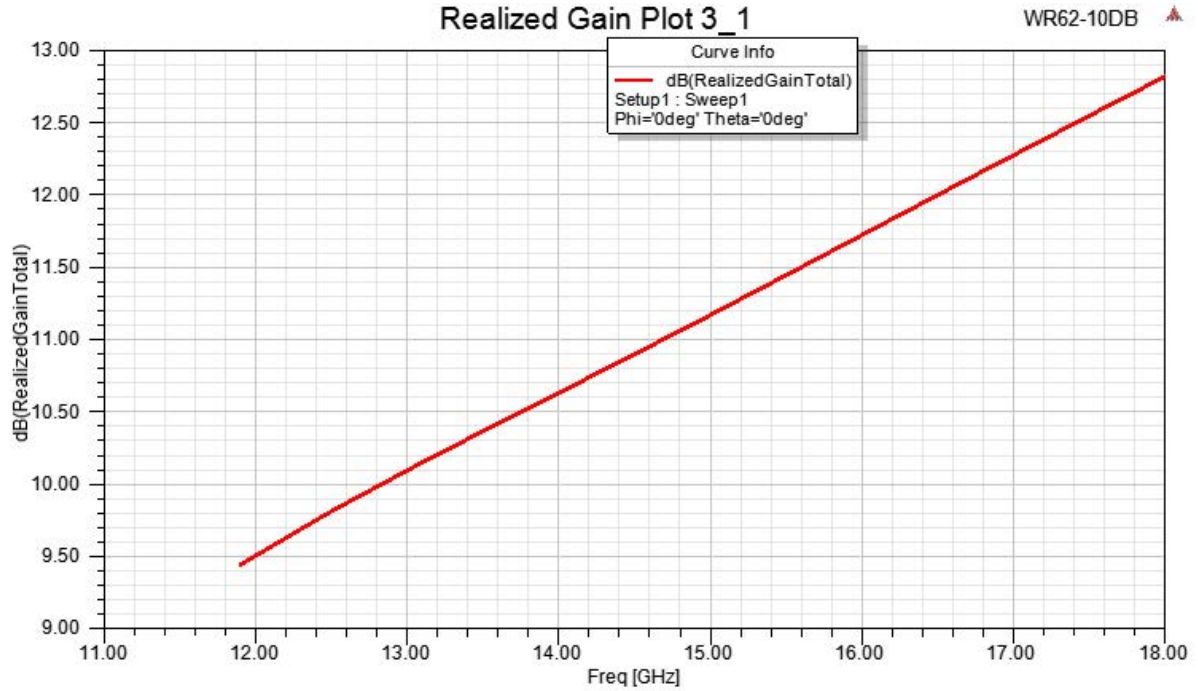
Typical Performance Data



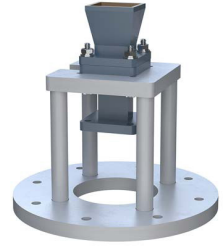
WR-62 Waveguide Antenna With 10 dBi Gain and
12.4 GHz to 18 GHz, Integrated Cage-Style Mount



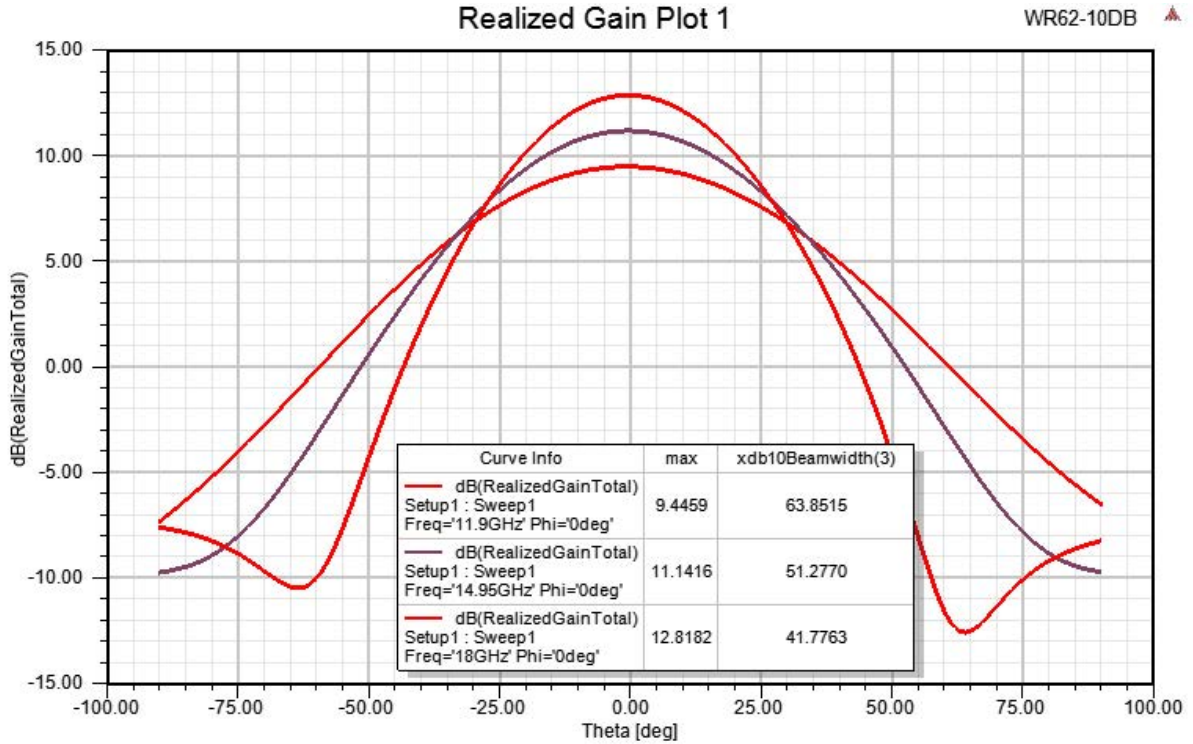
FM1WAN062-10



WR-62 Waveguide Antenna With 10 dBi Gain and 12.4 GHz to 18 GHz, Integrated Cage-Style Mount



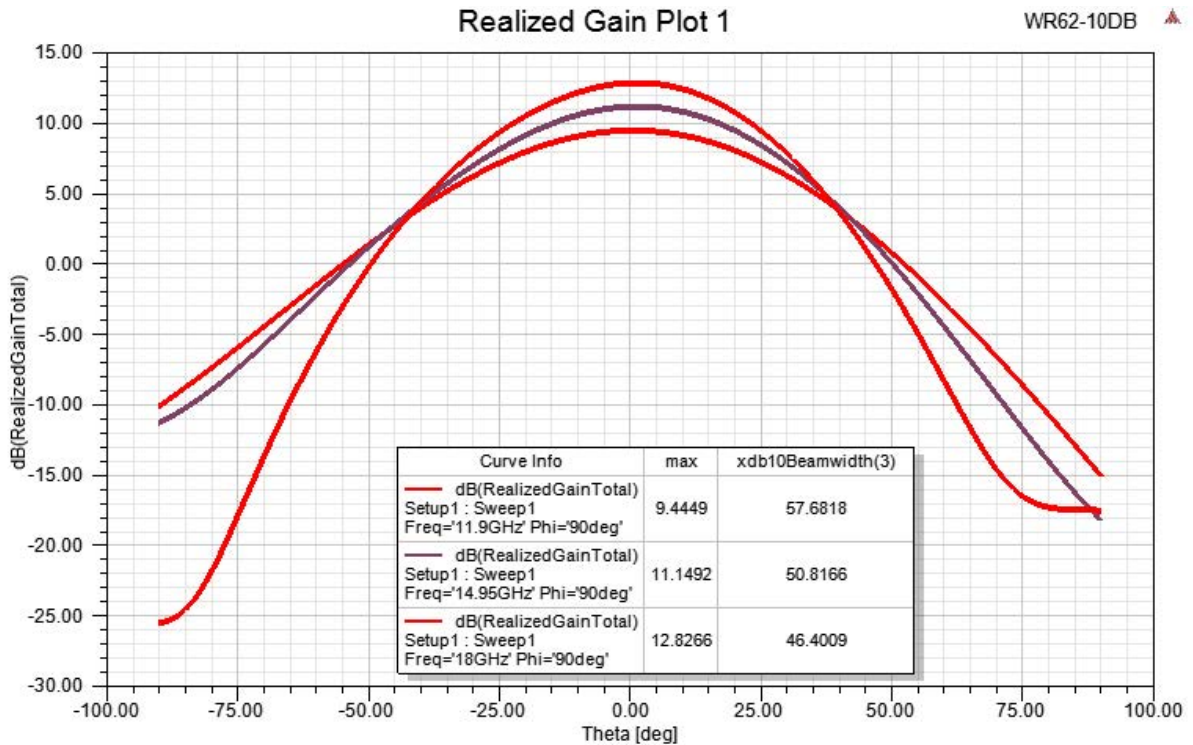
FM1WAN062-10



WR-62 Waveguide Antenna With 10 dBi Gain and 12.4 GHz to 18 GHz, Integrated Cage-Style Mount



FM1WAN062-10



WR-62 Waveguide Antenna With 10 dBi Gain and 12.4 GHz to 18 GHz, Integrated Cage-Style Mount from Fairview Microwave is in-stock and available to ship same-day. All of our RF/microwave products are available off-the-shelf from our ISO 9001:2008 certified facilities in Lewisville, Texas. Fairview Microwave is RF on-demand.

For additional information on this product, please click the following link: [WR-62 Waveguide Antenna With 10 dBi Gain and 12.4 GHz to 18 GHz, Integrated Cage-Style Mount FM1WAN062-10](https://www.fairviewmicrowave.com/wr-62-waveguide-antenna-12.4-ghz-to-18-ghz-frequency-range-10-dbi-gain-integrated-cage-style-mount-fm1wan062-10-p.aspx)

URL: <https://www.fairviewmicrowave.com/wr-62-waveguide-antenna-12.4-ghz-to-18-ghz-frequency-range-10-dbi-gain-integrated-cage-style-mount-fm1wan062-10-p.aspx>

The information contained within this document is accurate to the best of our knowledge and representative of the part described herein. It may be necessary to make modifications to the part and/or the documentation of the part in order to implement improvements. Fairview Microwave reserves the right to make such changes as required. Unless otherwise stated, all specifications are nominal. Fairview Microwave does not make any representation or warranty regarding the suitability of the part described herein for any particular purpose, and Fairview Microwave does not assume liability arising out of the use of any part or document.

FM1WAN062-10 CAD Drawing

WR-62 Waveguide Antenna With 10 dBi Gain and 12.4 GHz to 18 GHz, Integrated Cage-Style Mount

