

Antenna Operates From 1.7 GHz to 2.5 GHz with a Maximum 2 dBi Gain TNC Male Input Connector Rated

FM51173 from Fairview Microwave is part of our extensive in-stock omnidirectional radio antenna selection. This single band portable antenna has a frequency range of 1.7 GHz to 2.5 GHz and a nominal dBi gain. Our portable antenna uses TNC male connector and is rated for 50 Watts input. FM51173 portable radio antenna is one of over 40,000 RF, microwave and millimeter wave components supplied from Fairview Microwave. Our portable aerial can be bought and shipped worldwide the same-day as with our other available RF parts.

Configuration

Design	Portable
Gain	2
Polarization	Vertical
Connector Type	TNC Male

Electrical Specifications

Description	Min	Typ	Max	Units
Frequency Range	1,700		2,500	MHz
Input VSWR			2:1	
Impedance		50		Ohms
Gain		2	2	dBi
Horizontal (Azimuth) Beam Width		70		Degrees
Vertical (Elevation) Beam Width		360		Degrees
Input Power			50	Watts

Mechanical Specifications

Radome Material	Fiberglass
Size	
Length	10 in [254 mm]
Width	0.812 in [20.62 mm]
Height	0 in [0 mm]
Weight	0.122 lbs [55.34 g]

Environmental Specifications

Wind Loading	62 MPH [99.78 KPH]
--------------	--------------------

Compliance Certifications (see [product page](#) for current document)

Plotted and Other Data

Notes:



Features:

- 1700 - 2500 MHz omnidirectional rubberduck antenna
- Heavy duty spring base
- Vertical Polarized
- 2 dBi gain
- 50 W power handling capacity
- Military grade rugged fiberglass antenna
- TNC Male connector
- Low Glare Black

Applications:

- GSM/CDMA/LTE cellular communications
- WiMax & IOT
- 2.4 GHz Wi-Fi
- Military radio relay, telemetry and Control station communications
- Super rugged

Fairview Microwave
 301 Leora Ln., Suite 100
 Lewisville, TX 75056
 Tel: 1-800-715-4396 / (972) 649-6678
 Fax: (972) 649-6689
www.fairviewmicrowave.com
sales@fairviewmicrowave.com

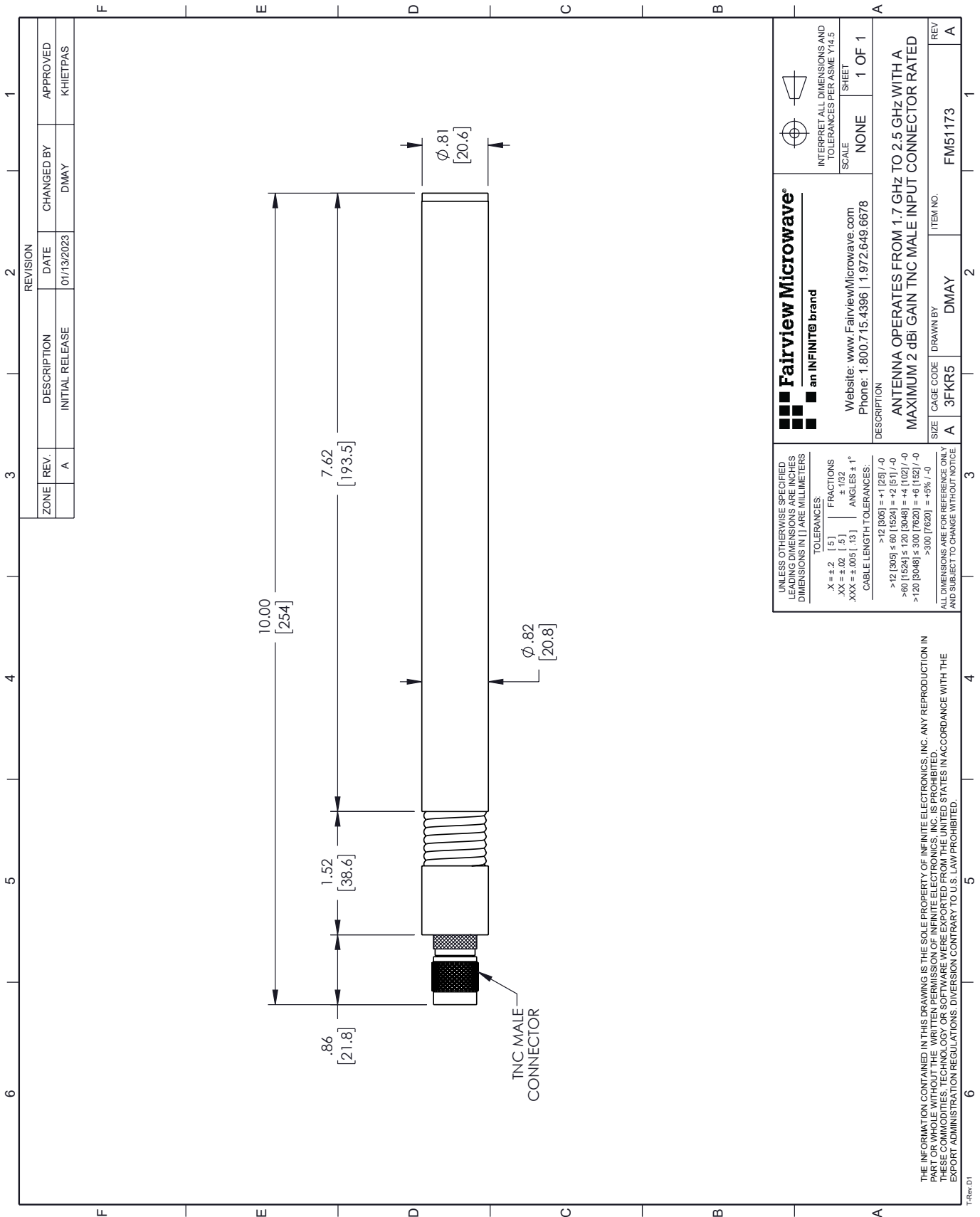
Antenna Operates From 1.7 GHz to 2.5 GHz with a Maximum 2 dBi Gain TNC Male Input Connector Rated from Fairview Microwave is in-stock and available to ship same-day. All of our RF/microwave products are available off-the-shelf from our ISO 9001:2008 certified facilities in Lewisville, Texas. Fairview Microwave is RF on-demand.

For additional information on this product, please click the following link: [Antenna Operates From 1.7 GHz to 2.5 GHz with a Maximum 2 dBi Gain TNC Male Input Connector Rated FM51173](#)

URL: <https://www.fairviewmicrowave.com/2-dbi-portable-antenna-1700-2500-mhz-tnc-connector-fm51173-p.aspx>

The information contained in this document is accurate to the best of our knowledge and representative of the part described herein. It may be necessary to make modifications to the part and/or the documentation of the part, in order to implement improvements. Fairview Microwave reserves the right to make such changes as required. Unless otherwise stated, all specifications are nominal. Fairview Microwave does not make any representation or warranty regarding the suitability of the part described herein for any particular purpose, and Fairview Microwave does not assume any liability arising out of the use of any part or documentation.





REVISION		DATE	CHANGED BY	APPROVED
ZONE	REV.	DESCRIPTION	INITIAL RELEASE	
	A		DMAY	KHIETPAS

<p>Fairview Microwave an INFINIT[®] brand</p> <p>Website: www.FairviewMicrowave.com Phone: 1.800.715.4396 1.972.649.6678</p>	<p>INTERPRET ALL DIMENSIONS AND TOLERANCES PER ASME Y14.5</p>
	<p>SCALE: NONE</p> <p>SHEET: 1 OF 1</p>
<p>DESCRIPTION: ANTENNA OPERATES FROM 1.7 GHz TO 2.5 GHz WITH A MAXIMUM 2 dBI GAIN TNC MALE INPUT CONNECTOR RATED</p>	
<p>SIZE: A</p> <p>CAGE CODE: 3FKR5</p> <p>DRAWN BY: DMAY</p>	<p>ITEM NO.: FM51173</p> <p>REV: A</p>

UNLESS OTHERWISE SPECIFIED, LEADING DIMENSIONS ARE INCHES DIMENSIONS IN [] ARE MILLIMETERS

TOLERANCES:

.X = ±.2 [5] | FRACTIONS ±.132 | ANGLES ± 1°

.XX = ±.02 [.5] | .XXX = ±.005 [.13]

CABLE LENGTH TOLERANCES:

>12 [305] = +1 [25] / -0

>12 [305] ≤ 60 [1524] = +2 [51] / -0

>60 [1524] ≤ 120 [3048] = +4 [102] / -0

>120 [3048] ≤ 300 [7620] = +6 [152] / -0

>300 [7620] = +5% / -0

ALL DIMENSIONS ARE FOR REFERENCE ONLY AND SUBJECT TO CHANGE WITHOUT NOTICE

THE INFORMATION CONTAINED IN THIS DRAWING IS THE SOLE PROPERTY OF INFINITE ELECTRONICS, INC. ANY REPRODUCTION IN PART OR WHOLE WITHOUT THE WRITTEN PERMISSION OF INFINITE ELECTRONICS, INC. IS PROHIBITED. THESE COMMODITIES, TECHNOLOGY OR SOFTWARE WERE EXPORTED FROM THE UNITED STATES IN ACCORDANCE WITH THE EXPORT ADMINISTRATION REGULATIONS. DIVERSION CONTRARY TO U.S. LAW PROHIBITED.