

7.4 dBi Omni Antenna 2.4-2.5 GHz, N Type Male Fiberglass Radome, 2:1 Max VSWR

The Fairview Microwave FM510M1025 is a high performance Omni-directional elevated feed antenna designed for the 2.4 GHz ISM band. This compact and lightweight antenna is ideally suited for IEEE 802.11b and 802.11g wireless LANs, public wireless hotspots, Bluetooth® and other multipoint and mobile applications where high gain and wide coverage is desired. This antenna features a co-linear stacked design with an elevated feed point. This allows the antenna to operate using a very small ground plane.

Measuring 17.5" long, this antenna features an aesthetic black finish. It features a built-in shock spring and is designed with a standard N-Male connector that allows for ease of installation to similar N-Female mounting systems (mobile and fixed mounts).

Configuration

Design	Omni
Gain	7.4
Polarization	Vertical
Connector Type	N Male
Number of Ports	1

Electrical Specifications

Description	Min	Typ	Max	Units
Frequency Range	2,400		2,500	MHz
Input VSWR			2:1	
Impedance		50		Ohms
Gain		7.4		dBi
Horizontal (Azimuth) Beam Width		360		Degrees
Input Power			50	Watts

Mechanical Specifications

Radome Material	Fiberglass
Size	
Length	18.4 in [467.36 mm]
Width	0.75 in [19.05 mm]
Height	0.75 in [19.05 mm]
Weight	0.68 lbs [308.44 g]

Environmental Specifications

Compliance Certifications (see [product page](#) for current document)

Plotted and Other Data

Notes:



Features:

- Flexible Spring Base for Antenna Flexibility
- Can be Mounted on Magnetic base or permanent Base (order separately)
- Weather-Proof, High performance
- Fixed mounts available
- Compact size

Applications:

- 2.4 GHz ISM Band
- IEEE 802.11b and 802.11g Wireless LAN
- IEEE 802.11n (Pre-N, Draft-N) Applications
- WiFi & Wireless Video Systems
- Wireless Video Systems & Multipoint and Mobile Applications

Fairview Microwave
301 Leora Ln., Suite 100
Lewisville, TX 75056
Tel: 1-800-715-4396 / (972) 649-6678
Fax: (972) 649-6689
www.fairviewmicrowave.com
sales@fairviewmicrowave.com

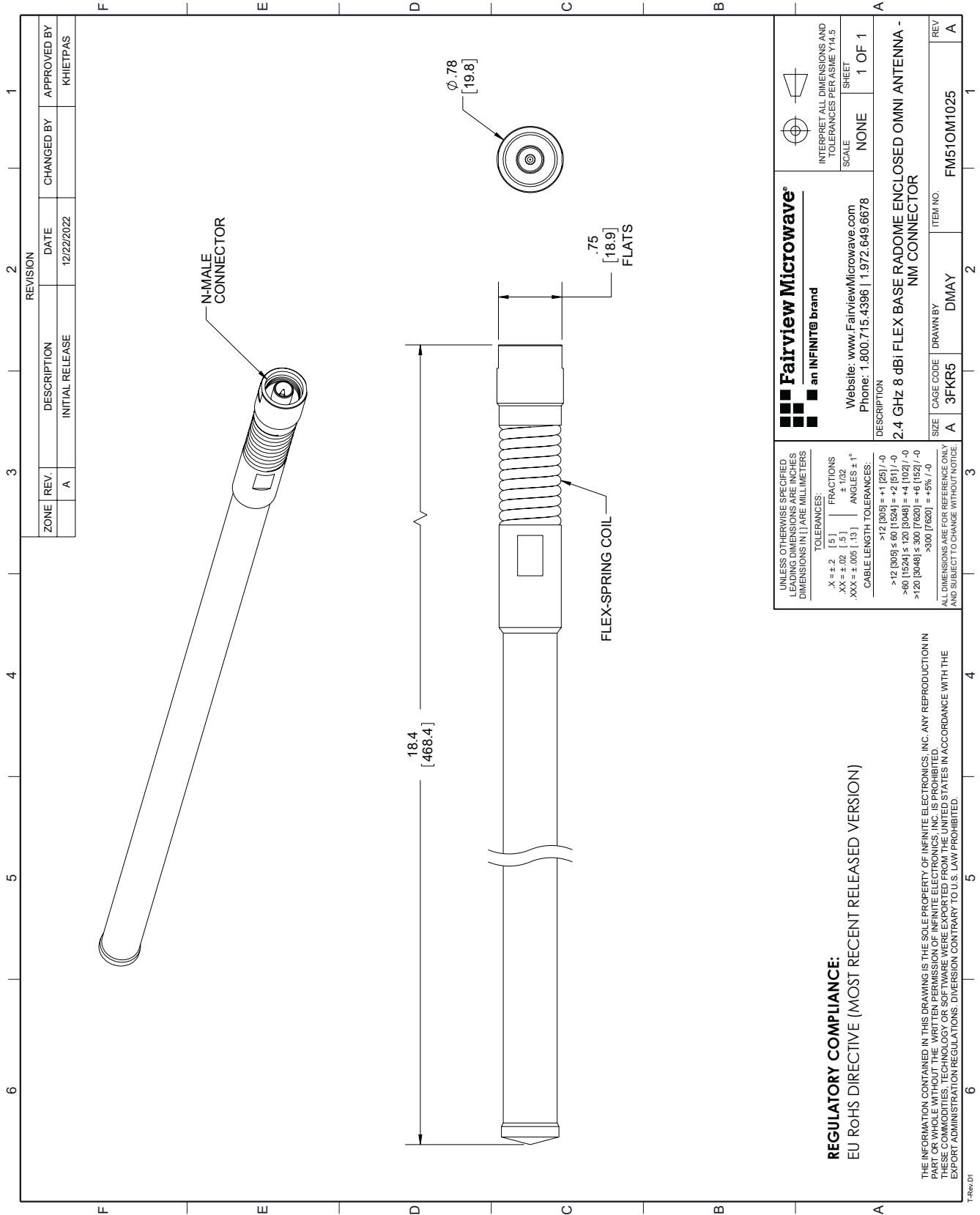
7.4 dBi Omni Antenna 2.4-2.5 GHz, N Type Male Fiberglass Radome, 2:1 Max VSWR from Fairview Microwave is in-stock and available to ship same-day. All of our RF/microwave products are available off-the-shelf from our ISO 9001:2008 certified facilities in Lewisville, Texas. Fairview Microwave is RF on-demand.

For additional information on this product, please click the following link: [7.4 dBi Omni Antenna 2.4-2.5 GHz, N Type Male Fiberglass Radome, 2:1 Max VSWR FM510M1025](#)

URL: <https://www.fairviewmicrowave.com/7.4-dbi-omni-antenna-2.4-2.5-ghz-n-tyfm-male-2-1-max-vswr-fm510m1025-p.aspx>

The information contained in this document is accurate to the best of our knowledge and representative of the part described herein. It may be necessary to make modifications to the part and/or the documentation of the part, in order to implement improvements. Fairview Microwave reserves the right to make such changes as required. Unless otherwise stated, all specifications are nominal. Fairview Microwave does not make any representation or warranty regarding the suitability of the part described herein for any particular purpose, and Fairview Microwave does not assume any liability arising out of the use of any part or documentation.





Fairview Microwave
an INFINIT[®] brand

Website: www.FairviewMicrowave.com
Phone: 1.800.715.4396 | 1.972.649.6678

INTERPRET ALL DIMENSIONS AND TOLERANCES PER ASME Y14.5
SCALE NONE SHEET 1 OF 1

DESCRIPTION
2.4 GHZ 8 dBI FLEX BASE RADOME ENCLOSED OMNI ANTENNA - NM CONNECTOR

SIZE	CAGE CODE	DRAWN BY	ITEM NO.
A	3FKR5	DMAY	FM510M1025

REV A

UNLESS OTHERWISE SPECIFIED, DIMENSIONS ARE IN INCHES. DIMENSIONS IN PARENTHESES ARE IN MILLIMETERS.

TOLERANCES:
 .X = ±.2 [5] FRACTIONS
 .XX = ±.02 [.5] ±.032
 .XXX = ±.005 [.13] ANGLES ± 1°

CABLE LENGTH TOLERANCES:
 >12 [305] = ±1 [25] / -0
 >12 [305] ≤ 60 [1524] = +2 [51] / -0
 >60 [1524] ≤ 120 [3048] = +4 [102] / -0
 >120 [3048] ≤ 300 [7620] = +6 [152] / -0
 >300 [7620] = +5% / -0

ALL DIMENSIONS ARE FOR REFERENCE ONLY AND SUBJECT TO CHANGE WITHOUT NOTICE.

REGULATORY COMPLIANCE:
EU RoHS DIRECTIVE (MOST RECENT RELEASED VERSION)

THE INFORMATION CONTAINED IN THIS DRAWING IS THE SOLE PROPERTY OF INFINITE ELECTRONICS, INC. ANY REPRODUCTION IN PART OR WHOLE WITHOUT THE WRITTEN PERMISSION OF INFINITE ELECTRONICS, INC. IS PROHIBITED.
 EXPORT RESTRICTIONS: EXPORT OF THIS DRAWING OR PARTS THEREOF IS PROHIBITED IN ACCORDANCE WITH THE EXPORT ADMINISTRATION REGULATIONS. DIVERSION CONTRARY TO U.S. LAW PROHIBITED.