

2.4 GHz 9 dBi Yagi Antenna

The Fairview Microwave FM51YA1001 Radome Enclosed Yagi WiFi Antenna features high gain and a 60° beam-width. It is ideally suited for directional and multipoint IEEE 802.11b, 802.11g and 802.11n wireless LANs, Bluetooth®, public wireless hotspot applications and other systems operating in the 2.4GHz ISM band. The unique design of this antenna allows it to be installed for either vertical or horizontal polarization.

This WiFi antenna is enclosed within a UV-stable, UL flame rated radome for all-weather operation. The FM51YA1001 antenna is supplied with a 60 degree tilt and swivel mast mount kit.

Configuration

Design	Yagi
Gain	9 to 9 dBi
Polarization	Vertical or Horizontal
Cable Type	Coax Cable
Cable Length	12 in [304.8 mm]
Connector Type	N Female
Number of Ports	1
Lightning Protection	DC Short

Electrical Specifications

Description	Min	Typ	Max	Units
Input VSWR			1.5:1	
Impedance		50		Ohms
Gain		9		dBi
Input Power			50	Watts

Specifications by Frequency

Description	Band 1	Band 2	Band 3	Band 4	Band 5	Units
Range	2.4-2.5					GHz
Gain	9					dBi
Horiz. Beam Width	60					Degrees
Vert. Beam Width	60					Degrees
Max Input Power	50					Watts

Mechanical Specifications

Radome Material	Polymer
Size	
Length	6 in [152.4 mm]
Width	3 in [76.2 mm]
Height	3 in [76.2 mm]
Mounting Mast Diameter	1.25 to 2 in [31.75 to 50.80 mm]
Weight	0.606 lbs [274.88 g]

Mechanical Specification Notes:
Radome material is UV -inhibited Polymer.



Features:

- 12 inch coax lead terminated with a N-Female Connector
- UV-stable, UL flame rated radome with 60° beam-width
- DC Short lightning protection
- Light weight, & includes tilt and swivel mast mount
- Can be installed for either vertical or horizontal polarization

Applications:

- 2.4 GHz ISM Band
- IEEE 802.11b, 802.11g, IEEE 802.11n Wireless LAN applications
- Directional and multipoint applications
- Bluetooth® & public wireless hotspot
- WiFi & wireless video systems

Fairview Microwave
301 Leora Ln., Suite 100
Lewisville, TX 75056
Tel: 1-800-715-4396 / (972) 649-6678
Fax: (972) 649-6689
www.fairviewmicrowave.com
sales@fairviewmicrowave.com

Environmental Specifications

Temperature

Operating Range -20 to +60 deg C

Wind Loading 150 MPH [241.4 KPH]

Compliance Certifications (see [product page](#) for current document)

Plotted and Other Data

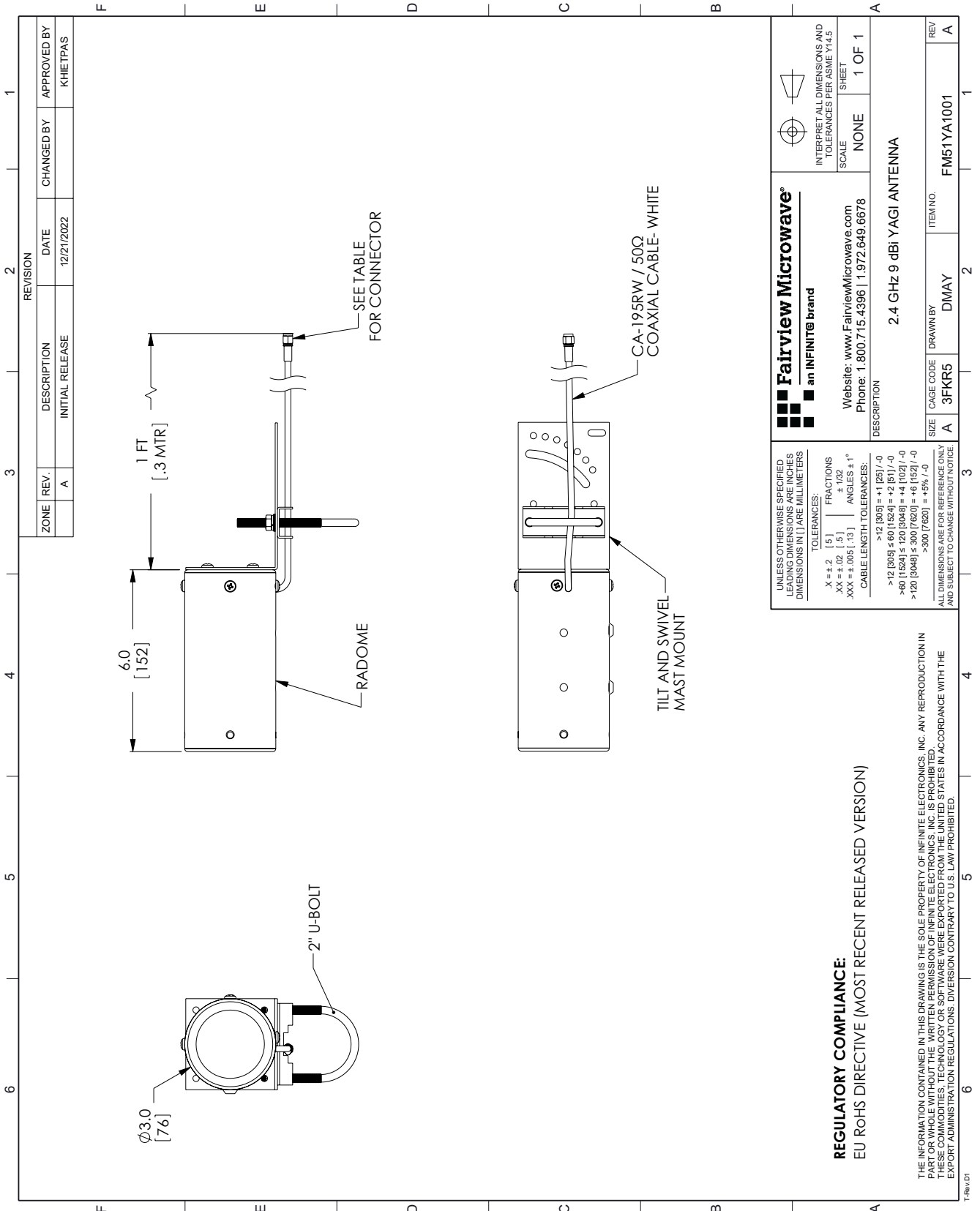
Notes:

2.4 GHz 9 dBi Yagi Antenna from Fairview Microwave is in-stock and available to ship same-day. All of our RF/microwave products are available off-the-shelf from our ISO 9001:2008 certified facilities in Lewisville, Texas. Fairview Microwave is RF on-demand.

For additional information on this product, please click the following link: [2.4 GHz 9 dBi Yagi Antenna FM51YA1001](#)

URL: <https://www.fairviewmicrowave.com/single-antenna-9-dbi-gain-n-fm51ya1001-p.aspx>

The information contained in this document is accurate to the best of our knowledge and representative of the part described herein. It may be necessary to make modifications to the part and/or the documentation of the part, in order to implement improvements. Fairview Microwave reserves the right to make such changes as required. Unless otherwise stated, all specifications are nominal. Fairview Microwave does not make any representation or warranty regarding the suitability of the part described herein for any particular purpose, and Fairview Microwave does not assume any liability arising out of the use of any part or documentation.



REVISION		DATE	APPROVED BY
ZONE	REV.	DESCRIPTION	CHANGED BY
	A	INITIAL RELEASE	KHIE/PAS
			12/21/2022

 Fairview Microwave an INFINIT [®] brand		 INTERPRET ALL DIMENSIONS AND TOLERANCES PER ASME Y14.5
Website: www.FairviewMicrowave.com Phone: 1-800-715-4396 1-972-649-6678		SCALE: NONE SHEET: 1 OF 1
DESCRIPTION: 2.4 GHz 9 dBi YAGI ANTENNA		
SIZE: A	CAGE CODE: 3FKR5	ITEM NO.: FM51YA1001
REV: A	DRAWN BY: DMAY	REV: A

UNLESS OTHERWISE SPECIFIED, DIMENSIONS ARE IN INCHES. DIMENSIONS IN PARENTHESES ARE IN MILLIMETERS.

TOLERANCES:

.X ± .2 [.5] FRACTIONS ± .132
 .XX ± .02 [.5] ANGLES ± 1°
 .XXX ± .005 [.13]

CABLE LENGTH TOLERANCES:

>12 [305] = +1 [25] / -0
 >12 [305] ≤ 60 [1524] = +2 [51] / -0
 >60 [1524] ≤ 120 [3048] = +4 [102] / -0
 >120 [3048] ≤ 300 [7620] = +6 [152] / -0
 >300 [7620] = +5% / -0

ALL DIMENSIONS ARE FOR REFERENCE ONLY AND SUBJECT TO CHANGE WITHOUT NOTICE.

REGULATORY COMPLIANCE:
 EU RoHS DIRECTIVE (MOST RECENT RELEASED VERSION)

THE INFORMATION CONTAINED IN THIS DRAWING IS THE SOLE PROPERTY OF INFINITE ELECTRONICS, INC. ANY REPRODUCTION IN PART OR WHOLE WITHOUT THE WRITTEN PERMISSION OF INFINITE ELECTRONICS, INC. IS PROHIBITED. THIS DOCUMENT IS UNCLASSIFIED AND IS NOT SUBJECT TO EXPORT ADMINISTRATION REGULATIONS. DIVERSION CONTRARY TO U.S. LAW PROHIBITED.