

### 2400-2500, 5150-7125 MHz Wi-Fi 6E Flat Panel MIMO Antenna, 6 dBi Gain, 4 N Type Male Connectors

The FMANFP1038 Wi-Fi 6e Antenna from Fairview Microwave is a high performance directional antenna designed for the 2400 MHz to 7125 MHz bands and is available to ship same day. It is a UV protected, outdoor rated antenna with directional pattern. The FMANFP1038 is ideally suited for 802.11 protocols including 802.11ax as well as Zigbee, Bluetooth and is 4x4 MIMO capable.

The Fairview Microwave high performance FMANFP1038 is a rugged antenna providing broad coverage, low latency, increased network capacity and 6 dBi gain. This 4 port N Male directional antenna is suitable for commercial radios and access points in public and private networks that are equipped with N Type connectors.

This Wi-Fi 6e FMANFP1038 antenna with 4 N Male connectors, as well as our wide selection of superior quality RF parts, ships same day. Contact our knowledgeable and friendly technical support and sales staff for your answers on antennas or other Fairview Microwave products.

#### Configuration

Design	Flat Panel
Gain	6 dBi
Polarization	Vertical
Cable Type	RG58/U
Cable Length	36 in [914.4 mm]
Connector Type	N Male
Number of Ports	4

#### Electrical Specifications

Description	Min	Typ	Max	Units
Frequency Range	2,400		7,125	MHz
Input VSWR			2:1	
Impedance		50		Ohms
Input Power			50	Watts

#### Specifications by Frequency

Description	Band 1	Band 2	Band 3	Band 4	Band 5	Units
Range	2.4-2.5	5.15-7.125				GHz
Gain	6	6				dBi
Horiz. Beam Width	105	120				Degrees
Vert. Beam Width	60	55				Degrees



#### Features:

- N Type Male Connector
- 4 x Vertical Polarization
- 4x4 MIMO Functionality
- Outdoor Rated Flat Panel Antenna
- 2.4 GHz, 5 GHz, 6 GHz Wi-Fi Bands
- 6 dBi gain

#### Applications:

- Infotainment systems, Routers, Wi-Fi hotspots, HD video transmission, Gateways, Dash cameras, Public transportation
- Connected cars or self-driving cars, Fleet management, Logistics
- Public Safety Networks
- Zigbee, Bluetooth, Wi-Fi

Fairview Microwave  
301 Leora Ln., Suite 100  
Lewisville, TX 75056  
Tel: 1-800-715-4396 / (972) 649-6678  
Fax: (972) 649-6689  
[www.fairviewmicrowave.com](http://www.fairviewmicrowave.com)  
[sales@fairviewmicrowave.com](mailto:sales@fairviewmicrowave.com)

### Mechanical Specifications

Radome Material	UV Resistant ABS
<b>Size</b>	
Length	9 in [228.6 mm]
Width	4.4 in [111.76 mm]
Height	1.2 in [30.48 mm]
Weight	3 lbs [1.36 kg]
Color	White

### Environmental Specifications

#### Temperature

Operating Range -40 to +70 deg C

Humidity 5 to 95

### Compliance Certifications (see [product page](#) for current document)

### Plotted and Other Data

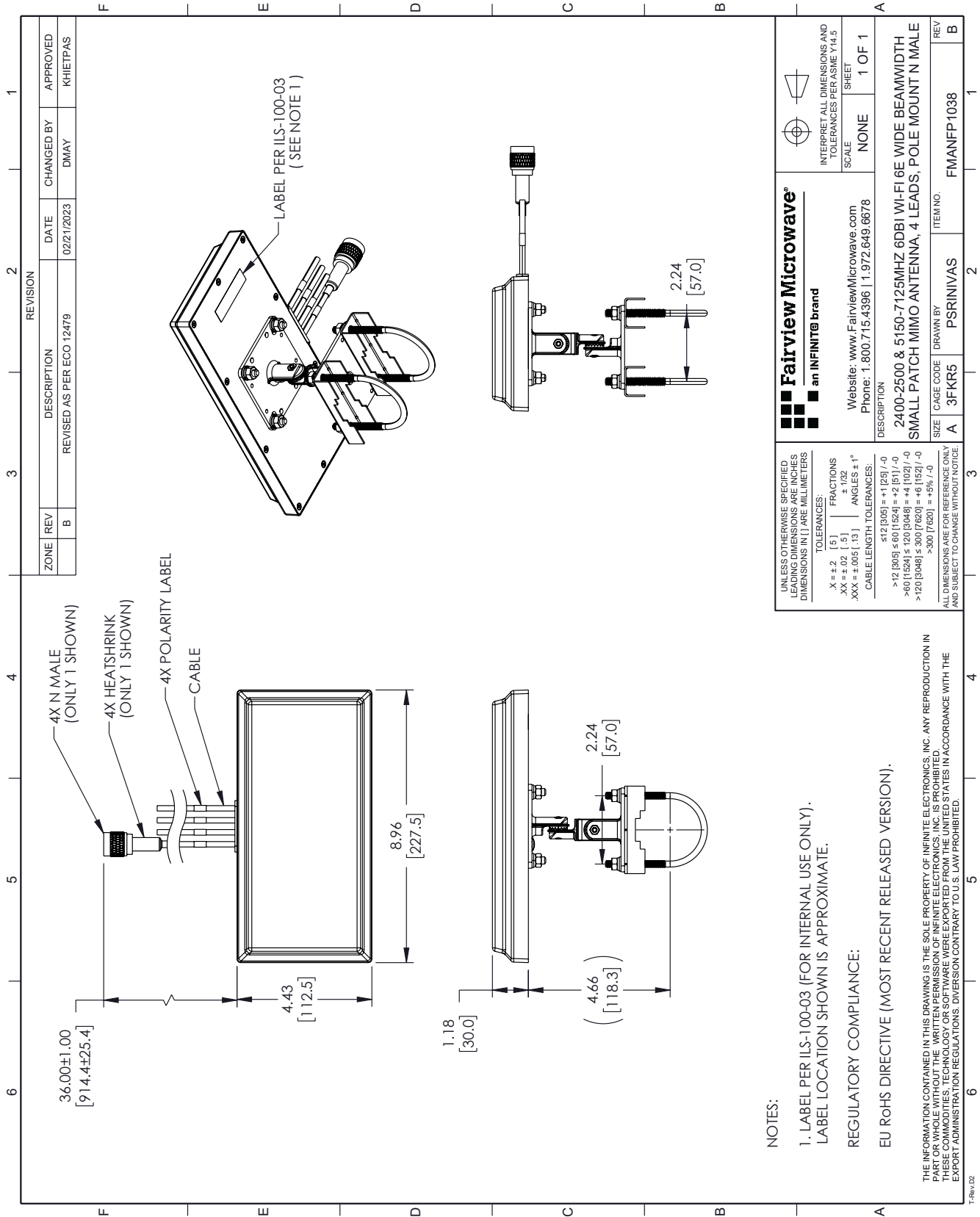
Notes:

2400-2500, 5150-7125 MHz Wi-Fi 6E Flat Panel MIMO Antenna, 6 dBi Gain, 4 N Type Male Connectors from Fairview Microwave is in-stock and available to ship same-day. All of our RF/microwave products are available off-the-shelf from our ISO 9001:2008 certified facilities in Lewisville, Texas. Fairview Microwave is RF on-demand.

For additional information on this product, please click the following link: [2400-2500, 5150-7125 MHz Wi-Fi 6E Flat Panel MIMO Antenna, 6 dBi Gain, 4 N Type Male Connectors FMANFP1038](#)

URL: <https://www.fairviewmicrowave.com/2400-2500-5150-7125-mhz-wi-fi-6e-flat-panel-mimo-antenna-6-dbi-gain-4-n-type-male-connectors-fmanfp1038-p.aspx>

The information contained in this document is accurate to the best of our knowledge and representative of the part described herein. It may be necessary to make modifications to the part and/or the documentation of the part, in order to implement improvements. Fairview Microwave reserves the right to make such changes as required. Unless otherwise stated, all specifications are nominal. Fairview Microwave does not make any representation or warranty regarding the suitability of the part described herein for any particular purpose, and Fairview Microwave does not assume any liability arising out of the use of any part or documentation.



REVISION		DATE	CHANGED BY	APPROVED
ZONE	REV	DESCRIPTION		
	B	REVISED AS PER ECO 12479	DMAY	KHIETPAS

<p><b>Fairview Microwave</b> an INFINIT<sup>®</sup> brand</p>		<p>INTERPRET ALL DIMENSIONS AND TOLERANCES PER ASME Y14.5</p>
Website: <a href="http://www.FairviewMicrowave.com">www.FairviewMicrowave.com</a> Phone: 1.800.715.4396   1.972.649.6678		SCALE: NONE SHEET: 1 OF 1
DESCRIPTION: 2400-2500 & 5150-7125MHZ 6DBI WI-FI 6E WIDE BEAMWIDTH SMALL PATCH MIMO ANTENNA, 4 LEADS, POLE MOUNT N MALE		
SIZE	CAGE CODE	ITEM NO.
A	3FKR5	FMANFP1038

UNLESS OTHERWISE SPECIFIED, DIMENSIONS ARE IN INCHES AND DIMENSIONS IN LARGE MILLIMETERS.

TOLERANCES:  
 .X = ±.2 (.5) FRACTIONS ±.152 (3.95)  
 .XX = ±.02 (.5) ANGLES ± 1°  
 .XXX = ±.005 (.13)

CABLE LENGTH TOLERANCES:  
 ≤ 12 [305] = +1 [25] / -0  
 > 12 [305] ≤ 60 [1524] = +2 [51] / -0  
 > 60 [1524] ≤ 120 [3048] = +4 [102] / -0  
 > 120 [3048] ≤ 300 [7620] = +6 [152] / -0  
 > 300 [7620] = +5% / -0

ALL DIMENSIONS ARE FOR REFERENCE ONLY AND SUBJECT TO CHANGE WITHOUT NOTICE.

NOTES:  
 1. LABEL PER ILS-100-03 (FOR INTERNAL USE ONLY). LABEL LOCATION SHOWN IS APPROXIMATE.  
 REGULATORY COMPLIANCE:  
 EU RoHS DIRECTIVE (MOST RECENT RELEASED VERSION).

THE INFORMATION CONTAINED IN THIS DRAWING IS THE SOLE PROPERTY OF INFINITE ELECTRONICS, INC. ANY REPRODUCTION IN WHOLE OR IN PART WITHOUT THE WRITTEN PERMISSION OF INFINITE ELECTRONICS, INC. IS PROHIBITED. THESE COMMODITIES, TECHNOLOGY OR SOFTWARE WERE EXPORTED FROM THE UNITED STATES IN ACCORDANCE WITH THE EXPORT ADMINISTRATION REGULATIONS. DIVERSION CONTRARY TO U.S. LAW PROHIBITED.