

## 136-174 MHz Rubber Duck Antenna, 1.8 dBi gain, SMA-Female Connector, Vertical Polarization

Fairview Microwave's FMANRBD1026 is a vertical polarized antenna that ships same day from our ISO 9001:2015 certified facility. This directional antenna has SMA female connector. The FMANRBD1026 is a single band antenna operating from 136 to 174 MHz with 1.8 dBi gain.

Fairview Microwave's antenna with 136 to 174 MHz frequency range has a maximum input VSWR of 1.5:1. The FMANRBD1026 antenna has a black radome made of TPE, an overall length of 4.32 in, width of 0.500 in, and weighs 0.022 lbs.

Use our on-line ordering system to purchase your FMANRBD1026 antenna 24 hours a day with same-day shipping and no MOQs (minimum order quantities).

### Configuration

Design	Rubber Duck
Gain	1.8
Polarization	Vertical
Connector Type	SMA Female

### Electrical Specifications

Description	Min	Typ	Max	Units
Frequency Range	136		174	MHz
Input VSWR			1.5:1	
Impedance		50		Ohms
Gain		1.8		dBi
Input Power			50	Watts

### Mechanical Specifications

Radome Material	TPE
<b>Size</b>	
Length	4.32 in [109.73 mm]
Width	0.5 in [12.7 mm]
Height	0.5 in [12.7 mm]
Weight	0.022 lbs [9.98 g]

### Environmental Specifications

<b>Temperature</b>	
Operating Range	-40 to +80 deg C

**Compliance Certifications** (see [product page](#) for current document)

### Plotted and Other Data

Notes:



### Features:

- 136 MHz to 174 MHz, 1.8 dBi Gain
- SMA-Female connector
- Heliflex whip antenna
- Plug and play
- 50W power handling
- VSWR < 1.5:1
- Vertical polarization
- Black

### Applications:

- PtP or PtMP applications
- Trunking for two-way radio comms
- VHF applications
- Public Safety / Emergency services
- Marine / Rail road communications
- P-25 applications exclusively supported
- Land mobile radio (LMR)
- Fixed and mobile services

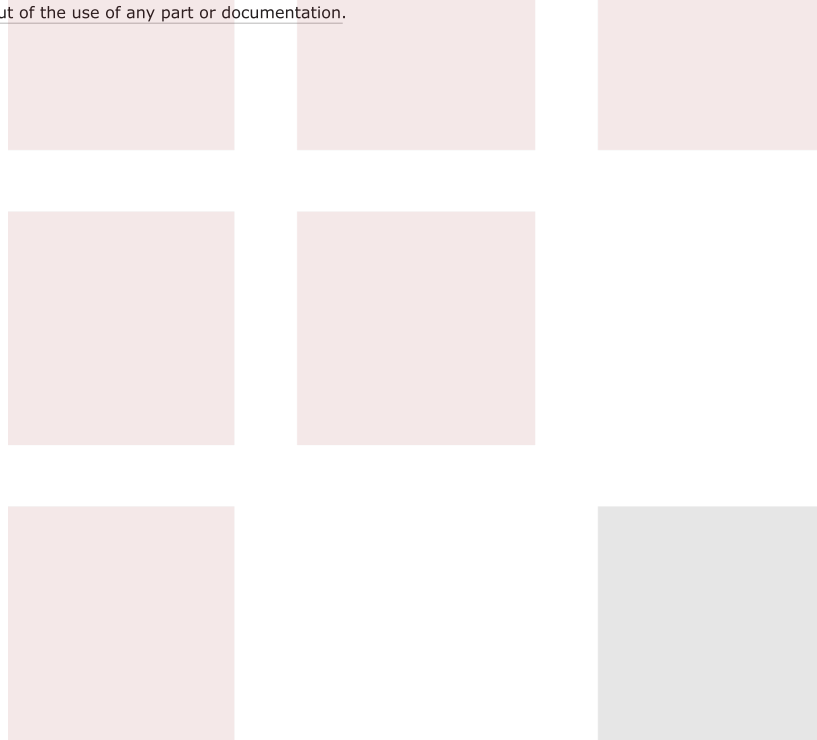
Fairview Microwave  
 301 Leora Ln., Suite 100  
 Lewisville, TX 75056  
 Tel: 1-800-715-4396 / (972) 649-6678  
 Fax: (972) 649-6689  
[www.fairviewmicrowave.com](http://www.fairviewmicrowave.com)  
[sales@fairviewmicrowave.com](mailto:sales@fairviewmicrowave.com)

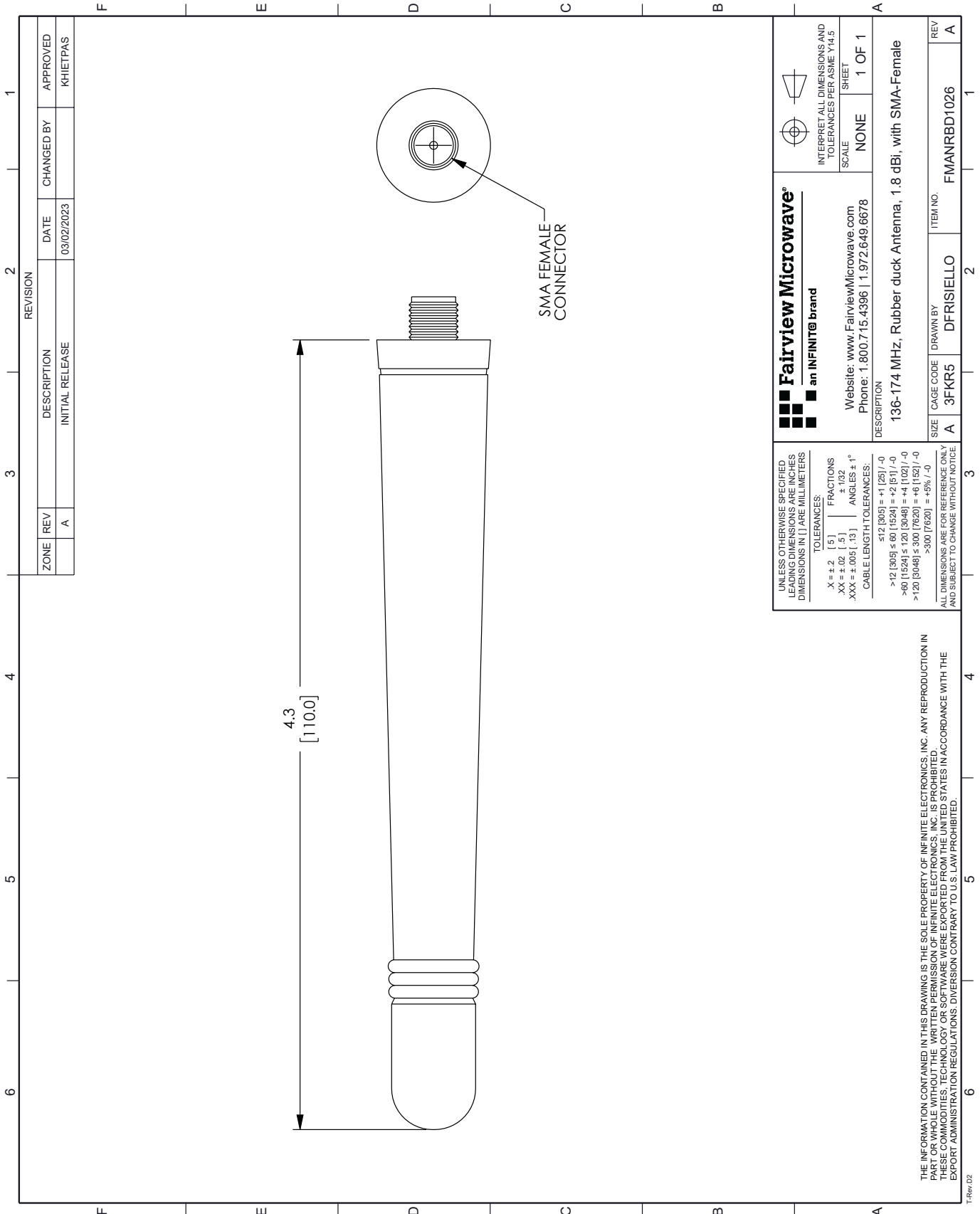
136-174 MHz Rubber Duck Antenna, 1.8 dBi gain, SMA-Female Connector, Vertical Polarization from Fairview Microwave is in-stock and available to ship same-day. All of our RF/microwave products are available off-the-shelf from our ISO 9001:2008 certified facilities in Lewisville, Texas. Fairview Microwave is RF on-demand.

For additional information on this product, please click the following link: [136-174 MHz Rubber Duck Antenna, 1.8 dBi gain, SMA-Female Connector, Vertical Polarization FMANRBD1026](#)

URL: <https://www.fairviewmicrowave.com/1.8-dbi-rubber-duck-antenna-136-174-mhz-sma-connector-fmanrbd1026-p.aspx>

The information contained in this document is accurate to the best of our knowledge and representative of the part described herein. It may be necessary to make modifications to the part and/or the documentation of the part, in order to implement improvements. Fairview Microwave reserves the right to make such changes as required. Unless otherwise stated, all specifications are nominal. Fairview Microwave does not make any representation or warranty regarding the suitability of the part described herein for any particular purpose, and Fairview Microwave does not assume any liability arising out of the use of any part or documentation.





ZONE		REVISION		APPROVED	
REV	DESCRIPTION	DATE	CHANGED BY	KHETPAS	
A	INITIAL RELEASE	03/02/2023			

<p><b>Fairview Microwave®</b> an INFINITE® brand</p> <p>Website: <a href="http://www.FairviewMicrowave.com">www.FairviewMicrowave.com</a> Phone: 1.800.715.4396   1.972.649.6678</p>		<p>INTERPRET ALL DIMENSIONS AND TOLERANCES PER ASME Y14.5</p> <p>SCALE: NONE SHEET: 1 OF 1</p>	
<p>DESCRIPTION: 136-174 MHz, Rubber duck Antenna, 1.8 dBi, with SMA-Female</p>			
SIZE	CAGE CODE	DRAWN BY	ITEM NO.
A	3FKR5	DFRISIELLO	FMANRBD1026

UNLESS OTHERWISE SPECIFIED, LEADING DIMENSIONS ARE INCHES DIMENSIONS IN [ ] ARE MILLIMETERS

TOLERANCES:

.X = ± .2	[.5]	FRACTIONS
.XX = ± .02	[.5]	± 1/32
.XXX = ± .005	[.13]	ANGLES ± 1°

CABLE LENGTH TOLERANCES:

≤ 12 [305]	± .125 / -0
> 12 [305] ≤ 60 [1524]	± .25 / -0
> 60 [1524] ≤ 120 [3048]	± .5 / -0
> 120 [3048] ≤ 300 [7620]	± 1.0 / -0
> 300 [7620]	± 2.0 / -0

ALL DIMENSIONS ARE FOR REFERENCE ONLY AND SUBJECT TO CHANGE WITHOUT NOTICE

THE INFORMATION CONTAINED IN THIS DRAWING IS THE SOLE PROPERTY OF INFINITE ELECTRONICS, INC. ANY REPRODUCTION IN PART OR WHOLE WITHOUT THE WRITTEN PERMISSION OF INFINITE ELECTRONICS, INC. IS PROHIBITED. THESE COMMODITIES, TECHNOLOGY OR SOFTWARE WERE EXPORTED FROM THE UNITED STATES IN ACCORDANCE WITH THE EXPORT ADMINISTRATION REGULATIONS. DIVERSION CONTRARY TO U.S. LAW PROHIBITED.

T-Rev D2