

**144 to 148 MHz and 300 to 450 MHz, 9.5/11.5 dBi
Aluminum Alloy Yagi Antenna with N Female,
Vertical Polarization, 1 Port, 1.5 VSWR**

Description

Fairview Microwave’s FMANYG1000 9.5/11.5 dBi aluminum alloy yagi antenna, with N female connector, is an economical yet high-Performance antenna designed for high-power applications. This high gain 9.5/11.5 dBi antenna transmits high-power signals, increasing the signal strength and thus providing improved coverage, better-broadcast control, and faster speed. This yagi antenna can output frequencies from 144 to 148 and 300 to 450 MHz, which is useful for military communications, trunking, public safety, industrial communication, and amateur radio applications.

Fairview Microwave’s FMANYG1000 yagi antenna elements are compactly packaged, thus transportation and installation become easier. It has a 1.5 VSWR that results in the best power transfer and reduced losses. This 144 to 148 and 300 to 450 MHz VHF/UHF antenna made from strong and lightweight aluminum alloy has high directional characteristics. This yagi antenna uses vertical polarization to transmit signals, thus reducing interference and performing better at lower heights.

FMANYG1000 comes with a N female connector, which is threaded and weatherproof that ensuring a reliable physical connection. The yagi antenna has 1 port to connect an external circuit with 100W maximum input power per port. All components of this 9.5/11.5 dBi antenna are DC grounded for lightning protection, rugged outdoor design, and have a high-power handling capacity .

Fairview Microwave’s FMANYG1000 antenna with a 9.5/11.5 dBi maximum gain is ideal for LMR, military, airports, construction, mining, commercial applications, and radio users. Aluminum alloy yagi antenna from Fairview Microwave comes in compact packaging for lower shipping costs. Fairview Microwave’s 144 to 148 and 300 to 450 MHz, 9.5/11.5 dBi aluminum alloy yagi antenna with a N female connector is in stock and ready to ship the same day. Contact our knowledgeable and friendly technical support and sales staff for your answers on antennas or other Fairview Microwave products.

Configuration

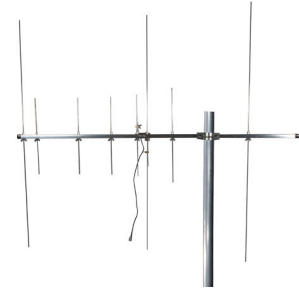
Design	Yagi
Gain	9.5 dBi
Polarization	Vertical
Connector Type	N Female
Number of Ports	1
Lightning Protection	DC Ground

Electrical Specifications

Description	Min	Typ	Max	Units
Input VSWR			1.5:1	
Impedance		50		Ohms
Input Power			100	Watts

Specifications by Frequency

Description	Band 1	Band 2	Band 3	Band 4	Band 5	Units
Range	0.144-0.148	0.3-0.45				GHz



Features:

- Frequency coverage for 144 MHz to 148 MHz and 300 MHz to 450 MHz with Type N Female connector and gain 9.5 dBi / 11.5 dBi antennas
- Covers 2-Meter amature band of 145MHz VHF band
- Easy and quick time to installations with small packaging
- Weather and corrsion free made of high-grade aluminum alloys
- 100 W max input power
- Vertical Polarization

Applications:

- Outdoor point-to-point (PtP) or point-to-multipoint (PtMP) applications
- 2-meter band applications of 145MHz band
- VHF/UHF radio applications supported with Trunking for two-way radio communications
- Public Safety / Emergency services / Marine communications / Rail road communications
- Tetra and P-25 Applications exclusively supported
- Land Mobile Radio (LMR) and Private Mobile Radio (PMR)
- Fixed and mobile services for paging/voice/data in full duplex and half duplex mode

Fairview Microwave
301 Leora Ln., Suite 100
Lewisville, TX 75056
Tel: 1-800-715-4396 / (972) 649-6678
Fax: (972) 649-6689
www.fairviewmicrowave.com
sales@fairviewmicrowave.com

Gain	9.5	11.5	dBi
------	-----	------	-----

Mechanical Specifications

Radome Material	Aluminum Alloy
Size	
Length	0 in [0 mm]
Width	0 in [0 mm]
Height	0 in [0 mm]
Weight	22 lbs [9.98 kg]

Environmental Specifications

Temperature	
Operating Range	-40 to +80 deg C

Compliance Certifications (see [product page](#) for current document)

Plotted and Other Data

Notes:

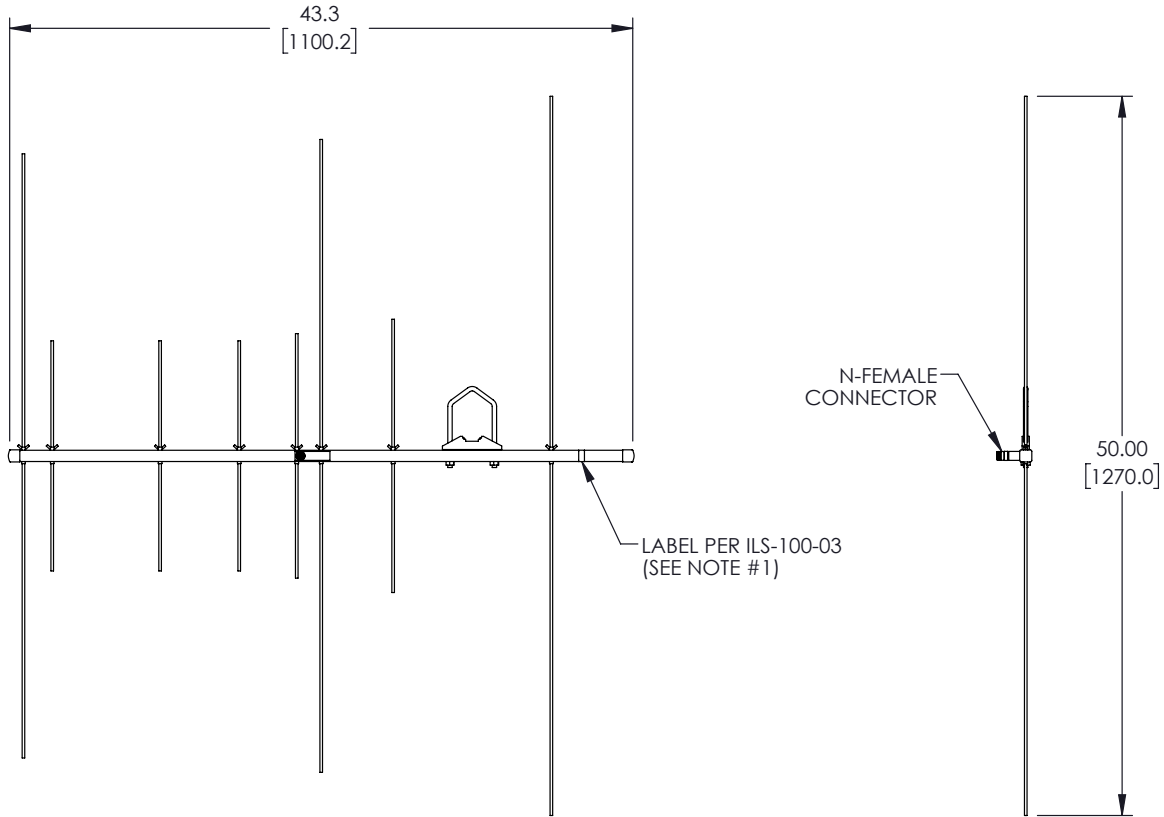
144 to 148 MHz and 300 to 450 MHz, 9.5/11.5 dBi Aluminum Alloy Yagi Antenna with N Female, Vertical Polarization, 1 Port, 1.5 VSWR from Fairview Microwave is in-stock and available to ship same-day. All of our RF/microwave products are available off-the-shelf from our ISO 9001:2008 certified facilities in Lewisville, Texas. Fairview Microwave is RF on-demand.

For additional information on this product, please click the following link: [144 to 148 MHz and 300 to 450 MHz, 9.5/11.5 dBi Aluminum Alloy Yagi Antenna with N Female, Vertical Polarization, 1 Port, 1.5 VSWR FMANYG1000](#)

URL: <https://www.fairviewmicrowave.com/antenna-n-type-connector-fmanyg1000-p.aspx>

The information contained in this document is accurate to the best of our knowledge and representative of the part described herein. It may be necessary to make modifications to the part and/or the documentation of the part, in order to implement improvements. Fairview Microwave reserves the right to make such changes as required. Unless otherwise stated, all specifications are nominal. Fairview Microwave does not make any representation or warranty regarding the suitability of the part described herein for any particular purpose, and Fairview Microwave does not assume any liability arising out of the use of any part or documentation.

REVISIONS			
REV.	DESCRIPTION	DATE	APPROVED
A	INITIAL RELEASE	5/5/2022	KHIETPAS



- NOTES:
1. LABEL PER ILS-100-03 (FOR INTERNAL REFERENCE ONLY).
LABEL LOCATION FOR REFERENCE ONLY.

THESE COMMODITIES, TECHNOLOGY OR SOFTWARE WERE EXPORTED FROM THE UNITED STATES IN ACCORDANCE WITH THE EXPORT ADMINISTRATION REGULATIONS. DIVERSION CONTRARY TO U.S. LAW PROHIBITED.

<p>Fairview Microwave an INFINIT[®] brand</p>	<p>UNLESS OTHERWISE SPECIFIED LEADING DIMENSIONS ARE INCHES DIMENSIONS IN [] ARE MILLIMETERS</p> <p>TOLERANCES: CABLE LENGTH (L) TOLERANCES:</p> <table border="0"> <tr> <td>.X = ±.2 [5.08]</td> <td>FRACTIONS</td> <td>L ≤ 12 [305] = +1 [25] / -0</td> </tr> <tr> <td>.XX = ±.02 [.51]</td> <td>± 1/32</td> <td>12 [305] < L ≤ 60 [1524] = +2 [51] / -0</td> </tr> <tr> <td>.XXX = ±.005 [.13]</td> <td>ANGLES ± 1°</td> <td>60 [1524] < L ≤ 120 [3048] = +4 [102] / -0</td> </tr> <tr> <td></td> <td></td> <td>120 [3048] < L ≤ 300 [7620] = +6 [152] / -0</td> </tr> <tr> <td></td> <td></td> <td>300 [7620] < L = +5%L / -0</td> </tr> </table>		.X = ±.2 [5.08]	FRACTIONS	L ≤ 12 [305] = +1 [25] / -0	.XX = ±.02 [.51]	± 1/32	12 [305] < L ≤ 60 [1524] = +2 [51] / -0	.XXX = ±.005 [.13]	ANGLES ± 1°	60 [1524] < L ≤ 120 [3048] = +4 [102] / -0			120 [3048] < L ≤ 300 [7620] = +6 [152] / -0			300 [7620] < L = +5%L / -0	<p>THIRD-ANGLE PROJECTION</p> <p>THE INFORMATION AND DESIGN IN THIS DOCUMENT IS THE PROPERTY OF FAIRVIEW MICROWAVE CORPORATION. ALL RIGHTS RESERVED.</p>
	.X = ±.2 [5.08]	FRACTIONS	L ≤ 12 [305] = +1 [25] / -0															
.XX = ±.02 [.51]	± 1/32	12 [305] < L ≤ 60 [1524] = +2 [51] / -0																
.XXX = ±.005 [.13]	ANGLES ± 1°	60 [1524] < L ≤ 120 [3048] = +4 [102] / -0																
		120 [3048] < L ≤ 300 [7620] = +6 [152] / -0																
		300 [7620] < L = +5%L / -0																
TITLE	<p>ALL DIMENSIONS SHOWN ARE FOR REFERENCE ONLY.</p>		<p>SHEET 1 OF 1</p> <p>SCALE N/A</p>															
SIZE A	CAGE CODE 3FKR5	DRAWN BY DMAY	ITEM NO. FMANYG1000															
			REV A															

T-Rev.D