

10KV Female Bulkhead Connector Crimp/Solder Attachment for RG58 Cable

The Fairview Microwave FMCN45837 is designed for high voltage applications and is rated to 10KV. This 10KV female bulkhead connector utilizes crimp/solder attachment for the contact. Our 10KV female bulkhead IP67 mated coax connector from Fairview Microwave has an interface type of RG58.

The Fairview Microwave 10KV female bulkhead coaxial connector has a PE (HD) dielectric type. This Fairview Microwave 10KV coax cable connector has a brass body with tinned copper plating. Our 10KV female bulkhead connector uses brass contact with gold over nickel over copper plating material. This 10KV female bulkhead coax RF connector is RoHS and REACH compliant, you can find this 10KV female coax connector datasheet specifications above.

Fairview Microwave standard straight female 10 KV bulkhead connector will ship the same day. Our bulkhead 10KV standard straight female high voltage connector is part of over one million RF, microwave, and millimeter wave components in stock and ready for same-day shipment worldwide. We also build custom standard cable assemblies that will ship quickly from our location.



Configuration:

- 10KV Female Connector
- MIL-STD-202
- Straight Body Geometry
- RG58 Interface Type
- Crimp/Solder Attachment
- Bulkhead

Features:

- Gold over nickel over copper Plated Brass Contact
- IP67
- High Density PE Insulator

Applications:

- General Purpose Test
- Rack and Panel Mount Applications
- Custom Cable Assemblies
- High Voltage Pulsed RF Transmission

Electrical Specifications

Description	Min	Typ	Max	Units
Operating Voltage (DC)			10,000	Vdc
Test Voltage (DC)			15,000	Vdc
Inner Cond. DC Resistance			3	mOhms
Outer Cond. DC Resistance			2	mOhms
Insulation Resistance	1,000			MOhms

Mechanical Specifications

Size	
Length	2.7 in [68.58 mm]
Width/Dia.	0.75 in [19.05 mm]
Height	0.75 in [19.05 mm]
Weight	0.016 lbs [7.26 g]

Material Specifications

Description	Material	Plating
Contact	Brass	Gold over nickel over copper
Insulation	PE (HD)	
Body	Brass	Tinned Copper
Coupling Nut	Brass	Tinned Copper
Gasket	Silicone	
Crimp Sleeve	Brass	Tinned Copper

Fairview Microwave
301 Leora Ln., Suite 100
Lewisville, TX 75056
Tel: 1-800-715-4396 / (972) 649-6678
Fax: (972) 649-6689
www.fairviewmicrowave.com
sales@fairviewmicrowave.com

Environmental Specifications

Temperature

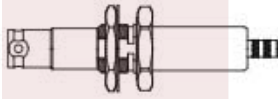




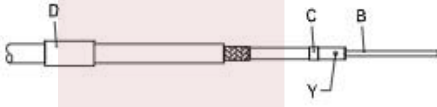
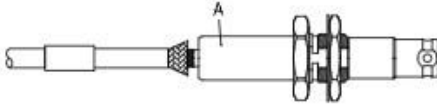
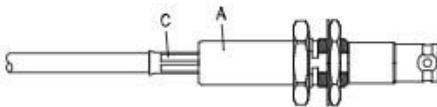
Operating Range	-55 to +85 deg C
Ingress Protection (IP) Rating	IP67
Salt Spray	MIL-STD-202, Method 101, Condiiton B

Compliance Certifications (see [product page](#) for current document)

Plotted and Other Data

Notes:

Assembly Instruction

A	B	C	D
 <p>BODY + LOCK WASHER + GASKET + HEX NUT</p>	 <p>CONTACT PIN</p>	 <p>GASKET</p>	 <p>FERRULE</p>
DIAGRAM		ASSEMBLY INSTRUCTION	
		<p>Step 1: STRIP AS SHOWN.</p>	
		<p>Step 2: SLIDE FERRULE "D" OVER CABLE. Step 3: PUT GASKET "C" AND PIN "B" ON CENTER CONDUCTOR AND SOLDER IN "Y".</p>	
		<p>Step 4: LOOSEN BRAIDING AND SLIDE CONNECTOR "A" IN PLACE.</p>	
		<p>Step 5: SLIDE FERRULE "C" TOWARDS THE CONNECTOR "A" AND CRIMP. (USE 5.5mm/0.217inch HEX SECTION OF INSERT-B)</p>	

10KV Female Bulkhead Connector Crimp/Solder Attachment for RG58 Cable from Fairview Microwave is in-stock and available to ship same-day. All of our RF/microwave products are available off-the-shelf from our ISO 9001:2008 certified facilities in Lewisville, Texas. Fairview Microwave is RF on-demand.

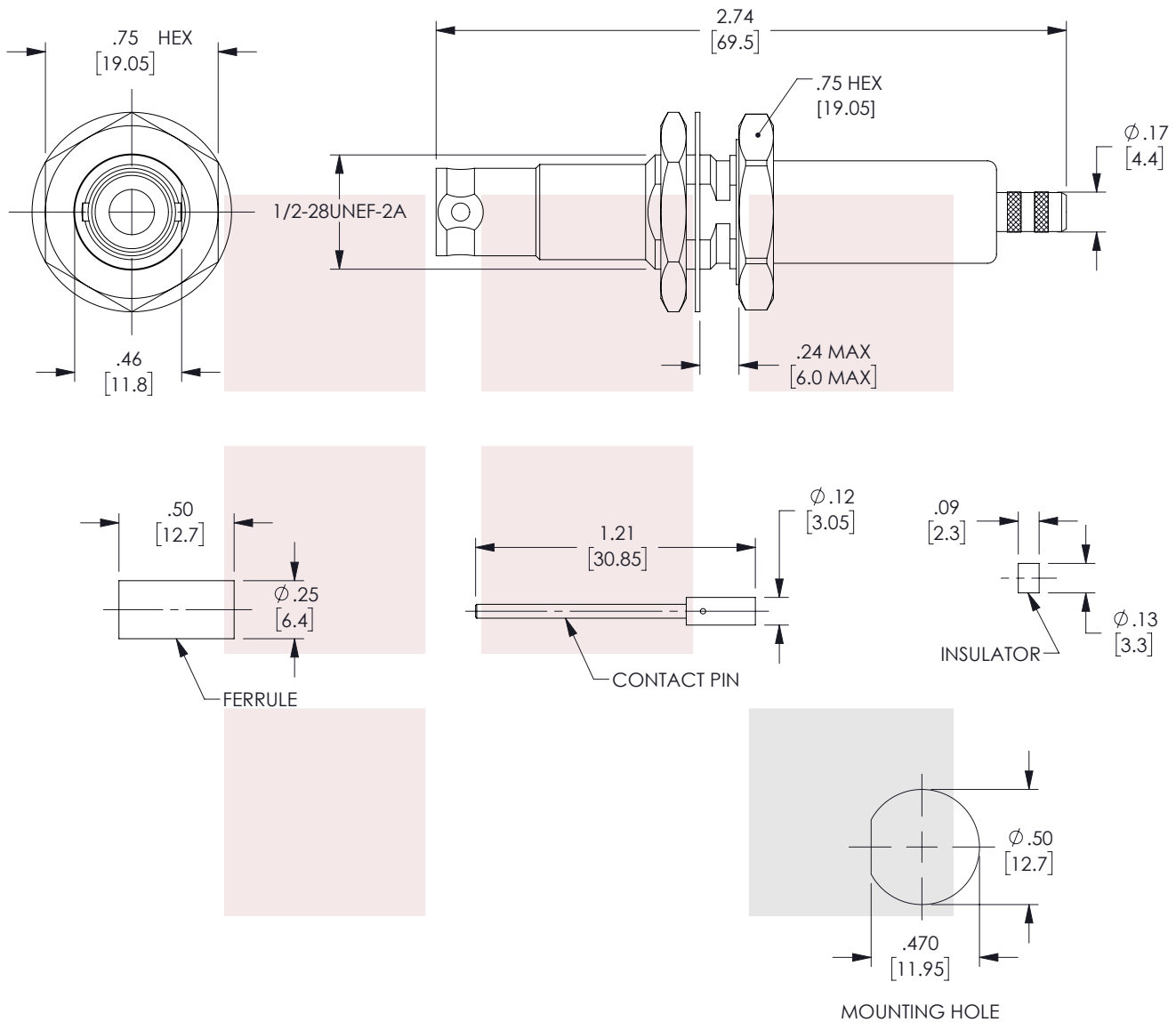
For additional information on this product, please click the following link: [10KV Female Bulkhead Connector Crimp/Solder Attachment for RG58 Cable FMCN45837](#)

URL: <https://www.fairviewmicrowave.com/10kv-female-rg58-connector-fmcn45837-p.aspx>

The information contained in this document is accurate to the best of our knowledge and representative of the part described herein. It may be necessary to make modifications to the part and/or the documentation of the part, in order to implement improvements. Fairview Microwave reserves the right to make such changes as required. Unless otherwise stated, all specifications are nominal. Fairview Microwave does not make any representation or warranty regarding the suitability of the part described herein for any particular purpose, and Fairview Microwave does not assume any liability arising out of the use of any part or documentation.



REVISIONS			
REV.	DESCRIPTION	DATE	APPROVED
A	INITIAL RELEASE	9/15/2022	VJIWATODE



THESE COMMODITIES, TECHNOLOGY OR SOFTWARE WERE EXPORTED FROM THE UNITED STATES IN ACCORDANCE WITH THE EXPORT ADMINISTRATION REGULATIONS. DIVERSION CONTRARY TO U.S. LAW PROHIBITED.

TITLE

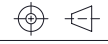
10KV Female Bulkhead Connector Crimp/Solder Attachment for RG58 Cable

UNLESS OTHERWISE SPECIFIED LEADING DIMENSIONS ARE INCHES
DIMENSIONS IN [] ARE MILLIMETERS

TOLERANCES: CABLE LENGTH (L) TOLERANCES:

.X = ±.2 [5.08]	FRACTIONS	L ≤ 12 [305] = +1 [25] / -0
.XX = ±.02 [.51]	± 1/32	12 [305] < L ≤ 60 [1524] = +2 [51] / -0
.XXX = ±.005 [.13]	ANGLES ± 1°	60 [1524] < L ≤ 120 [3048] = +4 [102] / -0
		120 [3048] < L ≤ 300 [7620] = +6 [152] / -0
		300 [7620] < L = +5%L / -0

THIRD-ANGLE PROJECTION



THE INFORMATION AND DESIGN IN THIS DOCUMENT IS THE PROPERTY OF FAIRVIEW MICROWAVE CORPORATION. ALL RIGHTS RESERVED.

SHEET	1	OF	1
-------	---	----	---

ALL DIMENSIONS SHOWN ARE FOR REFERENCE ONLY.

SCALE N/A

SIZE	CAGE CODE	DRAWN BY	ITEM NO.	REV
A	3FKR5	DMAY	FMCN45837	A

T-Rev.D