

SMA Female Active 3x Frequency Multiplier with 2.85 GHz to 4.5 GHz Output

The FMFX2020 is an active Frequency Tripler (x3) module that covers a broad output frequency bandwidth from 2850 MHz to 4500 MHz. Typical performance includes 9 dB conversion gain, 20 dB fundamental Isolation, with an RF input drive level of 0 dBm. DC bias is +12Vdc with 150 mA DC current. Maximum RF input power is +23 dBm with an operational temperature range of -40° C to +85° C. The rugged and compact package assembly supports SMA female connectors. And for highly reliable operation, the model is designed to meet a variety of MIL-STD-202 test conditions including shock, vibration, altitude, and humidity.



Electrical Specifications (TA= 25°C, VDC1 = 12 Vdc, IDC1 = 150 mA, Pin = 0 dBm)

Description	Min	Typ	Max	Units
Input Frequency Range	950		1,500	MHz
Output Frequency Range	2,850		4,500	MHz
Impedance		50		Ohms
Conversion Gain	5	9		dB
Fundamental Isolation*	10	20		dB
2F0 Isolation*	15	25		dB
4F0 Isolation*	20	30		dB
Input VSWR(@ 1200 MHz)		1.1:1	1.5:1	
Output VSWR(@ 3600 MHz)		1.6:1	2.5:1	
Operating DC Voltage 1	10	12	15	V
Operating DC Current 1		150	170	mA

*Isolation with respect to output power level

Mechanical Specifications

Size	
Length	1.25 in [31.75 mm]
Width	0.563 in [14.3 mm]
Height	1.25 in [31.75 mm]
Weight	0.003 lbs [1.36 g]
Output Connector	SMA Female

Environmental Specifications

Temperature	
Operating Range	-40 to +85 deg C
Storage Range	-55 to +105 deg C
Humidity	MIL-STD-202, Method 103B, Condition B
Shock	MIL-STD-202F, Method 213B, Condition B
Vibration	MIL-STD-202F, Method 204D, Condition B
Altitude	MIL-STD-202F, Method 105C, Condition B

Features:

- Active Frequency Tripler (x3)
- 950 to 1500 MHz Input Frequency
- 2850 to 4500 MHz Output Frequency
- Conversion Gain 9 dB typ
- Fundamental Isolation 20 dB typ
- RF Input Drive Level: 0 dBm
- Max RF Input Power: +23 dBm
- DC Bias: +12Vdc @ 150 mA
- SMA Female Connectors
- -40° C to +85° C Operating Temperature
- 50 Ohm Design
- Rugged Design meets MIL-STD-202 Test Conditions

Applications:

- Aerospace & Defense
- Test & Measurement
- Microwave Radio Systems
- Military & Commercial Communication Systems
- Research & Development
- SATCOM
- Wireless Communications

Fairview Microwave
 301 Leora Ln., Suite 100
 Lewisville, TX 75056
 Tel: 1-800-715-4396 / (972) 649-6678
 Fax: (972) 649-6689
www.fairviewmicrowave.com
sales@fairviewmicrowave.com

Compliance Certifications (see [product page](#) for current document)

Plotted and Other Data

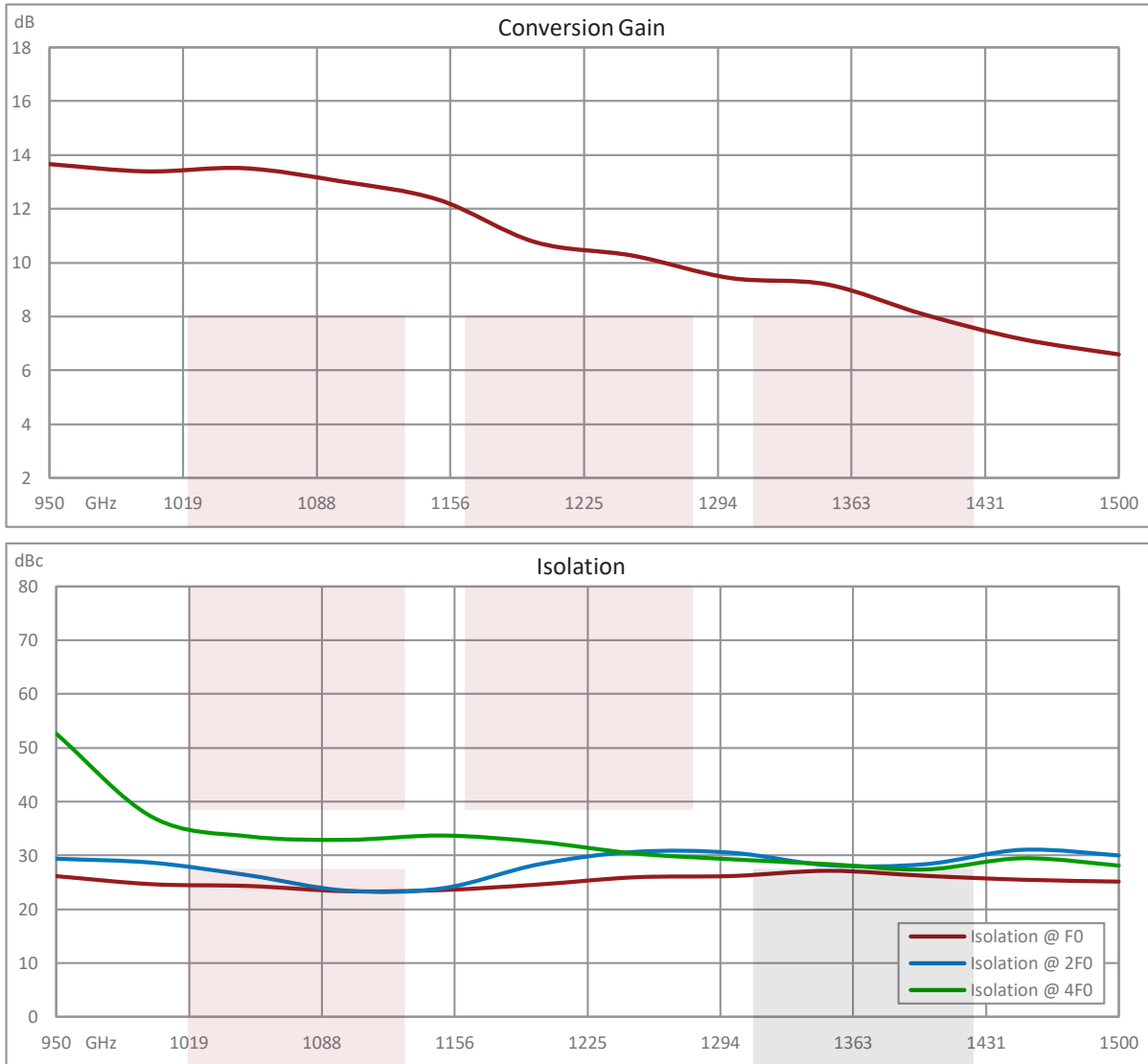
Notes:

Absolute Maximum Rating

Absolute Maximum Ratings

Parameter	Maximum
RF Input Power	+23dB
Operating Temperature	-40 °C to +85 °
Storage Temperature	-55 °C to +105 °

Typical Performance Data

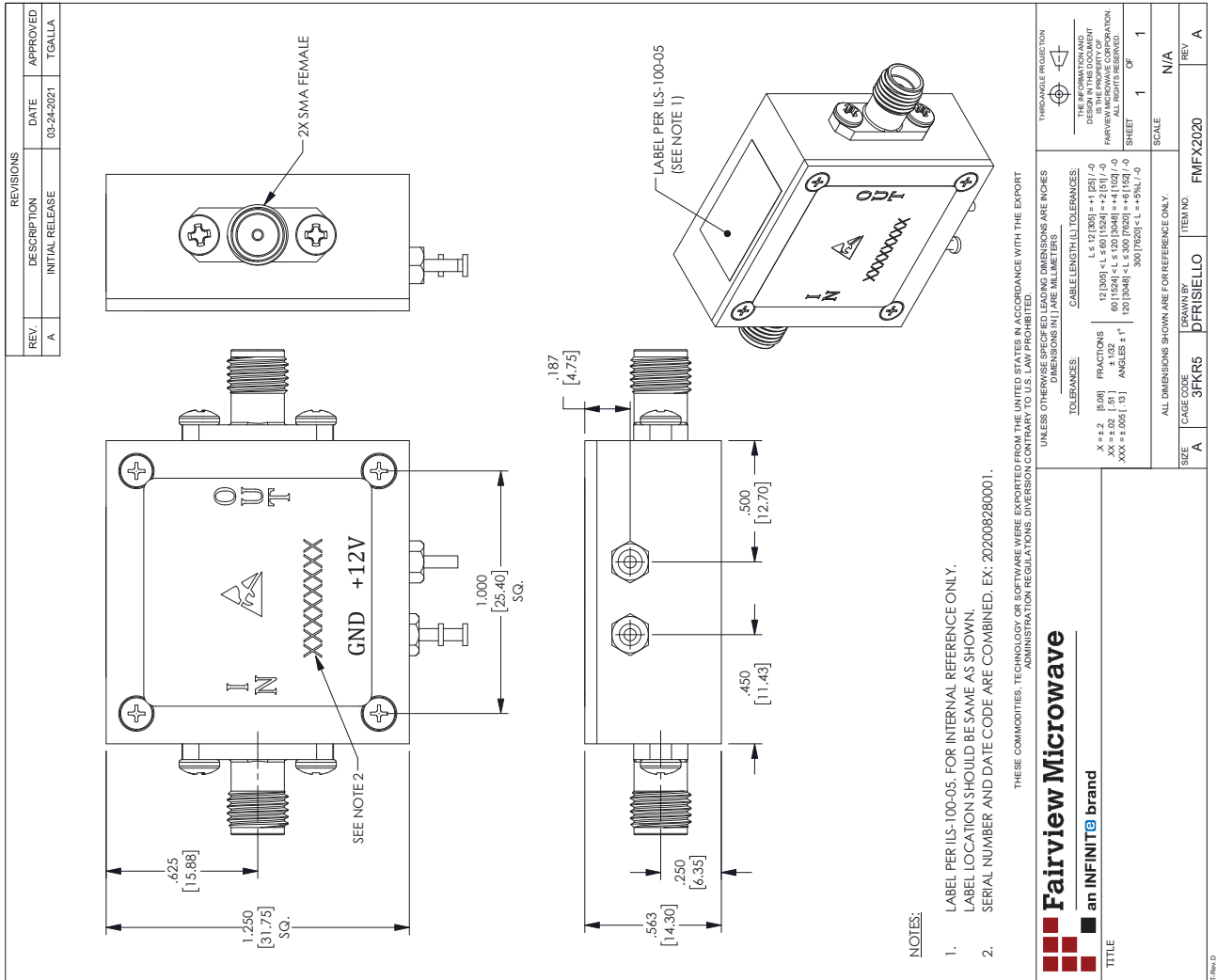


SMA Female Active 3x Frequency Multiplier with 2.85 GHz to 4.5 GHz Output from Fairview Microwave is in-stock and available to ship same-day. All of our RF/microwave products are available off-the-shelf from our ISO 9001:2008 certified facilities in Lewisville, Texas. Fairview Microwave is RF on-demand.

For additional information on this product, please click the following link: [SMA Female Active 3x Frequency Multiplier with 2.85 GHz to 4.5 GHz Output FMFX2020](#)

URL: <https://www.fairviewmicrowave.com/sma-active-3x-frequency-multiplier-4.5-ghz-fmfx2020-p.aspx>

The information contained in this document is accurate to the best of our knowledge and representative of the part described herein. It may be necessary to make modifications to the part and/or the documentation of the part, in order to implement improvements. Fairview Microwave reserves the right to make such changes as required. Unless otherwise stated, all specifications are nominal. Fairview Microwave does not make any representation or warranty regarding the suitability of the part described herein for any particular purpose, and Fairview Microwave does not assume any liability arising out of the use of any part or documentation.



SMA Female Active 3x Frequency Multiplier with 2.85 GHz to 4.5 GHz Output