

156 to 163 MHz, Omni Marine Antenna,
6.5 dBi, UHF Female (SO239) Connector, White,
Fiberglass Radome, Vertical Polarization

FMMAROM1004



Features

- Marine grade omni antenna
- Fiberglass strong material
- U-Bolt bracket
- SO239 Female connector
- 156 to 163 MHz, 6.5 dBi
- Yacht, boats and other marine vehicles
- Single pole long antenna
- IP67 rated antenna

Applications

- Port operations
- Boater calling
- Commercial and Non-commercial communications
- International distress, safety and calling (156.80 MHz)
- Coast guard communications
- Marine radios on boats, pontoon, sailboats or yacht
- AIS calling
- Marine operators
- Weather monitoring

Description

The Fairview FMMAROM1004 is a single band omni marine antenna that ships on the same day as ordered. Our vertical polarized antenna with 156 to 163 MHz frequency range has a UHF female connector. This antenna with a white radome made of fiberglass has an overall length of 92.99 inch, a width of 0.79 inch, and a weight of 1.32 lbs.

Fairview's FMMAROM1004 is a single band antenna operating from 156 to 163 MHz with 6.5 dBi gain. The omni directional antenna has a maximum input VSWR of 1.5:1.

Fairview has one of the largest in-stock collections of omni directional antennas with our wide selection of superior quality RF parts, that ship same day. Make your online purchase right now to take advantage of our same-day shipping. For further information on similar products, our expert technical support and knowledgeable sales team can help you get the ideal single band omni antenna as per your requirement.

Configuration

Design	Marine
Band Type	Single
Radiation Pattern	Omni Directional
Polarization	Vertical
Cable Type	S0239
Connector Type	UHF Female
Number of Ports	1

Electrical Specifications

Description	Minimum	Typical	Maximum	Units
Frequency Range	156		163	MHz
Input VSWR			1.5:1	
Impedance		50		Ohms
Gain		6.5		dBi
Horizontal (Azimuth) HPBW		360		Degrees
Input Power			50	Watts

Mechanical Specifications

Radome Material	Fiberglass
-----------------	------------

156 to 163 MHz, Omni Marine Antenna,
6.5 dBi, UHF Female (SO239) Connector, White,
Fiberglass Radome, Vertical Polarization

FMMAROM1004



Size

Length	92.99 in [236.19 cm]
Width	0.79 in [20.07 mm]
Height	0.79 in [20.07 mm]
Weight	1.32 lbs [598.74 g]

Environmental Specifications

Temperature

Operating Range -40 to +80 deg C

Compliance Certifications (see [product page](#) for current document)

Plotted and Other Data

Notes:

Typical Radiation Pattern

Appendix

Electrical Downtilt: Angle in the antenna's elevation pattern in which the maximum gain occurs.

Gain: Antenna's average gain.

Front to Back Ratio @ 180°±30°: Average difference between the antenna's maximum gain and the maximum gain in the antenna's back lobe over ±30° angles.

Cross-polarization Ratio (dB): Typical difference between the co-polarization and cross-polarization gain across the sector's 3 dB Beam Width.

Dedicated to serving the needs of the Wireless Internet Service Provider (WISP) market, KP Performance Antennas offers purpose built products that reliably perform in the field. KP Performance Antennas product line consists of Yagi, Grid, Omni, Dish and other style antennas that operate in the 900 MHz, 2.4 GHz, 3 GHz, and 5 GHz frequencies.

156 to 163 MHz, Omni Marine Antenna, 6.5 dBi, UHF Female (SO239) Connector, White, Fiberglass Radome, Vertical Polarization from Fairview Microwave is in-stock and available to ship same-day. All of our RF/microwave products are available off-the-shelf from our ISO 9001:2008 certified facilities in Lewisville, Texas. Fairview Microwave is RF on-demand.

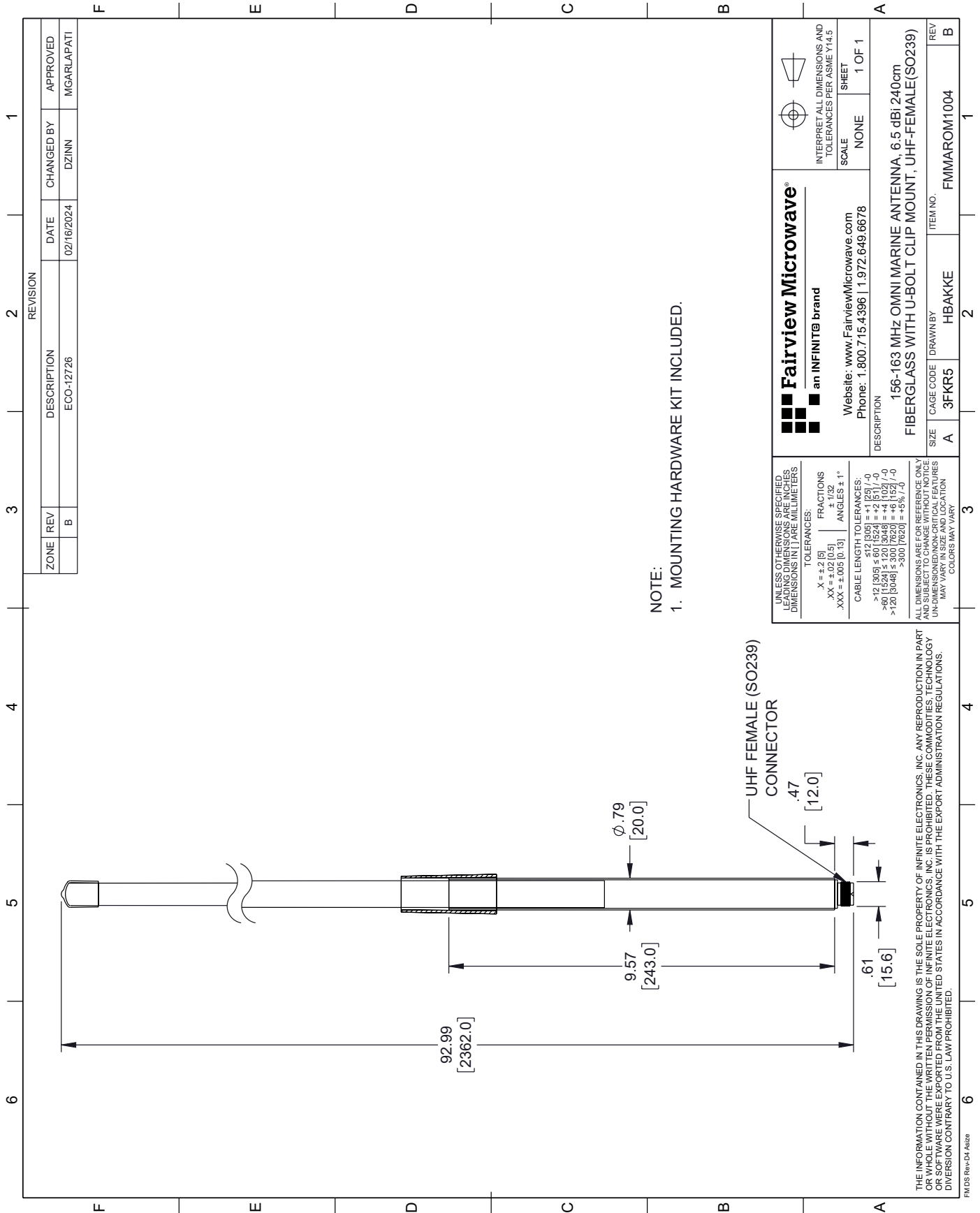
For additional information on this product, please click the following link: [156 to 163 MHz, Omni Marine Antenna, 6.5 dBi, UHF Female \(SO239\) Connector, White, Fiberglass Radome, Vertical Polarization FMMAROM1004](#)

URL: <https://www.fairviewmicrowave.com/6.5-dbi-antenna-156-163-mhz-uhf-connector-fmmarom1004-p.aspx>

The information contained within this document is accurate to the best of our knowledge and representative of the part described herein. It may be necessary to make modifications to the part and/or the documentation of the part in order to implement improvements. Fairview Microwave reserves the right to make such changes as required. Unless otherwise stated, all specifications are nominal. Fairview Microwave does not make any representation or warranty regarding the suitability of the part described herein for any particular purpose, and Fairview Microwave does not assume liability arising out of the use of any part or document.

FMMAROM1004 CAD Drawing

156 to 163 MHz, Omni Marine Antenna, 6.5 dBi, UHF Female (SO239)
Connector, White, Fiberglass Radome, Vertical Polarization



NOTE:
1. MOUNTING HARDWARE KIT INCLUDED.

ZONE		REVISION		APPROVED	
REV	DESCRIPTION	DATE	CHANGED BY	DATE	APPROVED
B	ECO-12726	02/16/2024	DZINN		MGARLAPATI

 an INFINIT [®] brand		 INTERPRET ALL DIMENSIONS AND TOLERANCES PER ASME Y14.5	
Website: www.FairviewMicrowave.com Phone: 1.800.715.4396 1.972.649.6678		SCALE	NONE
DESCRIPTION 156-163 MHz OMNI MARINE ANTENNA, 6.5 dBi 240cm FIBERGLASS WITH U-BOLT CLIP MOUNT, UHF-FEMALE(SO239)		SHEET	1 OF 1
SIZE	A	CAGE CODE	3FKR5
DRAWN BY	HBAKKE	ITEM NO.	FMMAROM1004
REV	B		

UNLESS OTHERWISE SPECIFIED LEADING DIMENSIONS ARE INCHES DIMENSIONS IN PAREMILLIMETERS

TOLERANCES:
 .X = ±.2 [5] FRACTIONS ± 1/32
 .XX = ±.02 [0.5] ANGLES ± 1°
 .XXX = ±.005 [0.13]

CABLE LENGTH TOLERANCES:
 >12 [305] ≤ 60 [1524] = +2 [51] / -0
 >60 [1524] ≤ 120 [3048] = +4 [102] / -0
 >120 [3048] ≤ 300 [7620] = +5 [127] / -0
 >300 [7620] = +5 [127] / -0

ALL DIMENSIONS ARE FOR REFERENCE ONLY UNLESS OTHERWISE SPECIFIED. DIMENSIONS ON CRITICAL FEATURES MAY VARY IN SIZE AND LOCATION. COLORS MAY VARY.

THE INFORMATION CONTAINED IN THIS DRAWING IS THE SOLE PROPERTY OF INFINITE ELECTRONICS, INC. ANY REPRODUCTION IN PART OR WHOLE WITHOUT THE WRITTEN PERMISSION OF INFINITE ELECTRONICS, INC. IS PROHIBITED. THESE COMMODITIES, TECHNOLOGY OR SOFTWARE WERE EXPORTED FROM THE UNITED STATES IN ACCORDANCE WITH THE EXPORT ADMINISTRATION REGULATIONS. DIVERSION CONTRARY TO U.S. LAW PROHIBITED.

FM DS Rev-D4 AS2P