

24.5 to 29.5 MHz, Omni Marine Antenna,
3 dBi, UHF Female (SO239) Connector, White,
Stainless Steel Radome, Vertical Polarization

FMMAROM1006



Features

- Marine grade omni antenna
- Stainless steel whip
- L bracket
- SO239 Female connector
- 24.5 to 29.5 MHz, 3 dBi
- Yacht, boats and other marine vehicles
- Single pole long antenna
- IP67 rated antenna

Applications

- Marine Radios
- Vessel communications
- Navigation Systems: RDF and LORAN-C.
- Weather monitoring
- Marine Beacons
- DSC emergency distress signals.

Description

The Fairview FMMAROM1006 is a single band omni marine antenna that ships on the same day as ordered. Our vertical polarized antenna with 24.5 to 29.5 MHz frequency range has a UHF female connector. This antenna with a white radome made of stainless steel has an overall length of 56.50 inch, a width of 1.2 inch, and a weight of 0.66 lbs.

Fairview's FMMAROM1006 is a single band antenna operating from 24.5 to 29.5 MHz with 3 dBi gain. The omni directional antenna has a maximum input VSWR of 1.5:1.

Fairview has one of the largest in-stock collections of omni directional antennas with our wide selection of superior quality RF parts, that ship same day. Make your online purchase right now to take advantage of our same-day shipping. For further information on similar products, our expert technical support and knowledgeable sales team can help you get the ideal single band omni antenna as per your requirement.

Configuration

Design	Marine
Band Type	Single
Radiation Pattern	Omni Directional
Polarization	Vertical
Cable Type	S0239
Connector Type	UHF Female
Number of Ports	1

Electrical Specifications

Description	Minimum	Typical	Maximum	Units
Frequency Range	24.5		29.5	MHz
Input VSWR			1.5:1	
Impedance		50		Ohms
Gain		3		dBi
Horizontal (Azimuth) HPBW		360		Degrees
Input Power			50	Watts

Mechanical Specifications

Radome Material	stainless steel
-----------------	-----------------

24.5 to 29.5 MHz, Omni Marine Antenna,
3 dBi, UHF Female (SO239) Connector, White,
Stainless Steel Radome, Vertical Polarization

FMMAROM1006



Size

Length	56.5 in [143.51 cm]
Width	1.2 in [30.48 mm]
Height	1.2 in [30.48 mm]
Weight	0.66 lbs [299.37 g]

Environmental Specifications

Temperature

Operating Range -40 to +80 deg C

Compliance Certifications (see [product page](#) for current document)

Plotted and Other Data

Notes:

Typical Radiation Pattern

Appendix

Electrical Downtilt: Angle in the antenna's elevation pattern in which the maximum gain occurs.

Gain: Antenna's average gain.

Front to Back Ratio @ 180°±30°: Average difference between the antenna's maximum gain and the maximum gain in the antenna's back lobe over ±30° angles.

Cross-polarization Ratio (dB): Typical difference between the co-polarization and cross-polarization gain across the sector's 3 dB Beam Width.

Dedicated to serving the needs of the Wireless Internet Service Provider (WISP) market, KP Performance Antennas offers purpose built products that reliably perform in the field. KP Performance Antennas product line consists of Yagi, Grid, Omni, Dish and other style antennas that operate in the 900 MHz, 2.4 GHz, 3 GHz, and 5 GHz frequencies.

24.5 to 29.5 MHz, Omni Marine Antenna, 3 dBi, UHF Female (SO239) Connector, White, Stainless Steel Radome, Vertical Polarization from Fairview Microwave is in-stock and available to ship same-day. All of our RF/microwave products are available off-the-shelf from our ISO 9001:2008 certified facilities in Lewisville, Texas. Fairview Microwave is RF on-demand.

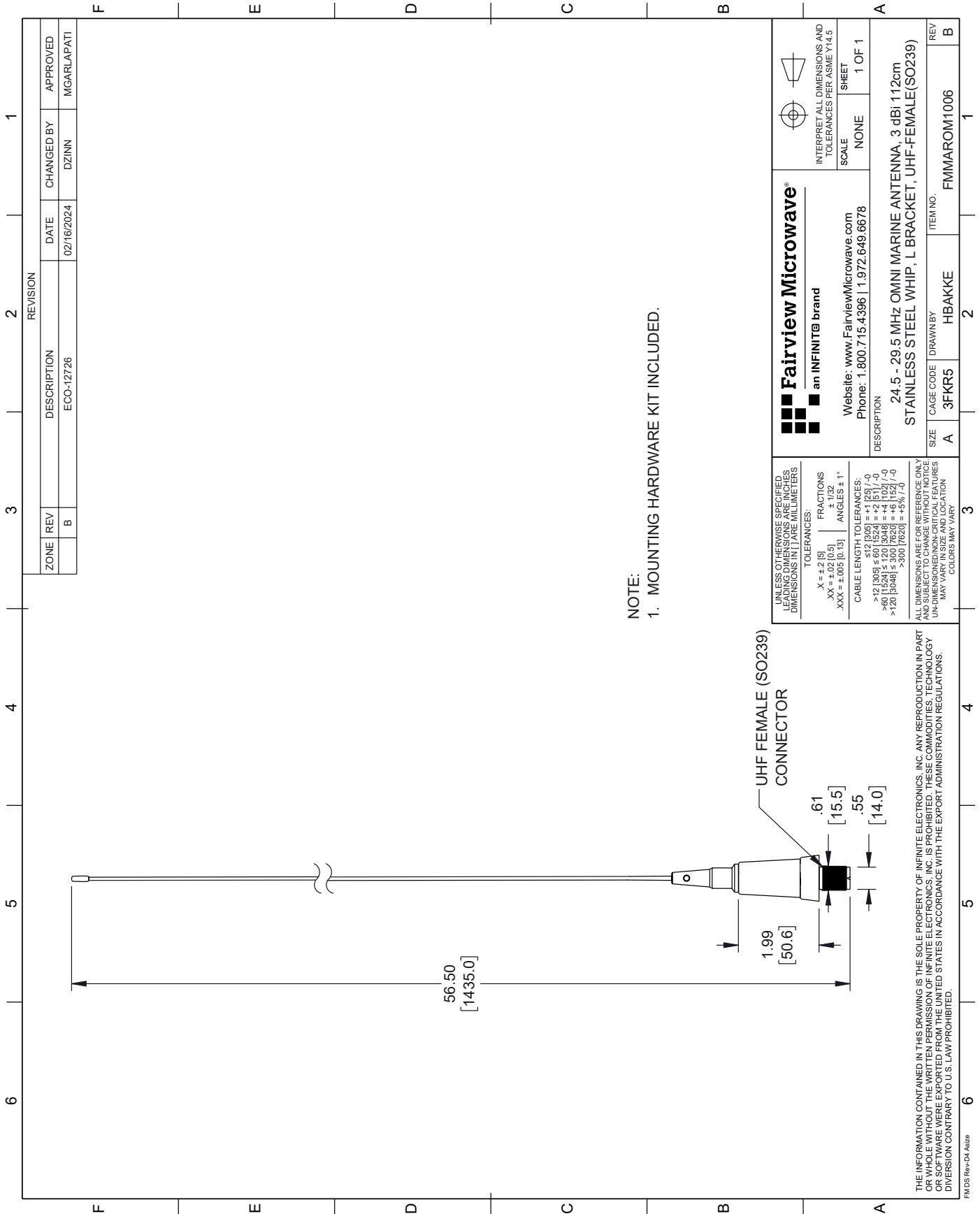
For additional information on this product, please click the following link: [24.5 to 29.5 MHz, Omni Marine Antenna, 3 dBi, UHF Female \(SO239\) Connector, White, Stainless Steel Radome, Vertical Polarization FMMAROM1006](#)

URL: <https://www.fairviewmicrowave.com/3-dbi-antenna-24.5-29.5-mhz-uhf-connector-fmmarom1006-p.aspx>

The information contained within this document is accurate to the best of our knowledge and representative of the part described herein. It may be necessary to make modifications to the part and/or the documentation of the part in order to implement improvements. Fairview Microwave reserves the right to make such changes as required. Unless otherwise stated, all specifications are nominal. Fairview Microwave does not make any representation or warranty regarding the suitability of the part described herein for any particular purpose, and Fairview Microwave does not assume liability arising out of the use of any part or document.

FMMAROM1006 CAD Drawing

24.5 to 29.5 MHz, Omni Marine Antenna, 3 dBi, UHF Female (SO239)
Connector, White, Stainless Steel Radome, Vertical Polarization



NOTE:
1. MOUNTING HARDWARE KIT INCLUDED.

ZONE		REVISION		APPROVED	
REV	DESCRIPTION	DATE	CHANGED BY		
B	ECO-12726	02/16/2024	DZINN	MGARLAPATI	

<p>Fairview Microwave an INFINIT[®] brand</p> <p>Website: www.FairviewMicrowave.com Phone: 1.800.715.4396 1.972.649.6678</p>		<p>INTERPRET ALL DIMENSIONS AND TOLERANCES PER ASME Y14.5</p> <p>SCALE: NONE SHEET: 1 OF 1</p>	
<p>UNLESS OTHERWISE SPECIFIED LEADING DIMENSIONS ARE INCHES DIMENSIONS IN PARE MILLIMETERS</p> <p>TOLERANCES: .X = ±.2 [5] FRACTIONS ± 1/32 .XX = ±.02 [0.5] ANGLES ± 1° .XXX = ±.005 [0.13]</p> <p>CABLE LENGTH TOLERANCES: >12 [305] ≤ 60 [1524] = +2 [51] / -0 >60 [1524] ≤ 120 [3048] = +4 [102] / -0 >120 [3048] ≤ 300 [7620] = +5 [127] / -0 >300 [7620] = +5 [127] / -0</p>		<p>ALL DIMENSIONS ARE FOR REFERENCE ONLY UNLESS OTHERWISE SPECIFIED. UNDIMENSIONED CRITICAL FEATURES MAY VARY IN SIZE AND LOCATION. COLORS MAY VARY.</p>	
DESCRIPTION	24.5 - 29.5 MHZ OMNI MARINE ANTENNA, 3 dBi 112cm STAINLESS STEEL WHIP, L BRACKET, UHF-FEMALE(SO239)	ITEM NO.	FMMAROM1006
SIZE	A 3FKR5	DRAWN BY	HBAKKE
REV	B		

THE INFORMATION CONTAINED IN THIS DRAWING IS THE SOLE PROPERTY OF INFINITE ELECTRONICS, INC. ANY REPRODUCTION IN PART OR WHOLE WITHOUT THE WRITTEN PERMISSION OF INFINITE ELECTRONICS, INC. IS PROHIBITED. THESE COMMODITIES, TECHNOLOGY OR SOFTWARE WERE EXPORTED FROM THE UNITED STATES IN ACCORDANCE WITH THE EXPORT ADMINISTRATION REGULATIONS. DIVERSION CONTRARY TO U.S. LAW PROHIBITED.

FM DS Rev-D4 AS2P