

SPDT, IP64 Rated Electromechanical Relay Failsafe Switch, DC to 18 GHz, 600W, TTL, Diodes, 28VDC, SMA



FMSW6523

Features

- Single Pole Double Throw (SP2T) Ruggedized Electromechanical Relay Switch
- IP64 Level 1 Rated
- DC to 18 GHz Frequency Range
- Failsafe Actuator
- TTL Logic
- Suppression Diodes
- 2M Lifecycle Rating
- Insertion Loss 0.2 dB typ
- Isolation > 85 dB typ
- VSWR as low as 1.2:1 max
- 9 Pin D-Sub Connector for DC and Command Control
- +28 Volt DC Bias
- SMA Female Connectors
- -54°C to +85°C Operating Temperature
- Up to 90 Watt Average Power Handling
- 50 Ohm Design
- Hot Switching Capability - Consult Factory
- S-Parameter Data available upon request
- Rugged Design meets Mil-STD-202 Test Conditions

Applications

- Aerospace & Defense
- Test & Measurement
- Microwave Radio Systems
- Military & Commercial Communication Systems
- Research & Development
- SATCOM
- Wireless Communications
- Enterprise
- IoT

Description

The FMSW6523 is a Ruggedized Single Pole Double Throw (SP2T) electromechanical relay switch that operates across a frequency range from DC to 18 GHz and can handle up to 600 Watts of average power in a break before make condition. The 50 Ohm design is IP64 compliant with a Level 1 moisture seal and specifically designed to operate reliably in harsh usage environments and conditions, such as over extreme temperatures and wet or dusty environments. Intrusion protection offers full protection against dust and other particulates. Moisture protection enables resistance to splashes in all directions. The switch has a Failsafe actuator and is rated for 2 million lifecycles. Additional features include TTL control logic, and suppression diodes which limit voltage spikes or reverse current. Impressive typical performance includes 0.2 dB insertion loss and isolation greater than 85 dB. The switch requires + 28 Vdc bias voltage and operates over a wide temperature range of -54°C to +85°C. The rugged and compact package assembly supports female SMA connectors and 9 Pin D-Sub connector for DC and Command Control functions. And for highly reliable operation, the model is guaranteed to meet MIL-STD-202 environmental test conditions for shock and random vibration.

Electrical Specifications (TA = +25°C, DC Voltage = 28 Vdc)

Switch Type	SPDT
Actuator Type	Failsafe
Actuator Options	Diodes, TTL Logic
TTL Control	on: 2.4 to 5.5 Volts
	off: to 0.8 Volts
	at 5.5 Volts
	at 0.8 Volts
TTL Control Current	

Description	Min	Typ	Max	Units
Frequency Range	DC		18	GHz
Impedance		50		Ohms
Operating Voltage	26	28	30	Volts
Actuating Current @ 28 Volts			90	mA

SPDT, IP64 Rated Electromechanical Relay Failsafe Switch, DC to 18 GHz, 600W, TTL, Diodes, 28VDC, SMA



FMSW6523

Description	Min	Typ	Max	Units
VSWR		1.1:1	1.4:1	
Insertion Loss		0.2	0.4	
Isolation	65	90		dB
Switching Time		20		ms

Performance by Frequency

Description	F1	F2	F3	F4	F5	Units
Frequency Range	DC - 6	6 - 12	12 - 18			GHz
VSWR, Max	1.2:1	1.3:1	1.4:1			
Insertion Loss, Max	0.15	0.25	0.4			dB
Isolation, Min	85	70	65			dB

Mechanical Specifications

Size

Length	2.05 in [52.07 mm]
Width/Diameter	1.5 in [38.1 mm]
Height	0.52 in [13.21 mm]
Weight	0.062 lbs [28.12 g]

Connectors

RF Connector Type	SMA Female
Control Connector	D-Subminiature

Environmental Specifications

Temperature

Operating Range	-54 to +85 deg C
Storage Range	-55 to +100 deg C
Ingress Protection (IP) Rating	IP64
Shock	MIL-STD-202 Method 213, Condition D, 500 G (non oper)
Vibration	MIL-STD-202 Method 204, Condition D, 10G RMS (non oper)

Compliance Certifications (see [product page](#) for current document)

Plotted and Other Data

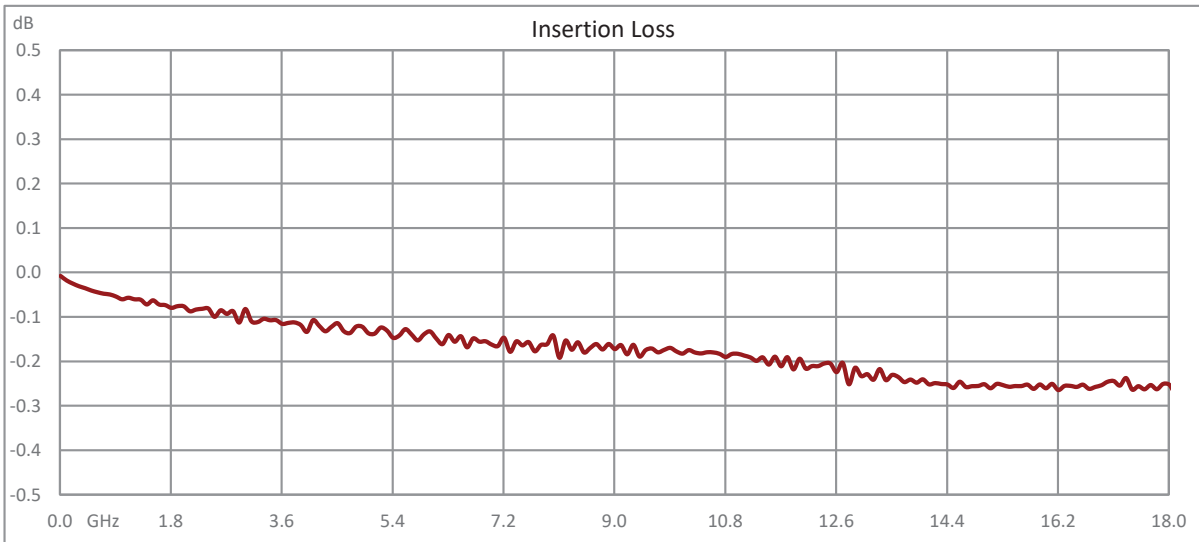
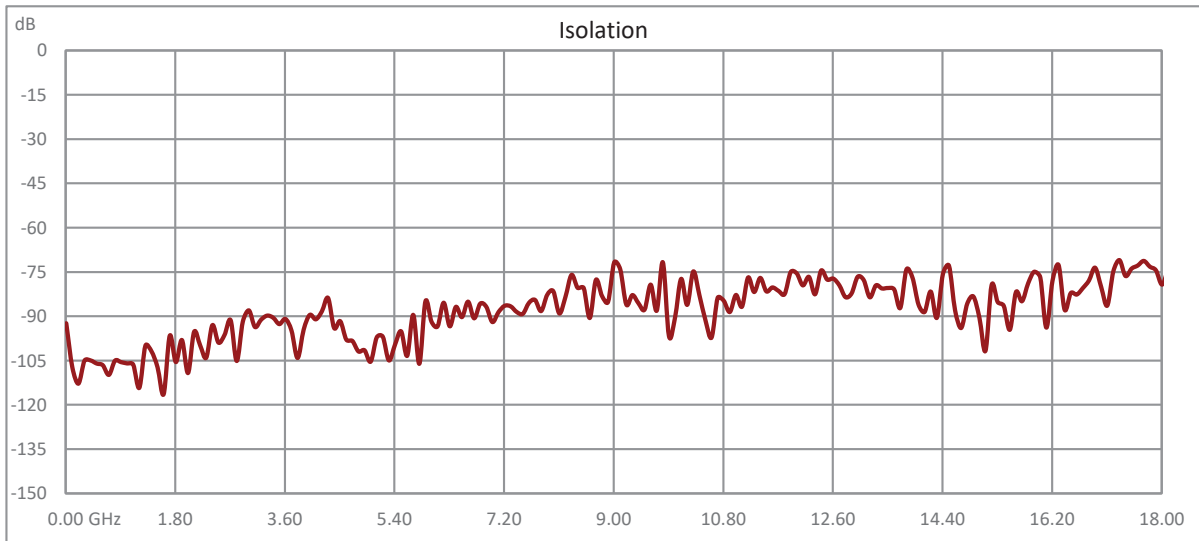
Notes:

SPDT, IP64 Rated Electromechanical Relay Failsafe Switch, DC to 18 GHz, 600W, TTL, Diodes, 28VDC, SMA



FMSW6523

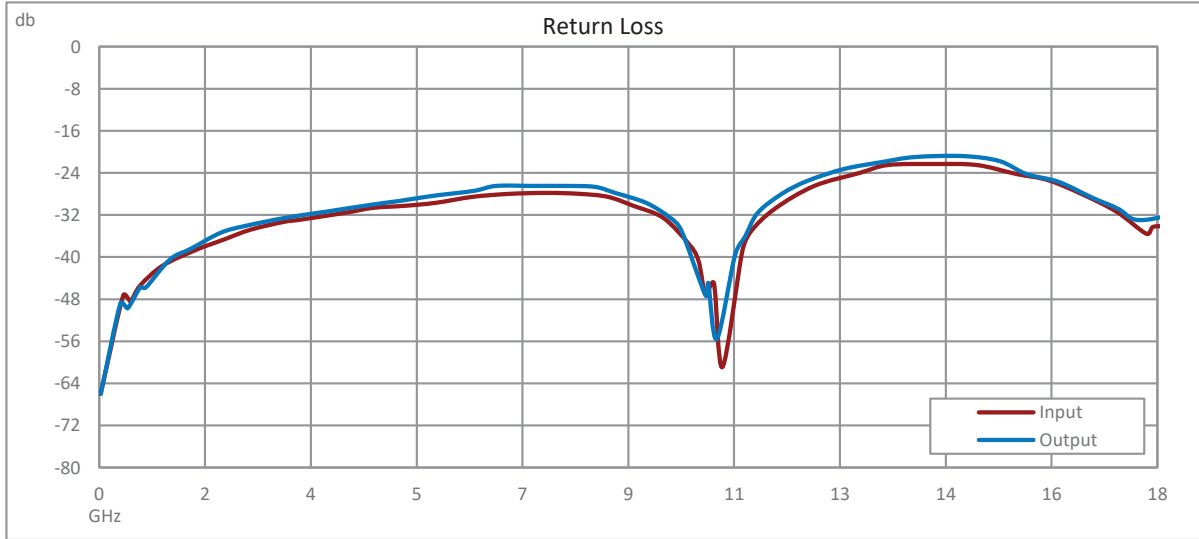
Typical Performance Data



SPDT, IP64 Rated Electromechanical Relay Failsafe Switch, DC to 18 GHz, 600W, TTL, Diodes, 28VDC, SMA



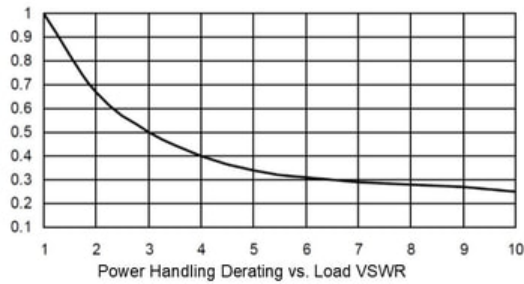
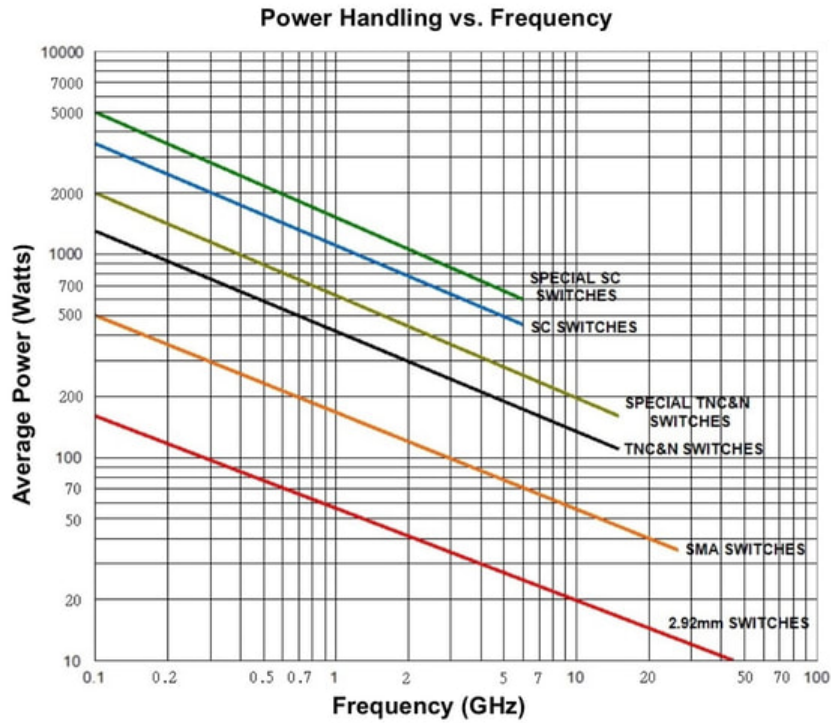
FMSW6523



SPDT, IP64 Rated Electromechanical Relay Failsafe Switch, DC to 18 GHz, 600W, TTL, Diodes, 28VDC, SMA



FMSW6523



Power handling chart and derating curves based on the following conditions:

- Ambient temperature: 40°C or less
- Altitude: Sea level
- Load VSWR: 1.20:1 Maximum
- Relative Humidity: 40-50%
- Cold switching: RF signal off

Note: specifications subject to change without notice

SPDT, IP64 Rated Electromechanical Relay Failsafe Switch, DC to 18 GHz, 600W, TTL, Diodes, 28VDC, SMA



FMSW6523

SPDT, IP64 Rated Electromechanical Relay Failsafe Switch, DC to 18 GHz, 600W, TTL, Diodes, 28VDC, SMA from Fairview Microwave is in-stock and available to ship same-day. All of our RF/microwave products are available off-the-shelf from our ISO 9001:2008 certified facilities in Lewisville, Texas. Fairview Microwave is RF on-demand.

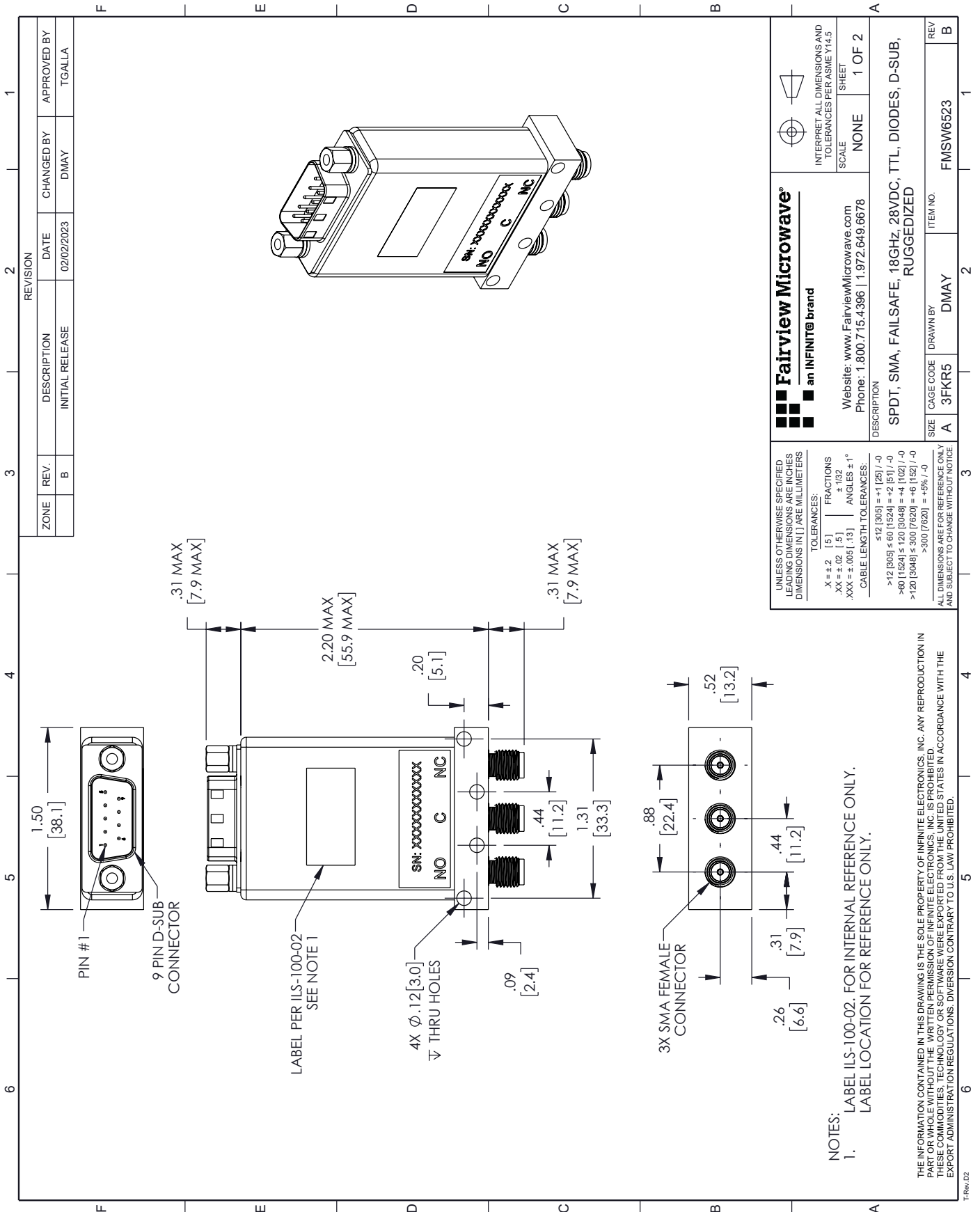
For additional information on this product, please click the following link: [SPDT, IP64 Rated Electromechanical Relay Failsafe Switch, DC to 18 GHz, 600W, TTL, Diodes, 28VDC, SMA FMSW6523](#)

URL: <https://www.fairviewmicrowave.com/spdt-failsafe-18-ghz-electro-mechanical-relay-switch-diodes-ttl-sma-fmsw6523-p.aspx>

The information contained within this document is accurate to the best of our knowledge and representative of the part described herein. It may be necessary to make modifications to the part and/or the documentation of the part in order to implement improvements. Fairview Microwave reserves the right to make such changes as required. Unless otherwise stated, all specifications are nominal. Fairview Microwave does not make any representation or warranty regarding the suitability of the part described herein for any particular purpose, and Fairview Microwave does not assume liability arising out of the use of any part or document.

FMSW6523 CAD Drawing

SPDT, IP64 Rated Electromechanical Relay Failsafe Switch, DC to 18 GHz, 600W, TTL, Diodes, 28VDC, SMA



REVISION		DATE	CHANGED BY	APPROVED BY
ZONE	REV.	DESCRIPTION	INITIAL RELEASE	
	B			TGALLA

Fairview Microwave
an INFINITI® brand

Website: www.FairviewMicrowave.com
Phone: 1.800.715.4396 | 1.972.649.6678

SCALE: NONE
SHEET: 1 OF 2

INTERPRET ALL DIMENSIONS AND TOLERANCES PER ASME Y14.5

DESCRIPTION: SPDT, SMA, FAILSAFE, 18GHZ, 28VDC, TTL, DIODES, D-SUB, RUGGEDIZED

SIZE: A
CAGE CODE: 3FKR5
DRAWN BY: DMAY

ITEM NO: FMSW6523

REV: B

UNLESS OTHERWISE SPECIFIED, ALL DIMENSIONS ARE IN INCHES. DIMENSIONS IN [] ARE MILLIMETERS.

TOLERANCES:
X = ±.2 (5)
.XX = ±.02 (.5)
.XXX = ±.005 (.13)
ANGLES ± 1°

FRACTIONS: ± 1/32
CABLE LENGTH TOLERANCES:
≤ 12 [305] = ±.1 [25] / -0
> 12 [305] ≤ 60 [1524] = ±.2 [51] / -0
> 60 [1524] ≤ 120 [3048] = ±.4 [102] / -0
> 120 [3048] ≤ 300 [7620] = ±.8 [152] / -0
> 300 [7620] = ±.9% / -0

ALL DIMENSIONS ARE FOR REFERENCE ONLY AND SUBJECT TO CHANGE WITHOUT NOTICE.

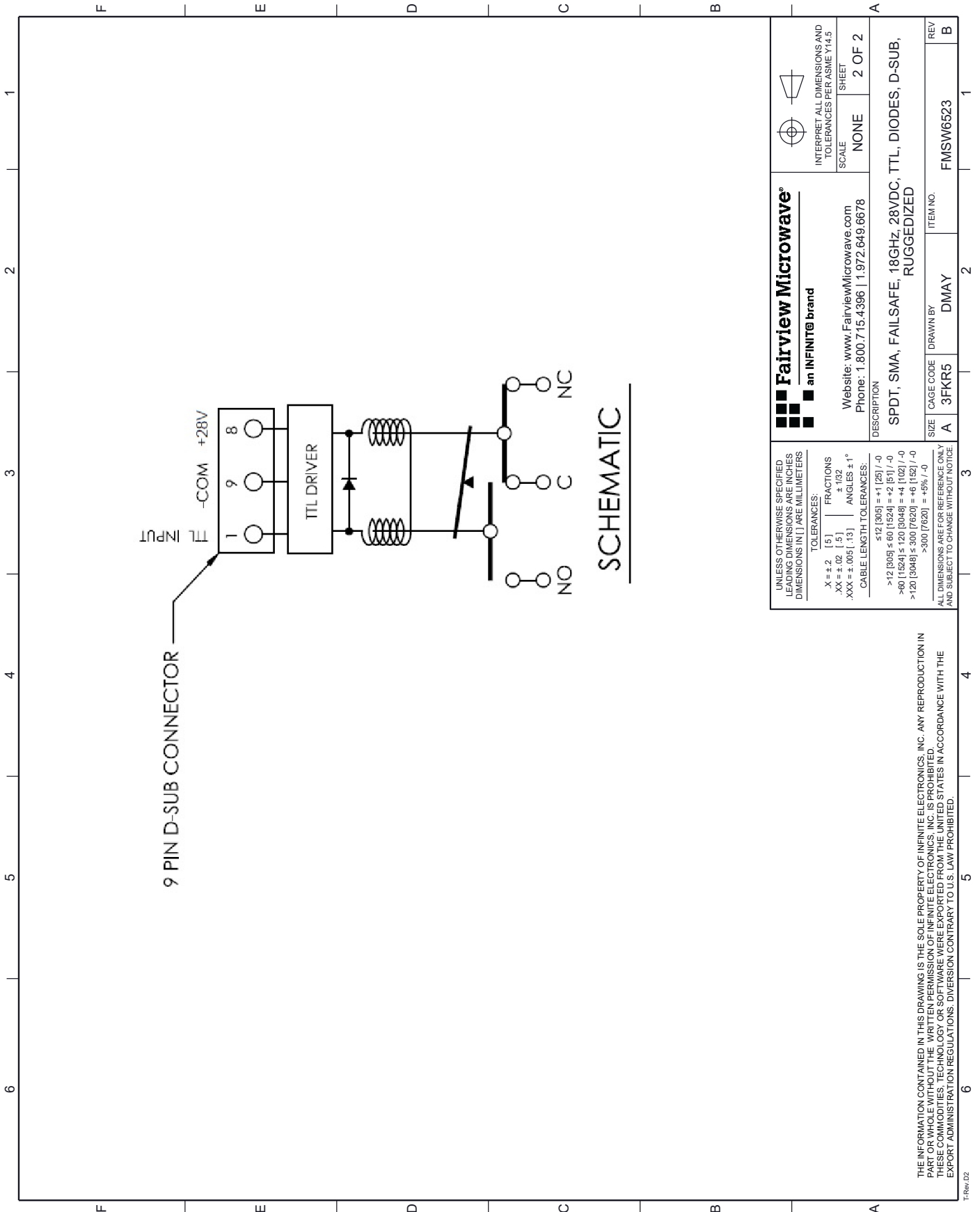
NOTES:
1. LABEL ILS-100-02, FOR INTERNAL REFERENCE ONLY. LABEL LOCATION FOR REFERENCE ONLY.

THE INFORMATION CONTAINED IN THIS DRAWING IS THE SOLE PROPERTY OF INFINITE ELECTRONICS, INC. ANY REPRODUCTION IN PART OR WHOLE WITHOUT THE WRITTEN PERMISSION OF INFINITE ELECTRONICS, INC. IS PROHIBITED. THESE COMMODITIES, TECHNOLOGY OR SOFTWARE WERE EXPORTED FROM THE UNITED STATES IN ACCORDANCE WITH THE EXPORT ADMINISTRATION REGULATIONS. DIVERSION CONTRARY TO U.S. LAW PROHIBITED.

TRev.02

FMSW6523 CAD Drawing

SPDT, IP64 Rated Electromechanical Relay Failsafe Switch, DC to 18 GHz, 600W, TTL, Diodes, 28VDC, SMA



<p>Fairview Microwave an INFINITI® brand</p> <p>Website: www.FairviewMicrowave.com Phone: 1.800.715.4396 1.972.649.6678</p>		<p>INTERPRET ALL DIMENSIONS AND TOLERANCES PER ASME Y14.5</p> <p>SCALE: NONE</p> <p>SHEET: 2 OF 2</p>	
<p>UNLESS OTHERWISE SPECIFIED, ALL DIMENSIONS ARE IN INCHES. DIMENSIONS IN [] ARE IN MILLIMETERS.</p> <p>TOLERANCES:</p> <p>X = ±.2 [.5] FRACTIONS ±.132</p> <p>.XX = ±.02 [.5] ANGLES ± 1°</p> <p>.XXX = ±.005 [.13]</p> <p>CABLE LENGTH TOLERANCES:</p> <p>≤ 12 [305] = ±.1 [25] / -0</p> <p>> 12 [305] ≤ 60 [1524] = ±.2 [.01] / -0</p> <p>> 60 [1524] ≤ 120 [3048] = ±.4 [.02] / -0</p> <p>> 120 [3048] ≤ 300 [7620] = ±.8 [.02] / -0</p> <p>> 300 [7620] = ±.9% / -0</p> <p>ALL DIMENSIONS ARE FOR REFERENCE ONLY AND SUBJECT TO CHANGE WITHOUT NOTICE.</p>			
<p>DESCRIPTION</p> <p>SPDT, SMA, FAILSAFE, 18GHz, 28VDC, TTL, DIODES, D-SUB, RUGGEDIZED</p>		<p>ITEM NO.</p> <p>FMSW6523</p>	
<p>SIZE</p> <p>A</p>	<p>CAGE CODE</p> <p>3FKR5</p>	<p>DRAWN BY</p> <p>DMAY</p>	<p>REV</p> <p>B</p>

THE INFORMATION CONTAINED IN THIS DRAWING IS THE SOLE PROPERTY OF INFINITE ELECTRONICS, INC. ANY REPRODUCTION IN PART OR WHOLE WITHOUT THE WRITTEN PERMISSION OF INFINITE ELECTRONICS, INC. IS PROHIBITED. THESE COMMODITIES, TECHNOLOGY OR SOFTWARE WERE EXPORTED FROM THE UNITED STATES IN ACCORDANCE WITH THE EXPORT ADMINISTRATION REGULATIONS. DIVERSION CONTRARY TO U.S. LAW PROHIBITED.

TRev_02