

SPDT, IP64 Rated Electromechanical Relay Failsafe Switch, DC to 26.5 GHz, 90W, 12VDC, SMA

The FMSW6538 is a Ruggedized Single Pole Double Throw (SP2T) electromechanical relay switch that operates across a frequency range from DC to 26.5 GHz and can handle up to 90 Watts of average power in a break before make condition. The 50 Ohm design is IP64 compliant with a Level 1 moisture seal and specially designed to operate reliably in harsh usage environments and conditions, such as over extreme temperatures and wet or dusty environments. Intrusion protection offers full protection against dust and other particulates. Moisture protection enables resistance to splashes in all directions. The switch has a Failsafe actuator and is rated for 2 million lifecycles. Impressive typical performance includes 0.3 dB insertion loss and isolation greater than 90 dB. The switch requires +12 Vdc bias voltage and operates over a wide temperature range of -54°C to +85°C. The rugged and compact package assembly supports SMA female connectors and solder terminal pins for DC control. And for highly reliable operation, the model is guaranteed to meet MIL-STD-202 environmental test conditions for shock and random vibration.

Electrical Specifications (TA = +25°C, DC Voltage = 12 Vdc)

Switch Type SPDT
 Actuator Type Failsafe

Description	Min	Typ	Max	Units
Frequency Range	DC		26.5	GHz
Impedance		50		Ohms
Operating Voltage	11	12	13	Volts
Actuating Current @ 12 Volts			200	mA
VSWR		1.2:1	1.7:1	
Insertion Loss		0.3	0.6	dB
Isolation	50	80		dB
Switching Time		20		ms

Performance by Frequency

Description	F1	F2	F3	F4	F5	Units
Frequency Range	DC - 6	6 - 12	12 - 18	18 - 26.5		GHz
VSWR, Max	1.2:1	1.3:1	1.4:1	1.7:1		
Insertion Loss, Max	0.2	0.4	0.5	0.6		dB
Isolation, Min	70	60	60	50		dB

Mechanical Specifications

Size	
Length	2.05 in [52.07 mm]
Width/Diameter	1.5 in [38.1 mm]
Height	0.52 in [13.21 mm]
Weight	0.048 lbs [21.77 g]



Features:

- Single Pole Double Throw (SP2T) Ruggedized Electromechanical Relay Switch
- IP64 Level 1 Rated
- DC to 26.5 GHz Frequency Range
- Failsafe Actuator
- 2M Lifecycle Rating
- Insertion Loss 0.3 dB typ
- Isolation > 70 dB typ
- VSWR as low as 1.2:1 max
- Solder Terminal Pins for DC Control
- +12 Volt DC Bias
- SMA Female Connectors
- -54°C to +85°C Operating Temperature
- Up to 90 Watt Average Power Handling
- 50 Ohm Design
- Hot Switching Capability - Consult Factory
- S-Parameter Data available upon request
- Rugged Design meets Mil-STD-202 Test Conditions

Applications:

- Aerospace & Defense
- Test & Measurement
- Microwave Radio Systems
- Military & Commercial Communication Systems
- Research & Development
- SATCOM
- Wireless Communications
- Enterprise
- IoT

Fairview Microwave
 301 Leora Ln., Suite 100
 Lewisville, TX 75056
 Tel: 1-800-715-4396 / (972) 649-6678
 Fax: (972) 649-6689
www.fairviewmicrowave.com
sales@fairviewmicrowave.com

Connectors

RF Connector Type
Control Connector

SMA Female
Solder Terminals

Environmental Specifications

Temperature

Operating Range
Storage Range

-54 to +85 deg C
-55 to +100 deg C

Ingress Protection (IP) Rating

IP64

Shock

MIL-STD-202 Method 213, Condition D, 500 G (non oper)

Vibration

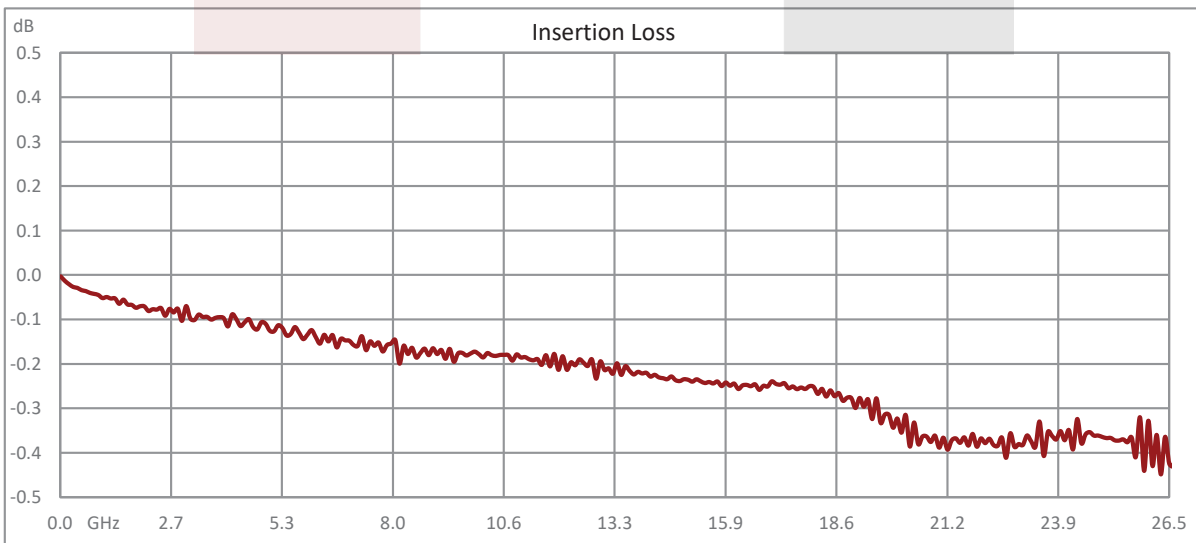
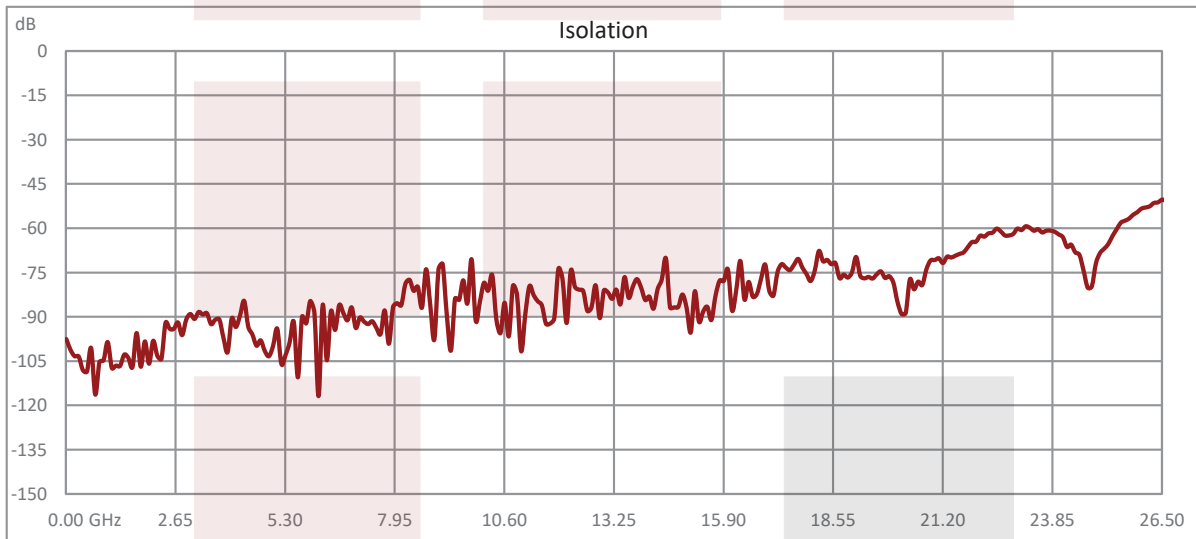
MIL-STD-202 Method 204, Condition D, 10G RMS (non oper)

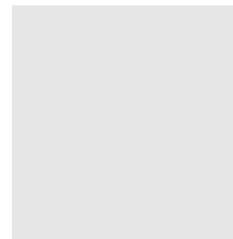
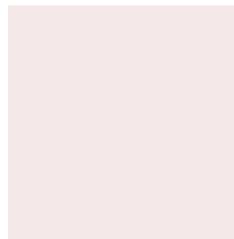
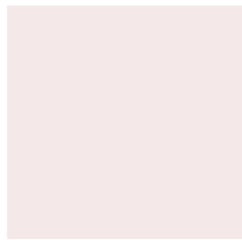
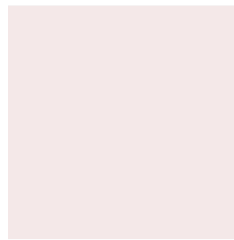
Compliance Certifications (see [product page](#) for current document)

Plotted and Other Data

Notes:

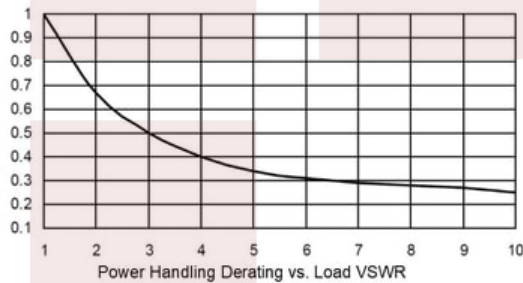
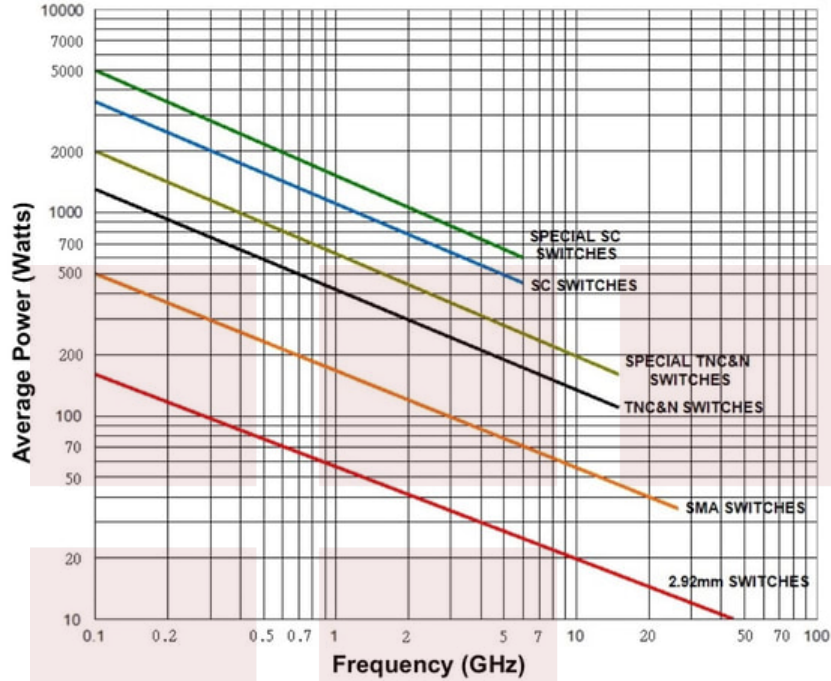
Typical Performance Data





Power Handling vs. Frequency

Power Handling vs. Frequency



Power handling chart and derating curves based on the following conditions:

- Ambient temperature: 40°C or less
- Altitude: Sea level
- Load VSWR: 1.20:1 Maximum
- Relative Humidity: 40-50%
- Cold switching: RF signal off

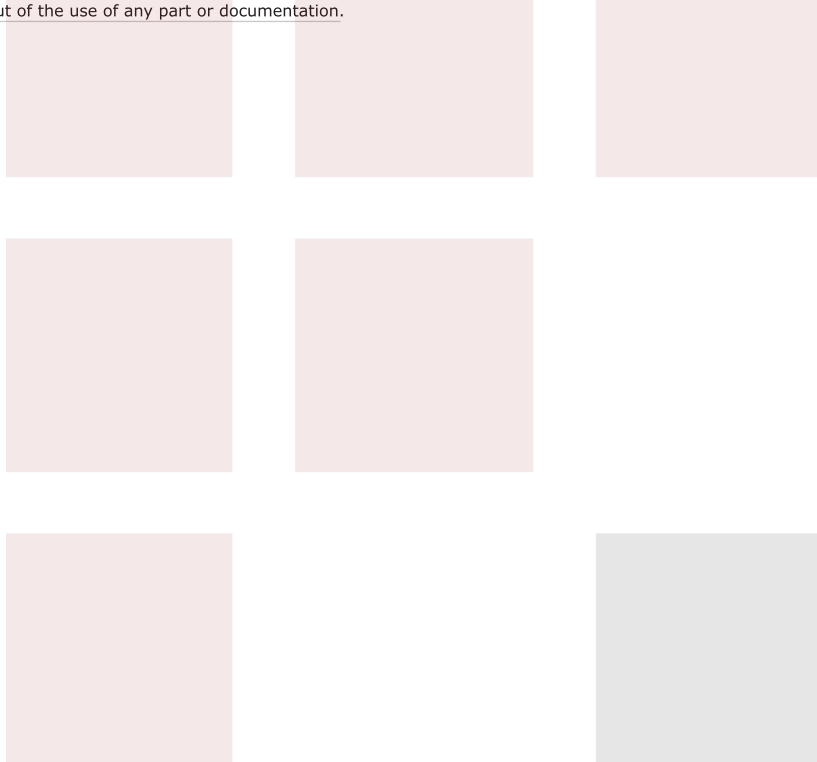
Note: specifications subject to change without notice

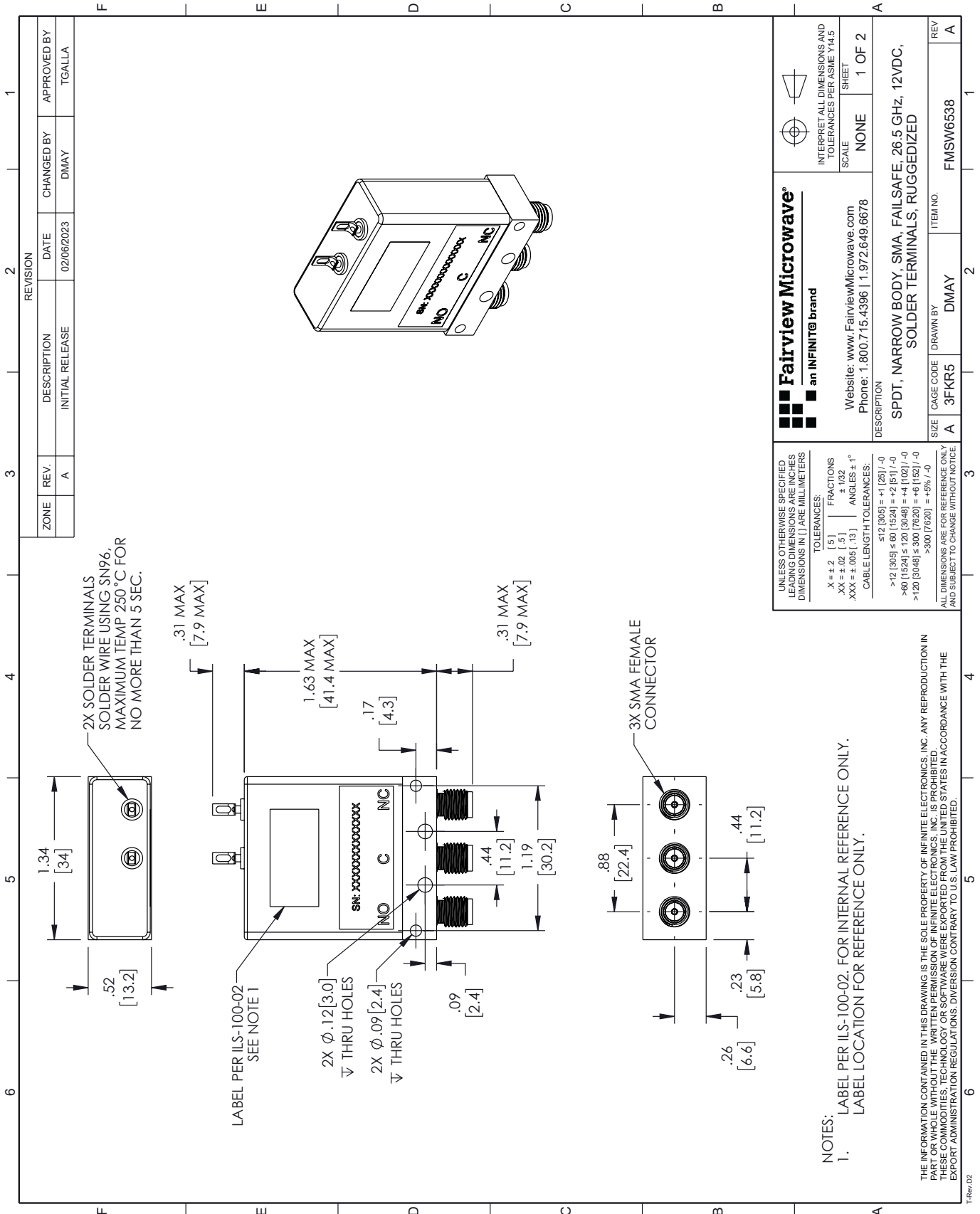
SPDT, IP64 Rated Electromechanical Relay Failsafe Switch, DC to 26.5 GHz, 90W, 12VDC, SMA from Fairview Microwave is in-stock and available to ship same-day. All of our RF/microwave products are available off-the-shelf from our ISO 9001:2008 certified facilities in Lewisville, Texas. Fairview Microwave is RF on-demand.

For additional information on this product, please click the following link: [SPDT, IP64 Rated Electromechanical Relay Failsafe Switch, DC to 26.5 GHz, 90W, 12VDC, SMA FMSW6538](#)

URL: <https://www.fairviewmicrowave.com/spdt-failsafe-26.5-ghz-electro-mechanical-relay-switch-sma-fmsw6538-p.aspx>

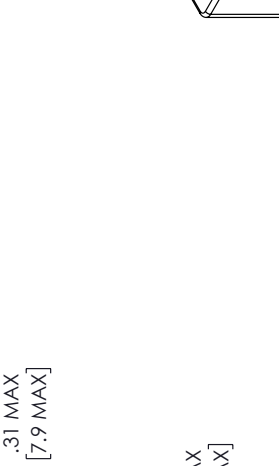
The information contained in this document is accurate to the best of our knowledge and representative of the part described herein. It may be necessary to make modifications to the part and/or the documentation of the part, in order to implement improvements. Fairview Microwave reserves the right to make such changes as required. Unless otherwise stated, all specifications are nominal. Fairview Microwave does not make any representation or warranty regarding the suitability of the part described herein for any particular purpose, and Fairview Microwave does not assume any liability arising out of the use of any part or documentation.





ZONE	REV.	DESCRIPTION	DATE	CHANGED BY	APPROVED BY
A	A	INITIAL RELEASE	02/06/2023	DMAY	TGALLA

REVISION	DESCRIPTION	DATE	CHANGED BY	APPROVED BY
2	INITIAL RELEASE	02/06/2023	DMAY	TGALLA



UNLESS OTHERWISE SPECIFIED
LEADING DIMENSIONS ARE INCHES
DIMENSIONS IN [] ARE MILLIMETERS

TOLERANCES:

.X = ±.2 [5] FRACTIONS
.XX = ±.02 [.5] ± 1/32
.XXX = ±.005 [.13] ANGLES ± 1°

CABLE LENGTH TOLERANCES:

≤ 12 [305] = ±1 [25] / -0
>12 [305] ≤ 60 [1524] = +2 [51] / -0
>60 [1524] ≤ 120 [3048] = +4 [102] / -0
>120 [3048] ≤ 300 [7620] = +6 [152] / -0
>300 [7620] = +5% / -0

ALL DIMENSIONS ARE FOR REFERENCE ONLY
AND SUBJECT TO CHANGE WITHOUT NOTICE

Fairview Microwave[®]
an INFINIT[®] brand

Website: www.FairviewMicrowave.com
Phone: 1.800.715.4396 | 1.972.649.6678

INTERPRET ALL DIMENSIONS AND
TOLERANCES PER ASME Y14.5
SCALE NONE SHEET 1 OF 2

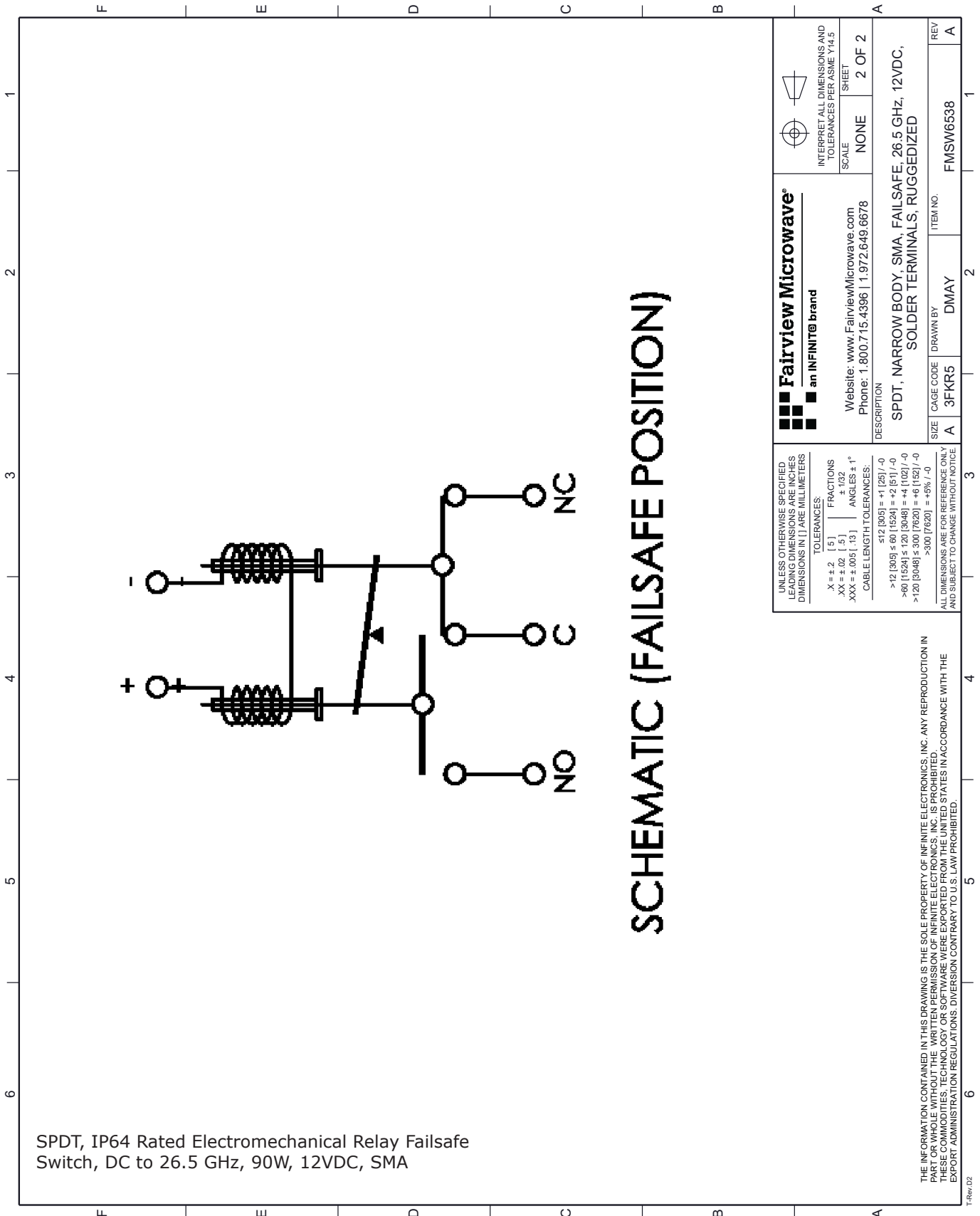
DESCRIPTION
SPDT, NARROW BODY, SMA, FAILSAFE, 26.5 GHz, 12VDC,
SOLDER TERMINALS, RUGGEDIZED

SIZE A CAGE CODE A 3FKR5 DRAWN BY DMAY ITEM NO. FMSW6538 REV A

- NOTES:
- LABEL PER ILS-100-02. FOR INTERNAL REFERENCE ONLY.
LABEL LOCATION FOR REFERENCE ONLY.

THE INFORMATION CONTAINED IN THIS DRAWING IS THE SOLE PROPERTY OF INFINITE ELECTRONICS, INC. ANY REPRODUCTION IN PART OR WHOLE WITHOUT THE WRITTEN PERMISSION OF INFINITE ELECTRONICS, INC. IS PROHIBITED. THESE COMMODITIES, TECHNOLOGY OR SOFTWARE WERE EXPORTED FROM THE UNITED STATES IN ACCORDANCE WITH THE EXPORT ADMINISTRATION REGULATIONS. DIVISION CONTRARY TO U.S. LAW PROHIBITED.

T-Rev D2



SPDT, IP64 Rated Electromechanical Relay Failsafe Switch, DC to 26.5 GHz, 90W, 12VDC, SMA

<p>Fairview Microwave an INFINIT[®] brand</p> <p>Website: www.FairviewMicrowave.com Phone: 1.800.715.4396 1.972.649.6678</p>	<p>INTERPRET ALL DIMENSIONS AND TOLERANCES PER ASME Y14.5</p>
	<p>SCALE: NONE</p> <p>SHEET: 2 OF 2</p>
<p>DESCRIPTION:</p> <p>SPDT, NARROW BODY, SMA, FAILSAFE, 26.5 GHz, 12VDC, SOLDER TERMINALS, RUGGEDIZED</p>	
<p>UNLESS OTHERWISE SPECIFIED, LEADING DIMENSIONS ARE INCHES AND DIMENSIONS IN [] ARE MILLIMETERS</p> <p>TOLERANCES:</p> <p>.X = ±.2 [.5] FRACTIONS .XX = ±.02 [.5] ±.132 .XXX = ±.005 [.13] ANGLES ± 1°</p> <p>CABLE LENGTH TOLERANCES:</p> <p>≤12 [305] ≤ 60 [1524] = +1 [25] / -0 >60 [1524] ≤ 120 [3048] = +4 [102] / -0 >120 [3048] ≤ 300 [7620] = +6 [152] / -0 >300 [7620] = +5% / -0</p> <p>ALL DIMENSIONS ARE FOR REFERENCE ONLY AND SUBJECT TO CHANGE WITHOUT NOTICE</p>	<p>ITEM NO. FMSW6538</p> <p>REV A</p>
<p>SIZE A</p> <p>CAGE CODE 3FKR5</p> <p>DRAWN BY DMAY</p>	<p>DESCRIPTION</p>

THE INFORMATION CONTAINED IN THIS DRAWING IS THE SOLE PROPERTY OF INFINITE ELECTRONICS, INC. ANY REPRODUCTION IN PART OR WHOLE WITHOUT THE WRITTEN PERMISSION OF INFINITE ELECTRONICS, INC. IS PROHIBITED. THESE COMMODITIES, TECHNOLOGY OR SOFTWARE WERE EXPORTED FROM THE UNITED STATES IN ACCORDANCE WITH THE EXPORT ADMINISTRATION REGULATIONS. DIVERSION CONTRARY TO U.S. LAW PROHIBITED.